

Illinois State Geological Survey

.2a

(1132.80) See map no. 4107 d5.1-195 Sheet 49

August 22, 1931

Mine drift entry of Reinheimer slope mine, north of road and east of small ravine. Mr. Thalhaber in charge

Limestone, medium to dark gray, fairly massive, fossiliferous 9" (Jamestown bottom limestone)

Shale, dark gray, soft, calcareous, rather thin bedded, with loose fossils like clod;

Productus semireticulatus, etc. 2'4"

Limestone, medium to dark gray, slabby to massive, dense, somewhat argillaceous (Brereton limestone) 2'11"

Shale, dark gray, soft, like clod 4"

Shale, black, fissile, fairly hard 6-7" reported variable by miners.

Section of No. 6 coal

Coal 9"

Fusain 1/8"

Coal 2-1/4"

Fusain 1/8-1/4"

Coal 3-1/2"

Fusain 1/4"

Coal 5-1/2"

Fusain 1/4"

Coal 5-1/2"

Clay, light gray 3/8"-3/4" top of drift coal

Coal 6-1/2"

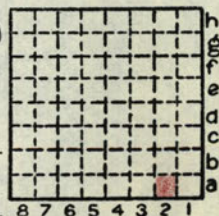
Fusain 1/8"

Coal 4-3/4"

Fusain 1/8"

Coal 3-1/2" (base of drift coal)

(cont. next page)



By H. R. Wanless Date 1931

Quadrangle New Athens

County St. Clair Sec. 32 T. 1S R. 7W

Illinois State Geological Survey

p. 2.2a
(1132.80) cont.

Clay, light gray 1/8-1/4"
 Coal 1'1/2"
 Pyrite 1/4"
 Coal 4"
 Blue band 1/2-1", averaging 1"
 Coal 1'1/2" seen, 6" to base of coal not seen
 Underclay, with lime concretions and pyrite
 1' seen

Creek bank just north of Reinheimer mine.

Limestone, yellow gray, with calcitic veins and
 large *Productus semireticulatus* and *Composita*
 5-6" (Jamestown)

Shale, dark gray, calcareous, thin bedded
 like chod 6"

Coal 3-1/2" (Jamestown)

Clay or shale, brownish gray 1/4"

Limestone, dark gray, massive, slabby, same
 as top bed in mine entry 0-2", with
Patellostium sp., thickening to west to
 6-8"

SPEC. 149

Shale, dark gray, soft to medium hard, not
 very well bedded 1' seen

By H. R. Wanless Date 1931

Quadrangle New Athens

County St. Clair Sec. 32 T 1S R 7W

