

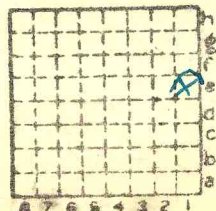
Do not confuse
 T #43 slope
 in 5-95-5E
 which opened
 in 1947.
 (S-43)
 J.D. 1956

Peabody 43

S 4

578

mi. #44



Sec.	17
T.	9 17
R.	6 17
Index No.	



Mine originally operated by: (1)

Date Saline County Coal Corp.
1910

Original name or number: #3
Illinois Coal Report 1910 p.

LATER OPERATORS

Date	Operator	Name or No.
2 1919	Big Creek Coal Co.	#3
3 1920	Big Creek Coals Inc.	#3
4 1923	Saline County Coal Corp.	#3
5 1929	Peabody Coal Co.	#43
6		
7		
8		
9		
10		
11		
12		
13		
14		

Index #44

abd 1942

* Also owners #See ownership sheet

Railroad, Wagon, Idle, Abandoned 1942 Shaft

C.C.C.&St. L. ^{34, 35}

IDENTIFICATION

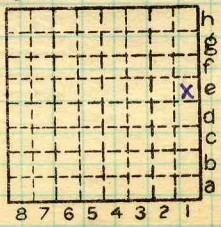
County No. **578**

Coal No. **5**

Quad **Harrisburg**

Part

County **Saline**



Sec. 17

T. 9 S.

R. 6 E.

Index No.

0817 e1

COAL MINE OPERATOR



(Sheets)

COAL PRODUCTION

(Sheet)

NO.	Period						Tons	
	Mo.	Day	Year	Mo.	Day	Year		
4	1	1	1936	12	31	1936	81	620
4	1	1	1937	12	31	1937	148	432
S-4	1	1	1938	12	31	1938	236	704
						1939	325	443
						1940	451	259
S-4	1	1	1941	12	31	1941	490	755
S-4	1	1	1942	12	28	1942	91	851
						1943		

11,419,051
 9,680,767
 1,738,288

Abd Mar. 1942

17bd 1/2

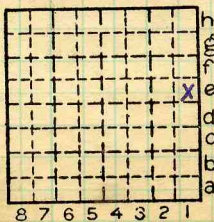
SUMMARIES

No.	to	No.		
1910		1935	11	337 437
			11	419 057

Railroad, Wagon, Idle, Abandoned 1942

IDENTIFICATION

S-4
 County No. 578 Coal No. 5
 Harrisburg
 Quad. Part
 County Saline



Sec. 17
 T. 9 S.
 R. 6 W.
 Index No. 0817 el

COAL MINE—PRODUCTION



LOCATION AND ELEVATION

Location: side R. R. side R. R. side Highway No.

on top. map Location sheet

Elevation: Method, 1. Est. () ft. 2. Inst. (kind Hand Level) 373 ft.

By KDW Data sheet

DEPTH

Authority To coal 261 ft. Authority Rail to rail ft. Top of coal above rail. (Est. Rule) ft. To coal 267 ft.

ALTITUDE OF TOP OF COAL.

By estimated data By instrumental data 112 ft.

Thickness

Max. in. Min. in. Aver. 87 in. 67

GEOLOGICAL DATA

Mine notes, date 1912

Coop No. Pyr. inv. Coal Ash inv.

CHEMICAL DATA

Analyses Face U. I. 3 B. M. Others Car U. I. B. M. Others Org. Sulf U. I. B. M. Others Ash fusion U. I. B. M. Others Ash anal. U. I. B. M. Others #44 U. I. B. M. Others

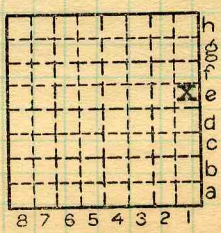
Classification R.I. 137 U.C.I. 148

Misc. tests: Coking. Cleaning Boiler

Published descriptions:— 500' N } SE COR SE NE 300' W }

Railroad, Wagon, Idle, Abandoned 1942 2140' from N 300' from E IDENTIFICATION

County No. 578 Coal No. 5 Part Quad. Harrisburg County Saline



Sec. 17 T. 9 S. R. 6 E. Index No. 0817 el

COAL MINE LOCATION AND DATA

COAL MINING INVESTIGATIONS
COOPERATIVE AGREEMENT

Mine Name or No., #3

1 mile West from Harrisburg.

Operator, 1912 Saline County Coal Co.

Operator, 191

Entrance, Shaft Elev.,

Depth to bottom coal, 274'

ft. { above,
below,
ft. Alt.

SURFACE DATA.

R. 6 E



R. R.

A. Topography Flat

See

B. Surficial materials, (1) Character Yellow sandy clay, with a few small boulders and pebbles.

(2) Thickness, 40'

(3) Effect on mining and shaft-sinking, of former drainage lines, underground water strata, etc.

C. Outcrops, (1) Character,

See

(2) Structure,

See

(3) Fossil horizons

See

Collection No.,

See

(4) Evidences of subsidence,

See

D Note collection of mine maps, drill records and shaft logs.

See drill record sheet.

E. Notes on surrounding area,

See

Coal bed name: Local, 5

Survey 5

Collector, Kowhite

State No. 0817

Mine, #3

Co. Saline Co-op. No. 44

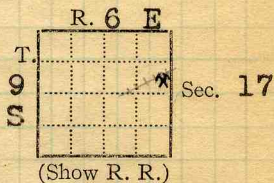
L.—SURFACE SHEET (Geol.)

Town, **Harrisburg**
Local Authority,
Level: Auth.,
Depth KDW;
Method,

Surface alt., **370** ft.
Depth to coal, **267** ft.
Alt. top coal, **103** ft.
Thickness: Av. **87** in.
Max. **90** in., Min. **84** in.

R. R., ~~Big 4~~ **CCC + S.L.**

Location: authority, **KDW**



Fault

Operator

Mine Name or No.

19 11 Saline County Coal Co

No. 3

Successor to

Date

Succeeded by **Big Creek Coals, Inc.**

Date

Succeeded by **Saline Co. Coal Corp**

Date **1925**

(Coal Catalog)

307N Michigan Ave, Chicago. PRODUCTION.

Peabody Coal Co

Fiscal

#43

U. S. No.

19 15

560 827

1925 4000 tons daily

1926 4000 Tons daily cap.

1927 414 108

1928

1930 #13

13

Geol. Notes? **Yes** Coop. No. **44**

Coal secs.? **8**

Analyses No. **4993, 4994, 4991**

COUNTY

Examined by **KDW**

Ref.

Coal bed name: Local **#.5**
County **Saline**

Survey No. **5**

Index No. **0817.95**

K.—ACTIVE SHIPPING OR LOCAL COAL MINE.

UNDERGROUND DATA (cont'd.)

K. (5) Physical character of coal in benches,

(a) Relative hardness,

(b) Lustre, *Bright*

(c) Fracture, *Hackly.*

(d) Texture, *Laminated*

See

(6) Impurities in coal, other than bedded,

(a) Kind, *A Few Sulphur balls, streaks, etc.*

(b) Position and persistence,

Irregular

(c) Rejected,

Yes

Ease of separation,

Hand Picked.

See sheet 1+3

L. Floor: (1) Material *Sandy fire clay . Ls. below*

(2) Thickness *Clay 2', Ls 6"*

(3) Variation

(4) Note character, condition, tendency to heave, relation to undercutting, commercial value.

*Hard sandy shale, filled with plant impressions.
Does not heave.*

See

(5) Clay sample No.

Location,

M. Stratigraphy

(1) Fossiliferous horizons underground,

Collection No.

Location,

N. Notes on effect of deep drilling in coal mine areas.

See

Collector, *KD White*

Coal *5*



State No. *0817*

Mine, # *3*

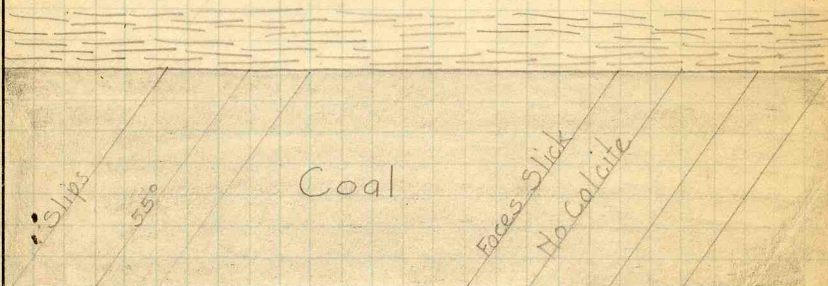
Co. *Saline*

Co-op. No. *44*

INDEX

H+I

Roof, a gray shale, with very little sand; of a dark color, and only ^{contains} sulphur balls in parts of the mine; other section being free. Falls in small irregular tenticular peices

K₃

Slips Bear North & South. Sketch showing parallel slips in coal

Coal bed lies in hills and swags, hill, are like knolls, dip from crest in all direction.

Slips occur in roof, generally parallel fault; general bearing N35°E.

Collector K White

Mine #327

Coal 5

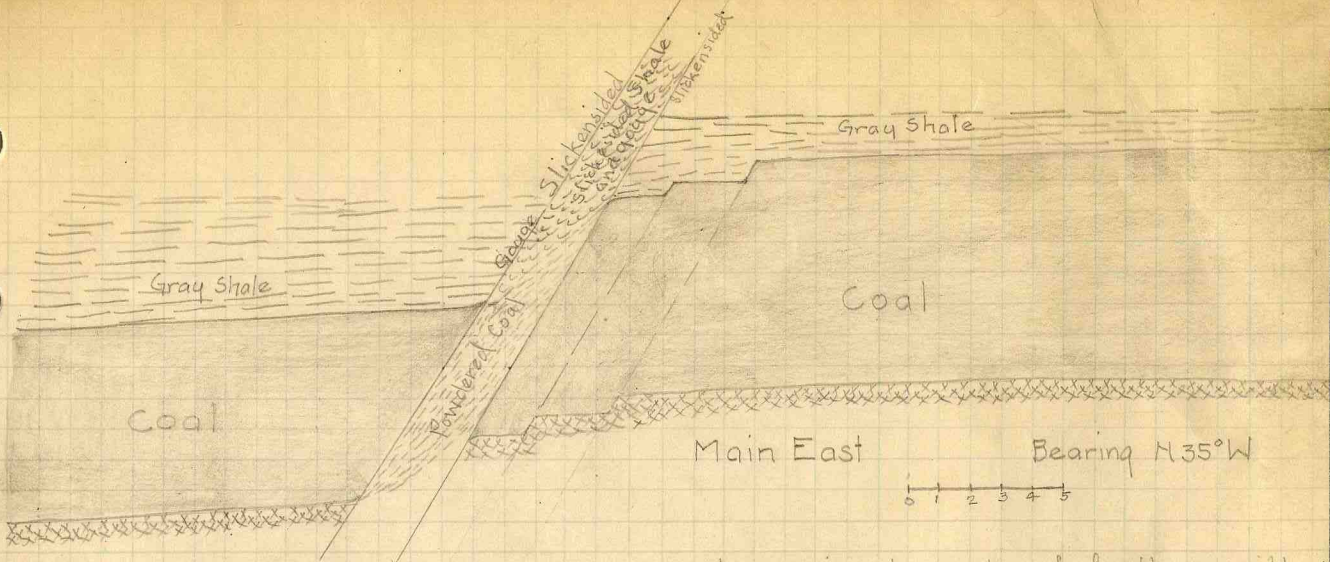
Co. Saline

State No. 0817

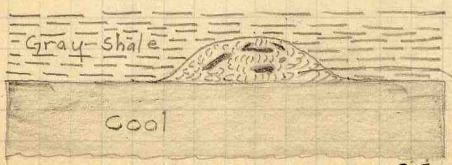
Co-op No. 44

X.—EXTRA SHEET No. 3

MOORE'S
ROBSON
METERS



General approximate angle of fault 60° with horizontal, Face of shale is covered with about 6" of gouge. Coal badly powdered contact Roof near fault badly broken and slickensided



→ Pot filled with shale and Coal streaks.

INDEX

✓

State No. 0817
Co-op No. 44

Coal 5
Co. Saline

Collector K. D. White
Mine 3
X.—EXTRA SHEET No. 2



COAL MINING INVESTIGATION

COOPERATIVE AGREEMENT

Operator, Saline Co. Coal Co. Date, 6-20, 1912
Mine, #3 Located 1 miles* W from Harrisburg
Location in mine, 1st South of Main West (1500' from shaft)
Total (vertical) depth from surface at point of sampling, 260 ft.

In describing the beds and character of the members, note any member that is rejected by the miner. Note all clay and sulphur partings, whatever their thickness. Exclude from sample all clay and sulphur partings 3/8 inch thick or over (and even those of less thickness if they are rejected at mine or tipple).

SECTION OF BED AT POINT SAMPLED.

Table with 4 columns: No., DESCRIPTION, FEET, INCHES. Rows 1-17 describing coal and shale layers with measurements in feet and inches.

Is coal wet or dry? Dry
Time exposed, 6 hours, 1 1/5 minutes.
Weight, 60 gross, net.

What are the impurities, and how do they occur? shale and Sulphur streaks.

What are shipped? 1-2-3-5-7-8-9-11-12

What are excluded from the sample? 4-6-10

#4991 Coal bed, #5
*Direction (N., NE., etc.) †Nearest railway station.

Town, Harrisburg Mine, #3 Saline Co. Saline Co. Coal Co.
SAMPLE NO., 4 CAN NO., 4 No. 44 0817

I.—COAL SAMPLE SHEET. Sampler. McDonald

Handwritten calculations: 7 3/5 - 1 1/4 = 7 1/10
12 634 Stafford

347



COAL MINING INVESTIGATION

COOPERATIVE AGREEMENT

Operator, *Saline Co. Coal Co.* Date, *6-20*, 191*2*
 Mine, #*3* Located *1* miles *W* from *Harrisburg*
 Location in mine, *Main East (100 ft. from Shaft) Entry*
 Total (vertical) depth from surface at point of sampling, *260* ft.

In describing the beds and character of the members, note any member that is rejected by the miner. Note all clay and sulphur partings, whatever their thickness. Exclude from sample all clay and sulphur partings $\frac{3}{8}$ inch thick or over (and even those of less thickness if they are rejected at mine or tipple).

SECTION OF BED AT POINT SAMPLED.

No.	DESCRIPTION.	FEET.	INCHES.
1	Bright Coal		2
2	Sulphur Streak		$\frac{1}{2}$
3	Bright Coal	1	3
4	Sulphur Streak		1
5	Mother Coal		$\frac{1}{2}$
6	Bright Coal		11 $\frac{3}{8}$
7	Mother "		$\frac{3}{8}$
8	Bright "	3	11 $\frac{1}{2}$
9			
10			
11			
12			
13			
14			
15			
16			
17			
TOTAL,		6	5 $\frac{7}{8}$

Roof - Gray shale
Daily output 1100 T.

Is coal wet or dry? *Dry*

Time exposed, *—* hours, *50* minutes.

Weight, *60* gross, *—* net.

What are the impurities, and how do they occur? *Sulphur streaks*

What are shipped? *1-3-5-6-7-8*

What are excluded from the sample? *2-4*

Coal bed, #*3*
 †Nearest railway station, *—*

Town, *Harrisburg* Mine, #*3*
 Co. *Saline Co. Coal Co.*
 SAMPLE NO. *44 A* #*21*
 No. #*44* *0817*

I.—COAL SAMPLE SHEET. Sampler.

77 $\frac{7}{8}$ - 1276 $\frac{3}{8}$
12482

McDonald
Stafford



COAL MINING INVESTIGATION

COOPERATIVE AGREEMENT

Operator, *Saline Co. Coal Co.* Date, *June 20*, 191*2*
 Mine, *#3* Located *1* miles* *W* from *Harrisburg*
 Location in mine, *Crosscut opp. 7th So. of back main W.*
 Total (vertical) depth from surface at point of sampling, *245* ft.

In describing the beds and character of the members, note any member that is rejected by the miner. Note all clay and sulphur partings, whatever their thickness. Exclude from sample all clay and sulphur partings $\frac{3}{8}$ inch thick or over (and even those of less thickness if they are rejected at mine or tipple).

SECTION OF BED AT POINT SAMPLED. (*1500' from Shaft*)

No.	DESCRIPTION.	FEET.	INCHES.
1	Bright Coal		10
2	Sulphur streak		1/2
3	Bright Coal		5 1/2
4	Mother Coal		1 1/2
5	Shale		5/8
6	Mother Coal		1
7	Bright "	2	5 1/2
8	Mother "		3/8
9	Bright "	1	4 1/2
10	Mother "		1/4
11	Bright "		11
12			
13			
14			
15			
16			
17	Gray Shale Roof		
TOTAL,		6	6 3/4

Is coal wet or dry? *Damp*
 Time exposed, *1* hours, *7* minutes.
 Weight, *60* gross, net.

What are the impurities, and how do they occur? *Sulphur streaks*

What are shipped? *1-3-4-6-7-8-9-10-11*

What are excluded from the sample? *2-5*

Town, *Harrisburg* Mine, *#3* Coal bed, *#5*
 *Direction (N., NE., etc.) †Nearest railway station.

SAMPLE NO. *43* CAN NO. *31* Co. *Saline Co. Coal Co.*
 No. *44* **0817**

I.—COAL SAMPLE SHEET. Sampler.

$$48 \frac{3}{4} - 2 \frac{1}{8} = 46 \frac{5}{8}$$

McDonald
Sealed

Operator,
Mine,
Located,
Location in mine,

miles from

Room 1 2nd St East

Date
Sec. T. R.

GRAPHIC SECTION		DESCRIPTION OF SECTION (AT POINT SAMPLED)		
In.	No.	No.	(Note character and thickness of roof)	Inches
11	1	1.	Top Coal harder than bottom	
7 1/2	2		Glance + dull coal well mixed,	
	3		Very few bands of gl. coal a little sulphur, fracture hackly	11
55	4	2	Knife edge parting	
		3.	Soft coal - a mixture of coal partings + bone; breaks up badly on shodding 0-7 1/2	7 1/2
		4	Mother of coal parting	
		5.	Bed	55
(Note character and thickness of floor)				
Total thickness of coal.				
Condition,		Time,	hr.	min.
Wt. Gross, lbs.		Net,	lbs.	
What Nos. shipped by Co.?				
Excluded from sample: No.				
Sample represents		in.	tons.	
Impurities? How do they occur?				

Coop No 44

Sample No. None Can No. Lab. No.

Collector, K.D. White Coal: Survey No. 5

Mine, Co. Saline Index No. 0817

30

Operator, _____ Date _____
 Mine, _____ Sec. _____ T. _____ R. _____
 Located, _____ miles from _____
 Location in mine, Face Main West Air Course

GRAPHIC SECTION		DESCRIPTION OF SECTION (AT POINT SAMPLED)		
In.	No.	No.	(Note character and thickness of roof)	Inches
6	1			
16	2	1.	Hard bench (top coal)	6"
		2.	Laminated coal contains considerable bone + some clay bands + lenses	16"
58	3	3	Bottom bench	58"
		(Note character and thickness of floor)		
		Total thickness of coal. 80		
		Condition,	Time,	hr. min.
		Wt. Gross, lbs.	Net, lbs.	
		What Nos. shipped by Co.?		
		Excluded from sample: No.		
		Sample represents	in.	tons.
		Impurities? How do they occur?		

Sample No. None Can No. _____ Lab. No. _____
 Collector, KD White Coal: Survey No. 5
 Mine, #3 Co. Saline Index No. 0817

INDEX

1

K5

1 Section Face Main East
Coal very bright; hard, glance and dull coal well interlaced, contains sulphur bands, and mother coal layers. Coal harder towards bottom 6'-6"

2 Section 3rd IP Entry East
Coal generally similar to (sec. 1) contains also sulphur balls and plates of pyrite
Cleat N27°W strongest developed
" N55°E

3 Section Room 1-2nd S. East

- 1 Top coal harder than bottom. Glance and dull coal well mixed. Very few bands of glance coal, a little sulphur, fracture hackly. 0'-11"
- 2 Knife edge parting
- 3 Soft coal a mixture of coal and partings of bone; breaks up badly on shooting. 0'-7½"
- 4 Mother of Coal parting
- 5 Bed same as (sec. 1) 4'-7"

4 Section Face Main West Air Course

1. Hard bench (top coal) 8"
- 2 Laminated Coal contains considerable bone and some clay bands and lenses 18"

Top bench 6"
Laminated Coal 16"
Bottom Bench 4'-10"

5 Section Face 1st E. North

Coal in solid bench, very uniform from top to bottom. Coal generally similar to previous Secs and 2. Section little or no dirt sulphur, or bone coal 7'-11"

Coal contains very little calcite. Shoots in rather small pieces.

Below top bench, a bed of laminated coal occurs; laminations are due to small plates of bone coal

Collector K.R. White

Mine # 3

Coal 5

Co. Saline

State No. 0817

Co-op No. 44

Entrance *shaft*
 Kind of tippel *steel*
 Motive power for hoist *steam*
 Source if electrical
 Kind of hoist (cage, skip, etc.) *cage*
 Kind of haulage *motor*
 Mining equipment
 Note any features of the equipment that are of special interest

SURFACE DATA.

A. Topography, *nearly flat*
 B. Surficial materials, (1) Character,
 (2) Thickness, (3) Effect on mining and shaft-sinking, of
 former drainage lines, underground water strata, etc.

C. Outcrops, *none* (1) Character,
 (2) Structure,
 (3) Fossil horizons,
 Collection No.,
 (4) Evidences of subsidence,
 D. Note collection of mine maps, drill records and shaft logs.

See drill record sheet,

E. Notes on surrounding area,

Coal bed name: Local, *Harrisburg* Survey No.
 Collector, *H.C.C.*
 Mine, *No 3* Co. *Saline* Index No. *0817.95*

K. (5) Physical character of Coal,

(a) Relative hardness,

no notes consistent differences, altho much variation in physical properties

(b) Lustre,

(c) Fracture,

(d) Texture,

See

(6) Impurities in coal, other than bedded, kind, position, persistence, ease of separation, etc.

Pyrite lenses and balls are scattered thru the bed; possibly more in West part of mine, as noted, probably not.

See

L. Floor: (1) Material,

(2) Thickness,

(3) Variation,

hard lt gray clay, smooth top.

(4) Note character, condition, tendency to heave, relation to undercutting, commercial value.

See

(5) Clay sample No.

Location,

M. Stratigraphy,

(1) Fossiliferous horizons underground,

a few plant fossils on East not good collecting.

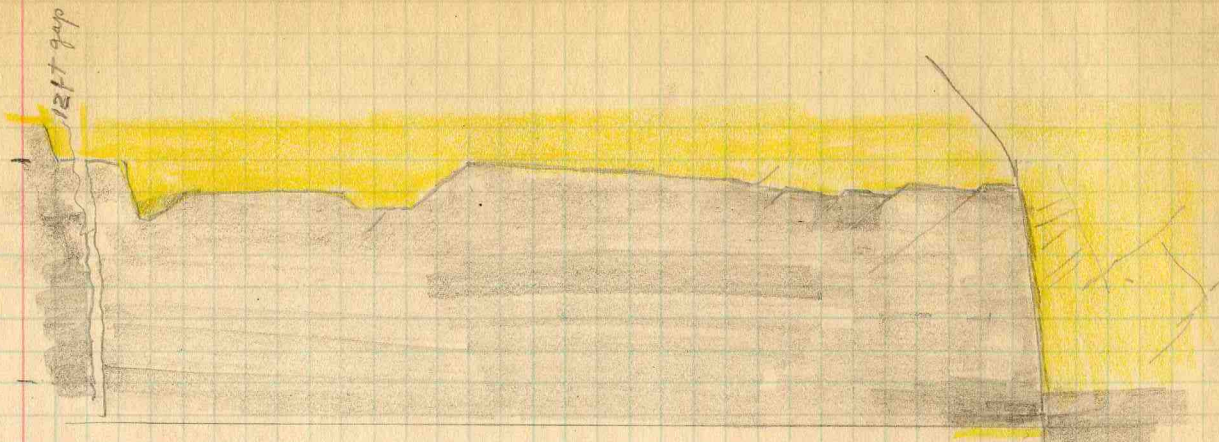
Collection No.

Location,

N. Notes on effect of deep drilling in coal mine areas.

See

Collector, *HSC*Cola: Survey No. Mine, *No 3*Co. *Saline*Index No. *0817.95*



Sketch of fault zone on 11th West.
 Scale 1 foot = 1000 Hor and Vert.

XI - HEC
 Mine No 3

Saline 0817.90

12ft gap

INDEX

K2

A bony bench, near shale where thick, comes in where indicated on mine map, in 2nd this is a thin band - but 3" to 18" thick - and lies at the top of the bed. It may well be the swamps side of the "sandstone cut out" area of Cady.

Cady's line is indicated on the mine maps in yellow and - so far as this mine is concerned - is extended much farther to the N.E., no parting or cut out being found in the rest of the mine workings.

I do not have with me the four logs noted by Cady in this section (8) nor are all of them listed in the record list given me by G.W.H. It is not clear where for what basin Cady mapped his stippled area in this section.

Collector

HCC

Mine

M3

Co.

Saline

Coal: Survey No.

Index No. 0817-95

X.—EXTRA SHEET No. 2

Symbol Description Inches

1 division=3 in.)



section at Ingraham Mine -
1 div = 1 foot.

shale med gray

5' thick }
No 4 }
No 3 }
No 2 }
No 1 }

Samples -
foss. only seen in No 1

16 shale flaky dark - to fossils, bits,
coal

Saline 0521 ?

Peabody #43

Duke m 43

#1

Center 8 - 875 E

Cent SE 1/4 120' E

SE 1/8 8 360' W

SW cor NWNW 16 400 E

Cent. 16 1250 W

S 1/4 cor 16 500 N.

#2

Center E 1/2

runs to grant

Janet - SE cor 8 1400' N 425' wide

S 1/4

S 1/4 cor 9 1610 N 400' wide

S-85 600 133

S 1/4 cor 8 1220 N 400' wide

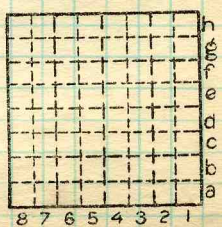
SE cor 9 1920' N 320' wide

GN.

By GHC Date 7/5/38

Quad. Hanniburg Part

County Saline

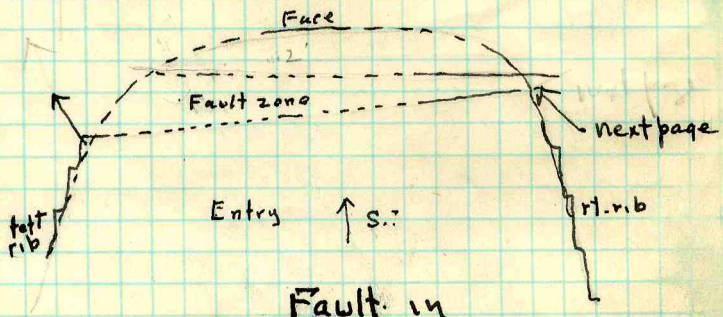
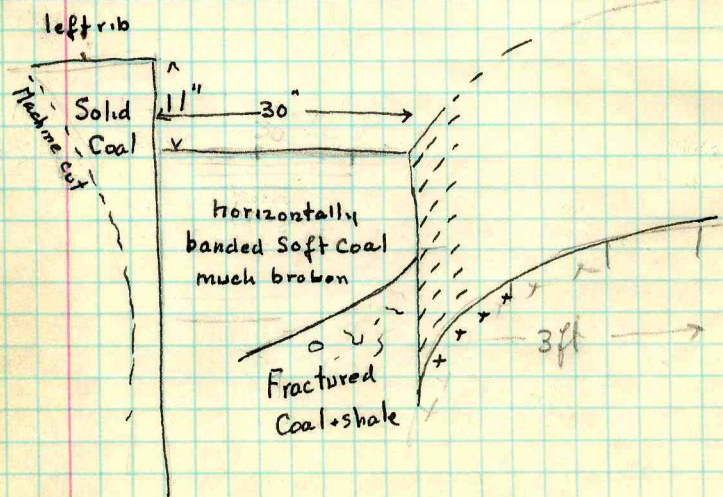


Sec. N. S. E. W. T. R. Index No.

0817



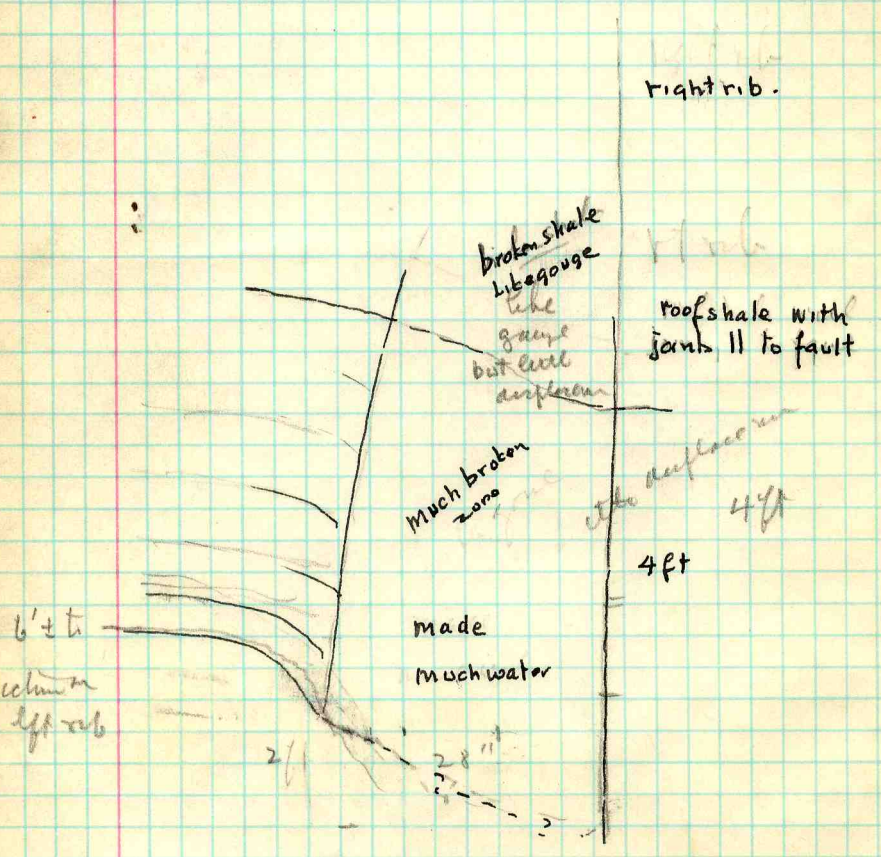
come
↓



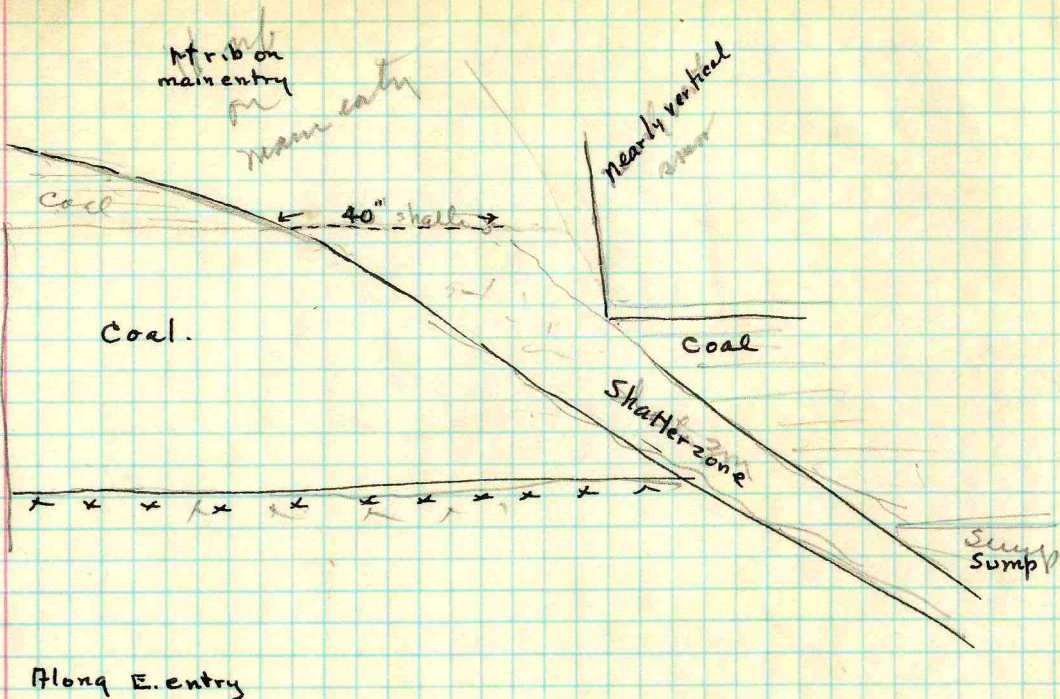
Fault in

Sec. S- T9S., R5E
Salme C

Peabody 43
Feb. 2, 1949



Fault in
 Peabody #3
 Feb 2, 1949



Fault in Peabody
43
Feb 2, 1944

about 1/2 mi SE of Bankston Crk Collier no 16.

Peabody DR hole #36
 SE NE 24 95 SE
 Surface EI 405.64

202' 2" to base of No 5

- 4' 10" soil etc
- 3' 0" Rotten SS
- 11' fire clay + green shale
- 3' 9" bastard limestone (actually Caprock!)
- 11' 8" sandstone
- 23' 4" sand slate stks, sandstone
- 4' 3" bastard limestone
- 1' 6" black slate
- 5' 4" No 6 coal, little sulphur and slate
- 4' 8" fire clay very soft
- 21' 8" sandstone
- 16' 10" sand slate and sandstone mixed
- 1' 9" Coal (5A)
- 11' 7" sand slate and SS mixed
- 52' 5" sand slate
- 19' 4" sand slate
- 5' 3" No 5 coal little slag near top

Saline

Peabody Core