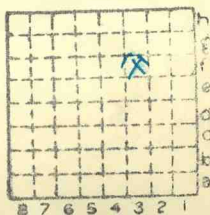


Johnston City & St. Louis CC

4811

MI 149



Sec. 19

T. 8 ~~4~~ S.

R. 3 ~~4~~ E.

Index No.



Mine originally operated by: (1) **Johnston City & St Louis Coal Co.**
 Date **1908**

Original name or number:
 Illinois Coal Report **1908 D. 371**

LATER OPERATORS

Date	Operator	Name or No.
1909	Standard Collieries Co (Coal Report 1909 p.408	No.2
1912	E.C.Searls, Receiver	McClintock
1916	Searls Coal Co	"
1923	Cregar Clinch Coal Co	"

Note: from Dmm Coal Reports 1924.

" Jan 25, 1924 - An explosion of gas caused by open lights in the Cregar-Clinch McClintock mine, killed 33 men

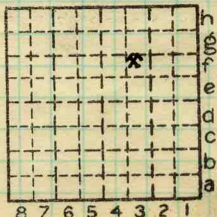
(Explosion map available on microfilm)
 Reel ~~3062~~ frame 119.

* Also owners #See ownership sheet

Railroad, Wagon, Idle, Abandoned **1931**

SHIPPING MINE IDENTIFICATION

County No. **411** Coal No. 6
 Quad. **West Frankfort** Part **5**
 County **Williamson**



Sec. **19**

T. **8** S.

R. **3** E. W.

Index No.

0219 f3

COAL MINE OPERATOR



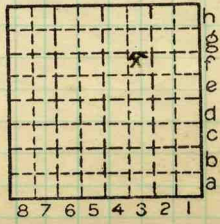
Period						Tons		
Mo.	Day	Year	Mo.	Day	Year			
1	1	1931	12	31	1931	(idle) (abandoned ?)		

SUMMARIES					
No.	to	No.			
1908		1930 incl.		4 923	965

Railroad, Wagon, Idle, Abandoned
IDENTIFICATION

County No. 411 Coal No. 6

Quad **W. Frankf.** Part 5
County **Williamson**



Sec. 19

T. 8 N.
S.
R. 3 E.
W.

Index No. 0219-f3



LOCATION AND ELEVATION

Location: N side Mo. Pac R. R. side R. R. side Highway No.

on top. map Ph-144. Location sheet

Elevation: Method, 1. Est. () ft. 2. Inst. (kind) 427.89 ft.

By Company Data sheet

DEPTH

Authority Harry Goodnow Chief E. To coal 270 ft. Authority Rail to rail 270 ft. Top of coal above rail. (Est. Rule) 9 ft. To coal 261 ft.

ALTITUDE OF TOP OF COAL

By estimated data By instrumental data 166.89 ft.

Thickness 108 in. Min. 90 in. Aver. 198 in.

GEOLOGICAL DATA

Mine notes, date 1921 (Wilson-Netzband) 1908 (Cady NB 88) Coop No. 149 Pyr. inv. Coal Ash inv.

CHEMICAL DATA

Analyses Face U. I. B. M. 80610-13 Others Car U. I. B. M. Others Org. Sulf U. I. B. M. Others Ash fusion U. I. B. M. Others Ash anal. U. I. B. M. Others U. I. B. M. Others

Classification R. I. 136 U. C. I. 147

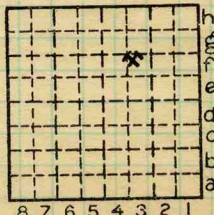
Misc. tests: Coking. Cleaning Boiler

Published descriptions:—

Railroad, Wagon, Idle, Abandoned

IDENTIFICATION

County No. 411 Coal No. 6 Quad. W. Frankfort Part 5 County Williamson



Sec. 19 T. 8 S. R. 3 E. Index No. 0219 f3

COAL MINE LOCATION AND DATA



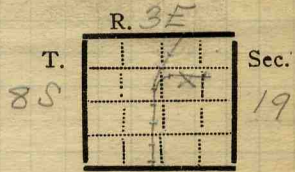
Town, *Johnson City*
Local Authority,

Surface alt., *420* ft.
Depth to coal, *270* ft.
Alt. top coal, *150* ft.
Thickness: Av. *98* in.
Max. *108* in., Min. *90* in.

Level: Auth., *Harry Godnow, Chief Eng.*

Method, *Topog. map.*

R. R., *Mo. Pac.*



Location: authority, *Mine Map*

(Show R. R.)
Operator Mine Name or No.

19 21 Searles Coal Co. McClintock Mine.

Successor to
Date
Succeeded by
Date
Succeeded by
Date

PRODUCTION.

							U. S. No.
<i>19 21</i>						<i>2000 - 2200 Tons per day.</i>	

Geol. Notes? *Yes* Coop. No.

Coal secs? *3*

Examined by *Wilson*

Ref.

Coal bed name: Local

Survey No. *6 F3 ✓*

County *Williamson*

Index No. *0219.66*

K.-ACTIVE SHIPPING OR LOCAL COAL MINE.

date since 1927 (9019-IM-7-18)



COAL MINE NOTES.

0219

COUNTY *Williamson* TOWN *Johnston City.* MAP No. *0319*
 T. *85.* R. *3E* S. *19 SW NE*
 OPERATOR *Johnston City & Big Muddy Coal Mining Co.*
 OFFICE *Old Colony Bldg. Chicago.*

- MINE
- TIPPLE
- ENGINES
- BOILERS
- DRUM
- SHAFT CAGE
- HAULAGE
- CARS
- VENTILATION
- DRAINAGE
- SPRINKLING
- WORKING SYSTEM
- MINING METHODS

SIZE OF ENTRIES—MAIN	CROSS	ROOM	NECK
SIZE OF PILLARS—MAIN	CROSS	ROOM	
SHAFT	CHAIN	BARRIER	
AMOUNT OF TIMBERING		SIZE	
PROPORTION OF COAL UTILIZED			
AMOUNT AND CHARACTER OF WASTE			
ACREAGE OF COAL MINED			
ACREAGE OF COAL REMAINING			
PROPORTION OF MINE RUN AND SCREENED COAL			
METHOD OF SIZING			RESCREENED
SIZES			
PER CENT			
PROPORTION AND SIZE OF WASHED COAL			
DAILY OUTPUT			
UTILIZATION			
MARKETS			
FREIGHT RATES			
SELLING PRICES AT MINE			
COAL LAND OWNED	LEASED	HELD IN FEE	
COST OF LAND OWNED	LEASED	HELD IN FEE	
ADDITIONAL NOTES			

0319
 02193



COAL MINE NOTES.
CONTINUED

0219

OPERATOR *Johnston City & Big Muddy Coal Mining Co.*
 ENTRANCE *Shaft.* NAME OF COAL BED *#9*
 ELEVATION *427.89* THICKNESS OF COAL *108"*
 DEPTH TO FLOOR *270* MAX. MIN. AV.
 ALTITUDE OF COAL *157.89*

LOCATION OF SECTION

No.	SECTION.	In.
1		
2		
3		
4		
5		
6		
7		
8		
9		
10		
11		
12		
Tape		Total

SECTION

Feet

SAMPLE No.
CAN No.
CONDITION
GROSS WEIGHT
TIME EXPOSED
NOT SHIPPED
NOT INCLUDED

PHYSICAL PROPERTIES BY NUMBERS

ROOF *Gray Shale.*

FLOOR *Fire Clay.*

DIP

FAULTS, ETC.

GAS

COLLECTOR *Cody.*
additional notes.

REFERENCE *U.B. 88, P 25* DATE
" " " *72*

**0349*
0219
f3

K. (5) Physical character of coal in benches,

- (a) Relative hardness, *Harder below B.B. than above.*
- (b) Lustre, *bright in bottom, dull in middle, glance at top.*
- (c) Fracture, *cleat See X 1*
- (d) Texture, *Laminated* See
- (6) Impurities in coal, other than bedded,
 - (a) Kind, *Many pyrite lenses & stringers*
 - (b) Position and persistence,
 - (c) Rejected, Ease of separation, See

- L. Floor: (1) Material, *Light Gray Floor clay containing*
- (2) Thickness, *2-3' exposed in grades.* *slips*
- (3) Variation,

(4) Note character, condition, tendency to heave, relation to undercutting commercial value.

The whole eastern part of this mine is abandoned and here, it is rept'd, the floor clay heaves very little..

(5) Clay sample No. Location, See

M. Stratigraphy,

- (1) Fossiliferous horizons underground,

Collection No. Location,

N. Notes on effect of deep drilling in coal mine areas.

See

K5c

Cleat: At face of 10th N of the Main E
Face N 32° W, Butt N 52° E
At face of 15 & 16 Stubb of 8th S off Main E
Cleat is not so well shown. Face N 30° W.
Butt N 55° E.

K3

Faults: Near the face of the 15 & 16
Stubs off 8th S off Main E are a series
of small slips in the coal itself.
These trend E-W and dip to the N.
They tend to make bad top although the
top coal thruout this mine is not nearly
so tenaceous and tough as it should be
to make a good roof. In many places
the top coal has fallen, leaving exposed
a gray shale which must be timbered.

Operator, *Searls Coal Co* Date, *July 23, 1921*
 Mine, *McClintock* Sec. *19* T. *85* R. *3E*
 Located, *7 1/2* miles from *Johnston City*
 Location in mine, *40' from face of Back E.*

GRAPHIC SECTION		DESCRIPTION OF SECTION (AT POINT SAMPLED)	
In.	No.	No.	(Note character and thickness of roof) Inches
			<i>Shale roof</i>
		<i>1</i>	<i>Coal (left as roof) App 18"</i>
		<i>2</i>	<i>Coal</i> <i>10</i>
		<i>3</i>	<i>Charcoal</i> <i>1/8</i>
		<i>4</i>	<i>Coal</i> <i>8 1/2</i>
		<i>5</i>	<i>Charcoal</i> <i>1/8</i>
		<i>6</i>	<i>Coal</i> <i>3 1/2</i>
		<i>7</i>	<i>Charcoal</i> <i>1/4</i>
		<i>8</i>	<i>Coal</i> <i>6 1/4</i>
		<i>9</i>	<i>Charcoal</i> <i>1/8</i>
		<i>10</i>	<i>Coal (Pyrite stringers)</i> <i>8 1/2</i>
		<i>11</i>	<i>Pyrite</i> <i>1/8</i>
		<i>12</i>	<i>Coal</i> <i>20 3/4</i>
		<i>13</i>	<i>B.B. Gray Shale</i> <i>1</i>
		<i>14</i>	<i>Coal</i> <i>3 1/4</i>
		<i>15</i>	<i>Pyrite</i> <i>14 3/4</i>
		<i>16</i>	<i>Coal</i> <i>7 7</i>
			<i>Floor Clay</i>
			<i>Tab 76</i>
			(Note character and thickness of floor)
			Total thickness of coal. <i>95</i>
Condition, <i>Dry</i>		Time, ^{<i>12:13</i>} <i>9:20</i>	hr. <i>55</i> min.
Wt. Gross, <i>30</i> lbs.		Net, <i>4</i>	lbs.
What Nos. shipped by Co.?			
Excluded from sample: No. <i>1, 13</i>			
Sample represents <i>76</i>		in.	tons.
Impurities? How do they occur?			

Sample No. *N-21-95* Can No. *7762* Lab. No. *80611*
 Collector, *Netzeband* Coal: Survey No. *6*
 Mine, *McClintock* Co. *Williamson* Index No. *0219.66 f3*
 R.—COAL SAMPLE SHEET.

Operator, *Searles Coal Co.* Date *July 23, 1921*
 Mine, *McClintock* Sec. *19* T. *8S* R. *3E*
 Located, *at* miles from *Johnson City*
 Location in mine, *15' from face of 10th N. off Main E*

GRAPHIC SECTION DESCRIPTION OF SECTION (AT POINT SAMPLED)

In.	No.	No. (Note character and thickness of roof)	Inches
		<i>Shale Roof</i>	
	<i>1</i>	<i>Coal (Left as roof) 11"</i>	
	<i>2</i>	<i>Coal</i>	<i>6 1/2</i>
	<i>3</i>	<i>Charcoal</i>	<i>1/8</i>
	<i>4</i>	<i>Coal</i>	<i>18</i>
	<i>5</i>	<i>Charcoal</i>	<i>1/8</i>
	<i>6</i>	<i>Coal</i>	<i>9 1/2</i>
	<i>7</i>	<i>Charcoal & Coal</i>	<i>3</i>
	<i>8</i>	<i>Coal</i>	<i>19</i>
	<i>9</i>	<i>Pyrite</i>	<i>3/8</i>
	<i>10</i>	<i>Coal</i>	<i>15</i>
	<i>11</i>	<i>BB Gray Shale</i>	<i>1 1/4</i>
	<i>12</i>	<i>Coal</i>	<i>17 1/2</i>
		<i>Floor Clay</i>	
		<i>Tape 84 1/2</i>	<i>85 3/8</i>
		(Note character and thickness of floor)	
		Total thickness of coal.	<i>96 3/8</i>

Condition, *Dry* Time, ^{*12:45*} *3* hr. — min.
 Wt. Gross, *36* lbs. Net, *4* lbs.
 What Nos. shipped by Co.?

Excluded from sample: No. *1, 9, 11,*
 Sample represents *83 3/4* in. tons.
 Impurities? How do they occur?

Sample No. *N-21-96* Can No. *7761* Lab. No. *80610*

Collector, *Netzeband* Coal: Survey No. *6*
 Mine, *McClintock* Co. *Williamson* Index No. *0219-66-f3*

Operator, *Sears Coal Co*
 Mine, *McClintock*
 Located, *7 1/2* miles from *Johnston City*
 Location in mine, *Crosscut between 15th & 16th stub off 8th S.E.*

Date *July 23, 1921*
 Sec. *19* T. *8S* R. *3E*

GRAPHIC SECTION		DESCRIPTION OF SECTION (AT POINT SAMPLED)	
In.	No.	No.	Inches
		<i>Grey shale roof</i>	
		<i>1 Coal (left as roof) App. 12"</i>	
		<i>2 Coal</i>	<i>7 3/8</i>
		<i>3 Charcoal</i>	<i>3 1/4</i>
		<i>4 Coal</i>	<i>14</i>
		<i>5 Charcoal</i>	<i>7</i>
		<i>6 Coal</i>	<i>1/8</i>
		<i>7 Charcoal</i>	<i>24</i>
		<i>8 Coal</i>	<i>8 1/8</i>
		<i>9 Charcoal</i>	<i>1/2</i>
		<i>10 Coal</i>	<i>24</i>
		<i>11. B.B. Sh. & Bone coal</i>	
		<i>12 Coal</i>	<i>75 1/8</i>
		<i>Floor Clay</i>	
		<i>tape 76</i>	
		<i>Dark grey floor clay</i>	
		(Note character and thickness of floor)	
		Total thickness of coal. <i>11.10</i>	<i>87 1/8</i>
		Condition, <i>Dry</i>	Time, <i>11:00</i> <i>2</i> hr. <i>10</i> min.
		Wt. Gross, <i>34</i> lbs.	Net, <i>4</i> lbs.
		What Nos. shipped by Co.?	
		Excluded from sample: No. <i>1, 11</i>	
		Sample represents <i>74 5/8</i> in.	tons.
		Impurities? How do they occur?	

Sample No. *N-21-97* Can No. *782* Lab. No. *80612*
 Collector, *Natzband* Coal: Survey No. *6*
 Mine, *McClintock* Co. *Williamson* Index No. *OR 19-55-3*
 R.—COAL SAMPLE SHEET.