



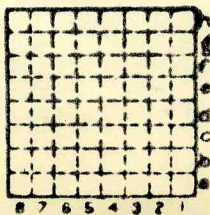
Form 180

NOKOMIS COAL Co.

Mi. #195

S-3

Co\*153



Sec. 27

T.	10	N.	<del>S</del>
R.	2	E.	<del>W</del>

Index No. 0627 E7





Mine originally operated by: (1) **Nokomis Coal Co.**

Date  
**1936**

*Nokomis ell*

Original name or number: **Reliance**  
Illinois Coal Report **1936** p.

LATER OPERATORS

Date	Operator	Name or No.
2		
3		
4		
5		
6		
7		
8		
9		
10		
11		
12		
13		
14		

Location shown in SW SW NW (1948)

*1946  
OK*

\* Also owners #See ownership sheet

Railroad, Wagon, Idle, Abandoned Shaft

5-3

IDENTIFICATION

County No.

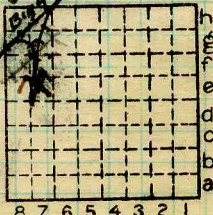
Coal No. **6**

Quad. **189**

Part

County **Montgomery**

*(1948)* 8' 4"



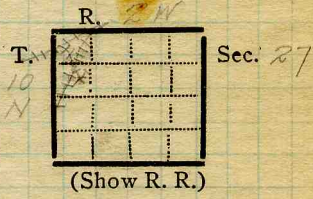
Sec. **27**  
T. **10 N.**  
R. **2 W.**  
Index No. **0627 e7**

COAL MINE OPERATOR



Town, *Nokomis* Surface alt., \_\_\_\_\_ ft.  
 Local Authority, *E.H. Hebenstreit* Depth to coal, *638* ft.  
 Level: Auth., *Put on mailing list. M. Mgr.* Alt. top coal, \_\_\_\_\_ ft.  
 Method, \_\_\_\_\_ Thickness: Av. *96* in.  
 Max. *108* in., Min. *87* in.

R. R., *a.c.c. & S.H.L., C.&E.I.*  
 Location: authority, *Mine map in office*



Operator \_\_\_\_\_ Mine Name or No. \_\_\_\_\_

19 *21* *Nokomis Coal Co* *No. 1*  
 Successor to \_\_\_\_\_  
 Date \_\_\_\_\_  
 Succeeded by \_\_\_\_\_  
 Date \_\_\_\_\_  
 Succeeded by \_\_\_\_\_  
 Date \_\_\_\_\_  
*Loc. from mine map  
 725' S 340' W  
 of cent. NW 1/4*

**PRODUCTION.**

							U. S. No.
19 <i>21</i>			<i>3400 - 3500 ton daily</i>		<i>Av.</i>		

Geol. Notes? *Yes* Coop. No. \_\_\_\_\_ Coal secs? *3*  
 Analyses No. \_\_\_\_\_

Examined by *Netzeband & Thurston* Ref. \_\_\_\_\_

Coal bed name: Local **SHIPPING MINE** Survey No. *6*  
 County *Montgomery* Index No. *0627.26*  
**K.—ACTIVE SHIPPING OR LOCAL COAL MINE.**



( Sheets ) COAL PRODUCTION ( Sheet )

No.	Period						Tons	
	Mo.	Day	Year	Mo.	Day	Year		
3	1	1	1936	12	31	1936	91	308
3	1	1	1937	12	31	1937	467	138
S-3	1	1	1938	12	31	1938	380	408
						1939	569	297
						1940	741	293
S-3	1	1	1941	12	31	1941	785	677
S-3	1	1	1943			1942	900	159
						1943	980	254
						1944	982	346
						1945	949	517
						1946	842	210
						1947	923	812
						1948	925	221
						1949	790	674
						50	746	046
						51	578	996
						52	187	142

This cannot be production of #195 which closed in 1928 according to Mine Directory

SUMMARIES

No.	to	No.				

Railroad, Wagon, Idle, Abandoned

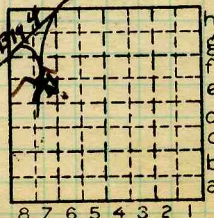
IDENTIFICATION

S-3

County No. Coal No. 6

Quad. 189 Part

County Montgomery



Sec. 27

T. 10 N.

R. 2 W.

Index No.

0627 e7



Nokomis Coal Co.

1.) #1 Air course between 15<sup>th</sup> & 16<sup>th</sup>  
and 17<sup>th</sup> & 18<sup>th</sup> Rooms, W side of  
Main NW

∴ Photograph of section showing  
place of coal above #6.

2) Overcast, showing upper  
coal between 2 ls.

3) 2<sup>nd</sup> Air Course on W. side of  
Main NW, about 1 mi. & 1800'  
from bottom

Large ls. roll, just reaching  
top of coal.



LOCATION AND ELEVATION

Location: **E** side **B194** **Eside Spur** R. R.  
 side R. R.  
 side Highway No.

on top. map Location sheet

Elevation: Method, 1. Est. ( ) \_\_\_\_\_ ft.  
 2. Inst. (kind \_\_\_\_\_) \_\_\_\_\_ ft.

By	Data sheet
<b>DEPTH</b>	
Authority	To coal <u>640</u> ft.
Authority	- Rail to rail _____ ft.
	Top of coal above rail. (Est. Rule) _____ ft.
	To coal _____ ft.

**ALTITUDE OF TOP OF COAL**  
 By estimated data \_\_\_\_\_  
 By instrumental data \_\_\_\_\_ ft.

Thickness  
 Max. \_\_\_\_\_ in. Min. \_\_\_\_\_ in. Aver. 100 in.

**GEOLOGICAL DATA**  
 Mine notes, date None \_\_\_\_\_  
 \_\_\_\_\_  
 Coop No. \_\_\_\_\_ Pyr. inv. \_\_\_\_\_ Coal Ash inv. \_\_\_\_\_

**CHEMICAL DATA**

Analyses	Face	U. I.	B. M.	Others
Car	U. I.	B. M.	Others	
Org. Sulf	U. I.	B. M.	Others	
Ash fusion	U. I.	B. M.	Others	
Ash anal.	U. I.	B. M.	Others	
	U. I.	B. M.	Others	

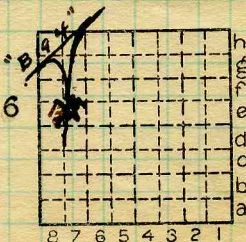
**Classification**  
 Misc. tests: Coking. \_\_\_\_\_ Cleaning \_\_\_\_\_ Boiler \_\_\_\_\_

Published descriptions:—

Railroad, Wagon, Idle, Abandoned

**S.3** IDENTIFICATION  
 County No. \_\_\_\_\_  
 Quad. **189**  
 County **Montgomery**

Coal No. **6**  
 Part



Sec. **27**  
**10** N. E.  
 T. \_\_\_\_\_  
 R. \_\_\_\_\_  
**2W.**  
 Index No. **0627 e7**

COAL MINE LOCATION AND DATA



2924

John C. Moore Corporation, Rochester, N. Y. Binder and holes in leaves, each Patented 1906.

85243-200-3-23)

Mine Name or No. Reliance #9 Mine Address Nokomis, Ill.

Operator Illinois Coal Corporation

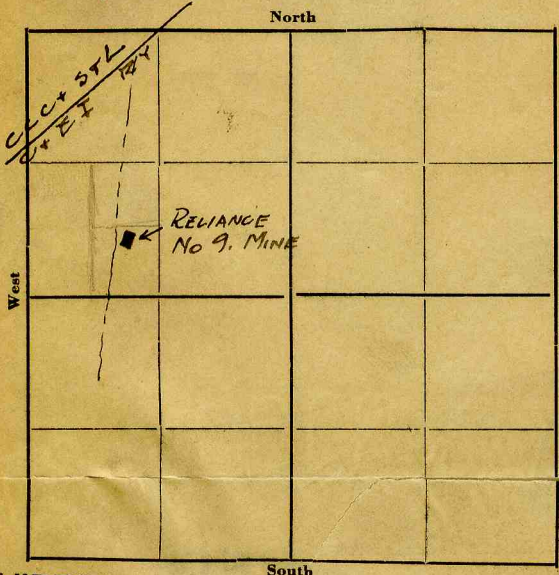
Main Office Address 37 West Van Buren St.

Formerly No. 1 Mine, Nokomis Coal Co.  
Location of Mine: Chicago, Illinois

Township Name Nokomis County Montgomery

Section No. 27 Township 10 Range 2 W

Indicate location of mine and position of R. R. in plat of section below.



Kindly state number of feet from quarter section lines:

..... from N. line

1670 from E. line

550 from S. line

..... from W. line

Idle entire year 1924 Yes No.

Abandoned (date) 19.....

### SHIPPING MINE

Surface landing is ..... feet above sea level or about ..... feet (above

(below) railroad station at ..... (nearest town)

Depth to top of coal is 640 feet.

Average thickness of coal is 8' feet 1" inches.

. Do not fill in below this line.

Coal Bed Name ..... Survey No. ....

County Montgomery Index No. 4627

### V-MINE LOCATION SHEET.

COUNTY NO: 153



Mine ~~originally~~ operated by: (1) **Nokomis Coal Co. #1**  
 Date **1913** **COAL REPORT** **Nokomis.**

Original name or number:  
 Illinois Coal Report p.

LATER OPERATORS

Date	Operator	Name or No.
2	1922 ILL. COAL CORP.	9
3	1928 Lincoln Coal Corp	Black Diamond
4	: IDLE 1926 thru 1935 (McBee file)	
5	1936 Nokomis Coal Co.	#1 or Reliance
6		
7		
8		
9		
10		
11		
12		
13		
14	Abandoned 1953	



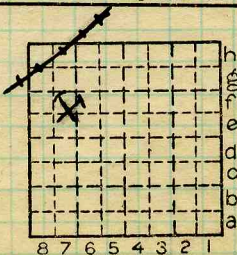
\* Also owners # See ownership sheet

Railroad, Wagon, Idle, Abandoned

**SHIPPING MINE**

IDENTIFICATION

County No. **153** Coal No.   
 Quad. **189** Part   
 County **MONTGOMERY**



Sec. **27**  
 T. **10** N.  
 R. **2** E.  
 Index No.

**0627.7f**

COAL MINE OPERATOR





( Sheets ) COAL PRODUCTION ( Sheet )

Period						Tons			
Mo.	Day	Year	Mo.	Day	Year				
					1927	— 0 —			
					1928 (Idle)				

SUMMARIES

No.	to	No.				

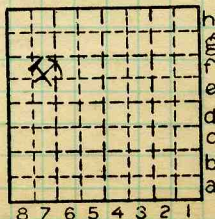
Railroad, Wagon, Idle, Abandoned

IDENTIFICATION

County No. 153 Coal No.

Quad. 189 Part

County Montgomery



Sec. 27

T. 10 N.  
~~S.~~  
 R. ~~E.~~  
 2 W.  
 Index No.



LOCATION AND ELEVATION

Location: side CCC + St. L. ; C. & E. I. R. R.  
 side R. R.  
 side Highway No.

on top. map Location sheet

Elevation: Method, 1. Est. ( ) \_\_\_\_\_ ft.  
 2. Inst. (kind \_\_\_\_\_) 663.3 ft.

By Med Data sheet

DEPTH

Authority To coal \_\_\_\_\_ ft.  
 Authority Rail to rail \_\_\_\_\_ ft.  
 Top of coal above rail. (Est. Rule) \_\_\_\_\_ ft.  
 To coal 638 ft.

ALTITUDE OF TOP OF COAL

By estimated data \_\_\_\_\_  
 By instrumental data 25 ft.

Thickness

Max. 102 in. Min. 84 in. Aver. 96 in.

GEOLOGICAL DATA

Mine notes, date \_\_\_\_\_  
 \_\_\_\_\_

Coop No. 195 Pyr. inv. Coal Ash inv.

CHEMICAL DATA

Analyses Face	U. I.	B. M. <u>81093-4-5-6</u>	Others
Car	U. I.	B. M.	Others
Org. Sulf	U. I.	B. M.	Others
Ash fusion	U. I.	B. M.	Others
Ash anal.	U. I.	B. M.	Others
	U. I.	B. M.	Others

Classification

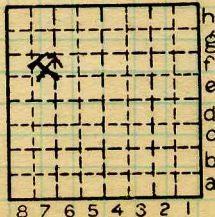
Misc. tests: Coking. Cleaning Boiler

Published descriptions:—

Railroad, Wagon, Idle, Abandoned

IDENTIFICATION

County No. 153 Coal No.   
 Quad. 189 Part  
 County



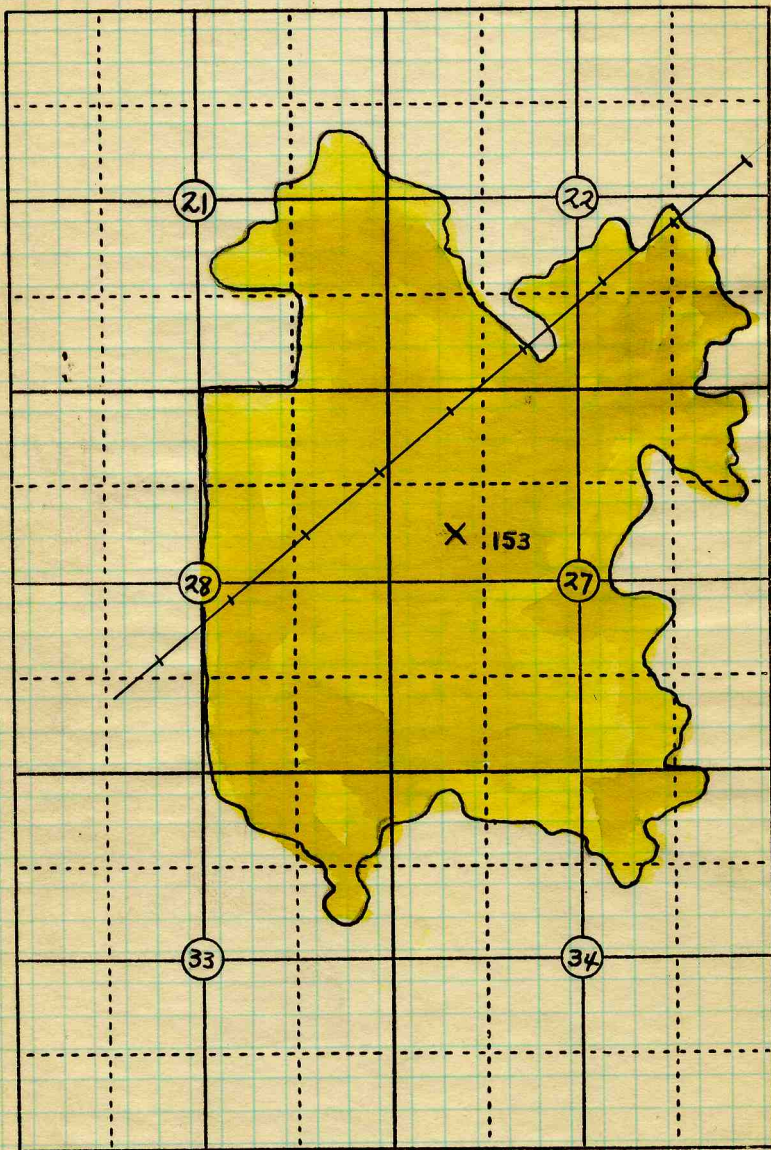
Sec. 27

T. 10 N.  
 S. \_\_\_\_\_  
 R. 2 W.  
 Index No.

Montgomery

COAL MINE LOCATION AND DATA

0627.7f



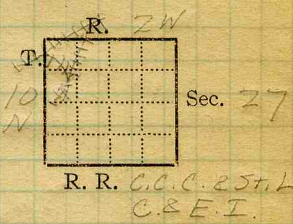
# TION R2W

Map  
 Date 10-20-24 Operator Lincoln C. Corp. Name or No. 9

County Montgomery Index No. (Ind. & Ill. Coal Co) 0627.7f



Mine Name or No., *No. 1*  
*1/2* mile *S.W.* from *Nokomis*  
Operator, 19*21* *Nokomis Coal Co.*



Operator, 191

Entrance, *shaft* Elev., ft.  $\left\{ \begin{array}{l} \text{above,} \\ \text{below,} \end{array} \right.$   
Depth to ~~bottom~~ coal, *638?* ft. Alt.

SURFACE DATA.

A. Topography, *Flat* See  
B. Surficial materials. (1) Character, *Till.*

(2) Thickness, *No information* (3) Effect on mining and shaft-sinking, of former drainage lines, underground water strata, etc. *No information.*

C. Outcrops, (1) Character, See  
(2) Structure, See  
(3) Fossil horizons, See  
Collection No.,  
(4) Evidences of subsidence, See

D. Note collection of mine maps, drill records and shaft logs.  
*L.O. Starr, Eng. Nokomis, Ill.*

See drill record sheet,

E. Notes on surrounding area,

See

Coal bed name: Local, Survey No. *6*

Collector, *Netzeband*

Mine, *Nokomis No. 1* Co. *Montgomery* Index No. *0627.26*



F. Thickness of rock above bed worked, *No information*  
 (1) Important variations, See

G. Note presence of strata having important effect on mining, See

- Black shale roof requires timbering.*  
 (1) Position, *Above coal*  
 (2) Character, *Black, well bedded to massive.*  
 (3) Persistence, *Thru out mine*  
 (4) Other workable coal beds, See

H. Cap rock, *Limestone*  
 (1) Thickness, *No information*  
 (2) Height above coal, *6"-60"* See

I. Immediate roof, *Black shale.*  
 (1) Thickness, *6"-60"* (2) Contact with coal, *Clean & regular.*  
 (3) Horizontal variation, See

J. Draw slate. (1) Thickness, *None.* (2) Contacts  
 (3) Persistence, See

K. Coal bed: Max. *108* Min. *84* Av. *96* inches

- (1) Benches, *Two*  
 (a) Position, *Above & below B.B*  
 (b) Persistence, *Thru out mine.* See  
 (2) Bedded impurities, kind, position in benches, persistence, ease of separation. *B.B. grey shale,*

*soft (1" to 3"), charcoal bands & lenses.*

(3) Irregularities in continuity of bed (due to deposition, erosion, or movement, *A very few* See

(a) Effect on mining, *small slips.* *None.* See

SECTION				
Ft.	in.	Name		Sym.
		Limestone		
?		Black sh.		
5		Coal		
8		Floor clay		
3		Limestone		
?				

Collector, *Netzaband*

Coal: Survey No. *6*

Mine, *Nokomis #1 Co. Montgomery*

Index No. *06 27-26*



## K. (5) Physical character of coal in benches,

(a) Relative hardness, *Same as rest of Montgomery**County*(b) Lustre, *Upper 2 1/2' bright with glaucous, dull with bright*(c) Fracture, *hackly. Cleavage not well developed.*(d) Texture, *Laminated.*

See

## (6) Impurities in coal, other than bedded,

(a) Kind,

(b) Position and persistence,

(c) Rejected,

Ease of separation,

See

L. Floor: (1) Material, *Floor clay* *h.s. below.*(2) Thickness, *1-3'*(3) Variation, *Little variation in character.*(4) Note character, condition, tendency to heave, relation to undercutting commercial value. *Light grey, crumbles upon exposure**to air, heaves as much as 6" after first 6 months used to undercut upon, value unknown.*

See

(5) Clay sample No.

Location,

## M. Stratigraphy,

(1) Fossiliferous horizons underground,

Collection No.

Location,

## N. Notes on effect of deep drilling in coal mine areas.

See

Collector, *Natzaband*Coal: Survey No. Mine, *Nokomis #1* Co. *Montgomery*Index No. *0627.26*



NDEX

(36713-500-7-20)

I. The immediate roof in the N.W. is black sh. from 6" to 6' thick.  
 In the Air Course off the 11th Left N.E., the roof is black sh., massive, 2 1/2' thick.

G Above the black sh. is 18' of a dark grey shaly limestone, carbonaceous. Above the lime is 3' of black, carb. sh. with 1/8" to 1" stringers of coal running thru it. It is probably limy. Near the top there is a 9" bent coal lens. Above this is a grey sh. probably limy, slickensided. Lying above this with an uneven contact is the limestone.

At the shaft bottom there is 6' of black sh. This thins out toward the S.E. till near the face there is only 6" to 1' of black sh. Here from 1" to 3" of soft grey sh. lies between the black sh. & the limestone. The lower contact of the limestone is uneven here also.

Collector *Thurston*

Index No. *0627.26*

X- / EXTRA NO. 1

County *Montgomery*



Operator, *Nokomis Coal Co.* Date *Aug. 22, 1921*  
 Mine, *Nokomis #1* Sec. *27* T. *10N* R. *2W*  
 Location in mine, *Room 2, 9th Right off NW*

GRAPHIC SECTION		DESCRIPTION OF SECTION (AT POINT SAMPLED)	
In.	No.	No. (Note character and thickness of roof)	Inches
		<i>Black shale.</i>	
		<i>1 Coal</i>	<i>27</i>
		<i>2 pyrite</i>	<i>1/8</i>
		<i>3 Coal</i>	<i>11 1/4</i>
		<i>4 Clay</i>	<i>1/4</i>
		<i>5 Coal</i>	<i>23 1/2</i>
		<i>6 Charcoal</i>	<i>1/2</i>
		<i>7 Coal</i>	<i>17 1/2</i>
		<i>8 clay mixture</i>	<i>1/4</i>
		<i>9 Coal</i>	<i>3 1/4</i>
		<i>10 pyrite lens</i>	<i>1/4</i>
		<i>11 Coal</i>	<i>1 1/4</i>
		<i>12 gray shale BB</i>	<i>1</i>
		<i>13 coal</i>	<i>2 1/2</i>
		<i>Tapel 104 1/4</i>	
		<i>Light gray floor clay.</i>	
		(Note character and thickness of floor)	
		Total thickness of coal.	<i>146 3/8 104 3/8</i>
		Condition, <i>Dry</i>	Time, <i>1 hr. 35 min.</i>
		Wt. Gross, <i>44 lbs.</i>	Net, <i>4 lbs.</i>
		What Nos. shipped by Co.?	
		Excluded from sample: No. <i>10, 12</i>	
		Sample represents <i>103 3/8</i> in.	tons.
		Impurities? How do they occur?	

(1 division = 3 in.)

Sample No. *N-21-128* Can No. *229* Lab. No. *81093*  
 Collector, *Nat Zehand* Coal: Survey No.   
 Mine, *Nokomis #1* Co. *Montgomery* Index No. *0627.26*  
**R.—COAL SAMPLE SHEET.**





Operator, *Nokomis Coal Co.* Date *Aug 22, 1921*  
 Mine, *No. 1* Sec. *27 T. 10N R. 2W.*  
 Location in mine, *Air course off 12<sup>th</sup> Right, N. E Main*

GRAPHIC SECTION		DESCRIPTION OF SECTION (AT POINT SAMPLED)		
In.	No.	No.	(Note character and thickness of roof)	Inches
			<i>Black shale</i>	
		<i>1</i>	<i>Coal</i>	<i>20 1/4</i>
		<i>2</i>	<i>pyrite lens</i>	<i>3 3/8</i>
		<i>3</i>	<i>Coal</i>	<i>6 1/4</i>
		<i>4</i>	<i>pyrite lens</i>	<i>1 7/8</i>
		<i>5</i>	<i>Coal</i>	<i>30</i>
		<i>6</i>	<i>pyrite band</i>	<i>1 1/8</i>
		<i>7</i>	<i>Coal</i>	<i>11</i>
		<i>8</i>	<i>pyrite + charcoal</i>	<i>1 1/4</i>
		<i>9</i>	<i>Coal</i>	<i>5 1/2</i>
		<i>10</i>	<i>Brown shale + pyrite</i>	<i>1 1/2</i>
		<i>11</i>	<i>Coal</i>	<i>3</i>
		<i>12</i>	<i>Brown shale + pyrite</i>	<i>1</i>
		<i>13</i>	<i>Coal</i>	<i>2 1</i>
			<i>Tape 100</i>	
			(Note character and thickness of floor)	
			Total thickness of coal.	<i>100 7/8</i>
Condition, <i>Dry, fresh</i> Time, <i>2 hr. 45 min.</i>				
Wt. Gross, <i>40</i> lbs. Net, <i>7</i> lbs.				
What Nos. shipped by Co.?				
Excluded from sample: No. <i>2, 10, 11, 12</i>				
Sample represents <i>94 1/4</i> in. tons.				
Impurities? How do they occur?				

(1 division = 3 in.)

Sample No. *N-21-129* Can No. *20725* Lab. No. *81094*  
 Collector, *Notzaband* Coal: Survey No.   
 Mine, *Nokomis #1* Co. *Montgomery* Index No. *0627.26*  
**R.—COAL SAMPLE SHEET.**



Operator, *Nokomis Coal*

Date *Aug. 22, 1921*

Mine, *No. 1*

Sec. 27 T. 10N R. 2W

Location in mine, *11<sup>th</sup> Right entry off main 3E.*

GRAPHIC SECTION		DESCRIPTION OF SECTION (AT POINT SAMPLED)		
In.	No.	No.	(Note character and thickness of roof)	Inches
			<i>Black shale</i>	<i>12</i>
		<i>1</i>	<i>Coal left as roof 2"</i>	
		<i>2</i>	<i>Coal</i>	<i>42 1/4</i>
		<i>3</i>	<i>Charcoal</i>	<i>1/4</i>
		<i>4</i>	<i>Coal</i>	<i>21 1/4</i>
		<i>5</i>	<i>Charcoal + pyrite</i>	<i>1/4</i>
		<i>6</i>	<i>Coal</i>	<i>2</i>
		<i>7</i>	<i>pyrite + gray shale, BB</i>	<i>3/4</i>
		<i>8</i>	<i>Coal</i>	<i>14 1/2</i>
		<i>9</i>	<i>Charcoal</i>	<i>1/4</i>
		<i>10</i>	<i>Coal</i>	<i>2 1/4</i>
			<i>Tap 8 3/2</i>	
(Note character and thickness of floor)				
Total thickness of coal. <i>286</i>				<i>8 3/2</i>
Condition, <i>Damp, fresh</i>		Time, <i>1 hr. 36 min.</i>		
Wt. Gross, <i>26</i> lbs.		Net, <i>4</i> lbs.		
What Nos. shipped by Co.?				
Excluded from sample: No. <i>1, 7</i>				
Sample represents <i>82 3/4</i> in.				tons.
Impurities? How do they occur?				

(1 division = 3 in.)

Sample No. *N-21-130* Can No. *10934* Lab. No. *81095*

Collector, *Hetzaband* Coal: Survey No.

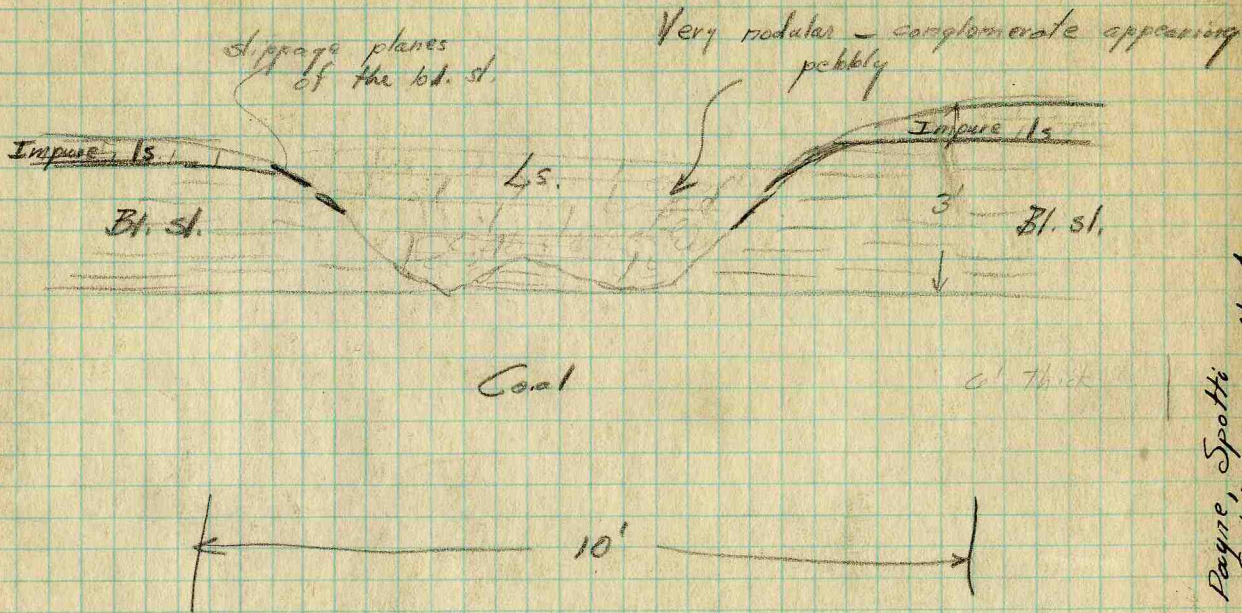
Mine, *Nokomis #1* Co. *Montgomery* Index No. *062726*

R.—COAL SAMPLE SHEET.



S-3

TION R. 2W



2<sup>nd</sup> Air Course on W. side of Main NW about 1 mi + 800' from bottom

Nokomis Coal Co

Cady, Payne, Spotti  
Nokomis Coal Co.  
MONTGOMERY



Nokomis Coal Co

#1 Air Course off 7<sup>th</sup> E. - Right, off Main NW.

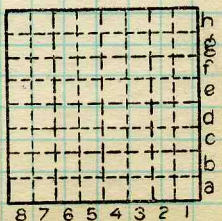
Here bk st only 18" thick,  
 Above bk st 4 $\frac{1}{2}$ " calc. hard  
 shale. This is overlain  
 by the lower ls. ledge which  
 is not broken through here

The lower ls. is somewhat  
 slabby and in places breaks  
 off. - Its locally at least  
 4 ft thick

By Cady Date Aug. 7/40

Quad. \_\_\_\_\_ Part. \_\_\_\_\_

County Montgomery



Sec.

T. N.  
 S.  
 E.  
 R. W.  
 Index No.

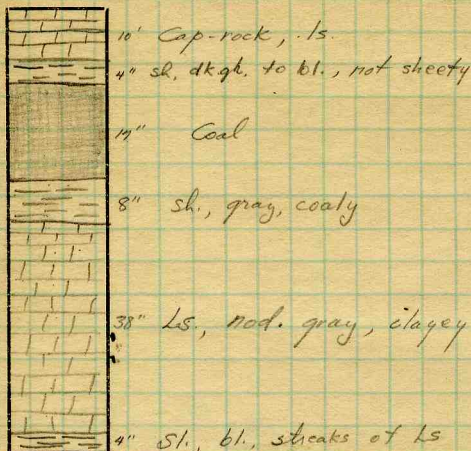
0627



Symbol *6*  
 1 division = *3 in.*

Description

Inches



7'-6" Coal

1<sup>st</sup> O.C. over Main SE  
 500' from bottom.

Collector. *Cady, Payne, Spotti*  
 Mine *Nokomis C.C. Co. Mont.*  
 Q.—COAL SECTION SHEET.

Coal: Survey No.  
 Index No.

*6*

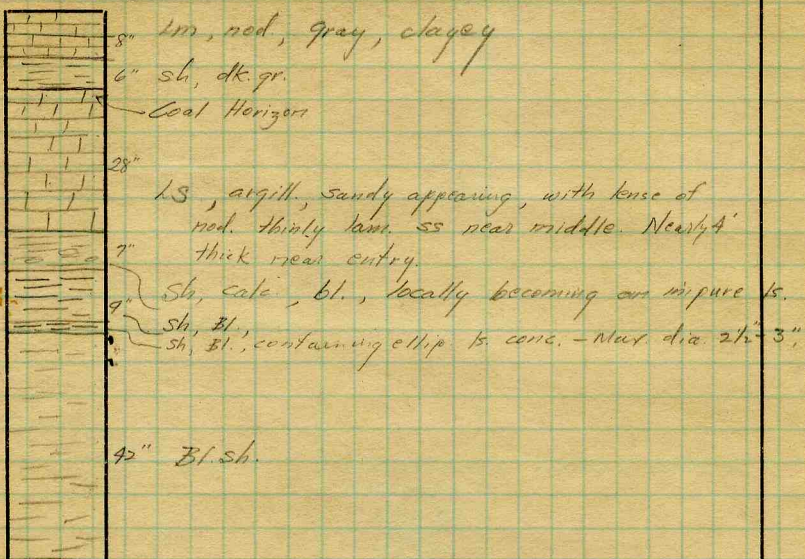


Symbol 6"

Description

Inches

1 division = 3 in.



Coal  
7'

1<sup>st</sup> Overcast, over main  
SE, 500'± from bottom

Collector. Cady, Payne, Spotti

Coal: Survey No.

Mine. Nokomis C.C. Co. Montgomery

Index No.

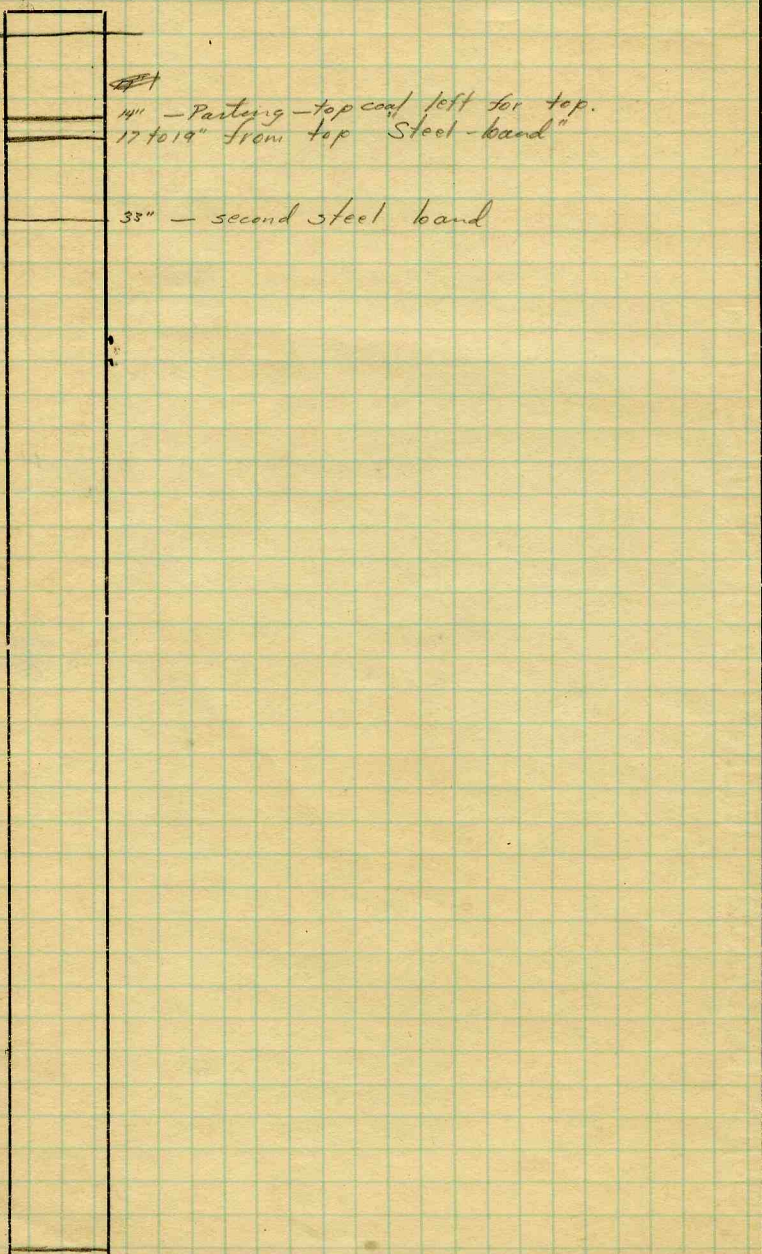
Q.—COAL SECTION SHEET.

COUNTY NO.



Symbol Description Inches

[1 division=3 in.]



Collector. *Cady, Payne, Spotti*  
Mine. *Nokomis C.C. Co. Morit.*  
Q.—COAL SECTION SHEET.

Coal: Survey No. 6  
Index No.

Nokomis C. C.

Nokomis.

Rolf W. Roley

Jan. 31, 1947

Sect. 27 10N - 2W

Montgomery County



Jan 31, 1947

Bottoms timbered with 10" x 4 1/2" I-beams  
planked over with 2" x 12" wood.

It used to be used for seats for men waiting  
to go to man-traps or for a cage to get out.  
There is head room above that is prop timbered.

Normally when have a slate or ls. roof  
work is carried out ok.

In some new work the slate is too  
filled with ls. nodules (angular) or  
small clay partings and badly slipped.  
In this same area the coal is thinning  
down - (Could this be approach to cut out)  
The slate thickness remains about the  
same as it changes character (thickness  
no function of quality) But slab thickness  
over the mine is very variable (0.4 to 5')  
In the new bed area slab = ± 3 1/2' with  
some spots showing a scopstone (liberty)  
parting in the middle.

The underside of the ls. is very uneven  
with a nodular appearance. In some  
spots the lower part is black and rather  
soft like the Black Bastard ls. of Madison  
County - highly fossiliferous. ▽

Inside in work territory wooden timber is  
used as needed but no pines. U-R. Rails  
with wood ties are placed about every  
7-15' (varies)

In one spot the roof <sup>ls</sup> seemed to  
be alternate layers of intergraded dark and  
light poor grade ls. The dark having almost  
a olive green color. (Sample 1)

The quality of the roof and the lithology change  
quickly and because of falls and general conditions  
it is very difficult to determine how the changes  
take place.

Sample 2 = normal Black Slit.

(<sup>10</sup> I-beams on the main bottom show evidence of piling in lateral bending. The ribs are apparently putting considerable end pressure on the I-beams and they bend laterally. Sometimes being as much as 5" out of line.)

The bottom sheaf of ls is sometimes very much like clod after air drying

Sometimes the top part of the slate weathers Brown. Always indicates change to bed.

Cesspool construction for 200 mm.  
Water Boiler Treatment.



# Nokomis Coal Co

The roof in this mine is mainly coal, The top 12' to 15" of the bed being left up

Elsewhere it is bk shale up to 3 to 4 ft thick where the coal has broken down - In overcasts and elsewhere -

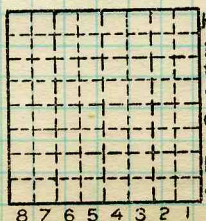
There is a layer of somewhat slabby nodular <sup>3ft</sup> ls above the black shale and at the top a carbonaceous layer 6-8" thick. Thus at one place the is represented by a coal bed 15" thick.

Above is a massive ls - several ft thick - which of these ls is caprock (Herrin ls) cannot be said

By G. L. Cad Date \_\_\_\_\_

Quad. \_\_\_\_\_ Part \_\_\_\_\_

County Montgomery



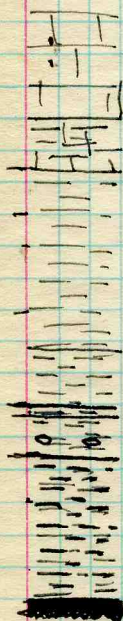
Sec. N. S. E. W. Index No.

0627



# Nokomis Coal Co.

Room #3. 2nd right, off 18<sup>th</sup> East, off Main SW



Ls. light gray, with shaly streaks.

Lower Ls. about 2-3'

(Cap. rock?)

Bk, fossilif ls - imp. with sh. streaks - 6"-8"

Sh. dk gr. with

occasional ls. conc 33"

Sh. soft dk - about 1" 1"

Sh. qk gr, small, calc. conc. 5"

Sh. bk, sheety, 18"

No concretions

Coal

Top coal 12-15"

Parting - Thin skin of clay  
in places fusain

Coal 18"-20"

Steel band  $\frac{1}{8}$  -  $\frac{3}{4}$ " pyrite

~~Here 3"~~ from top

2nd steel band 3-4" below

By G. H. Cady Date Aug 7/40

Quad. Part.

County Montgomery

	h	Sec.	N.
	r	T.	S.
	e		E.
	d	R.	W.
	c		
	b		
	a	Index No.	
8	7	6	5
4	3	2	1

0627



## Nokomis Coal Co

2nd Air Course E. side Main NW.

1 mile + 500' to bottom

Here the bottom of the ls forms a knob about 10 ft long 6 to 8 ft broad that extends completely through the bk slate down to the level of the top of the coal bed. The knob is quite conglomeratic containing fragments of ls and hard calc. shales.

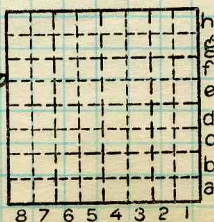
By G.H.C.

Date Aug 7/40

Quad.

Part.

County Montgomery



Sec.

T.

R.

Index No.

N.

S.

E.

W.

0627.



Visited this mine with Dr. G. H. Cady and A. E. Spotts.

Two steel bands are said to be persistent over the entire mine generally found respectively 17-19" + 33" from the top.

The roof strata of this mine is peculiar in that there is a coal horizon occurring 4 to five feet above the top of the No. 6 coal, and in one locality 17" of coal was measured at this horizon.

Following are measured sections of the roof strata at three localities in the mine: -

I. No. 1 Air course between 15 & 16 and 17 & 18 R on the W side of the main NW

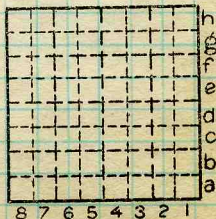
- |    |                                                                                                           |      |
|----|-----------------------------------------------------------------------------------------------------------|------|
| 7. | Limestone, nodular, gray, clayey                                                                          | 7"   |
| 6. | Shale, dark gray, smooth                                                                                  | 5-6" |
| 5. | Limestone, argillaceous, sandy, gray with thin, laminated sandstone lenses, nodular to lenticular bedding | 28"  |
| 4. | Shale, calcareous, black, grading upward into impure limestone                                            | 7"   |
| 3. | Shale, black                                                                                              | 9"   |
| 2. | Same containing elliptical limestone concretions                                                          | 2"   |
| 1. | Shale, black, sheety                                                                                      | 42"  |
| 0. | Coal No. 6 -                                                                                              |      |

Stems 4 and 5 are said to total 4' in thickness nearer the main entry.

Date 8/7/40 T. .... R. ....

Mine Quad. Nokomis #1 Part .....

County Montgomery Index No. 0627





II. No. 1 Air Course off 17<sup>th</sup> R of Main N.W.

415.	Limestone very impure, dark gray, fossiliferous	5"
3.	Shale, black	3"
2.	Same, elliptical limestone concretions	2"
1.	Shale, black shaly	13"

III. 1st. overcast over main SE 500' from bottom

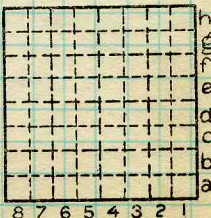
7.	Limestone gray, dense, fine-grained	10"
6a & b.	Shale, black	4"
6B.	Coal	17"
6A & b.	Shale, gray, streaks of coal	8"
445.	Limestone impure, gray, nodular	38"
1, 2 & 3	Shale, black, shaly, streaks of limestone	4"
0	Coal No. 6	72" +



Date 8/2/40 T. .... R. ....

Quad. Nokomis #1 Part. ....

County Montgomery Index No. D627



8 7 6 5 4 3 2 1





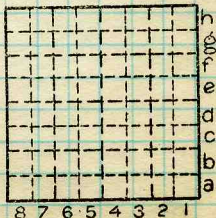
In the #2 Riv course on the E side of the  
Main NW, 1 mile 500' northwest of the  
bottom was an excellent exposure of a limestone  
mass 10' long by 6' wide by 3 feet deep. The  
limestone in this mass was nodular and  
conglomeratic containing some fragments of  
shale. A thin band of limestone occurring  
between the black slate and the caprock  
seemed to extend up to this "mass" and  
feather out. (see diagram below next page)

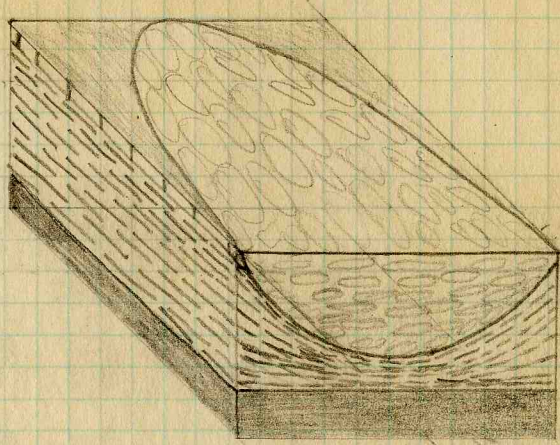
NP

Date 8/7/40 T. \_\_\_\_\_ R. \_\_\_\_\_

Quad. Nekomis #1 Part \_\_\_\_\_

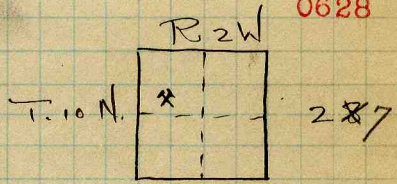
County Montgomery Index No. 0627







0628



Sokolonis Coal Co. #1

M.C.D. E1. 663.3.

Depth coal #6. 658' 4" top.

Shatt. 669' 1".

Montgomery Co.

06287