

FIELD NOTES
Illinois State Geological Survey

(04W36.2h NW - 3h NE)

September 23, 1931.

South side of road:

Sand, calcareous, yellow brown, very fine to quite fine, with sticky brown strongly calcareous clay washed down above it, ill-exposed at base of 8' bank. The clay seems to be weathered post-sand loess!

(04W36.)

Wind-blown? sand along road east from center of west edge of section; is least evident where road is lowest, where is clayey-silt - sand rises on hill to east; at point marked by dot, is till, gray brown, calcareous, pbl. overwash, ill-exposed, some sand washed on up on slope to east as far as traversed on road.

5d NW
corner

5b NW±

Grant Coal Company mine, Pekin: - shaft, union: - 150-160 tons per day. 100' to coal - #5 probably. Delivery and local call for trade - all domestic. Top vein is 35' down.

Surface to top vertically 35'

Top vein - 35' from surface - in pocket.

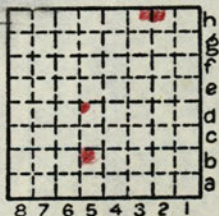
Has blue band near center! to 5'

Fireclay.

Rock - says is not regular sand rock although like. Harder and "glassier" than sand rock.

(Continued next page)

Is outcropping here



By T.B. Root

Date 9/23/31

Quadrangle Peoria

County Tazewell

Sec. 36

T 25N

R 5W