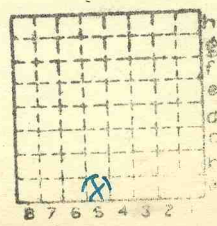


See 23-95-4E.
one of these is incorrect
but both are shown on
mired out area map.

Red Wing Co.

L-27

572



Sec. 23
 T. 9 N.
 S. 9 S.
 R. 7 E.
 W. 7 W.
 Index No.

✓

Location and Elevation Data

Location: Exact Approximate
(Approximate only if no trace of record of original exists)

Location by E.F.T. (In field)

Date 5/14/38 Notebook No. Page

Looseleaf ref.

Map files No.

Description of Location

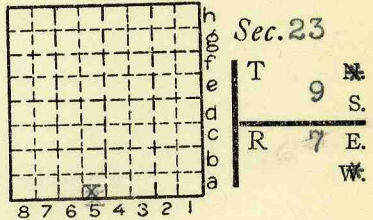
Position in sec., 1/4 sec., 40 acres

feet from North line

feet from East line

feet from South line

feet from West line



Other description: SE SE L-27

Range 6 E 1939

Farm

No.

Company Red Wing Coal Co.
(William Karnes, Oper)

No.

County No. 572

Elevation 420 ft.

By EFT

Method: Level, transit, alidade, hand level
TM

Elevation of

Height of point above ground

Date Notebook P.

Looseleaf ref.

Map files No.

Description of item: (drill hole, mine, etc.) Slope Mine
4 1/2 ft of #5 coal

County Saline Quadrangle 274 Index No. 0723 a5