



Form 180 Blue

DEPTH OF COAL 57.3'
THICKNESS OF COAL 3'9"
FROM 1961 M+M REPORT

Location sheet filed ✓

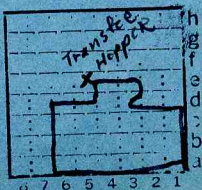
abandoned June / 1964

Midland Elec. C. Corp., # |

Co # 143

M.I. # 681

S-11



Sec. 22 ES

T. 16 N.

R. 6 E.

Index No.

BUREAU



Mine originally operated by: (1)

Date 1946 Midland Electric Coal Corp.

Original name or number:

Illinois Coal Report 1954 p. 73

Atkinson

LATER OPERATORS

Date	Operator	Name or No.
2 <u>1957</u>		<u>Mine # One</u>
3		
4		
5		
6		
7		
8		
9		
10		
11		
12		
13		
14		

*Also owners

#See ownership sheet

Railroad, Wagon, Strip, Idle, Abandoned June, 1964

1946

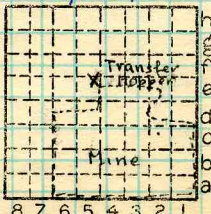
IDENTIFICATION

County No. 143 Coal No.

Coal Report No. S-11 35' to 6

Quad. Annawan (1958) 4'6"

County Bureau



Sec. 27

T. 16 N.

R. 6 E.

Index No.

1822

COAL MINE OPERATOR



(Sheets) COAL PRODUCTION (Sheet)

Period				Tons			
Mo.	Day	Year	Mo.	Day	Year		
					1947	576	388
					1954	698	964
					1955	794	394
					1956	777	235
					1957	875	544
					1958	505	313
					1959	517	958
					1960	374	123
					1961	306	558
					1962	290	263
					1963	322	214
					1964	258	932

(144,929 T mined - Henry Co)
 (27,611 T " - " ")

SUMMARIES

No.	to	No.				
-----	----	-----	--	--	--	--

Railroad, Wagon, Strip, Idle, Abandoned

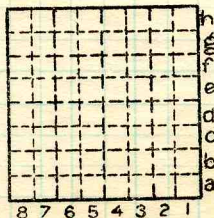
1976

IDENTIFICATION

County No. 143
 Coal Report No. S-11
 Quad. Annawan
 County Bureau

Coal No.

6



Sec. 22

T. 16 N.

R. 6 E.

Index No.

1822

COAL MINE-PRODUCTION

ILLINOIS GEOLOGICAL SURVEY, URBANA





LOCATION AND ELEVATION

Location: side R. R.
 side R. R.
 side Highway No.

on top. map Location sheet

Elevation: Method, 1. Est. () ft.
 2. Inst. (kind) ft.

By Data sheet

DEPTH

Authority To coal ft.
 Authority Rail to rail ft.
 Top of coal above rail. (Est. Rule) ft.
 To coal ft.

ALTITUDE OF TOP OF COAL

By estimated data

By instrumental data ft.

Thickness

Max. in. Min. in. Aver. in.

GEOLOGICAL DATA

Mine notes, date

Coop No. Pyr. inv. Coal Ash inv.

CHEMICAL DATA

Analyses Face	U. I.	B. M.	Others
Car	U. I.	B. M.	Others
Org. Sulf	U. I.	B. M.	Others
Ash fusion	U. I.	B. M.	Others
Ash anal.	U. I.	B. M.	Others
	U. I.	B. M.	Others

Classification

Misc. tests: Coking. Cleaning Boiler

Published descriptions:—

Railroad, Wagon, Idle, Abandoned Strip 1946

IDENTIFICATION

County No. 143

S-11

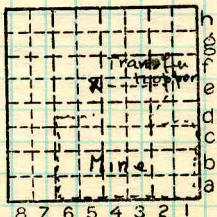
Quad. Annawan

County Bureau

Coal No.

□ 6

Part



Sec. 22

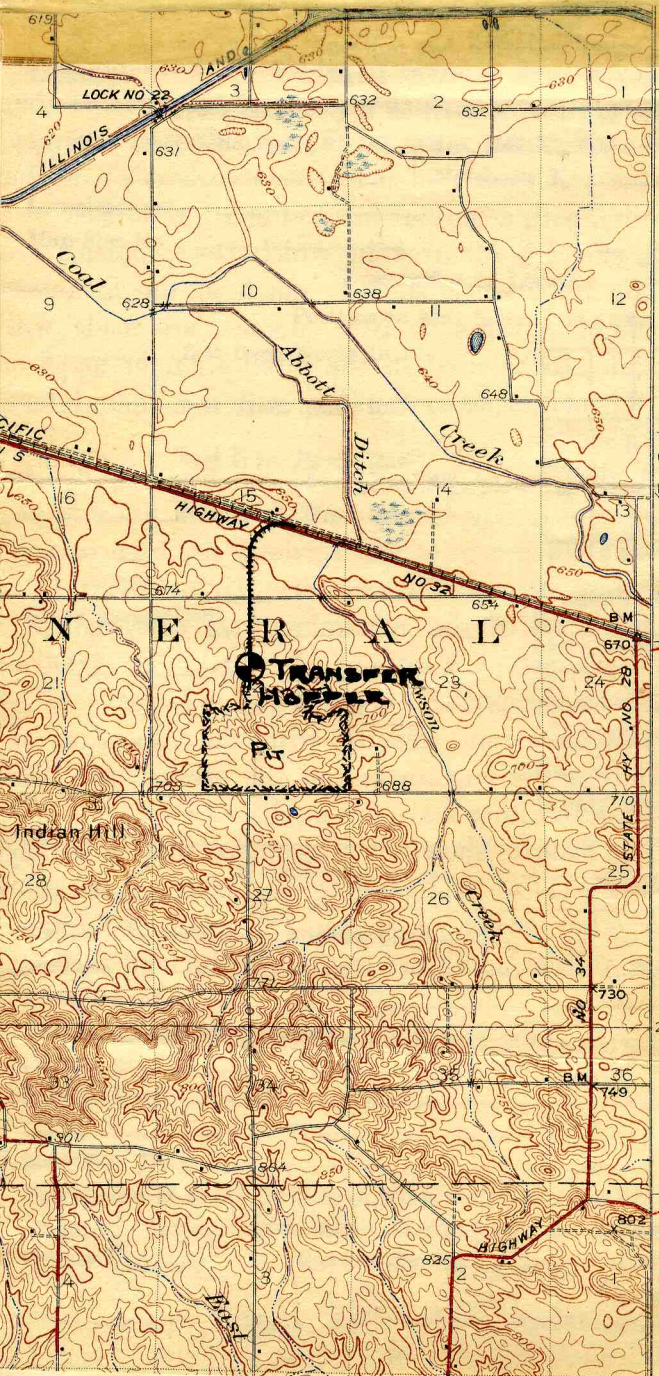
T. 16 N.

R. 6 E.

Index No.

1822

COAL MINE LOCATION AND DATA



(Buda)

T. 16 N.

SHEFFIELD 1 MI.
 WYANET 9 MI.
 PRINCETON 15 MI.

BUDDA 4 MI.

Coal is
 transferred
 to cars and
 taken to
 Athensville
 for preparation
 W.W. Wren
 Nov 29/46

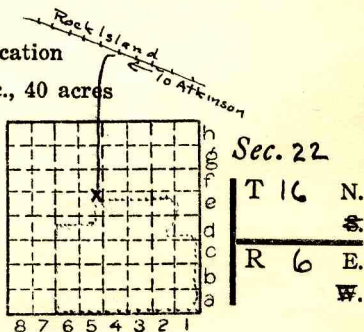
Location and Elevation Data

Location: Exact Approximate
 (Approximate only if no trace of record of original exists)
 Location by W.H. Weimer, Eng. letter Nov. 30, 1946. See accomp. map.
 Date..... Notebook No..... Page.....
 Looseleaf ref.....
 Map files No.....

Description of Location

Position in sec., 1/4 sec., 40 acres

.....feet from North line
feet from East line
feet from South line
feet from West line



Other description:.....

Farm.....
 No.....
 Company.....
Midland Electric Coal Corp
Transfer Hopper
 No.....
 County No.....

Elevation..... ft.

By.....

Method: Level, transit, alidade, hand level

Elevation of.....
 Height of point above ground.....
 Date..... Notebook..... P.....
 Looseleaf ref.....

S-11
 Map files No.....

Description of item: (drill hole, mine, etc.) Transfer hopper for strip pit
opened 1946 - Coal taken to Atkinson for preparation
 County Bureau Annawan Quadrangle Annawan Index No. 22 E5



Sampled 8 Aug 62 by Eadie and Reinertsen.

Atkinson Pit operating in area once abandoned now re-opened. Double handling overburden (106'). Drilling horizontal holes above coal to shoot high wall.

Sample

#1 650'S, 85'E, NW Cor SW 1/4 sec 30, T16N, R7E

#2 920'S, 200'E, NE Cor SW 1/4 sec 30, T16N, R7E

#3 1200'S, 760'E, NW Cor SW 1/4 sec 30, T16N, R7E

Gen'l Supt. R. K. Rank
M. in. E. Jim H. Morrow
Supt. James Mc Afee
Pit Boss - Chas. Fitch
1961- 306; 558

Strip 35' to 4' 6" coal

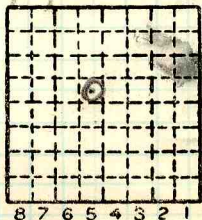
Midland Electric Coal Corp., #1 (Mecco)

#6 Coal

By _____ Date _____

Quad Annawan Part _____

County Bureau



h Sec. 22
 6 T. 16 N.
 e S.
 d R. 6 E.
 c W.
 b
 a Index No.

5-11

Co. No. _____ County BUREAU Sec. 22 T. 16N R. 6E T.&R. _____

Company MIDLAND ELEC. C.C. No. _____ Farm Mine No. 1 No. _____

Elev. _____ of _____ by _____ Total depth _____ Year op'd 1946

For M Method T Result S Type log _____ Core desc. _____

Stripped _____ Analysis _____ Confid. _____ Publ. _____

Location SE/4, SE/4, NW/4

Core logged _____ by _____

Remarks: 5-11 (SEE ACTIVE MINE BOOK) Mine Index # 681

KEY BEDS

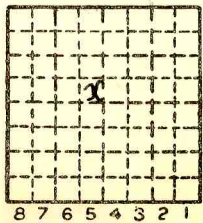
Code	Name	Depth	Thk.	Elev.
	<u>#6</u>		<u>4'6"</u>	<u>(Thk from DM+M 10'58)</u>

COMPILED BY: KLK 3-58

Correlations by _____ basis _____

Date _____ Quad. ANNAWAN

County BUREAU Co. No. 143



Sec. 22 E5

T. 16 N. _____

R. 6 E. _____

ILLINOIS GEOLOGICAL SURVEY, URBANA

Midland Electric Coal Co., # 1
Sample # 1

August 8, 1962

Westernmost Sample

650' S, 85' E, NW cor. SW $\frac{1}{4}$ Sec. 30, T. 16N, R. 7E

Collected by: G. R. Eadie
D. L. Reinertsen

4'5 $\frac{1}{2}$ " No. 6 Coal

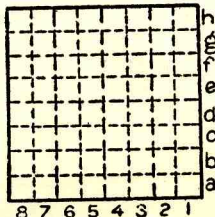
From top down:

- 0 - 14 1/8" Coal - normally bright banded, considerable calcite with some pyrite in vertical cleat, with occasional thin discontinuous fusain lenses noted.
- 14 1/8 - 14 1/2 Fusain and vitrain irregularly interbanded, fusain up to 1/16" thick, vitrain up to 1/8 " thick, somewhat pyrritized, some 6" either side the vitrain has been replaced by pyrite.
- 14 1/2 - 16 Coal - normally bright banded, some calcite on vertical cleats Infrequent thin discontinuous fusain streaks.
- 16 - 16 1/2 Coal - bright banded in part, interbanded with dull coal.
- 16 1/2 - 18 Coal - normally bright banded, calcite on vertical facings.

By GRE & DLR Date 8/8/62

Quad. Part.

County Bureau



Sec.	30
T.	16 ^{N.}
R.	7 ^{E.}
	W.

ILLINOIS GEOLOGICAL SURVEY, URBANA

Sample #1 Mecco

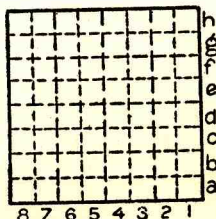
August 8, 1962

18	- 18 1/4	Coal, dull, bony, somewhat shaly.
18 1/4	- 18 5/16	Discontinuous pyrite lense.
18 5/16	- 18 1/2	Vitrain band.
18 1/2	- 18 9/16	Fusain.
18 9/16	- 28 5/8	Coal, normally bright banded, with some calcite and vertical facings, thin, discontinuous fusain streaks noted, a 3/4" pyrite lense noted in this unit 4" away from sample column.
*28 5/8	- 30	Shale, medium dark gray, fair to poor bedded, occasional plant fragment noted.
30	- 30 1/2	Coal, normally bright banded.
*30 1/2	- 32	Shale, as above, appears to be a lense.
32	- 38 7/8	Coal, normally bright banded, some calcite on vertical cleats.
38 7/8	- 39 3/8	Shale, medium dark gray, fairly poorly bedded.
39 3/8	- 46 1/8	Coal, normally bright banded, with some thin fusain streaks noted.

* Excluded from sample

By GRE & DLR Date 8/8/62

Quad.....Part.....

County Bureau

Sec.

	30	N.
T.		
	16	S.
R.	7	E.

ILLINOIS GEOLOGICAL SURVEY, URBANA

Sample #1 Mecco

August 8, 1962

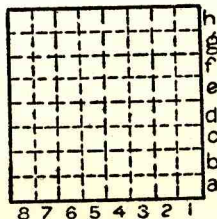
46 1/8 - 47 5/8 Coal, dull.
 47 5/8 - 53 1/2 Coal, normally bright banded,
 with several discontinuous
 thin fusain lenses noted.

Underclay - light gray, hard, firm, stigmarian.

By GRE & DLR Date 8/8/62

Quad. Part.

County Bureau



Sec. 30

T.	16	N.
		S.
R.	7	E.
		W.

Midland Electric Coal Co., # 1

~~Mecco # 1~~

8 Aug 62
GRE DLR

Sample # 1

Westernmost
650 S 85' E
A' 5 1/2' # 6

Sample
NW Cor SW 1/4 sec 30
Coal T16NR7E

From top down

Top

0-14 1/8 Coal N.B.B. Considerable calcite with some pyrite in vert. cleat with occasional thin discontinuous fusain lenses noted

14 1/8-14 1/2 Fusain + vitrain irreg. interbanded, fusain up to 1/16" thick, vitrain up to 1/8" thick, somewhat pyrolyzed, same 6" either side the vitrain has been replaced by pyrite.

14 1/2-16 Coal N.B.B. Same calcite on vert. cleats. Infrequent thin discontinuous fusain streaks

16-16 1/2 Coal, Bright banded in part, interbanded with dull coal.

16 1/2-18 Coal N.B.B., Calcite on vert. facings

Sp1 #1 Mecco 8 Aug 62

18-18¹/₄ Coal, dull, bony,
somewhat shaly,

18¹/₄-18⁵/₁₆ Discontinuous
pyrite lense.

18⁵/₁₆-18¹/₂ Vitrain band

18¹/₂-18⁹/₁₆ Fusain

18⁹/₁₆-28⁵/₈ Coal, N.B.B. with
some calcite on vert.
facings; thin, discontin-
fusain streaks noted
a ³/₄" pyrite lense noted
in this unit 4" away
from sample column,

* 28⁵/₈-30 Shale, med. dark gray,
fair to poor bedded, occ.
plant fragment noted.

30-30¹/₂ Coal N.B.B.

* 30¹/₂-32 Shale, as above, appears
to be a lense.

32-38⁷/₈ Coal N.B.B. Some Calcite
on vert. Cleat,

38⁷/₈-39³/₈ shale, med dark gray
fairly poorly bedded.

39³/₈-46¹/₈ Coal N.B.B. with some
thin fusain streaks noted.

* Excluded from sample

SP1 #1 MECCO 8 Aug 62

46 $\frac{1}{8}$ - 47 $\frac{5}{8}$ Coal, dull,

47 $\frac{5}{8}$ - 53 $\frac{1}{2}$ Coal N.B.B. with
several discontinuous
thin fusain lenses
noted.

Underclay - light gray, hard
firm, s.t.ig,



ILLINOIS GEOLOGICAL SURVEY, URBANA

Midland Electric Coal Co., #1
Sample #2
(Middle Sample)

August 8, 1962

Collected by: G. R. Eadie
D. L. Reinertsen

920' S 200' E NE cor. SW $\frac{1}{4}$ Sec. 30, T. 16 N, R. 7 E.

49" #6 Coal

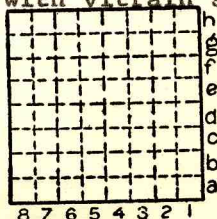
From top down

- 0 - 6 Coal, normally bright banded, some calcite on vertical facings.
- 6 - 6 $\frac{3}{16}$ Fusain.
- 6 $\frac{3}{16}$ - 8 $\frac{3}{16}$ Coal, normally bright banded, some calcite on vertical cleat, some pyrite on facings.
- 8 $\frac{3}{16}$ - 8 $\frac{5}{16}$ Fusain lense.
- 8 $\frac{5}{16}$ - 10 $\frac{7}{8}$ Coal, normally bright banded, calcite on vertical facings.
- 10 $\frac{7}{8}$ - 11 Fusain
- 11 - 11 $\frac{3}{4}$ Coal, normally bright banded, calcite on vertical facings.
- 11 $\frac{3}{4}$ - 12 $\frac{1}{2}$ Pyrittic shale, fusain, vitrain inter laminations, vitrain up to 1/8" thick.
- 12 $\frac{1}{2}$ - 13 Vitrain.
- 13 - 13 $\frac{1}{4}$ Coal, dull, somewhat bony in part.
- 13 $\frac{1}{4}$ - 15 $\frac{1}{8}$ Coal, normally bright banded, with infrequent very thin fusain streaks.
- 15 $\frac{1}{8}$ - 15 $\frac{7}{8}$ Coal, dull, with vitrain streaks.

By GRE & DLR Date 8/8/62

Quad..... Part.....

County Bureau



Sec. 30

T.	16	N.
		S.
R.	7	E.
		W.



ILLINOIS GEOLOGICAL SURVEY, URBANA

Mecco #1

Sample #2

August 8, 1962

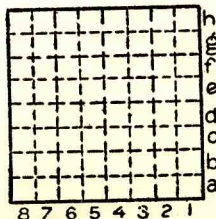
- 15 7/8 - 18 Coal, normally bright banded, calcite on vertical facings.
- 18 - 18 1/8 Fusain.
- 18 1/8 - 18 5/8 Coal, normally bright banded.
- 18 5/8 - 18 7/8 Fusain lense.
- 18 7/8 - 23 1/8 Coal, normally bright banded, some calcite on vertical facings.
- 23 1/8 - 23 1/4 Fusain lense.
- 23 1/4 - 25 9/16 Coal, normally bright banded, calcite and some pyritican vertical facings.
- 25 9/16 - 26 13/16 Pyrite lense.
- 25 3/16 - 26 5/8 Coal, normally bright banded.
- *26 5/8 - 29 ^{↑ 20'} Shale, medium gray, fair to poor bedding, plant debris.
- 29 - 36 5/8 Coal, normally bright banded, with considerable calcite on vertical facing, some pyrite, occasional thin fusain streak noted.
- *36 5/8 - 38 ^{4'} Shale, gray to medium dark gray, harder than shale above, scattered plant debris, slightly silty, hard, thickness varies to 3/8" within 1-2 ft. either side of sample, but seems to be fairly consistent.

* Excluded from sample.

By..... GRE & DLR Date. 8/8/62

Quad..... Part.....

County..... Bureau.....



Sec. 30

T.	16	N.
		S.
R.	7	E.
		W.



ILLINOIS GEOLOGICAL SURVEY, URBANA

Mecco #1 Sample #2

August 8, 1962

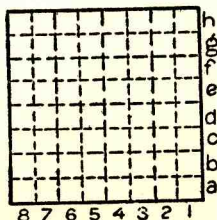
- 38 - 41 Coal, normally bright banded, calcite on vertical facings.
- 41 - 41 3/16 Coal, very bony, grades laterally into pyrite lense up to 40 5/8" in thickness.
- 41 3/16 - 43 3/8 Coal, normally bright banded, some calcite on vertical facings.
- 43 3/8 - 43 3/4 Coal, dull.
- 43 3/4 - 49 Coal, normally bright banded.

Underclay, light medium gray, stigmarian, damp, somewhat plastic, very hard and firm where dry.

By..... GRE & DLR Date. 8/8/62

Quad..... Part.....

County..... Bureau



Sec. 30

T.	16	N.
		S.
R.	7	E.
		W.

Midland Electric Coal Co, #1

~~MECCO #1~~

8 Aug 62

GRE DLR

Spl #2

(middle spl.)

920' S

200' E

NE cor SW 1/4 Sec 30

49"

#6

Coal

T16 NR 7E

Top
0-6

Down

Coal N.B.B., some calcite
on vert. facings

6-6³/₁₆

Fusain

6³/₁₆-8³/₁₆

Coal N.B.B., some calcite on
vert. cleat, some pyrite
on facings

8³/₁₆-8⁵/₁₆

Fusain lease

8⁵/₁₆-10⁷/₈

Coal N.B.B., Calcite on
vert facings

10⁷/₈-11

Fusain

11-11³/₄

Coal N.B.B., Calcite on vert
facings

11³/₄-12¹/₂

Pyritic sh., fusain, vitrain
interlamination, vitrain
up to 1/8" thick

12¹/₂-13

Vitrain

13-13¹/₄

Coal, dull, somewhat lamy
in part.

13¹/₄-15¹/₈

Coal N.B.B. with infreq.
very thin fusain streaks

15¹/₈-15⁷/₈

Coal dull with vitrain
streaks

MECCO #1 Spl #2 8th 62

15⁷/₈ - 18 Coal NBB, Calcite on
vert facings

18 - 18¹/₈ Fusain

18¹/₈ - 18⁵/₈ Coal NBB

18⁵/₈ - 18⁷/₈ Fusain lense

18⁷/₈ - 23¹/₈ Coal NBB, some calcite
on vert facings

23¹/₈ - 23¹/₄ Fusain lense

23¹/₄ - 25⁹/₁₆ Coal NBB, Calcite and some
pyrite on vert. facings

25⁹/₁₆ - 25¹³/₁₆ Pyrite lense

25¹³/₁₆ - 26⁵/₈ Coal NBB

* 26⁵/₈ - 29 Shale - med. gray
fair to poor bedding
plant debris

29 - 36⁵/₈ Coal NBB with consider-
able calcite on vert
facings, some pyrite,
occasional thin Fusain
streak noted.

* 36⁵/₈ - 38 Shale, gray to med dk.
gray, harder than shale
above, scattered plant
debris, slightly silty,
hard, thickness varies to
3/8" within 1-2 ft. either
side of Spl, but seems to

* Excluded from sample

MECCO #1 Spl #2 8A0962

be fairly consistent

38-41 Coal N.B.B., Calcite on
vent. facings

41-41³/₁₆ Coal, very fine grades
laterally into pyrite
lense up to 5/8" in thick-
ness,

41³/₁₆-43³/₈ Coal N.B.B., same Calcite
on vent. facings

43³/₈-43³/₄ Coal, dull

43³/₄-49 Coal N.B.B.

Underlay - Lt. med. gray
stiq. damp, somewhat
plastic, very hard and
firm when dry.



ILLINOIS GEOLOGICAL SURVEY, URBANA

Midland Electric Coal Co., #1
Sample #3

August 8, 1962

1200' S 760' E NW cor. SW $\frac{1}{4}$ Sec. 30, T. 16 N., R. 7 E.

Collected by: G. R. Eadie
D. L. Reinertsen

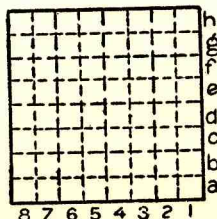
52 $\frac{1}{2}$ " #6 Coal

4914

From top down

- 0 - 1 1/4 Coal, normally bright banded, calcite on vertical facings.
- 1 1/4 - 1 5/16 Pyrite lense.
- 1 5/16 - 14 1/4 Coal, normally bright banded, considerable calcite on vertical cleat and some pyrite.
- 14 1/4 - 14 5/16 Fusain.
- 14 5/16 - 14 5/8 Vitrain
- 14 5/8 - 14 3/4 Fusain lense.
- 14 3/4 - 16 7/8 Coal, normally bright banded, calcite, some pyrite on vertical cleat.
- 16 7/8 - 17 5/8 Very bony, pyritic coal, inter-laminated with dull coal and vitrain up to 3/16" thick.
- 17 5/8 - 18 1/4 Coal, normally bright banded, calcite on vertical facings, fusain parting at base.
- 18 1/4 - 20 Coal, normally bright banded, calcareous on vertical facings.

By GRE & DLR Date 8/8/62
 Quad..... Part.....
 County Bureau



Sec. 30
 T. 16 N.
 S.
 R. 7 E.
 W.



ILLINOIS GEOLOGICAL SURVEY, URBANA

Mecco #1, Sample #3

August 8, 1962

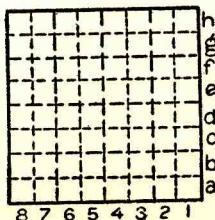
- 20 - 20 1/8 Pyrite lense grades laterally to 1/2" shale lense.
- 20 1/8 - 27 Coal, normally bright banded with considerable calcite on vertical facings and 2 1/32" + pyrite streaks near bottom 1/3.
- 27 27 3/16 Fusain streak, irregular thickness 1/8 to 1/4" or more along face.
- 27 3/16 - 29 3/4 Coal, normally bright banded, calcite on vertical facings.
- 5/8 *29 3/4 - 31 1/8 Shale, medium olive gray, fair to poorly bedded, fairly weak, considerable plant debris.
- 31 1/8 - 39 5/8 Coal, normally bright banded, calcareous on vertical facings, several thin discontinuous fusain streaks noted.
- ? *39 5/8 - 40 Pyrite lense, variable thickness to 1 1/2".
- 40 41 Fusain, lense partially pyrritized.
- 41 - 43 1/2 Fusain, very soft
- 43 1/2 - 45 1/2 Coal, normally bright banded, some calcite on vertical facings.

* Excluded from sample.

By GRE & DLR Date 8/8/62

Quad. Part.

County Bureau



Sec. 30	
T. 16	N.
	S.
R. 7	E.
	W.



ILLINOIS GEOLOGICAL SURVEY, URBANA

Mecco #1 Sample #3

August 8, 1962

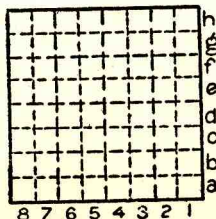
- 45 1/2 - 45 7/8 Shale, dark gray to black, pyritic, bony.
- 45 7/8 - 52 1/2 Coal, normally bright banded, calcite on vertical facings and pyrite on vertical facings in bottom 1".

Underclay, stigmarian, medium gray, firm. Somewhat plastic when wet.

By..... **GRE & DLR** Date..... **8/8/62**

Quad..... Part.....

County..... **Bureau**



Sec. 30	
T. 16	N.
	S.
R. 7	E.
	W.

M. E. COO #1 Sp1 #3 8 Aug 62

20-20⁷/₈ Pyrite lense grades laterally to 1/2" sh lense

20⁷/₈-27 Coal NBBB with considerable calc. on vert facings and 2 1/32" ± pyrite streaks near bottom 1/3

27-27³/₁₆ Fusain streak irreg. thickness 1/8 to 1/4" or more along face.

27³/₁₆-29³/₄ Coal NBB, Calc. on vert facings

* 29³/₄-31⁷/₈ Sh. - med olive gray fair to poorly bedded fairly weak, considerable plant debris

31⁷/₈-39⁵/₈ Coal NBB, Calc. on vert facings, several thin, discontinuous fusain streaks noted,

* 39⁵/₈-40 Pyrite lense, variable thickness to 1 1/2"

40-41 Fusain, lense partially pyrrhotized

41-43¹/₂ Fusain, very soft

43¹/₂-45¹/₂ Coal NBB Same calc on vert. facings

* Excluded from Sample

MECCO #1 SPI #3 8Aug62

45 $\frac{1}{2}$ - 45 $\frac{7}{8}$ Sh, dk gray to
black, pyritic, bony

45 $\frac{7}{8}$ - 52 $\frac{1}{2}$ COAL NBB Calc
on vert. facings and
pyrite on vert. facings
in bottom 1"

Under clay, Stiq., med
gray, firm. somewhat
plastic when wet.

Midland Electric Coal Co., #1

~~MECCO #1~~ Spl #3 8 Aug 62

Spl #3

GRE DLR

1200'S 760'E NW cor SW 1/4 Sec 30

T16N

R7E

52 1/2" #6 Coal 4 PM

Top - Down

0 - 1 1/4 Coal NBB, Calcite on vert
facings

1/4 - 1 5/16 Pyrite lense

1 5/16 - 1 1/4 Coal NBB, considerable
calcite on vert. cleat &
some pyrite

1 1/4 - 1 4 5/16 Fusain

1 4 5/16 - 1 4 5/8 Vitrain

1 4 5/8 - 1 4 3/4 Fusain lense

1 4 3/4 - 1 6 7/8 Coal NBB, Calcite, some
pyrite on vert cleat

1 6 7/8 - 1 7 5/8 ^{very} Bony, pyritic coal,
interlaminated with
dull coal & vitrain up
to 3/16" thick.

1 7 5/8 - 1 8 1/4 Coal NBB, Calcite on vert
facings, fusain parting
at base.

1 8 1/4 - 20 Coal NBB, Calc. on vert
facings