



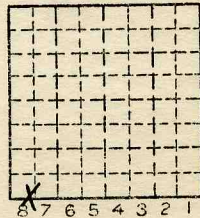
Location and Elevation Data

Location: Exact Approximate
(Approximate only if no trace of record of original exists)
Location by Abd Mines Book
Date Notebook No. Page
Looseleaf ref.
Map files No.

Description of Location

Position in sec., 1/4 sec., 40 acres

feet from North line
feet from East line
feet from South line
feet from West line



Sec. 34
T 19 N.
R 8.
W.

Other description:
Farm
No.
Company Nelson & Son
No.
County No. 504

Elevation ft.
By
Method: Level, transit, alidade, hand level

Elevation of
Height of point above ground
Date Notebook P.
Looseleaf ref.

Map files No.
Description of item: (drill hole, mine, etc.) Slope (NOT USED) ADD

County VERMILION Quadrangle 149 Index No. 1734 AB



Mine originally operated by: (1)

Nelson & Son.

Date

Original name or number:

Slope

Illinois Coal Report

p.

LATER OPERATORS

Date	Operator	Name or No.
2		
3		
4		
5		
6		
7		
8		
9		
10		
11		
12		
13		
14		

• Also owners

#See ownership sheet

Railroad, Wagon, Idle, Abandoned

LOCAL MINE IDENTIFICATION

County No.

Coal No.

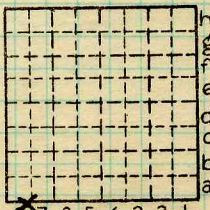


Part

Quad.

County

VERMILION.



Sec. 34

T. 19 N. S.

R. 11 E. W.

Index No.

COAL MINE OPERATOR

COUNTY NO.

604

1734A8