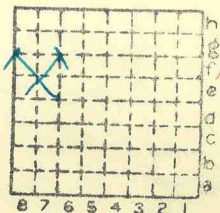


ISGS Index No. 4025

Pumack Coal Co

L 82

1615



Sec.	9
T.	9 ^{W.} S.
R.	2 ^{E.} W.
Index No.	





Mine originally operated by: (1) Pinnacle Coal Co.

Date 1936 L-82

Original name or number: McCluskey Mine
Illinois Coal Report 1936 p.

LATER OPERATORS

Date	Operator	Name or No.
2		
3		
4		
5		
6		
7		
8		
9		
10		
11		
12		
13		
14		

* Also owners #See ownership sheet

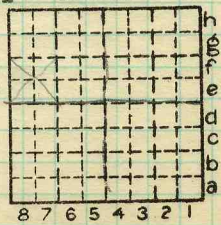
Railroad, Wagon, Idle, Abandoned Slope Mine
'38

IDENTIFICATION

County No. Coal No. 5

Quad. W. Frankfort Part

County Williamson



Sec. 9
 T. 9 S.
 R. 2 E.
 W.
 Index No.
 0609

COAL MINE OPERATOR
LOCAL MINE