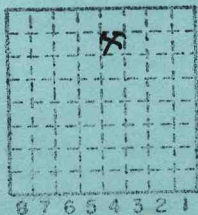


Strip mine near Walnut
Grove Church operated
by Jewell Sisk

SSBS # 4193



Sec. 9
T. 10 S.
R. 6 E.
Index No. 1

SALINE COUNTY

FIELD NOTES
Illinois State Geological Survey

.5g

February 4, 1964

Geologic section measured in highwall of a small strip mine near Walnut Grove Church, operated by Jewell Sisk.

Samples collected for spore studies.

Information regarding ownership and production.

Soil

Sandstone, gray, weathered brown, massive, not examined in detail, upper 3'± is horizontally bedded with beds about 1-3" thick.

6'0"±
2'6"

Shale, olive brown, silty, weathered.

Shale, light gray, moderately hard, fissile, more silty than above. Grades downward into

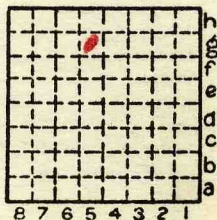
3'0"

Shale, medium light gray, smooth, rather soft, no invertebrate fossils or plant remains were seen on rather careful examination. Contains a few small siderite nodules.

2'6"

Coal, (2A), normally bright banded, divided into four benches as follows for collecting samples to be added to spore sample collections

6 1/2"	soft
7 1/2"	massive block
7"	coal, normally bright banded, bony band at base.
<u>11"</u>	lower.
32"	total



By W.H. Smith and M.E. Hopkins Date 2-4-64

Quadrangle Harrisburg

County Saline Sec. 9 T. 10S R. 6E

FIELD NOTES
Illinois State Geological Survey

p. 2.

Notes regarding this mine:

The pit is a small strip now recently abandoned from which approximately 60 carloads of coal was reportedly loaded out.

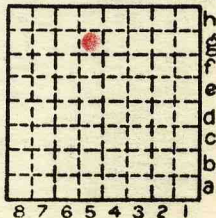
Mr. Cozart, of Carrier Mills, who is familiar with the drilling connected with the Saxton Coal Company Walnut Grove Mine in the Davis and DeKoven coals just south of this pit, said the interval from this coal to the DeKoven was about 110 feet. This small pit is about 2000' north of the highwall of the Walnut Grove Mine.

Mr. Cozart said this operation was unsuccessful because of the high ash and moisture in the coal. He gave information on two analyses from this 32" coal as follows.

Sample 1.	ash	16.78
	moisture	8.5
	sulfur	4.5
	BTU	11,126

Sample 2.	ash	14.46
	moisture	8.5
	sulfur	4.5
	BTU	10.690

Several pictures of the highwall and coal in the small pit were taken. This outcrop and samples are of particular interest because so far as I (W.H.S.) know this is the only place where this 2A coal has been mined anywhere in Illinois.



By W.H. Smith & M.E. Hopkins Date 2-4-64

Quadrangle Harrisburg

County Saline

Sec. 9 T. 10S R. 6E