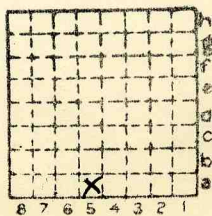




Form 180

BLUE EAGLE

L-17



Sec. 13

T. 31 ~~5~~ N.

R. 3 ~~W.~~ E.

Index No.

✓ Mine Index 2580



Mine originally operated by: (1)

Date 1933 L-17

BLUE EAGLE STREATOR

Original name or number: Local

Illinois Coal Report

p.

LATER OPERATORS

Date	Operator	Name or No.
2		J.C. Quade
3		
4		
5		
6		
7		
8		
9		
10		
11		
12		
13		
14		

* Also owners

See ownership sheet

Railroad, Wagon, Idle, Abandoned

Shaft

LOCAL MINE

IDENTIFICATION

L-17

County No.

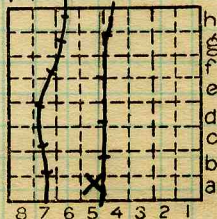
Coal No. 7

Quad. 80

Part 6

County

LA SALLE



Sec. 13

T. 31 N.

R. 3 E.

Index No.

2813 A5

COAL MINE OPERATOR



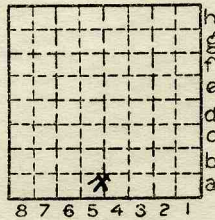
Location and Elevation Data

Location: Exact Approximate
(Approximate only if no trace of record of original exists)
Location by: Dept Mines & Minerals
Date..... Notebook No..... Page.....
Looseleaf ref.....
Map files No.....

Description of Location

Position in sec., 1/4 sec., 40 acres

.....feet from North line
.....feet from East line
400 feet from South line
2640 feet from West line



Sec. 13
T 31 N.
R 3 E.
W.

Other description: L-17

Farm.....
No.....
Company: Blue Eagle Coal Company
No.....
County No.....

late 1941, 1942

Prod 1940 536

Elevation.....ft.

By.....

Method: Level, transit, alidade, hand level

Elevation of.....
Height of point above ground.....
Date..... Notebook..... P.....
Looseleaf ref.....

Map files No.....

Description of item: (drill hole, mine, etc.) Shaft

6.5' to 4.6" of #7 coal
63'

LOCAL MINE

County..... Quadrangle..... Index No.....

28294-5M-5-5-37

La Salle

Streator

281 A5