

Illinois State Geological Survey

.7fg .67g

(0636.17 and .28) H.R.W.

August 21, 1930

Two small ravines s. of Rocky Cr. ravine with clay pit show poorly.

Section of sh. over coal #7 with abundant larger ironstone concr. which form bulk of float in these creeks.

.67g

(0636.28) H.R.W.

Eastern most of these ravines shows in lower part

Slate, blk. fissile with conodonts 3'

Sh. dk. gray soft 9"

Coal 6"

Dk. gray clay 1/2"

Coal 11"

Underclay only top exposed.

(0636) J.M.W.

1927

NW/4 section 36.

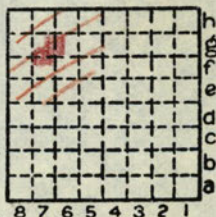
Two coal mines are located along creek bottom.

One old and other new. Few fossils from old one west of road.

Limestone (Rock Creek) outcrops along road on south side of hollow. Also caps the hill at Old (New?) Salem State Park 1/2 mile north.

Limestone underlain by micaceous gray shale well exposed in shale pit just north in section 25.

Weller's Menard County fossil collection #2.



By H. R. Wanless Date 1930, 27

J.M.Weller

Quadrangle Tallula

County Menard Sec. 36 T. 18N R. 7W

FIELD NOTES

Illinois State Geological Survey

(0636)

1927

NW/4 section 36. Small coal mine dump--east side
of state highway.

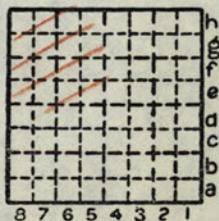
Fragments of fusulina limestone said to be
12' thick. Probably cap of No. 6.

Weller's Menard County fossil collection #5.

By J. M. Weller Date 1927

Quadrangle Tallula

County Menard Sec. 36 T 18N R 7W



FIELD NOTES

Illinois State Geological Survey

(0625)

September 19, 1938

Vicinity of New Salem Park.

CCC boys are excavating point of hill below park and just north of old mill site.

Wanless reports Coal No. 6 exposed at edge of river at low water. I saw coal fragments below alluvium at south end of bank but they appear to have slumped from higher position. I dug for coal at water's edge a little farther north but did not reach it. Shale was dark gray but not black or at all slaty.

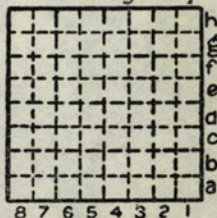
Earthy ocherous weathering limestone occurs in the bank and covers the slope with nodules. It contains good specimens of *Dictyoclostus* and other fossils. This is probably Herrin limestone.

Below it the shale contains a few reddish streaks. A little above the limestone is a thin coal horizon which may be Jamestown.

Coal No. 7 does not show here and is probably at about the level of the pavement.

Above the pavement is a considerable thickness of gray Farmington shale. In its lower part is a thin layer of hard intensely black shale that may show horizon of Bankston coal of Southern Illinois. Fragments of this shale were seen south along the brushy hillside south of the mill site where it has weathered out. Farmington shale is overlain by drift containing blocks of Lonsdale limestone. Farther south at entrance to part where highway goes up hollow tributary to the

(cont. next page)

By J. M. Weller Date 1938Quadrangle TallulaCounty Menard Sec. 25 T 18N R 7W

FIELD NOTES

Illinois State Geological Survey

p.2
(0625) cont.

Sangamon, there is a coal mine to No. 5, 58' deep. NE of mine is pit in Farmington shale with large vertical face. Coal No. 7 is just below floor of pit and shows at one place 1' or more thick in small gully.

By J. M. Weller Date 1938

Quadrangle Tallula

County Menard Sec. 25 T 18N R 7W

