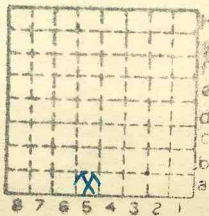


Centerville Mt Eg Co

839

MF 3961



Sec. 34

T. 8 N. S.

R. 1 E. W.

Index No.



Mine originally operated by: (1) Carterville Mg. & Eg. Co.

Date 1934

Original name or number:

Illinois Coal Report 1934 p. 254

LATER OPERATORS

Date	Operator	Name or No.
2		
3		
4		
5		
6		
7		
8		
9		
10		
11		
12		
13		
14		

* Also owners

#See ownership sheet

Railroad, Wagon, Idle, Abandoned strip

I.C.

IDENTIFICATION

County No.

839

Coal No.

6

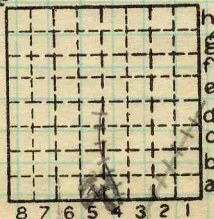
Quad.

Herrin

Part

County

Williamson



Sec. 34

T. 8

N. S.

R. 1

E. W.

Index No.

0434-a-5

COAL MINE OPERATOR



(Sheets)

COAL PRODUCTION

(Sheet)

No.	Period						Tons	
	Mo.	Day	Year	Mo.	Day	Year		
	1	1	1934	12	31	1934	3	513
	1	1	1935	12	31	1935	12	384
2	1	1	1936	12	31	1936	38	317
2	1	1	1937	12	31	1937	8	187

SUMMARIES

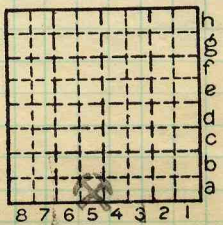
No.	to	No.	Tons
		1934	3513

Railroad, Wagon, Idle, Abandoned **strip**

IDENTIFICATION

County No. 839 Coal No. 6

Quad. **Herrin** Part
County **Williamson**



Sec. 34

T. 8
R. 1

Index No. 0434-a-5



LOCATION AND ELEVATION

Location: side R. R.
side R. R.
side Highway No.

on top. map Location sheet

Elevation: Method, 1. Est. () ft.
2. Inst. (kind) ft.

By Data sheet

DEPTH

Authority To coal 30 ft.
Authority Rail to rail ft.
Top of coal above rail. (Est. Rule) ft.
To coal ft.

ALTITUDE OF TOP OF COAL

By estimated data
By instrumental data ft.

Thickness

Max. in. Min. in. Aver. 120 in.

GEOLOGICAL DATA 96

Mine notes, date None

Coop No. Pyr. inv. Coal Ash inv.

CHEMICAL DATA

Analyses Face U. I. B. M. Others
Car U. I. B. M. Others
Org. Sulf U. I. B. M. Others
Ash fusion U. I. B. M. Others
Ash anal. U. I. B. M. Others
U. I. B. M. Others

Classification

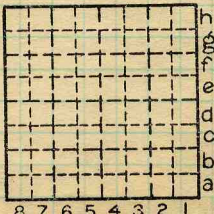
Misc. tests: Coking. Cleaning Boiler

Published descriptions:—

Railroad, Wagon, Idle, Abandoned Strip

IDENTIFICATION

County No. 839 Coal No. 6
Quad. Herrin Part
County Williamson



Sec. 34

T. 8 S.
R. 1 E.

Index No. 0434 a5

COAL MINE LOCATION AND DATA

Location and Elevation Data

Location: Exact Approximate
(Approximate only if no trace of record of original exists)

Location by Dept M + M Film

Date Notebook No Page

Looseleaf ref.

Map files No.

Description of Location

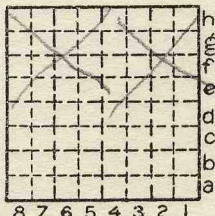
Position in sec., 1/4 sec., 40 acres

feet from North line

feet from East line

feet from South line

feet from West line



Other description: N E N W

Farm

No.

Company Carterville

No.

County No. 839

Elevation ft.

By

Method: Level, transit, alidade, hand level

Elevation of

Height of point above ground

Date Notebook P

Looseleaf ref.

Map files No.

Description of item: (drill hole, mine, etc.)

County

Quadrangle

Index No.

Williamson