

Illinois State Geological Survey

^{.3bc}
 (0326.62) H.R.W. See map no. 4107 d5.1-195 Sh.42

August 21, 1933.

Railroad cut on C. & E. I. R. R.

Massive glistening quartzose sandstone, with a few quartz pebbles dipping very gently north. Upper Conglomerate of Caseyville or Makanda sandstone of Lamar. 10' seen.

^{.1e .2f}
 (0326.95 - .86 1/2) M.W.F.

See map no. 4107 d5.1-195 Sh.42

August 23, 1933.

Section in tributary to main tributary to Dutchmans Creek

Sandstone, outcropping near crest of hill west of abandoned mine, light gray, hard, rather coarse grained, massive (Upper conglomerate)

Concealed by talus on hill slope 30-40'

Shale, light gray, silty to sandy, thin bedded a short distance above coal 10'

Old abandoned mine; entry caved in. Coal not exposed; coal in dump is of a bony to shaly type. Farmer reports coal to have been about 1'6" thick when mined.

Concealed 50-60'

Sandstone, hard, massive, light gray, glistening 30'

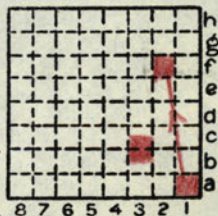
Concealed 25'

Sandstone, thin bedded, light gray 1-2' seen.

By H.B. Wanless, M.W. Fuller Date 1933

Quadrangle Marion

County Johnson Sec. 26 T. 11S R. 2E



FIELD NOTES

Illinois State Geological Survey

July 6, 1954.

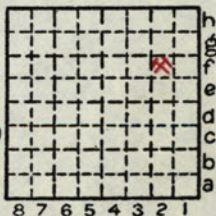
- 2f Abandoned drift in S. creek bank N. of house.
Dip of sandstone apparently flat - depth not too great for stripping.

(0326) J.M.W.

October 22, 1939

1. Top Upper conglomerate in lane south side of ridge. 120' below top of ridge.

By H.B. Stonehouse Date 1954, 1939
J.M. Weller
 Quadrangle Marion



County Johnson Sec. 26 T 11S R 2E