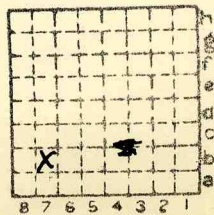




Form 180

WILLIAM BROOKER
Co. No. 249
L-45



Sec. 8

T. 32 N. 2

R. 2 E. 1

Index No.

✓ Mine index 2653



Mine originally operated by: (1) **William Brooker**

Date
1936 L-45

Original name or number:
Illinois Coal Report **1936** p.

LATER OPERATORS

Date	Operator	Name or No.
2 1937	Brooker Bros	
3 1		
4		
5 1941	Wm Brooker	
6 active 1942		
7		
8		
9		
10		
11		
12		
13		
14		

* Also owners

#See ownership sheet

Railroad, Wagon, Idle, Abandoned

Drift Mine

IDENTIFICATION **L-45**

County No. **249 (1950)**

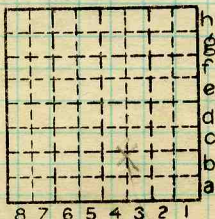
Coal No. **2**



Quad. **Toluca (79)**

Part

County **La Salle**



Sec. **8**

T. **32 N.**

R. **2 E.**

Index No.

2408 87

COAL MINE OPERATOR



Location and Elevation Data

Location: Exact Approximate

(Approximate only if no trace of record of original exists)

Location by Dept Mines & Minerals

Date..... Notebook No..... Page.....

Looseleaf ref.....

Map files No.....

Description of Location

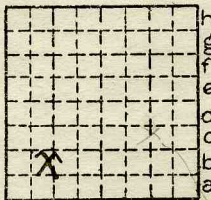
Position in sec., 1/4 sec., 40 acres

.....feet from North line

.....feet from East line

.....feet from South line

.....feet from West line



Sec. 8
T 32N.
R 2E.
W

1940

Other description: E6, 1939

L-45

Farm.....

No.....

Company William Brooker

No. #2

County No.....

Elevation.....ft.

By.....

Method: Level, transit, alidade, hand level

Elevation of.....

Height of point above ground.....

Date..... Notebook..... P.....

Looseleaf ref.....

Map files No.....

Description of item: (drill hole, mine, etc.) Drift

25' to 3' 4" of #2 level

LOCAL MINE

County Quadrangle

Index No.

28294-5M-5-5-37

La Salle

Jolusa (79)

2408B7