

2083

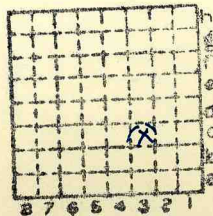


Form 180

Boston CC

L6

141.



Sec. 26

T.	3	N.
R.	8	W.

Index No.



Mine originally operated by: (1) *Illinois Hydraulic Pressed Brick Co*
 Date *1908 L-6*

Original name or number:
 Illinois Coal Report *d.*

LATER OPERATORS

Date	Operator	Name or No.
<i>2 1909-11</i>	<i>Independent Coal Co.</i>	<i>—</i>
<i>3</i>	<i>Buxton Coal Co.</i>	
<i>4 1912-17</i>	<i>Hydraulic Press Brick</i>	
<i>1918-20</i>	<i>Independent C C</i>	
<i>5 1921-31</i>	<i>Hydraulic Press Brick</i>	
<i>6 1933-38</i>	<i>Buxton C C</i>	
<i>7</i>		
<i>8</i>		
<i>9</i>		
<i>10</i>		
<i>11</i>		
<i>12</i>		
<i>13</i>		
<i>14</i>		

* Also owners #See ownership sheet

~~Railroad~~ Wagon, Idle, Abandoned Shaft Mine

LOCAL MINE

IDENTIFICATION

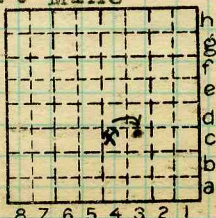
County No. *141*

Coal No. *6*

Quad. *Belleville (226)*

Part *3*

County *Madison*



Sec. *26*

T. *3*

R. *8*

Index No.

COAL MINE OPERATOR

1826
3C



(Sheets)

COAL PRODUCTION

(Sheet)

Period						Tons
Mo.	Day	Year	Mo.	Day	Year	

SUMMARIES

No.	to	No.

Railroad, Wagon, Idle, Abandoned
IDENTIFICATION

County No. 141 Coal No. 6

Quad. 226 Part

County Madison

Sec. 26
 T. 3 N.
 S. —
 R. 8 E.
 W. —
 Index No.

COAL MINE—PRODUCTION

1826.e3



LOCATION AND ELEVATION

Location: J.C. Quade side R. R.
field notes N^{side} Pennsylvania R. R.
 side Highway No.

on top. map Yes Location sheet

Elevation: Method, 1. Est. (_____) _____ ft.
 2. Inst. (kind PT) 515.2 ft.
 By EFT. 13-87-42d Data sheet

DEPTH

Authority J.C. Quade field notes To coal 180 ft.
 Authority _____ Rail to rail _____ ft.
 _____ Top of coal above rail. (Est. Rule) _____ ft.
EFT To coal 196.6 ft.

ALTITUDE OF TOP OF COAL

By estimated data _____
 By instrumental data _____

318.7 ft.

Thickness
 Max. 92 in. Min. _____ in. Aver. 90 in.

GEOLOGICAL DATA

Mine notes, date _____

 Coop No. _____ Pyr. inv. _____ Coal Ash inv. _____

CHEMICAL DATA

Analyses Face	U. I.	B. M.	Others
Car	U. I.	B. M.	Others
Org. Sulf	U. I.	B. M.	Others
Ash fusion	U. I.	B. M.	Others
Ash anal.	U. I.	B. M.	Others
	U. I.	B. M.	Others

Classification

Misc. tests: Coking. _____ Cleaning _____ Boiler _____

Published descriptions:— None

~~Railroad~~, Wagon, Idle, ~~Abandoned~~

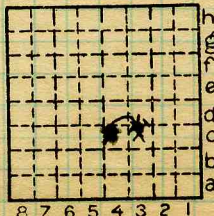
IDENTIFICATION

County No. 141

Coal No. 6


 Part 3

Quad. Bellerille (226)
 County Madison



Sec. 26

T. 3 N.

R. 8 W.

Index No.

1826.32

C-3
 L

COAL MINE LOCATION AND DATA