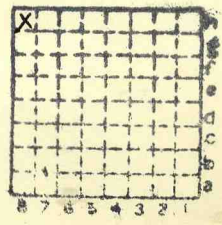




Form 180

ISGS Mine Index #3320
HARRISBURG C. Mg. C. #2

1888



Sec 6
T. N.
10 S.
R. 6 E.
W.
Index No.
1888 148





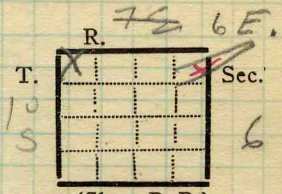
Town, *Ledford Sh. P.*
 Local Authority, *P.O. Harrisburg*

Surface alt., *380* ft.
 Depth to coal, *Strip* ft.
 Alt. top coal, *Strip* ft.
 Thickness: Av. *84* in.
 Max. in., Min. in.

Level: Auth.,

Method, *Strip*

R. R., *CCC + Sh. L.*



Location: authority, *Adjoins No. 4 on the SW.*

(Show R. R.)

Operator

H8

Mine Name or No.

19 *Harrisburg Coal Min. Co. Ledford Strip*
Harrisburg #2

Successor to
Date

Succeeded by
Date

Worked out

Succeeded by
Date

PRODUCTION.

							U. S. No.
19		<i>2000</i>	<i>av. daily</i>				
<i>1927</i>		<i>81</i>	<i>209</i>				

Geol. Notes? *yes*
 Analyses No.

Coop. No.

Coal secs?

28

Examined by

Ref.

Coal bed name: Local *#5*
 County *Saline*

Survey No.

Index No. *1106.98*

K.—ACTIVE SHIPPING OR LOCAL COAL MINE.



(Sheets) COAL PRODUCTION (Sheet)

Period						Tons	
Mo.	Day	Year	Mo.	Day	Year		
7	1	1923	6	30	1924	216	978
7	1	1924	6	30	1924	224	255
7	1	1925	12	31	1925	125	402
1	1	1926	12	31	1926	200	279
1	1	1927	12	31	1927	81	209
1	1	1928	12	31	1928		0
						848	123

Harrisburg C Mg Co #2

SUMMARIES					
No.	to	No.			
	Total			848	123

Railroad, Wagon, Strip, Idle, Abandoned 1928

Sec. 6

IDENTIFICATION

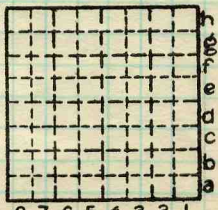
County No. _____

Coal No. _____

Coal Report No. _____

Quad. Harrisburg

County Saline



T. 10 S.
R. 6 E.

Index No.

1106 H8

COAL MINE—PRODUCTION

ILLINOIS GEOLOGICAL SURVEY, URBANA

