



208

FORM 180

R F

SPRINGFIELD

Saline County C. Corp., # 6 - 46

(Peabody 46.)

560

mi. # 49, BM 8

Sec. 34



T. 8 N. S.

R. 7 E. W.

Index No.

✓ Mine Index

Mine originally operated by: (1)

Date

National Mng. Co.

1906

Original name or number: #1

Illinois Coal Report p.

LATER OPERATORS

Date	Operator	Name or No.
2 1908	Harrisburg So. C. C.	#1
	<i>idle 1910</i>	
3 1913	Big Creek C. C.	#1
4 1914	Saline County C. Co.	#6
5 1920	Big Creek C. C., Inc.	#6
	<i>idly 1922</i>	
6 1924	Saline County C. Corp.	#6
	<i>idly 1925 + after 1927.</i>	
7 1928	Saline County C. Corp.	#46
8 1929	Peabody C. C.	#46
9	<i>idle after 1927. Peabody bought the mine but never operated it.</i>	
10	<i>J.D., 1957</i>	
11		
12		
13		
14	<i>Mine Index # 49 - BMS</i>	

\*Also owners

#See ownership sheet

Railroad, Wagon, Strip, Idle, Abandoned

1928? Shaft

IDENTIFICATION

County No. 560

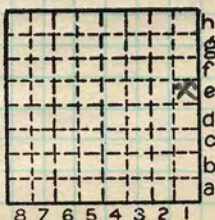
Coal No.

Coal Report No. \_\_\_\_\_

5

Quad.

County Saline



Sec. 34

T. 8 S.

R. 7 E.

Index No.

0634 E1

COAL MINE OPERATOR





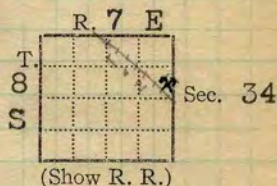
Town, Grayson  
Local Authority,

Surface alt., 406.6 ft.  
Depth to coal, 332 ft.  
Alt. top coal, 74.6 ft.  
Thickness: Av. 66 in.  
Max. 74 in., Min. 54 in.

Level: Auth., Kay; Coop notes

Method, H.L.?

R. R., L & N CCC + S. L.



Location: authority, Kay; O'Gara map

**Dike**

Operator

Mine Name or No.

National M... Co.

1902 Harroburg Southern Coal Co

1914 Saline County Coal Co

No. 6  
(Nigger Hill)

Successor to Big Creek Coal Co

No. 11

Date 1914

Succeeded by Big Creek Coals, Inc.

Date May 1, '20 - Announced by Co

Succeeded by Saline Co. Coal Corp. #6

Date 1925 (Coal Catalog)

307 N. Michigan Ave, Chicago

PRODUCTION.

#46

Peabody Coal Co. #46

Fiscal

U.S. No.

1915

177 285

1925 1500 daily

1926 2000 tons daily

1925-26 Idle (Klept. of mines)

12-30-26 Coal Age reports mine reopened

1927 8398

1928

#560

#46

1930 #7

Geol. Notes? Yes

Coop. No. 49

Coal secs.? 8

Analyses No. 1110, 359, 5012, 5014, 5015, 5016

COUNTY

Examined by Whler; Kay;

Ref.

Coal bed name: Local # SHIPPING MINE

Survey No. 5

County Saline

Index No. 0634

K. - ACTIVE SHIPPING OR LOCAL COAL MINE.



COAL MINING INVESTIGATION

COOPERATIVE AGREEMENT

Operator, *Harrisburg Co, Coal Co* Date, *6-25-12* 191  
 Mine, Located *3* miles\* *SE* from *† Eldorado*  
 Location in mine, *entry face, 50' S. of T.M. EAST*  
 Total (vertical) depth from surface at point of sampling, *340* ~~feet~~ *feet*

In describing the beds and character of the members, note any member that is rejected by the miner. Note all clay and sulphur partings, whatever their thickness. Exclude from sample all clay and sulphur partings  $\frac{3}{8}$  inch thick or over (and even those of less thickness if they are rejected at mine or tippie).

SECTION OF BED AT POINT SAMPLED

No.	DESCRIPTION	FEET	INCHES
1	<i>Coal Bright Small Sulphur streaks</i>	<i>5</i>	<i>11</i>
2			
3			
4			
5			
6			
7			
8			
9			
10			
11			
12			
13			
14			
15	<i>Roof Drunk Slate Floor Fire clay 1100 T output</i>	<i>5</i>	<i>11</i>
16			
17			
	TOTAL,		

*24*

Is coal wet or dry? *Dry*  
 Time exposed, *45* hours, *45* minutes.  
 Weight, *40*  gross, *40* net.

What are the impurities, and how do they occur? *small streaks of sulphur*

What are shipped? *All*

What are excluded from the sample? *None*

\*Direction (N., NE., etc.) *S* Coal bed, *#5*  
 †Nearest railway station.

Town, *Eldorado* Mine, *Harrisburg Co.*  
 Sample No. *49* Can No. *1565* No. *49 0634*

I.—COAL SAMPLE SHEET. Sampler, *Maxwell - Gifford*  
*12200 #5012*





COAL MINING INVESTIGATION  
COOPERATIVE AGREEMENT

Operator, Harrisburg So. Coal Co. Date, 6-25 1912  
 Mine, Located 3 miles\* from † Eldorado  
 Location in mine, Entry Face 5th N. off Main W. (2000' from shaft)  
 Total (vertical) depth from surface at point of sampling, 340 ft.

In describing the beds and character of the members, note any member that is rejected by the miner. Note all clay and sulphur partings, whatever their thickness. Exclude from sample all clay and sulphur partings  $\frac{3}{8}$  inch thick or over (and even those of less thickness if they are rejected at mine or tippie).

SECTION OF BED AT POINT SAMPLED

No.	DESCRIPTION	FEET	INCHES
1	Coal Bright	2	9
2	Sulphur Band		1
3	Coal Bright		6
4	Mother Coal		1
5	Coal Bright	1	7
6			
7			
8			
9			
10			
11			
12			
13			
14			
15	Roof Drain Slate		
16	Floor Fire Clay		
17	1100 T Output	5	-
TOTAL,			

Is coal wet or dry? Dry  
 Time exposed, 45 hours, 45 minutes.  
 Weight, 30 gross, net.

What are the impurities, and how do they occur? Sulphur Bands

What are shipped? 1-3-4-5

What are excluded from the sample? 2

\*Direction (N., NE., etc.) NE †Nearest railway station.

Town, Eldorado Mine, Co. Harrisburg So.

Sample No. 49 B1 Can No. St. V. II No. 49

I.—COAL SAMPLE SHEET. Sampler, McAdams Steffen 0634

11962 #5015



COAL MINING INVESTIGATION

COOPERATIVE AGREEMENT

Operator, *Harrisburg So. Coal Co* Date, *6-25* 191*2*  
 Mine, Located *3* miles\* ~~SE~~ from *Eldorado*  
 Location in mine, *Entry face 5th S off Main W (2000' from shaft)*  
 Total (vertical) depth from surface at point of sampling, *340* ft.

In describing the beds and character of the members, note any member that is rejected by the miner. Note all clay and sulphur partings, whatever their thickness. Exclude from sample all clay and sulphur partings  $\frac{3}{8}$  inch thick or over (and even those of less thickness if they are rejected at mine or tippie).

SECTION OF BED AT POINT SAMPLED

No.	DESCRIPTION	FEET	INCHES
1	<i>Coal Bright with small streaks</i>	<i>5</i>	<i>11</i>
2			
3			
4			
5			
6			
7			
8			
9			
10			
11			
12			
13			
14	<i>Roof Draw slate Eldor Fine Clay 1100 T output.</i>	<i>5</i>	<i>11</i>
15			
16			
17			
TOTAL,		<i>5</i>	<i>11</i>

Is coal wet or dry? *Dry*  
 Time exposed, *1* hours, — minutes.  
 Weight, *10* gross, net.  
 What are the impurities, and how do they occur? *Sulphur streaks*  
*Small streaks of Mother coal*  
 What are shipped? *All*  
 What are excluded from the sample? *None*

Coal bed, *#5*  
 \*Direction (N., NE., etc.). †Nearest railway station.

Town, *Eldorado* Mine, *✓* Co. *Harrisburg So.*  
 Sample No. *4972* Can No. *St. 25* No. *49 0634*

I.—COAL SAMPLE SHEET. Sampler. *McDonald Stafford*  
*12555 #5016*





COAL MINING INVESTIGATION

COOPERATIVE AGREEMENT

Operator, *Harrisburg So. Coal Co.* Date, *6-25* 191 *2*  
 Mine, Located *3* miles\* *S.E.* from † *Eldorado*  
 Location in mine, *Entry face 5th S. of Main W.*  
 Total (vertical) depth from surface at point of sampling, *340* ft. *(2000' from shaft)*

In describing the beds and character of the members, note any member that is rejected by the miner. Note all clay and sulphur partings, whatever their thickness. Exclude from sample all clay and sulphur partings  $\frac{3}{8}$  inch thick or over (and even those of less thickness if they are rejected at mine or tippie).

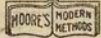
SECTION OF BED AT POINT SAMPLED

No.	DESCRIPTION	FEET	INCHES
1	Coal Bright with small streaks	5	11
2			
3			
4			
5			
6			
7			
8			
9			
10			
11			
12			
13			
14			
15	Roof Draw Slate		
16	Floor Fire Clay		
17	Out put 1100 T.	5	11
TOTAL,			

Is coal wet or dry? *Dry*  
 Time exposed, *1* hours, — minutes.  
 Weight, *50* gross, net.  
 What are the impurities, and how do they occur? *Sulphur Streaks small Mother of Coal Streaks.*  
 What are shipped? *All*  
 What are excluded from the sample? *None*

\*Direction (N., NE., etc.). †Nearest railway station. Coal bed, *#5*

Town, *Eldorado* Mine, Co. *Harrisburg So.*  
 Sample No. *449* Can No. *24 St. D.* No. *49 0634*



COAL MINING INVESTIGATION

COOPERATIVE AGREEMENT

Operator, *Aarrisburg Co. Coal Co.* Date, *6-25* 191*2*  
 Mine, Located *3* miles\* *SE* from † *Eldorado*  
 Location in mine, *Entry face 5th S off Main EAST (2300' from S)*  
 Total (vertical) depth from surface at point of sampling, *340* ft.

In describing the beds and character of the members, note any member that is rejected by the miner. Note all clay and sulphur partings, whatever their thickness. Exclude from sample all clay and sulphur partings  $\frac{3}{8}$  inch thick or over (and even those of less thickness if they are rejected at mine or tipple).

SECTION OF BED AT POINT SAMPLED

No.	DESCRIPTION	FEET	INCHES
1	<i>Coal Bright Small Sulphur streaks</i>	<i>5</i>	<i>11</i>
2			
3			
4			
5			
6			
7			
8	<i>26</i>		
9			
10			
11			
12			
13			
14			
15	<i>Roof Draw slate</i>		
16	<i>Floor Fire Clay</i>		
17	<i>1100T Output</i>	<i>5</i>	<i>11</i>
	TOTAL,		

Is coal wet or dry? *DRY*  
 Time exposed, *—* hours, *45* minutes.  
 Weight, *40* gross, net.  
 What are the impurities, and how do they occur? *Small streaks of Sulphur*  
 What are shipped? *All*  
 What are excluded from the sample? *None*

\*Direction (N., NE., etc.). †Nearest railway station.

Town, *Eldorado* Mine, *Co. Aarrisburg So.*  
 Sample No. *49C1* Can No. *156545* No. *49 0634*





COAL MINING INVESTIGATION

COOPERATIVE AGREEMENT

Operator, Harrisburg So. Coal Co. Date, 6-25 1912  
 Mine, Located 3 miles S.E. from † Eldorado  
 Location in mine, 5 1/2 So. of Main West (200' from shaft)  
 Total (vertical) depth from surface at point of sampling, 340 ft. ✓

In describing the beds and character of the members, note any member that is rejected by the miner. Note all clay and sulphur partings, whatever their thickness. Exclude from sample all clay and sulphur partings  $\frac{3}{8}$  inch thick or over (and even those of less thickness if they are rejected at mine or tippie).

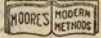
SECTION OF BED AT POINT SAMPLED

No.	DESCRIPTION	FEET	INCHES
1			
2			
3			
4			
5			
6			
7			
8			
9			
10			
11			
12			
13			
14			
15			
16			
17			
TOTAL,		—	—

Is coal wet or dry? \_\_\_\_\_  
 Time exposed, \_\_\_\_\_ hours, \_\_\_\_\_ minutes.  
 Weight, \_\_\_\_\_ gross, \_\_\_\_\_ net.  
 What are the impurities, and how do they occur? \_\_\_\_\_

What are shipped? \_\_\_\_\_  
 What are excluded from the sample? \_\_\_\_\_

\*Direction (N., NE., etc.) \_\_\_\_\_ Coal bed, #5  
 †Nearest railway station. \_\_\_\_\_  
 Town, Eldorado Mine, \_\_\_\_\_ Co. Harrisburg So.  
 Sample No. Drill Hole Can No. St. D #41 No. 490634  
 I.—COAL SAMPLE SHEET. Sampler, McDonnell  
#5014 Stafford



COAL MINING INVESTIGATION

COOPERATIVE AGREEMENT

Operator, *Harrisburg So. Coal Co.* Date, *6-25* 191*2*  
 Mine, Located *3* miles\* *SE* from † *Eldorado*  
 Location in mine, *Entry face 5th N. off Main W (200' from shaft)*  
 Total (vertical) depth from surface at point of sampling, *340* ft.

In describing the beds and character of the members, note any member that is rejected by the miner. Note all clay and sulphur partings, whatever their thickness. Exclude from sample all clay and sulphur partings  $\frac{3}{8}$  inch thick or over (and even those of less thickness if they are rejected at mine or tippie).

SECTION OF BED AT POINT SAMPLED

No.	DESCRIPTION	FEET	INCHES
1	Coal Bright	2	9.
2	Sulphur Band		1.
3	Coal Bright		6
Coal 4	Mother Coal		1
5	Coal Bright	1	7
6			
7			
Coal 8			
9			
Coal 10	<b>23</b>		
11			
x x x 12			
13			
14			
15	Roof Draw Slate		
16	Floor Fire clay		
17	1100 T output TOTAL,	5	-

Is coal wet or dry? *Dry*  
 Time exposed, *—* hours, *45* minutes.  
 Weight, *30* gross, net.  
 What are the impurities, and how do they occur? *Sulphur Band*  
 What are shipped? *1-3-4-5*  
 What are excluded from the sample? *2*

\*Direction (N., NE., etc.). †Nearest railway station.

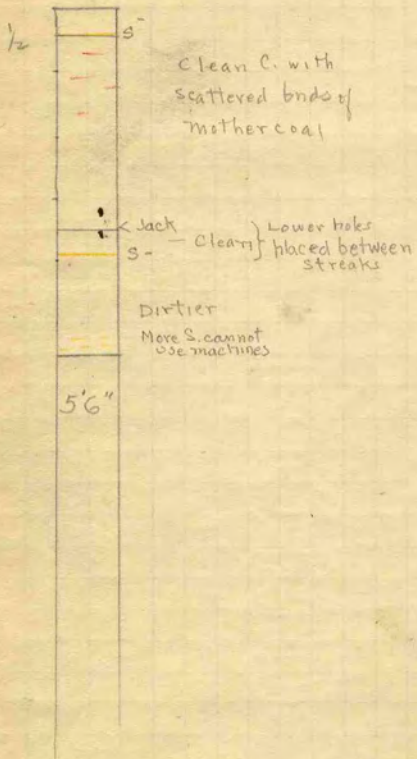
Town, *Eldorado* Mine, Co. *Harrisburg*  
 Sample No. *49 Bz* Can No. *1565 29* No. *49 0634*

*measured & stamped.*





47



0634

F. H. Kay



*Saline to No. 6*

Operator, **Harrisburg So. Coal Co.** Date **1/25/08**  
 Mine, **National #1 (Grayson)** Sec. **34 T. 8 S R. 7 E.**  
 Located, **2 1/2** miles from **Eldorado (SE)**  
 Location in mine, **Face back west entry; 800 W of shaft**

GRAPHIC SECTION		DESCRIPTION OF SECTION (AT POINT SAMPLED)		
In.	No.	No.	(Note character and thickness of roof)	Inches
			<b>Slate, black</b>	
			<b>Draw slate, thin</b>	
		<b>1</b>	<b>Coal</b>	<b>36</b>
<b>36</b>	<b>Coal</b>	<b>2</b>	<b>Coal, with sulphur</b>	<b>.5</b>
		<b>3</b>	<b>Coal</b>	<b>31</b>
			<b>Fire clay</b>	
	<b>2</b>			
<b>31</b>	<b>Coal</b>			
	<b>xxxx</b>			
<b>4.34</b>				
<b>35.79</b>				
			(Note character and thickness of floor)	
			Total thickness of coal.	<b>67.5</b>
<b>47.75</b>		Condition, <b>Dry</b>	Time, <b>1</b> hr. min.	
		Wt. Gross, <b>40</b> lbs.	Net, lbs.	
		What Nos. shipped by Co.?		
<b>12.12</b>		Excluded from sample: No.		
		Sample represents	in.	tons.
		Impurities? How do they occur?		



Sample No. **W-32** Can No. \_\_\_\_\_ Lab. No. **1110**

Collector, **Wheeler NB. 139 p 2** Coal: Survey No. **5**

Mine, **National No. 1 Co. Saline** Index No. **0634**

R.—COAL SAMPLE SHEET.

*12, 211*





COAL MINE NOTES.

COUNTY *Saline*

TOWN

MAP No. *0634*

T. *85*

R. *7E*

S. *34 S.E. N.E.*

OPERATOR *Harrisburg Southern Coal Co.*

OFFICE *135 Adams St. Chicago.*

MINE *#1 National*

TIPPLE *Wooden 3 tracks*

ENGINES *Keck Gonnerman.*

BOILERS

DRUM

SHAFT CAGE *Automatic dumping.*

HAULAGE *Mules.*

CARS *Wooden two tons capacity.*

VENTILATION

DRAINAGE

SPRINKLING

WORKING SYSTEM

MINING METHODS *C. powder used.*

*Part under cut and part shot off solid. Electric chain machines. Coal hard and roof irregular. requires hard shooting large number of windy shots. frequently set fire to coal.*

SIZE OF ENTRIES—MAIN CROSS ROOM NECK

SIZE OF PILLARS—MAIN CROSS ROOM

SHAFT CHAIN BARRIER

AMOUNT OF TIMBERING SIZE

PROPORTION OF COAL UTILIZED

AMOUNT AND CHARACTER OF WASTE

ACREAGE OF COAL MINED

ACREAGE OF COAL REMAINING

PROPORTION OF MINE RUN AND SCREENED COAL

METHOD OF SIZING *Shaker Screen.* RESCREENED

SIZES

PER CENT

PROPORTION AND SIZE OF WASHED COAL

DAILY OUTPUT *400 tons*

UTILIZATION

MARKETS

FREIGHT RATES

SELLING PRICES AT MINE

*0634*

COAL LAND OWNED LEASED HELD IN FEE

COST OF LAND OWNED LEASED HELD IN FEE

ADDITIONAL NOTES *Bldg. all wooden.*



COAL MINE NOTES.  
CONTINUED.

OPERATOR *Harrisburg Southern Coal Co.* MINE *\*1 National.*  
 ENTRANCE *Shaft.* NAME OF COAL BED *#5*  
 ELEVATION THICKNESS OF COAL  
 DEPTH TO FLOOR MAX. *4'-6"* MIN. *6'* AV. *5'-6"*  
 ALTITUDE OF COAL

LOCATION OF SECTION *Face of Back West Entry 800 W from shaft.*

No.	SECTION.	In.
1	✓ <i>Slate</i> <i>Coal</i> <i>Coal with sulphur</i> <i>Coal.</i> <i>Fire Clay</i>	
2		
3		<i>36</i>
4		<i>1/2</i>
5		<i>31</i>
6		
7		
8		
9		
10		
11		
12		
Tape <i>5'-7 1/2"</i>		Total <i>67 1/2</i>

SAMPLE No. *W 32*

CAN No.

CONDITION *Dry. 36"*

GROSS WEIGHT *40 1/2*

TIME EXPOSED *1 hr. 31"*

NOT SHIPPED

NOT INCLUDED

SECTION

Feet



PHYSICAL PROPERTIES BY NUMBERS

The dike is a fine grained, dark gray hard igneous rock. Near it occurs fissures in the coal filled with conglomerate. In the conglomerate are fragments of limestone, shale etc. A Zn. S. crystal was also found, in a 2' fissure of <sup>the</sup> conglomerate in a shale fragment.

ROOF *Black slate, thin draw slate. Numerous concretions and lumps projecting from roof.*

FLOOR *Hard fire clay. several feet.*

DIP

FAULTS, ETC. *Dike bearing SE. + NW encountered. Coal coked near intrusion.*

GAS

COLLECTOR *Wheeler*

REFERENCE *N.B. 139. P2*

*0634.*  
DATE *1-25-08*





# COAL MINING INVESTIGATIONS COOPERATIVE AGREEMENT

Mine Name or No., *1*

*2 1/2* miles *SE* from *Eldorado*.

Operator, 1912

*Harrisburg Southern Coal Co.*

Operator, 1911

R. *7 E.*



Entrance, *Shaft* Elev. *406.6* ft. { above, below, } *sea level. (1906)*

Depth to bottom coal, *337* ft. Alt. *64*.

### SURFACE DATA.

A. Topography *Almost level.* See  
B. Surficial materials, (1) Character *Clay.*

(2) Thickness, *18 ft.* (3) Effect on mining and shaft-sinking, of former drainage lines, underground water strata, etc.

*No trouble was experienced in sinking. The mine is dry. Sprinkled. Pump run about 2 hours daily.*

C. Outcrops, (1) Character, See  
(2) Structure, See  
(3) Fossil horizons, See  
Collection No.,  
(4) Evidences of subsidence, See  
D. Note collection of mine maps, drill records and shaft logs.

See drill record sheet.

E. Notes on surrounding area,

See

Coal bed name: Local, *#5*

Collector, *FH Kay*

Mine, *Grayson*

L.—SURFACE SHEET (Geol.)

Survey

State No. *0634*

Co. *Saline* Co-op. No. *49*







## UNDERGROUND DATA (cont'd.)

## K. (5) Physical character of coal in benches,

(a) Relative hardness, *Bottom 2 feet hardest.*(b) Lustre, *Middle part brightest.*(c) Fracture, *Tends to small blocks.*(d) Texture, *Banded.* See

## (6) Impurities in coal. other than bedded,

(a) Kind, *Principally gypsum.*(b) Position and persistence, *In cracks thruout mine. Turns red on exposure.*(c) Rejected, *No.* Ease of separation, *Too plentiful. (specimens.)* SeeL. Floor: (1) Material *Clay.*(2) Thickness *Said to be 10 ft.*

(3) Variation

(4) Note character, condition, tendency to heave, relation to undercutting commercial value.

*Many sulphur balls; heaves when moist. Is not undercut.*

See

(5) Clay sample No. *To be sent.* Location,*R.E. Crane. Mr Gerrard. Eldorado. sacks.*

## M. Stratigraphy

(1) Fossiliferous horizons underground, *In parts of mine black shale contains many shells with thin plate of pyrite.*Collection No. *I.*Location, *3rd S. off.**Main East.*

## N. Notes on effect of deep drilling in coal mine areas.

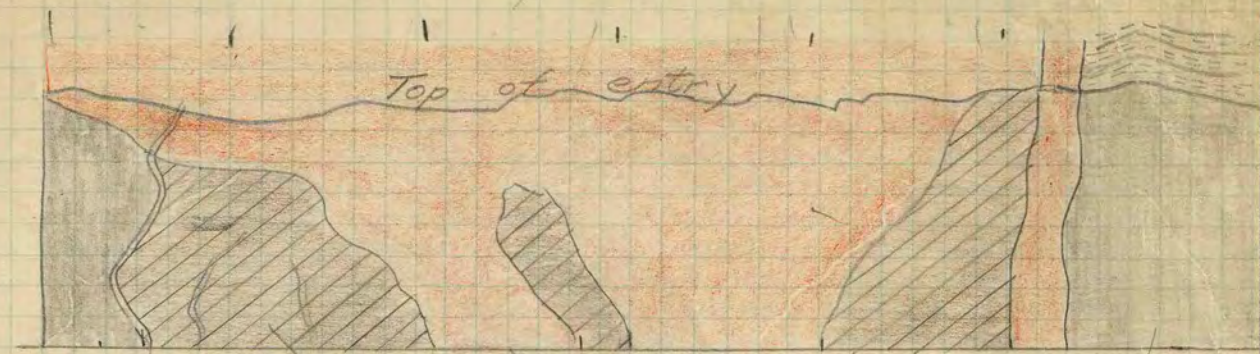
See

Collector, *F.H. Kay*Coal # *5*State No. *0634*Mine, *Grayson*Co. *Saline.*Co-op. No. *49*

John C. Moore Corporation, Rochester, N. Y. Binder and holes in leaves, each Patented 1906, 162362



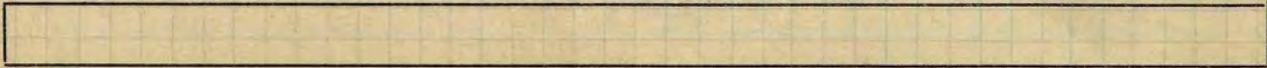
Dike No. (17)



Stringer of dike  
Coal completely silicified

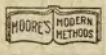
Scale  $\frac{1}{4}$  inch = 1 ft.  
Has been traced 1750 ft.  
Side view N. side Main East.  
450 ft east of shaft. Direction N. 10° W.

INDEX



Collector *May* State No. **6634**  
 Mine *Nigger Hill* Co-op No. **49**  
 Coal #5  
 Co. *Saline*  
 X.—EXTRA SHEET No. I.






INDEX

G.  
H.

The black slate is the normal roof in this mine. It is filled completely with concretions that range up to 4 feet in diameter. Contact with the coal is irregular, since concretions extend down into top of coal. Some times cut out as much as one or two feet coal.

-  Gray shale (White top).
-  Black shale (Black top).
-  Coal.
-  Gray shale above black top.



Coal is best under white top.

Collector F. H. Kay  
Mine Grayson

Coal #5  
Co. Saline

State No. 0634  
Co-op No. 49

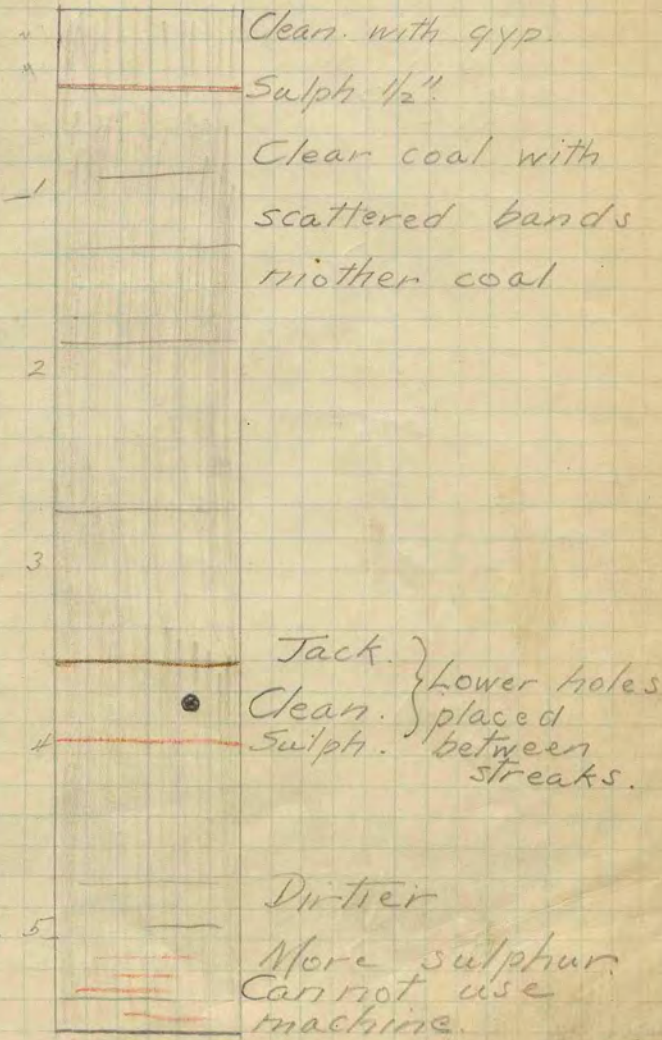


INDEX

6p

G.  
H.

In places the white occurs in a small sag, but coal is not cut out. In fact it is usually thicker at such places.



Collector F.H. Kay  
Mine Grayson  
X.—EXTRA SHEET No. III

Coal #5  
Co. Saline

State No. 0634  
Co-op No. 49





USPSM Bull 193 p 152

GRAYSON. SALINE NO. 6 MINE.

Analyses 28448, 28449, and 28450 (p. 33). Bituminous coal, Illinois field, from Saline No. 6, a shaft mine, 330 feet deep, at Grayson, 2½ miles east of Eldorado, on the Louisville & Nashville and the Big Four Railroads. Coal bed, ~~Herrin~~, or No. 5, of the Illinois Geological Survey; Carboniferous age, Carbondale formation. The coal is rather firm and is 5 to 7 feet thick; roof, shale, characterized by numerous pyrite concretions; floor, clay; cover at points of sampling, 350 feet. The bed was sampled by J. R. Fleming on May 15 and 16, 1917, as described below:

Sections of coal bed in No. 6 mine.

Section.....	A. 28448	B. 28449
Laboratory No.....		
Roof, slaty shale.....	<i>Ft. in.</i>	<i>Ft. in.</i>
Coal, bright.....	3 4½	2 2½
Bone and shale.....	a ½	
Bone and "sulphur".....		a ½
Coal, hard, lustrous.....	1 8	1 9
"Sulphur".....		Streak.
Coal, bright, hard.....		1 0
Floor, clay.....		
Thickness of bed.....	5 1	5 0
Thickness of coal sampled.....	5 ½	4 11½

a Not included in sample.

Section A (sample 28448) was cut in face of 7 room, 8 east, 3 southwest entry. Section B (sample 28449) was cut in face of 5 west, 4 southwest entry.

The ultimate analysis of a composite sample made by combining face samples 28448 and 28449 is given under laboratory No. 28450.

System of mining, room and pillar. In 1917 the coal was undercut by chain machines, both shortwall and breast. FF black blasting powder was used, the shots being fired by shot firers after miners had left the mine. Men employed numbered 180 underground. Haulage was by loose-gate cars and by mules. The daily production at time of sampling averaged 1,150 tons.

#6 Mine Saline Co. Coal No. 5 Index No. 0634.96