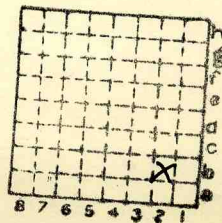




Form 180

BROOKER BROS



Sec. 8

T.	32	N.
R.	2	E.

Index No.

↓ Misc index 2652



Mine originally operated by: (1)

Date 1904

BROOKER BROS
VERMILLIONVILLE

Original name or number:

Illinois Coal Report p.

LATER OPERATORS

Date	Operator	Name or No.
2	1915 Smith Bros.	
3	1917 Brooker Bros	J.C. Quade
4		
5		
6		
7		
8		
9		
10		
11		
12		
13		
14		

* Also owners # See ownership sheet

Railroad, Wagon, Idle, Abandoned

IDENTIFICATION

County No.

Coal No.

Quad.

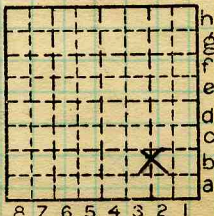
62

Part

7

County

LASALLE



Sec. 8

T. 32 N.

R. 2 E.

Index No.

2408

COAL MINE OPERATOR