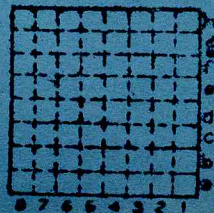


-- Only information from EFT notes from
Joseph Firth, mine inspector for the 6th
district (see next page)

Spicer mine



Sec. 30

T. 10 N.
S.

R. 9 W.
E.

Index No.

Mine Index

Macoupin county

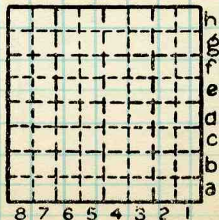
The Spicer mine is located in sec. 30,
T. 10N, R. 9W (TM 192).

--Joseph Firth, Mine Inspector gave info to:

By EFT Date 6/7/37

Quad. _____ Part _____

County MACOUPIN



Sec. 30
T. 10 N.
R. 9 E.
W.
Index No.