

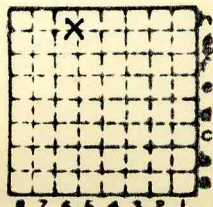


Form 180

IND. & ILL. Coal Corp. # 11

Mi. # 197

Co. # 98



Sec. 5

T. 8 N. 2

R. 3 W. 4

Index No.



Mine originally operated by: (1) **KORTKAMP COAL CO**
Date **1905 COAL REPORT** **HILLSBORO**

Original name or number:
Illinois Coal Report p.

LATER OPERATORS

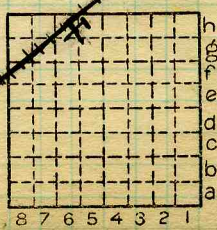
Date	Operator	Name or No.
2 1913	PEABODY COAL Co.	11
3 1916	C. & E. I	11
4 1919	ILL. COAL PROPERTIES	11
5 1920	IND. & ILL. COAL CORP.	11
6		
7		
8		
9		
10		
11		
12		
13		
14		

* Also owners # See ownership sheet

Railroad, Wagon, Idle, Abandoned
SHIPPING MINE

IDENTIFICATION

County No. **78** Coal No.
Quad. **202** Part
County **MONTGOMERY**



Sec. **5**
T. **8** N.
R. **3** W.
Index No.

1605.6h

COAL MINE OPERATOR



(Sheets) COAL PRODUCTION (Sheet)

Period						Tons
Mo.	Day	Year	Mo.	Day	Year	
					1927	0
					1928 (Idle)	

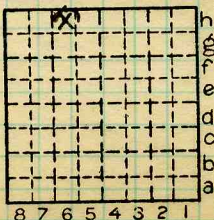
SUMMARIES		
No.	to	No.

Railroad, Wagon, Idle, Abandoned
IDENTIFICATION

County No. 78 Coal No.

Quad. 202 Part

County Montgomery



Sec. 5
T. 8 N.
S.
R. 3 W.
Index No.

COAL MINE—PRODUCTION

1605.6h



LOCATION AND ELEVATION

Location: side C.C.C. + St. W. J. R. R.
 side C. B. E. I. R. R.
 side Highway No.

on top. map Location sheet

Elevation: Method, 1. Est. () _____ ft.
 2. Inst. (kind _____) 651 ft.

By Kay Data sheet

DEPTH

Authority To coal ? 490 ft. ?
 Authority Rail to rail _____ ft.
 Top of coal above rail. (Est. Rule) _____ ft.
 To coal _____ ft.

ALTITUDE OF TOP OF COAL

By estimated data _____
 By instrumental data _____ ft.

Thickness

Max. in. Min. in. Aver. 90 in.

GEOLOGICAL DATA

Mine notes, date _____

Coop No. 197 Pyr. inv. Coal Ash inv.

CHEMICAL DATA

Analyses Face	U. I.	B. M.	<u>81097-8-9-8080</u>	Others
Car	U. I.	B. M.		Others
Org. Sulf	U. I.	B. M.		Others
Ash fusion	U. I.	B. M.		Others
Ash anal.	U. I.	B. M.		Others
	U. I.	B. M.		Others

Classification

Misc. tests: Coking. Cleaning Boiler

Published descriptions:—

Railroad, Wagon, Idle, Abandoned

IDENTIFICATION

County No. 78

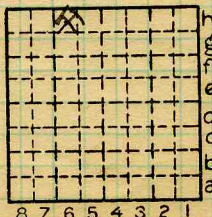
Coal No.

Quad. 202

Part

County

Montgomery



Sec. 5

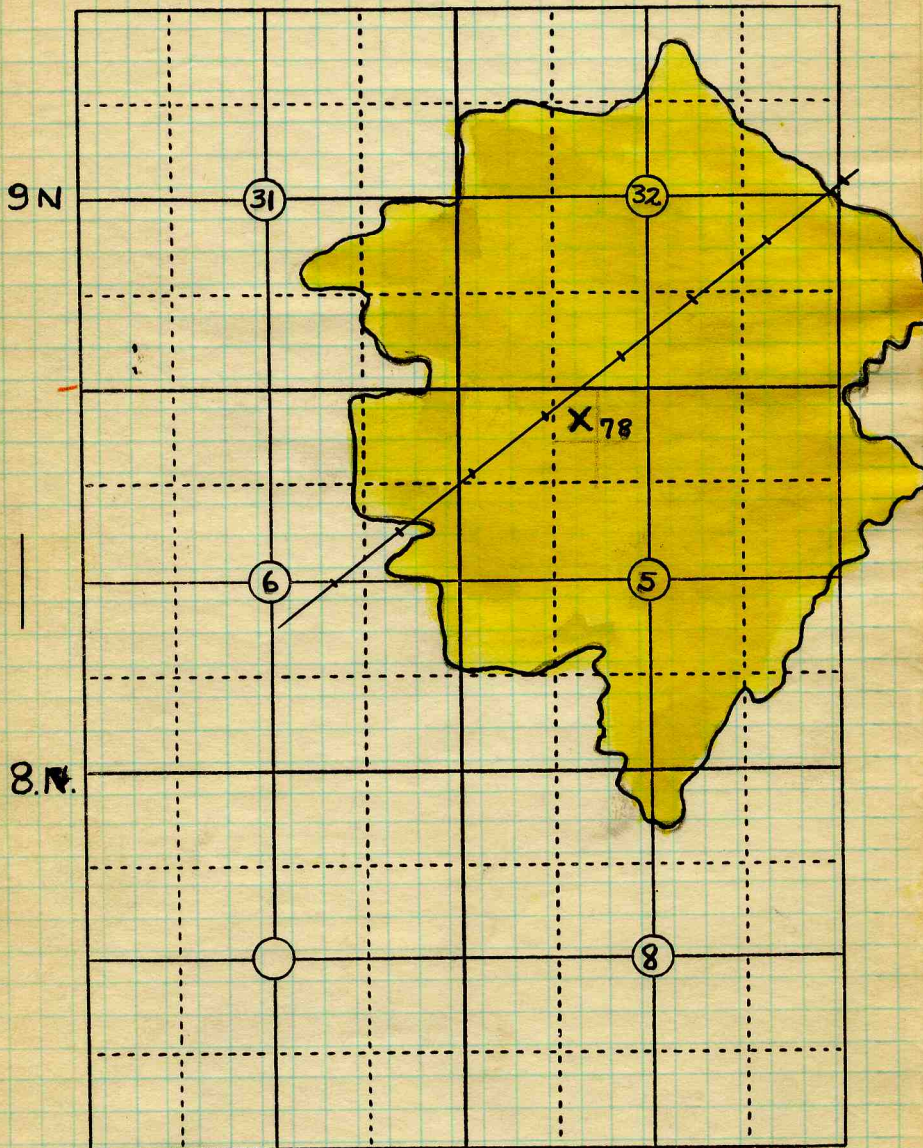
T. 8 N.

R. 3 E.

Index No.

1605.6h

COAL MINE LOCATION AND DATA



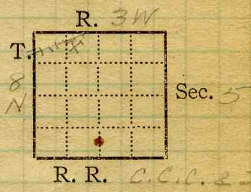
R3W

Date Map 5-30-24. Operator Name or No. 11.

County Montgomery Ind. & Ill. Coal Co. Index No. 1605.6h



Mine Name or No., *No. 11*
2 1/2 mile N.E from *Hillsboro*
 Operator, 1911 *Indiana & Illinois Coal Corp.*
 Operator, 191



Entrance, *shaft* Elev., *?* ft. (above, below, Alt. *462*)
 Depth to ~~bottom~~ coal, *490* ft. Alt. *462*
 SURFACE DATA.

- A. Topography, *Rolling* See
- B. Surficial materials. (1) Character, *Till*
- (2) Thickness, *No information* (3) Effect on mining and shaft-sinking, of former drainage lines, underground water strata, etc. *No information.*

- C. Outcrops, (1) Character, See
- (2) Structure, See
- (3) Fossil horizons, See
- Collection No.,
- (4) Evidences of subsidence, See

D. Note collection of mine maps, drill records and shaft logs.
Freston Crowell, Jr. Engr. Nokomis, Ill.
rec'd
Shaft logs from W.T. Haywood Ass't Gen'l Supt.
 See drill record sheet,

E. Notes on surrounding area,

See

Coal bed name: Local, Survey No. *6*
 Collector, *Netzerband*
 Mine, *Ind & Ill Corp * 11* Co. *Montgomery* Index No. *1605-38*
 L.—SURFACE SHEET (Geol.)



F. Thickness of rock above bed worked, *No information*
 (1) Important variations,

See

G. Note presence of strata having important effect on mining,

See

- Impure shaly limestone*
 (1) Position, *Above the so-called cap rock*
 (2) Character, *Soft, impure, shaly limestone*
 (3) Persistence, *In patches.*
 (4) Other workable coal beds,

See

H. Cap rock, *Limestone*

- (1) Thickness, *6'-9'*
 (2) Height above coal, *1"-60"*

See

I. Immediate roof, *Shale*

- (1) Thickness, *1"-60"* (2) Contact with coal,
Clean & regular
 (3) Horizontal variation, *Varies considerable*
in character.

See

J. Draw slate. (1) Thickness, (2) Contacts

- None* *Black shale draws in places.*
 (3) Persistence,

K. Coal bed: Max. *96* Min. *72* Av. *84* inches

- (1) Benches, *Two.*
 (a) Position, *Above & below B.B.*
 (b) Persistence, *Thruout mine.*

See

- (2) Bedded impurities, kind, position in benches, persistence, ease of separation. *B.B. (1/2-3),*

grey shale lenticular; charcoal bands

See

- (3) Irregularities in continuity of bed (due to deposition, erosion, or movement), *Few slips which*

come into coal.

- (a) Effect on mining, *require timbering*

See

SECTION				
Ft.	fn.	Name		Sym.
9		Limestone		
5		Shale		
7		Coal		
?		Floorclay		
			<i>10' = 4'</i>	

Collector, *Netzband*

Coal: Survey No. *6*

Mine, *Inde III Corp #11 Co. Montgomery*

Index No. *1605.38*



K. (5) Physical character of coal in benches,

- (a) Relative hardness, *same as Beekmantown district*
- (b) Lustre, *Bright-gloss layers giving way to bright & dull (1/6 to 1/2)*
- (c) Fracture, *Blocky* ^{at 2 1/2 in} *dull most prominent at base*
- (d) Texture, *Laminated* See
- (6) Impurities in coal, other than bedded,
- (a) Kind, *Pyrite lenses, calcite stringers*
- (b) Position and persistence, *Above B.B., throat mine.*

(c) Rejected, *large same* Ease of separation, See

L. Floor: (1) Material, *Floor clay ls. below.*

- (2) Thickness, *No information*
- (3) Variation, *No observed variation*

(4) Note character, condition, tendency to heave, relation to undercutting commercial value. *The floor clay is hard, massive, light*

to medium gray, it becomes calcareous as it goes towards the ls. beneath; no tendency to heave; used to undercut upon; value unknown.

See

(5) Clay sample No. Location,

M. Stratigraphy,

- (1) Fossiliferous horizons underground,

Collection No. Location,

N. Notes on effect of deep drilling in coal mine areas.

See

Collector, *Netzeband*Coal: Survey No. Mine, *Ind & Ill Corp #11* Co. *Montgomery*Index No. *1605.38*

N.—UNDERGROUND SHEET (Geol.)



Illinois - Indiana #11

The roof varies greatly in the south
clod.

The roof is ^{clod} "slate" or Limestone.
The roof is mostly black clod
which breaks free from coal. It is from
4" to 6" thick. This gives way to
black slate which draws with the coal.
The Limestone comes down in some
places and the clod feathers out. The
clod forms a very dangerous roof
falling without warning.

The roof in the 7th S fell to a
height of 30' exposing the following section
app. of 18" shale (clod)

- 9' Limestone
- 1' clay-carbonaceous mixture
- 1' shaly lime or marl
- 2' black "slate"
- 3' slt clod (many slips)

The shale in the 8th E off 4th S
feathers out and there is a "slate" roof
for about 100'. This thins out and the
lime powers, forming the roof. There seems
to be two formations of Limestone
the lower, a shaly lime, full of slips.
The bottom is very irregular and
full of concretions and projections.
The upper bed has a more regular contact.
The 6th E N has a coal roof 14" thick.
About 4'-10" slate & limestone. Rather
irregular lower contact.

The 6th N off 7 W. N. 11.
Top coal left as roof 14"-18"
"Slate" about 1'
Brownish lime 1'
Brown & green shale with one 2" limestone
band. App. 30"
Limestone, shaly, light gray 3"
Limestone, less shaly, brownish 6"
Ind & Ill Corp #11 Montgomery 1605

(17787-1M)



SHEET Aug. 18, 1921

T 8N

R 3W

S 5

COMPANY Ind 2 Ill. Coal Corp 211

HOLE No.

No.	STRATA	THICKNESS		DEPTH	
		FEET	IN.	FEET	IN.
	<u>4th 5 off 7th E.S.</u>				
	Limestone				
	Clod 3-4"				
1	Coal	25	1/2		
2	Pyrite		1/4		
3	Coal	24	3/4		
4	Charcoal		1/4		
5	Coal	11	1/2		
6	Pyrite lens		1/4		
7	Coal		8		
8	Grey shale B.B.		2	1/8	
9	Coal		12	1/2	
	Tape 84 3/4				
	Time 4 hrs 34 min 14 69 10:35				
	Condition Dry, fresh 404				
	Weight 33#				
	Excluded. 8				
	F 21-19				
	Can No 18309				
		84	15/16		

#81097

County **Montgomery**

Index No. **1605.38**

T.—DRILL RECORD.



In the 4th North, the Limestone again becomes low in places and forms the roof.

The unevenness of the contact & the truncating of lower formations indicate that the lime was deposited on an erosional surface.

In the 4th N. off the 7th W. There was one slight Roll. The roof lowered about 2', the coal paralleling it.

Note:

Roof: blk. slate 0 - 18"
Ls. 13'

Floor: Fireclay 4'
Ls.

Depth: 500'
Thickness of coal: 8'

(J.D., 1956 - taken from notes furnished by B. F. Brown from old files of Block Bros. C.C.)

(17787-1M)



SHEET *Aug. 18, 1921* F *8 N* R *3 W* S *5*
 COMPANY *Ind & Ill. Coal Corp #11* HOLE No.

No.	STRATA	THICKNESS		DEPTH	
		FEET	IN.	FEET	IN.
	<u>6th E. N.</u>				
	Black shale.				
	1 Coal (left as roof) 14"				
	2 Coal	25	3/4		
	3 Pyrite lens	1			
	4 Coal	1	3/4		
	5 Charcoal		1/4		
	6 Coal	4	1/2		
	7 Pyrite lens		1/4		
	8 Coal	7	1/2		
	9 Charcoal lens		3/8		
	10 Coal	9	1/4		
	11 Pyrite band		1/4		
	12 Coal	11	3/4		
	13 Grey shale B.B.		3/4		
	14 Coal	17			
		77	3/4		
				77	3/8
	Time 3 hrs. — min ¹⁵³⁰ ₁₂₁₃₀				
	Condition - Damp, fresh.				
	Weight 23#				
	Excluded. 1, 3, 13				
	T-21-20 Can No. 446				

81098

County *Montgomery*
 T.—DRILL RECORD.

Index No. *1605.38*



SHEET *Aug. 18, 1921*
COMPANY *Inde Lill Coal Corp #11*

T *8N* R *31W* S *5*
HOLE No.

No.	STRATA	THICKNESS		DEPTH	
		FEET	IN.	FEET	IN.
	<u><i>4th N., 7th W. N.</i></u>				
	<i>Black shale</i>				
	<i>1 Coal (left as roof) App 14"</i>				
	<i>2 Coal</i>		<i>17</i>		
	<i>3 Pyrite</i>		<i>1/8</i>		
	<i>4 Coal</i>		<i>10 3/4</i>		
	<i>5 Grey shale band</i>		<i>1/4</i>		
	<i>6 Coal</i>		<i>9 1/2</i>		
	<i>7 Pyrite lumps</i>		<i>1/4</i>		
	<i>8 Coal</i>		<i>22 1/2</i>		
	<i>9 Pyrite</i>		<i>1/4</i>		
	<i>10 Coal</i>		<i>9</i>		
	<i>11 Charcoal, shale & pyrite</i>		<i>1/2</i>		
	<i>12 Coal</i>	<i>13.B</i>	<i>1 1/2</i>		
	<i>13 Dark grey shale & pyrite</i>		<i>1 1/2</i>		
	<i>14 Coal</i>		<i>15 1/2</i>		
	<i>Tap 86</i>				
	<i>Light grey floor clay</i>		<i>86 3/8</i>		
	<i>Time 2 hrs 17 min ³ 1:40</i>				
	<i>Condition - Damp, fresh</i>				
	<i>Weight 28#</i>				
	<i>Excluded 1, 11, 12, 13</i>				
	<i>T-21-21 Can No. 920</i>				

#81099



STATE GEOLOGICAL SURVEY.

Montgomery COUNTY Mine Location RANGE 3 1605

TOWNSHIP 8

RANGE 3

Letter from T.C. Keller says this Taylor Springs mine. reopened Feb. 17.

6	5	4	3	2	1
7	8	9	10	11	12
18	17	16	15	14	13
19	20	21	22	23	24
30	29	28	27	26	25
31	32	33	34	35	36

USED IN COOP. REPT. 1912.

Now Teabody # 11

Kortkamp C Co.?

Operator Brunwell Coal Co.
 Office address Mc Council Bld. Chicago
 Mine name or number Kortkamp.
 Surface at mine is 651.87 feet above sea level or about _____ feet (above) (below) railroad station at _____
 Depth to bottom of coal is 462.92 feet
 Average thickness of coal is 7 feet 6" inches

Kindly note changes in name and address. ✓✓

651.87
 462.92
 188.95
 Montgomery
 1605 1705

USED IN COOP. REPT. 1912.

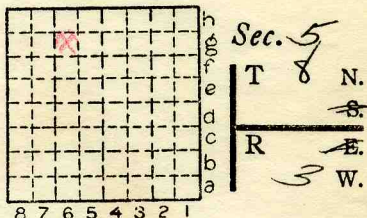
Location and Elevation Data

Location: Exact Approximate
(Approximate only if no trace of record of original exists)
Location by 0-60
Date Notebook No. Page
Looseleaf ref.
Map files No.

Description of Location

Position in sec., 1/4 sec., 40 acres

860 feet from North line
3700 feet from East line
feet from South line
feet from West line



Other description:

Farm No.
Company *Self-Dred Co.*
Co. (Kortkamp Mine)
No. *11 AS.*
County No. *199*

Elevation *659.6* ft.
By *Wilson*

Method: Level, transit, alidade, hand level

Elevation of
Height of point above ground
Date Notebook P. *9*
Looseleaf ref.

Map files No.
Description of item: (drill hole, mine, etc.) *Air Shaft. Abnd*

County *Mont.* Quadrangle *X 202* Index No. *1605766*



Checked on tab.

Repl