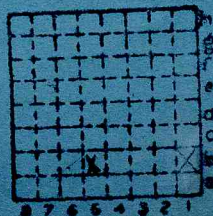


Location by company mine map.  
Map files # 4103.F7 i5.1-35

650' from east line, 850' from south line of SW

Orient Number Two Coal Co. "Orient # 2"

Coal Rept. # S-4  
Mine Index # 366  
County # 267



Sec. 13 B5

T.	7	W.
		S.
R.	2	E.

Index No.

FRANKLIN COUNTY



Mine originally operated by: (1)

Date Chicago, Wilmington & Franklin Coal Co.  
1922

Original name or number: Orient #2 (New Orient?)  
Illinois Coal Report 1922 p.

LATER OPERATORS

Date	Operator	Name or No.
2 <u>1958</u>	<u>Freeman Coal Co.</u> <u>took over CW + F Coal Co but</u> <u>operated as CW + F</u>	<u>Orient # 2</u>
4 <u>1959</u>	<u>Orient Number Two Coal Co.</u>	<u>Orient # 2</u>

900' N 700' W of SE Corn. SE SW (1948)

\* Also owners

# See ownership sheet

1446  
OK

Railroad, Wagon, Idle, Abandoned Shaft

B. & O., C. & E. I., Mo. Pac.,  
I. C.

IDENTIFICATION

County No. 267

Coal No.

W. Frankfort

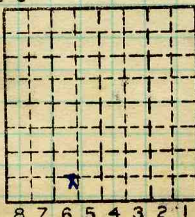
Part

Quad. 263

(1948)

9' 2"

County Franklin



Sec. 13

T. 7 S.

R. 2 W.

Index No.

1113

COAL MINE OPERATOR



Mine originally operated by: (1)

Date **Chicago, Wilmington & Franklin Coal Co.**

~~1923~~

Original name or number: **New Orient**

Illinois Coal Report **1954 p. 75**

**West Frankfort**

LATER OPERATORS

Date

Operator

Name or No.

- 2
- 3
- 4
- 5
- 6
- 7
- 8
- 9
- 10
- 11
- 12
- 13
- 14

\*Also owners

#See ownership sheet

**SHAFT** Railroad, Wagon, Strip, Idle, Abandoned

643'

IDENTIFICATION

9'6"

County No. \_\_\_\_\_

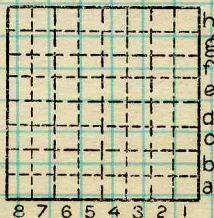
Coal No.

Coal Report No. \_\_\_\_\_

□ 6

Quad.

County **FRANKLIN**



Sec.

T.

N.  
S.

R.

E.  
W.

Index No.

COAL MINE OPERATOR



Orient # 2

( 2 Sheets)

COAL PRODUCTION

(Sheet 1)

Period						Tons		
Mo.	Day	Year	Mo.	Day	Year			
					1927	1	528	888
					1931	1	566	660
					1932	1	061	576
					1933		982	065
					1934	1	206	619
					1935	1	387	812
					1936	1	485	604
					1937	1	562	343
					1938	1	237	860
					1939	1	363	095
					1940	1	749	767
					1941	1	690	873
					1942	2	322	752
					1943	2	914	589
					1944	3	166	323
					1945	2	991	939
					1946	2	469	470
					1947	2	465	085
					1948	2	254	139
					1949	1	561	933
					1950	1	936	762
					1951	1	746	918
					1952		673	881
					53	1	361	739

SUMMARIES

No. to No.

Railroad, Wagon, Strip, Idle, Abandoned

Shaft

Sec. 13

IDENTIFICATION

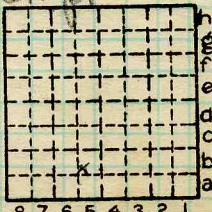
County No. 267

Coal No. 6

Coal Report No. 5-4

Quad. 263

County Franklin



T. 9

R. 2

Index No.

1113 65

COAL MINE—PRODUCTION

ILLINOIS GEOLOGICAL SURVEY, URBANA





( 2 Sheets)

COAL PRODUCTION

(Sheet 2 )

Period						Tons	
Mo.	Day	Year	Mo.	Day	Year		
		1954				974	758
		1955				1 258	663
		1956				1 289	494
		1957				1 072	758
		1958				1 071	377
		1959				852	606
		1960				599	714
		Abn Dec 1960					

SUMMARIES

No. to No.

Railroad, Wagon, Strip, Idle, Abandoned

IDENTIFICATION

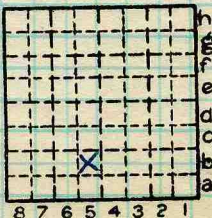
County No. 267

Coal No. 4

Coal Report No. S-4

Quad. 263

County FRANKLIN



Sec. 13

T. 7 S.

R. 2 E.

Index No.

1113 B5

COAL MINE—PRODUCTION

ILLINOIS GEOLOGICAL SURVEY, URBANA





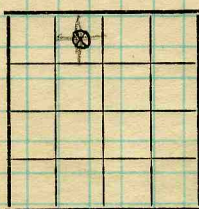
Location and Elevation Data

Location: Exact  Approximate  
 (Approximate only if no trace or record of original exists)  
 Location by W.B. Roe  
 Date 7-27-1932 Notebook No. 614 Page 9(2062)  
 Looseleaf ref. \_\_\_\_\_  
 Map files No. 5-28-28

Description of location

Position in sec., 1/4 sec., 40 acres

675 feet from North line  
3250 feet from East line  
 \_\_\_\_\_ feet from South line  
 \_\_\_\_\_ feet from West line



Sec. 10  

T.	7	S.
R.	2	E.

Other description: MN

Farm \_\_\_\_\_  
 No. \_\_\_\_\_  
 Company Chicago, Wilmington & Franklin Coal Co  
 No. 2 Orient  
 County No. 277

Elevation 413.8 ft.

By W.B. Roe

Method: Level, transit, alidade, hand level  
Plane table and alidade

Elevation of Ground at N side of shaft

Height of point above ground \_\_\_\_\_

Date 7-27-1932 Notebook 614 P. 9(2062)

Looseleaf ref. \_\_\_\_\_

Map files No. 5-28-28

ADD IN FILES

Description of item: (drill hole, mine, etc.) New circular air shaft at head of  
entry of No. 2 (New) Orient mine - Top of coal = 524' Elev. = -110

County Franklin (45576-1M-10-30) Quadrangle W. Frankfort Index No. 1101  
523.6  
1101.5g



(35031-500-6-23) C. Moore Corporation, Rochester, N. Y. Binder and holes in leaves, each Patented 1906.

Mine Name or No. Orient No 2 Mine Address \_\_\_\_\_

Operator Chicago, Wilmington, & Franklin Coal Co

Main Office Address 332 S. Michigan Ave  
Chicago Ill

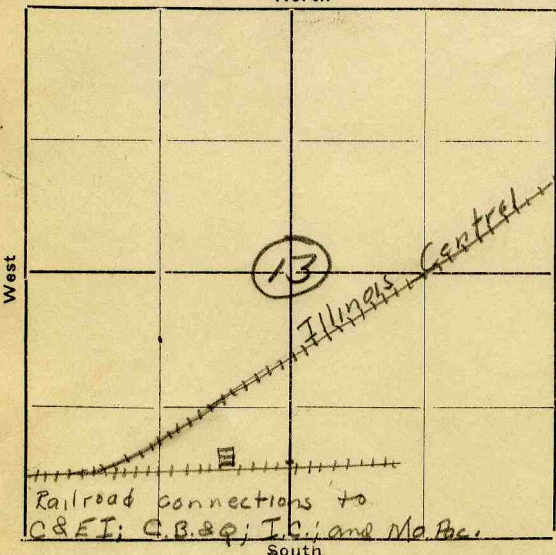
Location of Mine:

Township Name Deering County Franklin

Section No. 13 Township 7 S Range 2 E 11

Indicate location of mine and position of R. R. in plat of section below.

North



Kindly state number of feet from quarter section lines:

\_\_\_\_\_ from N. line  
\_\_\_\_\_ from E. line  
900 from S. line  
2000 from W. line

Idle entire year 19\_\_\_\_ Yes  
No

Abandoned (date) 19\_\_\_\_

Surface landing is ? feet above sea level or about \_\_\_\_\_ feet (above) (below) railroad station at \_\_\_\_\_ (nearest town).

Depth to top of coal is 480 feet.

Average thickness of coal is \_\_\_\_\_ feet \_\_\_\_\_ inches.

Do not fill in below this line.

Coal Bed Name Belleme Survey No. 6

County Franklin Index No. \_\_\_\_\_



LOCATION AND ELEVATION

Location: side C. B. & Q., C. B. & E. I., R. R.  
 side Mo. Pac., I. C. R. R.  
 side Highway No.

on top. map Location sheet

Elevation: Method, 1. Est. ( ) \_\_\_\_\_ ft.  
 2. Inst. (kind \_\_\_\_\_) 399 ft.

By Co. Data sheet

DEPTH  
 Authority D. J. Carroll, Engr. To coal 491 ft.  
 Authority Rail to rail 500 ft.  
 Top of coal above rail. (Est. Rule) \_\_\_\_\_ ft.  
 To coal 479 ft.

ALTITUDE OF TOP OF COAL

By estimated data \_\_\_\_\_  
 By instrumental data -80 ft.

Thickness

Max. in. Min. in. Aver. 108 in. 110

GEOLOGICAL DATA

Mine notes, date Yes \_\_\_\_\_

Coop No. Pyr. inv. Coal Ash inv.

CHEMICAL DATA

Analyses Face	U. I.	B. M.	Others
Car	U. I.	B. M.	Others
Org. Sulf	U. I.	B. M.	Others
Ash fusion	U. I.	B. M.	Others
Ash anal.	U. I.	B. M.	Others
	U. I.	B. M.	Others

Classification

Misc. tests: Coking. Cleaning Boiler

Published descriptions:—

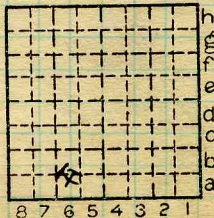
900' N }  
 900' W } SE COR SE SW

Railroad, Wagon, Idle, Abandoned

IDENTIFICATION

County No. 267  
 W. Frankfort  
 Quad. 263  
 County

Coal No. 6  
 Part



Sec. 13

T. 7 N. S.  
 R. 2 E. W.  
 Index No.

1113. 26  
 b5

COAL MINE LOCATION AND DATA





Operator, *Chas. Wilmington & Franklin Coal Co* Date *Aug 17, 1931*  
 Mine, *Orient No 2* Sec. *13* T. *75* R. *2 E*  
 Location in mine, *8000' North 3500' West of shaft*

GRAPHIC SECTION		DESCRIPTION OF SECTION (AT POINT SAMPLED)	
In.	No.	No.	Inches
	9		
6	8		Probably 2' of top coal remaining.
			Height of section 83"
	7		(9) Good parting. Top of section
	6		(8) Dull coal $\frac{3}{4}$ good parting
	5		(7) Parting
			(6) "
			(5) Parting of Charcoal
			(4) Parting of Charcoal.
			(3) Blue band
	4		(2) Charcoal and bone coal 1"
			(1) Floor of entry. There is 8" or more of coal below.
			(Note character and thickness of floor)
	3		Total thickness of coal
	2		
	1		
			Condition, Time, hr. min.
			Wt. Gross, lbs. Net, lbs.
			What Nos. shipped by Co.?
			Excluded from sample: No.
			Sample represents in. tons.
			Impurities? How do they occur?

(1 division = 3 in.)

Sample No. *24* Can No. *R 24* Lab. No.

Collector, *H. Hutchinson* Coal: Survey No.

Mine, *Orient No 2* Co. *Franklin* Index No.

**6**

8000' North and 3500' West of Shaft.

Collector: *[Faint handwritten name]* Date: *[Faint handwritten date]*

Elevation	Dip	Description
8000	10°	Reddish-brown clay shale
7950	12°	Dark gray shale
7900	15°	Light gray shale
7850	18°	Dark gray shale
7800	20°	Light gray shale
7750	22°	Dark gray shale
7700	25°	Light gray shale
7650	28°	Dark gray shale
7600	30°	Light gray shale
7550	32°	Dark gray shale
7500	35°	Light gray shale
7450	38°	Dark gray shale
7400	40°	Light gray shale
7350	42°	Dark gray shale
7300	45°	Light gray shale
7250	48°	Dark gray shale
7200	50°	Light gray shale
7150	52°	Dark gray shale
7100	55°	Light gray shale
7050	58°	Dark gray shale
7000	60°	Light gray shale
6950	62°	Dark gray shale
6900	65°	Light gray shale
6850	68°	Dark gray shale
6800	70°	Light gray shale
6750	72°	Dark gray shale
6700	75°	Light gray shale
6650	78°	Dark gray shale
6600	80°	Light gray shale
6550	82°	Dark gray shale
6500	85°	Light gray shale
6450	88°	Dark gray shale
6400	90°	Light gray shale
6350	92°	Dark gray shale
6300	95°	Light gray shale
6250	98°	Dark gray shale
6200	100°	Light gray shale

Section to shaft: *[Faint handwritten notes]*

Section to shaft: *[Faint handwritten notes]*

Section to shaft: *[Faint handwritten notes]*

Section to shaft: *[Faint handwritten notes]*



See  
Extra  
Sheet  
No.

Entrance *shaft*  
 Kind of tippel *steel and concrete*  
 Motive power for hoist *electrical*  
 Source if electrical *C.T.P.S.*  
 Kind of hoist (cage, skip, etc.) *skip -*  
 Kind of haulage *motor*  
 Mining equipment *mining and loading machine*  
 Note any features of the equipment that are of special interest *rotary dump*

**SURFACE DATA.**

A. Topography, *Flat - adjacent to valley of Mill Fork - Biguddy*  
 B. Surficial materials, (1) Character,

(2) Thickness, *100 ±* (3) Effect on mining and shaft-sinking, of former drainage lines, underground water strata, etc.

*None reported - Very little water*

C. Outcrops, (1) Character,  
 (2) Structure,  
 (3) Fossil horizons,  
 Collection No.,  
 (4) Evidences of subsidence,

D. Note collection of mine maps, drill records and shaft logs.

*Mine map as of Jan 1, 1925 used below -*  
*5-28-12*

See drill record sheet,

E. Notes on surrounding area,

Coal bed name: Local, *No 6*

Collector, *Kee*

Mine, *Orient No 2*

Co. *Franklin*

Survey No.

Index No. *1113-31*



256693

## K. (5) Physical character of Coal,

- (a) Relative hardness, *middle benches rather under squeeze  
bottom hardest - top medium*
- (b) Lustre, *top and middle brighter than bottom*
- (c) Fracture, *middle less blocky and more irregular*
- (d) Texture, *than top or bottom* See X1

- (6) Impurities in coal, other than bedded, kind, position, persistence, ease of separation, etc.

*Abt calcite in facies, less gypsum -  
Some stringers of pyrite, esp. in the  
third bench from top -*

See

## L. Floor: (1) Material,

- (2) Thickness, *4" to 18" (max 48" by pt 1)*
- (3) Variation, *only in thickness*
- (4) Note character, condition, tendency to heave, relation to undercutting, commercial value.

*Seems to heave readily, but not  
far.*

See

(5) Clay sample No.

Location,

## M. Stratigraphy,

- (1) Fossiliferous horizons underground,

*stigmaria in floor clay  
some plants in base of roof shale*

Collection No.

Location,

## N. Notes on effect of deep drilling in coal mine areas.

See

Collector, *HEC*Cola: Survey No. Mine, *New Orient*Co. *Franklin*Index No. *11131*





Symbol	Description	Inches
(1 division = 3 in.)	roof of shale - not exposed	and 8 1/2
	top coal rptd - but not measured	24-0
	coal bright or glance	- 9
	bone band with glance ptg	1-4
	coal - bright, but carrying several bands of bone, max 1/4" also some char and some pyrite bands	23-0
	charcoal band lens	1-0
	coal with a band of charcoal midway	13-0
	charcoal	0-1
	coal with several charcoal bands max 1/8"	17-0
	charcoal and bone	0-2
	coal	8-2
	shale - B13	0-4
		9-3
	charcoal band	0-2
	coal	5-2
	charcoal	0-4
	coal	21-2
	Point B on mm. map -	
	Flour clay Tapd 105"	105-6

Collector, HEC

Mine, Orient 2

Co. Franklin

Coal: Survey No.

Index No.





INDEX

(36713-500-7-20)

250693

- K1 While not prominently developed, five benches can usually be found in the bed -  
Two are usually left up for top -  
A third is ca 24" ~~slab~~ below  
A middle bench ca 36" overlies the B/B  
A bottom bench, ca 30" underlies the B/B  
It is reported that a thickening of bottom coal is indicative of thickening of all benches.
- K2 In places the shale or bone band known as the blue band is thin or absent, elsewhere it is accompanied by other bands of bone within 6" - in such cases the thickest band is called the blue band. Distinction some places difficult even to miners.
- K3 The North dip of the bed, and the few rolls cause some grading - just south of the hoist shaft the bottom is up 110" and further south it will be extended down to get a gravity track for empties.
- K5 The middle bench is not best in quality and in lump production, but under roof pressure it shows a marked tendency to go to fines.

Collector

X- /

Index No.

County

EXTRA NO.



# ILLINOIS GEOLOGICAL SURVEY, URBANA

Log of Hoisting Shaft	Thickness	Top	Bottom
Tough clay	15.0	0.0	15.0
Sandy clay	28.0	15.0	43.0
Quicksand	19.0	43.0	62.0
Clay	2.0	62.0	64.0
Clay and sand mixed	10.0	64.0	74.0
Sandy shale	23.5	74.0	97.5
Sandstone	28.5	97.5	126.0
Shale, dark	12.5	126.0	138.5
Coal	.3	138.5	138.8
Floor clay	5.2	138.8	144.0
Shale, gray	13.0	144.0	157.0
Shale, sy	99.5	157.0	256.5
Shale, gray	19.5	256.5	276.0
Sandstone	9.0	276.0	285.0
Shale, sy	15.0	285.0	300.0
Shale, dark	6.6	300.0	306.6
Coal	.8	306.6	307.4
Floor clay	3.6	307.4	311.0
Shale, sy	26.0	311.0	337.0
Shale, dark	5.5	337.0	342.5
Coal	.2	342.5	342.7
Floor clay	1.3	342.7	344.0
Limestone	5.5	344.0	349.5
Shale, dark	6.7	349.5	356.2
Coal	2.8	356.2	359.0
Floor clay	.5	359.0	359.5
Shale, sy	40.5	359.5	400.0
Shale, dark	6.0	400.0	406.0
Limestone	2.5	406.0	408.5
Shale, dark	6.0	408.5	414.5
Shale, gray	7.5	414.5	422.0

(continued)

COMPANY Chicago, Wilmington, & Franklin C.C.  
 FARM Orient No. 2 Mine NO.  
 DATE DRILLED 1922 COUNTY NO. 267  
 AUTHORITY  
 ELEVATION 399'  
 LOCATION 900' SL, 2000' WL, Sec. 13, 7S-2E  
 COUNTY Franklin


13-7S-2E

	Thickness	Top	Bottom
Shale, gray w/ brown bands	35.0	422.0	457.0
Shale, gray	7.1	457.0	464.1
Coal, No. 6	9.0	464.1	473.1
Floor clay	1.9	473.1	475.0
Shale, gray	7.5	475.0	482.5
Shale, sy	11.2	482.5	493.7
Limestone	1.3	493.7	495.0
Shale, black	3.0	495.0	498.0
Shale, sy	.8	498.0	498.8
Shale, dark	1.0	498.8	499.8
Shale, gray	9.6	499.8	509.4
Coal	3.8	509.4	513.2
Floor clay	.8	513.2	514
			514

TD



## Log of Hoist Shaft - New Orient -

Elev. 399'

77+100<sup>th</sup>

Tough clay	15		15	
Sandy clay	28		43	
Quick sand	19		62	
clay	2		64	
clay and sand <i>mixt</i>	10		74	
Shale, sandy	23	5	97	5
SS	28	5	126	
shale, dark	12	5	138	50
Coal		33	138	83
Floor clay	5	17	144	
Shale, gray	13		157	
shale sy	99	5	256	5
shale gray	19	5	276	
SS	9		285	
sh sy	15		300	
sh dark	6	57	306	57
Coal		84	307	42
Floor clay	3	58	311	
sh sy	26		337	
sh dark	5	5	242	50
Coal		17	242	67
Floor clay	1	33	344	
Limestone	5	5	349	50
shale dark	6	67	356	17
Coal	2	83	359	
Floor clay		50	359	50
shale sy	40	5	400	
shale dk	6		406	
Limestone	2	5	408	5
sh dark	6		414	5
sh gray	7	5	422	
sh gray w. brown bands	35		457	
sh gray	7	08	464	08
Coal	9	-	473	08
Floor clay	1	92	475	
sh gray	7	50	482	50
sh sy	11	17	493	67
limestone	1	33	495	
sh blk	8		498	
sh sy		75	498	75
sh <i>blk</i> (cross)	1		499	75



The beds below the coal are best exposed in the grade south of main shaft, at point A on mine map. Hence the coal floor has been taken up to a depth of 110 inches showing the following section



1 div = 2 feet  
Coal left for roof  
main bed

BB.

15" Floor clay, *Stigmaria* impressions.

45" clay, gray, with calc. nodules in increasing abundance downward the basally 3" being essentially a nodules  
→ 2" carb. band - bony  
→ 48" sy shale well bedded

Note - The limestone nodules of this clay section, upon examination, show no trace of fossils. The masses are dense, slightly earthy, reddish brown color and range from  $\frac{1}{2}$ " to over 5" diameter. Pyrite in grains and stringers is abt.

HCC  
New Orient

Franklin 1113.31



Operator, *CW & F* Date *10-19-38*  
 Mine, *Orient #2* Sec. T. R.  
 Location in mine, *16 E off Main N.*

GRAPHIC SECTION		DESCRIPTION OF SECTION (AT POINT SAMPLED)	
In.	No.	No. (Note character and thickness of roof)	Inches
		<p><i>Samples of bands</i>  <i>Vitrain, Clarain, &amp; Fusain</i></p>	
		<p>(Note character and thickness of floor)                      Total thickness of coal</p>	
		Condition,	Time, hr. min.
		Wt. Gross, lbs.	Net, lbs.
		What Nos. shipped by Co.?	
		Excluded from sample: No.	
		Sample represents	in. tons.
		Impurities? How do they occur?	

(1 division = 3 in.)

Sample No. Can No. Lab. No.

Collector, *L.C. McCabe, G.R. Yohee* Coal: Survey No.   
 Mine, *Orient No. 2* Co. *Franklin* Index No. *6*

Freeman Coal Mining Corp.  
Orient #2

400' E of 33N, 25E N.

Roof-Coal - about 15"

Thickness (inches)

Coarse clarain with vitrain band up to 1" thick.	4 3/4	0	-	4 3/4
Shale, gray (removed)	3/4	4 3/4	-	5 1/2
Coarse clarain with vitrain bands up to 1"	16 3/4	5 1/2	-	22 1/4
Fusain band	1/16	22 1/4	-	22 5/16
Medium clarain	11/16	22 5/16	-	23
Fusain	1/16	23	-	23 1/16
Medium clarain	4 15/16	23 1/16	-	28
Fusain	1/16	28	-	28 1/16
Medium clarain, vertical cleating filled with pyrite.	10 7/16	28 1/16	-	38 1/2
Shale band (removed)	2 3/4	38 1/2	-	41 1/4
Fine clarain	10 1/4	41 1/4	-	51 1/2
Pyrite band	1/16	51 1/2	-	51 9/16
Fine clarain	3 1/4	51 9/16	-	54 13/16
Fusain, mineralized	1/2	54 13/16	-	55 5/16
Fine clarain, vitrain bands 1/16" clarain between bands dull.	10 1/2	55 5/16	-	65 13/16

Harrison &

By Berger Date 8-5-58

Quad. Part.

County Franklin

h	Sec. 13
g	N.
f	T. 7
e	S.
d	E.
c	R. 2
b	W.
a	Index No.
8 7 6 5 4 3 2 1	

Freeman Coal Mining Corp.  
Orient #2

(p. 2)

✓ 400' E of 33N, 25E N.

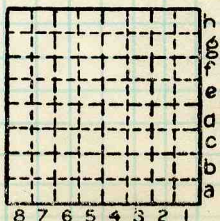
~~Roof Coal - about 15"~~

		↙ Thickness (inches)
Fusain band, non-mineralized	3/4	65 13/16 - 66 9/16
Clarain	1 1/2	66 9/16 - 68 1/16
Fusain	1/16	68 1/16 - 68 1/8
Fine clarain	2 1/4	68 1/8 - 70 3/8
Shale, blue band (removed)	1 3/4	70 3/8 - 72 1/8
Medium clarain	15	72 1/8 - 87 1/8
Shale with pyrite	1/2	87 1/8 - 87 5/8
Medium clarain, bottom of coal	6	87 5/8 - 93 5/8

Total thickness measured 7' 9 5/8"

Floor - Fine clay

Harrison &  
By Berger Date 8-5-58  
Quad. \_\_\_\_\_ Part \_\_\_\_\_  
County Franklin



Sec. 13  
N.  
T. 7  
S.  
R. 2  
E.  
W.  
Index No.

Freeman Coal Mining Corp.  
Orient #2

*Channel Sample*

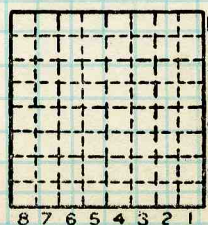
I entry W 33N, 23E N 300' off 33N.

Roof-Coal - 19" left for roof.

*C 10635-1  
CP1704*

		Thickness (inches)	
Coarse clarain	10	0	- 10
Fusain	1/8	10	- 10 1/8
Vitrain	1/8	10 1/8	- 10 1/4
Fusain	1/8	10 1/4	- 10 3/8
Coarse clarain	14	10 3/8	- 24 3/8
Fusain	1/16	24 3/8	- 24 7/16
Med. clarain	2	24 7/16	- 26 7/16
Fusain	1/16	26 7/16	- 26 1/2
Med. clarain, vertical cleats filled with pyrite	4	26 1/2	- 30 1/2
Fusain, mineralized	3/4	30 1/2	- 31 1/4
Fine clarain	1 1/2	31 1/4	- 32 3/4
Fusain	1/4	32 3/4	- 33
Fine clarain	4 1/4	33	- 37 1/4
Fusain	3/4	37 1/4	- 38
Fine clarain	5	38	- 43
Fine clarain with vitrain bands from 1/8 to 1/16" and very black.			
Clarain generally dull.	10	43	- 53
Med. clarain	10 1/4	53	- 63 1/4

Harrison & Berger  
By \_\_\_\_\_ Date 8-5-58  
Quad. \_\_\_\_\_ Part \_\_\_\_\_  
County Franklin



Sec. 13  
N. 7  
S. \_\_\_\_\_  
E. \_\_\_\_\_  
R. 2  
W. \_\_\_\_\_  
Index No.





Freeman Coal Mining Corp.  
Orient #2

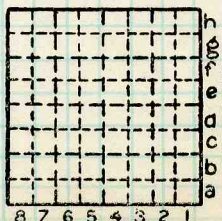
(p. 2)

I entry W 33N, 23E N 300' off 33N.  
Roof-Coal - 19" left for roof.

		<u>Thickness</u> (inches)
Shale, blue band (removed)	1	63 1/4 - 64 1/4
Fine, medium clarain with calcite filled vertical cleats	16	64 1/4 - 80 1/4
Fusain band, mineralized	1/8	80 1/4 - 80 3/8
Medium clarain	11	80 3/8 - 91 3/8
Total thickness		7' 7 3/8"

Floor - Fine clay

By Harrison & Berger Date 8-5-58  
 Quad. \_\_\_\_\_ Part \_\_\_\_\_  
 County Franklin



Sec. 13  
 T. 7 N.  
 R. 2 E.  
 W.  
 Index No.



Freeman Coal Mining Corp.  
 #6 coal - Orient #2 mine (~~8-5-58~~)  
 Channel Sample  
 E entry off 33 N, 25 EN  
 (E is opposite I)

described by Harrison  
 recorded by Berger

Roof - Coal 19" ± Thickness (Inches)

Coarse Clarain	3 <sup>3</sup> / <sub>4</sub>	0 - 3 <sup>3</sup> / <sub>4</sub>
Fusain, seems to be mineral free	<sup>1</sup> / <sub>4</sub>	3 <sup>3</sup> / <sub>4</sub> - 4
Fine - Med. Clarain, with pyrite filled cleats and fracture	1 <sup>1</sup> / <sub>4</sub>	4 - 18
Clarain	1 <sup>1</sup> / <sub>4</sub>	18 - 19 <sup>1</sup> / <sub>4</sub>
Fusain	<sup>1</sup> / <sub>6</sub>	19 <sup>1</sup> / <sub>4</sub> - 19 <sup>1</sup> / <sub>6</sub>
Fine clarain	1 <sup>1</sup> / <sub>2</sub>	19 <sup>5</sup> / <sub>16</sub> - 20 <sup>13</sup> / <sub>16</sub>
Fusain, mineralized to some extent	1 <sup>1</sup> / <sub>4</sub>	20 <sup>13</sup> / <sub>16</sub> - 22 <sup>1</sup> / <sub>6</sub>
Med. banded Clarain	3	22 <sup>1</sup> / <sub>6</sub> - 25 <sup>1</sup> / <sub>6</sub>
Sh., bony coal (Removed)	<sup>3</sup> / <sub>4</sub>	25 <sup>1</sup> / <sub>6</sub> - 25 <sup>13</sup> / <sub>16</sub>
Coarse clarain	3 <sup>1</sup> / <sub>4</sub>	25 <sup>13</sup> / <sub>16</sub> - 29 <sup>1</sup> / <sub>6</sub>
Fusain	<sup>1</sup> / <sub>4</sub>	29 <sup>1</sup> / <sub>6</sub> - 29 <sup>5</sup> / <sub>16</sub>
Med Clarain	8 <sup>3</sup> / <sub>4</sub>	29 <sup>5</sup> / <sub>16</sub> - 38 <sup>1</sup> / <sub>6</sub>
Fusain, fairly soft	<sup>1</sup> / <sub>2</sub>	38 <sup>1</sup> / <sub>6</sub> - 38 <sup>9</sup> / <sub>16</sub>
Med Clarain	1 <sup>1</sup> / <sub>2</sub>	38 <sup>9</sup> / <sub>16</sub> - 39 <sup>9</sup> / <sub>16</sub>
Fusain	<sup>3</sup> / <sub>8</sub>	39 <sup>9</sup> / <sub>16</sub> - 39 <sup>15</sup> / <sub>16</sub>



	Thickness	
Med Clarain	1 3/4	39 15/16 - 41 1/16
Fusain, mineralized	1/2"	41 1/16 - 42 3/16
Med Clarain shale	5 1/2	42 3/16 - 47 1/16
Med Clarain	1 1/4	47 1/16 - 47 15/16
Med Clarain	6	47 15/16 - 53 15/16
Dull Clarain, vitrain bands very pronounced	4 3/4	53 15/16 - 58 1/16
Fusain	1/4	58 1/16 - 58 15/16
Clarain	2"	58 15/16 - 60 15/16
Fusain band	1/16	60 15/16 - 61
Fine Clarain	4 3/4	61 - 65 3/4
Sh. blue band, pyritized (Removed)	1"	65 3/4 - 66
Med-Coarse Clarain vitrain banding to 1/2 inch	14"	66 - 80
Pyrite band (Removed)	1/4	80 - 80 1/4
Fine to med Clarain	14 1/2	80 1/4 - 94 3/4
Bottom	Free clay	7' 10 3/4"

Co. No. \_\_\_\_\_ County \_\_\_\_\_ Sec. \_\_\_\_\_ T. \_\_\_\_\_ R. \_\_\_\_\_ T.&R. \_\_\_\_\_

Company C. W. & F. No. \_\_\_\_\_ Farm Orient #2 No. \_\_\_\_\_

Elev. \_\_\_\_\_ of \_\_\_\_\_ by \_\_\_\_\_ Total depth \_\_\_\_\_ Year 1924  
~~date.~~ ~~22~~

For M Method SH Result S Type log \_\_\_\_\_ Core desc. \_\_\_\_\_

Stripped \_\_\_\_\_ Analysis \_\_\_\_\_ Confd. \_\_\_\_\_ Publ. \_\_\_\_\_

Location SE SW 900' N., 700' W., SE/COR.

Core logged \_\_\_\_\_ by \_\_\_\_\_

Remarks: S-4;

KEY BEDS

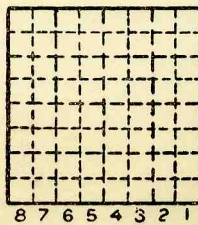
Code	Name	Depth	Thk.	Elev.
<u>6</u>		<u>500'</u>	<u>9'2"</u>	
<u>6</u>		<u>491'</u>	<u>9'2"</u>	<u>Table 13 1958 Coal Rept.</u>

Hart-Williams CC ~~1917~~ } these refer to a mine in  
Benton CC, #2 - 1917 } 6S-3E-30. - map 11/59  
Taylor M. Co.  
1922 - C. W. & F. CC

Correlations by \_\_\_\_\_ basis \_\_\_\_\_

Date \_\_\_\_\_ Quad. \_\_\_\_\_

County Franklin Co. No. 267



Sec. 1386  
 T. 7 S.  
 R. 2 W.