

FIELD NOTES

Illinois State Geological Survey

(1530.4b)

September 9, 1927

Top Fisher Mine

- Yellow clay
- Hard pan
- 1' sand
- clay
- 14" limestone, gray
- 16' clay, white
- 5' 10" limestone
- 2'- 3' slate
- 52" average coal No. 6 ?
- 1½'- 4' shale gray
- rock

(1530.7b)

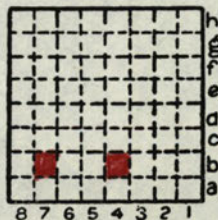
Bottom coal - 1½'+ - No. 6?

- 8" shale, gray
 - 9' limestone
 - 4' shale
 - 1' limestone, brown
- Muncie Mine shaft 45' deep.

By K.W. Stott Date 1927

Quadrangle Jacksonville

County Morgan Sec. 30 T. 13N R. 10W



FIELD NOTES

Illinois State Geological Survey

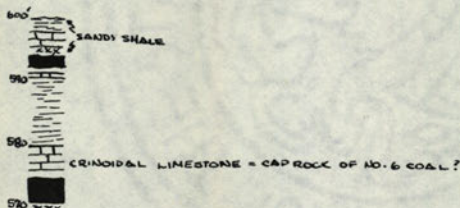
See maps nos. 4107 c3.5-5, d5.1-185, d5.1-186, d5.1-187
c3.5-6

(1530.4b)

September 9, 1927

Slope mine in tributary of Coal Creek. Entry goes
60' S. and another 900'(?!!) N. To S. dips S. and
E.

Fisher Mine.



John Muncie Mine: (=Wagstaff mine in Collingwood's
report):

4' coal 45' shaft

"blue bank" 18" above floor

Lunch at Manchester

Visited Coal Hollow NE. of Aalsey.

By A.H. Bell Date 1927

Quadrangle Winchester

County Morgan Sec. 30 T. 13N R. 10W

