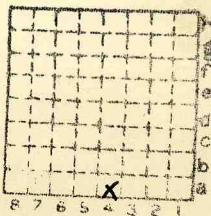




Form 180

McNEAL & FINK



Secs	17
T ₁	31 ² / ₅
R.	3 ^{B.} / _{W.}
Index No.	

✓ Mine index 2590



Mine originally operated by: (1)

Date 1923

Mc NEIL & FINK
KANGLEY

Original name or number:

Illinois Coal Report _____ p. _____

LATER OPERATORS

Date	Operator	Name or No.
2		J. C. Quade
3		
4		
5		
6		
7		
8		
9		
10		
11		
12		
13		
14		

* Also owners

See ownership sheet

Railroad, Wagon, Idle, Abandoned

IDENTIFICATION

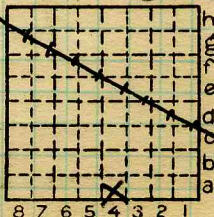
County No.

Coal No.

Quad. 80

Part 5

County **LASALLE**



SW SE

Sec. 17

T. 31 N.

R. 3 E.

Index No.

2817.

COAL MINE OPERATOR