



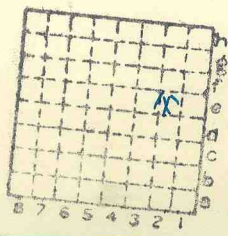
Form 180

Colow. Coll.
Freeburg mine

237

R F

HERRIN



Sec. 30

T. 1 N.
S.

R. 7 E.
W.

Index No.

Mine Index 3590



LOCATION AND ELEVATION

Location: E side I.C. side side Highway No. R. R. R. R.

on top. map 246 Location sheet 13-87-41c

Elevation: Method, 1. Est. () ft. 2. Inst. (kind Plane table) 5135 ft. By W.B. Roe 2-26-30 Data sheet

DEPTH

Authority To coal ft. Authority Jdden Rail to rail 130 ft. Top of coal above rail. (Est. Rule) 8 ft. To coal 122 ft.

ALTITUDE OF TOP OF COAL

By estimated data By instrumental data 391.5 ft.

Thickness

Max. in. Min. in. Aver. 96 in.

GEOLOGICAL DATA

Mine notes, date 1908

Coop No. Pyr. inv. Coal Ash inv.

CHEMICAL DATA

Table with 4 columns: Analyses Face, U. I., B. M., Others. Rows include Car, Org. Sulf, Ash fusion, Ash anal.

Classification

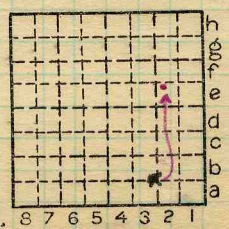
Misc. tests: Coking. Cleaning Boiler

Published descriptions:--

Railroad, Wagon, Idle, Abandoned

IDENTIFICATION

County No. 237 Coal No. 6 Part 4 Quad. New Athens County



Sec. 30 T. 1 S. R. 7 W. Index No. 1130E2

COAL MINE LOCATION AND DATA

Abd



1130

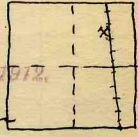
COAL MINE NOTES.

COUNTY *St. Clair.* TOWN _____ MAP No. *4430*
 T. *1 S.* R. *7 W.* S. *30 NE 1/4*

OPERATOR *Sun Light Coal Co.*
 OFFICE *Miss Tuley Bldg St Louis.*
 MINE *Freeburg.*

COUNTY

USED IN COOP. REPT. 1912.



TIPPLE *Wood.*
 ENGINES *Hoist Eagle Foundry. See and notation*

BOILERS *cylinders 12" x 24"*

DRUM *Wood 6' dia.*

SHAFT *5 1/2 x 12'* CAGE *H. H. self. dump.*

HAULAGE *Mule*
 CARS *Wood 1 1/2 ton.*

VENTILATION *Fan 9' blades 4'*

DRAINAGE *Very little water.*

SPRINKLING

WORKING SYSTEM *Room & Pillar.*

MINING METHODS

*Hand Mined. Shot on solid.
 Powder blupout single F.*

SIZE OF ENTRIES—MAIN *12 x 20'* CROSS *20'* ROOM *30'* NECK *square.*

SIZE OF PILLARS—MAIN CROSS ROOM

SHAFT CHAIN BARRIER

AMOUNT OF TIMBERING *considerable.* SIZE

PROPORTION OF COAL UTILIZED

AMOUNT AND CHARACTER OF WASTE

ACREAGE OF COAL MINED

ACREAGE OF COAL REMAINING

PROPORTION OF MINE RUN AND SCREENED COAL

METHOD OF SIZING *Shaker screen*

RESCREENED

SIZES *3/4", 1", 1 1/2", 2", 6" round.*

1/4", 5/8", 1 1/4", 1 1/2"

PER CENT *300% screenings.*

PROPORTION AND SIZE OF WASHED COAL

DAILY OUTPUT *250 tons.*

GEN'L COAL REPT. 237

UTILIZATION *Steam.*

MARKETS

1130

FREIGHT RATES

1430

SELLING PRICES AT MINE

COAL LAND OWNED LEASED HELD IN FEE

COST OF LAND OWNED LEASED HELD IN FEE

ADDITIONAL NOTES *3, 50 ton bins.*



COAL MINE NOTES.
CONTINUED.

1130

OPERATOR *Sunlight Coal Co.* MINE
 ENTRANCE *Shaft* NAME OF COAL BED #6
 ELEVATION *510 Topog.* THICKNESS OF COAL
 DEPTH TO FLOOR *130* MAX. MIN. AV. *96"*
 ALTITUDE OF COAL *Top. 388.*
 LOCATION OF SECTION

USED IN COOP. REPT. 1912.

No.	SECTION.	In.
1	<i>Black smooth Coal</i>	<i>18" to 22"</i>
2	<i>Sulphur + clay</i>	<i>1/8"</i>
3	<i>9 inch Coal</i>	<i>9" to 11"</i>
4	<i>Sulphur + clay</i>	<i>1/8"</i>
5	<i>Drift Coal</i>	<i>20"</i>
6	<i>Sulphur + clay</i>	<i>1/8" to 1/4"</i>
7	<i>Block Coal</i>	<i>12"</i>
8	<i>Blue Band</i>	<i>1/2" to 2"</i>
9	<i>Bottom Coal</i>	<i>18" to 36"</i>
10		
11		
12		
	Tape	Total

COUNTY

SECTION

SAMPLE No.
 CAN No.
 CONDITION *18" to 22"*
 GROSS WEIGHT *20"*
 TIME EXPOSED *1/8" to 1/4"*
 NOT SHIPPED *1/2" to 2"*
 NOT INCLUDED *18" to 36"*



PHYSICAL PROPERTIES BY NUMBERS

*Blue Band from 20" to 36" from floor.
 Some sulphur scattered thru coal.*

ROOF *Lst Shale varying in thickness 3' to 4' roof rolls.
 Ls sometimes on roof. Concretions in roof. 10x3x2 1/2*
 FLOOR *fire clay 3' to 4'* } Largest Concretion

DIP *To south.*

FAULTS, ETC. *Some small faults. throw from 6" to 2'*

GAS

COLLECTOR *Jon Cadden*

REFERENCE *MB 138 P. 66*

DATE *1130*