

~~See active shipping book.~~

Mine map: 4103.531
25.1-28

350'N }
240'E } SW/c SW SW

R -F

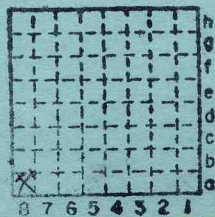
HERRIN

Mid-Continent Coal Corp.
Green Diamond Mine

L-87 County NO. 1245

Mine index 856

ST. CLAIR County



Sec. 16
T. 3 N.
R. 6 E.
Index No. W.



Mine originally operated by: (1)

Mid-Centriant Coal Corp.

Date

1948

Original name or number: Green Diamond
Illinois Coal Report 1948 p. 58

LATER OPERATORS

Date

Operator

Name or No.

1962

2 Midland Electric Coal Corp. Green Diamond

3 1965 Midland Electric Coal Corp. "Green Diamond"

4
5

6

7

8

9

10

11

opened 11-9-48

12

77' To coal

13

Sec. 16. T3S R6W

14

350' N 240' E of SW corner SW SW (1948)

*Also owners

#See ownership sheet

Railroad, Wagon, Strip, Idle, Abandoned

SLOPE

IDENTIFICATION

County No.

1245

Coal No.

6

Coal Report No.

L-87

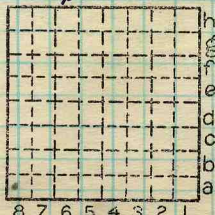
Quad.

(1948)

7' 0"

County

St. Clair



Sec. 16

T.

N. 3 S.

R.

E. 6 W.

Index No.

171698

COAL MINE OPERATOR



(Sheets) COAL PRODUCTION (Sheet)

Period				Tons	
Mo.	Day	Year	Mo.	Day	Year
Nov.	Shipping	Dec.	1948		
			1949		
			50		
			51		
			52		
			53		
			1954		
			1955		
			1956		
	Shipping		1957		
	"		1958		
	"		1959		
	"		1960		
	"		1961		
	"		1962		
	Shipping		1963		
			1964		
			1965		
			1966		

26 913
 153 411
 527 872
 641 958
 578 842
 600 046
 541 040
 745 138
 864 161
 727 399
 823 966
 917 139
 936 468
 822 111
 968 362
 944 734
 1 121 772
 1 128 315
 256 898

SUMMARIES

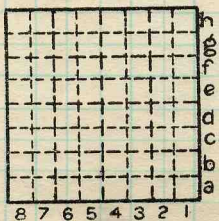
No.	to	No.

Railroad, Wagon, Strip, Idle, Abandoned

IDENTIFICATION

County No. 1245
 Coal Report No. L-87
 Quad.
 County St. Clair

Coal No. 6



Sec. 16
 T. 3 N.
 R. 6 S.
 Index No. W.



ILLINOIS GEOLOGICAL SURVEY, URBANA

Midland Electric Coal Co., Green Diamond
(formerly Mid-Continent Coal Corp.)

Floyd Macke, Acting Supt.
George Park, Mine Manager

3 conventional trackless units working in E & N.
Belt haulage - jeeps for man-trip and supplies.
Normal production about 3700 T/day.

Roof bolts with header blocks in 3' center,
usually 5' bolts.

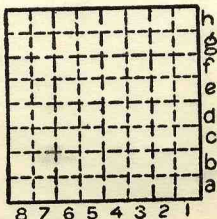
Local rolls, reported regional dip to east.

Floyd Macke
Midland Electric Coal Corp.
Green Diamond Mine
Marissa

By GRE & SG Date 7-25-62

Quad..... Part.....

County St. Clair



Sec. 16

T.	N.
3	s.
R.	E.
6	w.



25 July 62
Green Diamond Mine

Mid Continent Coal

Floyd Macke, Act. Supt.

George ~~Davis~~^{Park}, Mine Mgr.

Sampled by Eadie & Cartner

3: conventional trackless units working in E. & N. Belt
Belt Machine - Seeps for maintenance
and Supplies - Normal production
about 3700 T/day

Roof bolts with header blocks in 3' center, usually 5' bolts
local rolls, reported regional dip to east

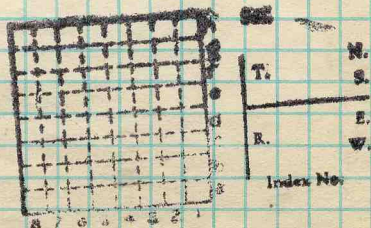
Floyd Macke

Midland Elec Coal Corp.

Green Diamond Mine

Marissa, Ill.

COUNTY No.



ILLINOIS GEOLOGICAL SURVEY, URBANA

Midland Electric Coal Co., Green Diamond

No. 6 Coal

Sampled July 25, 1962 Eadie & Gartner

Arrangements with Floyd Macke, Acting Supt.

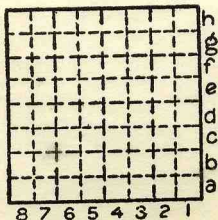
Accompanied by George Park, Mine Manager
(see next page)

Sample # 1: Center point of sec. 15, 3S-6W 3 pm

Sample # 2: 1490'S, 1750'E, NW corner
sec. 15, 3S-6W

Sample # 3: 680'N, 270'E W $\frac{1}{4}$ corner
sec. 16, 3S - 6W

By... GRE Date. 7-25-62
Quad..... Part.....
County... St. Clair



Sec. 16

T.	N.
3	S.
R.	E.
6	W.

ILLINOIS GEOLOGICAL SURVEY, URBANA

Midland Electric Coal Co. - Green Diamond mine

Sample # 1

Key entry, Main east.

center point Sec. 15, T. 3S, R. 6W

Contact zone of roof shale and No. 6 Coal very irregular, some bony coal, layers of vitrain, layers of pyrite.

Total thickness 5'10", No. 6 Coal

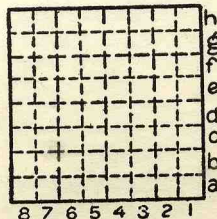
<u>Feet & Inches</u>	<u>Description</u>
0 - 8 $\frac{1}{2}$ "	Thin banded clarain with occasional pyrite nodule, fusain bands to 1/16"
8 $\frac{1}{2}$ - 8 3/4"	Pyrite & Fusain band
8 3/4 - 2'11"	Clarain, thin banded, occasional layer of pyrite to 3/16", vitrain bands to 3/16", same for fusain
2'11" - 2'11 3/16"	Shale, pyrite
2'11 3/16 - 4'5"	Clarain, normally bright banded, some calcite in cleavage, occasional pyrite layer to 3/16"
* 4'5" - 4'6 $\frac{1}{2}$ "	Shale, some pyrite, probably blue band
4'6 $\frac{1}{2}$ " - 5'10"	Clarain, normally bright banded, calcite in cleavage, also some pyrite in cleavage
5'10" -	Medium gray fireclay

* Deleted from sample

By Eadie & Gartner Date 7-25-82

Quad.....Part.....

County St. Clair.....



Sec. 15

T.	N.
	3 S.
R.	E.
	6 W.

Sampled 25 Jul 62 Eddie & Gartner

Arrangements with Floyd Macke,
Act'g Supt.
Accompanied by George Park,
Mine Manager

: (see next page)

Spl #1 Center Pt. of Sec 15
T 3 S, R 6 W, 3 PM

Spl #2 1490' S, 1750' E, NW Cor Sec 15,
T 3 S, R 6 W, 3 PM

Spl #3 680' N, 270' E W 1/4 Cor Sec 16.
T 3 S, R 6 W, 3 PM.

Wed. Jul 25th

V.P. Art Macke
Mine Mgr., George Park
Act'g Supt. Floyd Macke

P.O. Marissa

1961- 822, 111

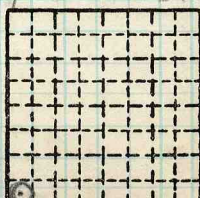
Slope- 77' to 7'0" coal

Mid-Continent Coal Corp., Green Diamond
6 Coal

By _____ Date _____

Quad. _____ Part _____

County St. Clair #1245



Sec. 16
N.
T. 3 S.
E.
R. 6 W.
Index No.
L-87



Midland Elec.

25 July 62

Green Diamond

Eadio & Gartner

Sample #1

Key Entry Main East.

Center point Sec 15 T35R6W

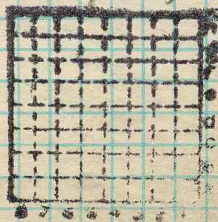
Contact zone of roof sh. + #6
 coal very irregular, some
 benz coal, layers of vitrain,
 layers of pyrite
 Total thickness 5'10", #6 coal

0-8 $\frac{1}{2}$ " thin banded clarain w/
 occasional pyrite nodules, fusain
 bands to $\frac{1}{16}$ "

8 $\frac{1}{2}$ "-8 $\frac{3}{4}$ " pyrite & fusain band

8 $\frac{3}{4}$ "-2'11" clarain, thin banded,
 occasional layer of pyrite to
 $\frac{3}{16}$ ", vitrain bands to $\frac{1}{16}$ ", same
 for fusain

COUNTY No.



T.

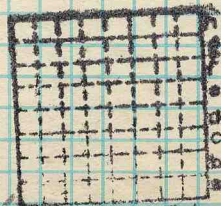
R.

Index No.



- 2' 11" - 2' 11 3/16" sh., pyrite
- 2' 11 3/16" - 4' 5" clear, sh., some calc. in cleav., occasional alpyrite layer to 3/16"
- * 4' 5" - 4' 6 1/2" sh., some pyrite, probably blue band
- 4' 6 1/2" - 5' 10" clear, sh., calc. in cleav., also some pyrite in cleav.
- 5' 10" - medium gray fine clay

COUNTY No.



Sec.
T.
R.
Index No.

* deleted from sample

ILLINOIS GEOLOGICAL SURVEY, URBANA

Midland Electric Coal Co. - Green Diamond Mine

Sample # 2

2 Key, 3rd north panel, Main East,
1490° S, 1750° E NW corner Sec. 15, T. 3S, R. 6W

Roof material-black shale with some pyrite, irregular contact zone.

Total Thickness 7'9", No. 6 Coal

Feet & Inches

Description

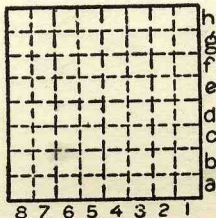
0 - 2'3½"	Clarain, normally bright banded, fusain bands 1/16" thick, contains pyrite lenses as much as 3/16" thick, some pyrite and calcite in cleavage planes
2'3½" - 2'3 3/4"	Mineralized fusain, some pyrite
2'3 3/4" - 3'8"	Normally bright banded
3'8" - 3'8 ¼"	Pyrite & shale
3'8 ¼" - 5'1"	Clarain, normally bright banded, contains lenses of pyrite 6" long, up to ¼" thick
* 5'1" - 5'2"	Shale band with pyrite, probably blue band
5'2" - 7'9"	Clarain, normally bright banded, occasional pyrite lenses

* Deleted from sample

By Eadie & Gartner Date 7-25-62

Quad. Part

County St. Clair



Sec. 15

T.	N.
3	S.
R.	E.
6	W.



Midland Elec. Co.

25 July '62

Green Diamond Mine

Sample #2

Eadie + Gartner

2 Key, 3rd north Panel, Main East
14905, 1750 E, NW Cor Sec 15 T35, R6W,Roof material black sh. w/ some pyrite
irregular contact zone

Total thickness 7'9" #6 coal

0-2'3 1/2" claram, nbb, fusain bands 1/6"

thick, contains pyrite lenses as much

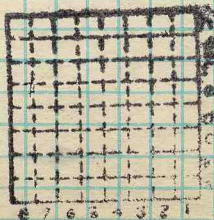
as 3/16" thick, some pyrite + calc.

in cleav. planes

2'3 1/2" - 2'3 3/4" mineralized fusain, some
pyrite

2'3 3/4" - 3'8" nbb.

3'8" - 3'8 1/4" pyrite + shale

3'8 1/4" - 5'1" claram, nbb, contains
lenses of pyrite 6" long, ^{up to 1/4"} thick* 5'1" - 5'2" sh. band w/ pyrite,
probably blue band

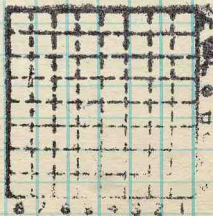
T. S. N.
R. W. E.
Index No.

* deleted from sample



5'2" - 7'9" claram nbb, occasional
pyrite lenses,

COUNTY No.



ILLINOIS GEOLOGICAL SURVEY, URBANA

Midland Electric Coal Co. - Green Diamond Mine

Sample # 3

4th N. entry

270° E, 680° N., W. 1/4 corner, Sec. 16-3S-6W

Estimated local dip about 30%

Total thickness 6'7", No. 6 Coal

Irregular contact zone with gray roof shale.

Coal face quite wet.

Inches & Feet

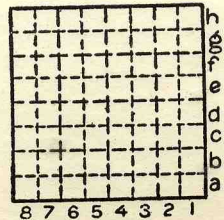
Description

0 - 2'1"	Clarain, medium bright banded, Calcite & pyrite in cleavage planes, occasional pyrite nodule, occasional fusain to 1/8" thick
2'1" - 2'1 1/2"	Mineralized fusain, variable thickness up to 1/2"
2'1 1/2" - 2'8"	Clarain, calcite & pyrite occasional pyrite nodule
* 2'8" - 2'9"	Pyrite zone, occasional vitrain smear, pyrite nodule
2'9" - 4'10"	Clarain, calcite & pyrite in cleavage, occasional pyrite lense up to 1/4" thick; occasional shale lense up to 3/16" thick
* 4'10" - 4'11"	Shale band, probably blue band

By Eadie & Gartner Date 7-25-62

Quad.....Part.....

County St. Clair



Secn 16

T.	N.
	3 S.
R.	E.
	6 W.

8 7 6 5 4 3 2 1

ILLINOIS GEOLOGICAL SURVEY, URBANA

Midland Electric Coal Co. - Green Diamond Mine cont

Inches & Feet

Description

4'11" - 6'7"

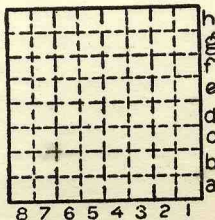
Clarain, calcite in cleavage,
some pyrite in cleavage,
normally bright banded.

* Deleted from sample

By Eadie & Gartner Date 7-25-62

Quad..... Part.....

County St. Clair



Sec. 16

T.	N.
	3 S.
R.	E.
	6 W.



Midland. Elec. Co. July 25, '62
Green Diamond Mine

Sample #3 Eddie & Gartner
4th N. entry 270' E 680' N
W 1/4 Cor Sec 16 T35 R6W
estimated local dip about 30%

Total thickness 6'7", #6 coal
~~irregular~~
irregular contact zone w/ gray
roof sh. coal face quite wet.

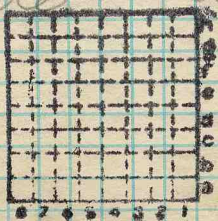
0 - 2'1" clarsin, med. kb., calc.
+ pyrite in cleav. planes, occasional
pyrite nodule, occasional fassin
* to 48" thick,

2'1" - 2'1 1/2" mineralized fassin, variable
thickness, up to 1/2"

2'1 1/2" - 2'8" clarsin, calc. + pyrite
occasional pyrite nodule

COUNTY No.

* 2'8" - 2'9" pyrite zone, occasional
vitron smear; pyrite nodule



Section
T.
R.
Index No.
N.
S.
E.
W.

87654321

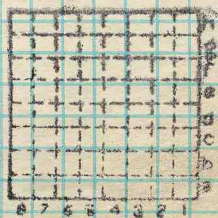


2'9" - 4'10" claram, calc. + pyrite in
 cleav. occasional pyrite lense
 up to 1/4" thick; occasional sh.
~~lense~~ lense up to 3/16" thick

* 4'10" - 4'11" sh. band, probably
 blue band

4'11" - 6'7" claram, calc. in cleav.
 some pyrite in cleav. hbk.

COUNTY No.



Sec.

T.

R.

Index No.

N.

S.

E.

W.