



Form 180 Blue

Roberts Coal Co.

L-103

*ISGS # 3782
mine index*

87654321

Sec: *11 B7*
F: *19*
R: *12*
Index No:



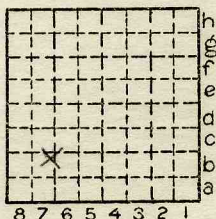
Location and Elevation Data

Location: Exact Approximate
Location by: Dept Mines & Minerals film
Date: no microfilm map Notebook No. Page.
Looseleaf ref.
Map files No.

Description of Location

Position in sec., 1/4 sec., 40 acres

feet from North line
feet from East line
feet from South line
feet from West line



Other description: L-103

Idle 1938 5'6" #7 coal

Farm.
No.
Company: Roberts Coal Co.
No.
County No.

Elevation.....ft.

By.....

Method: Level, transit, alidade, hand level

Elevation of.....

Height of point above ground.....

Date..... Notebook..... P.....

Looseleaf ref.....

Map files No.....

Description of item: (drill hole, mine, etc.) Strip mine

5'6" of #7 coal

LOCAL MINE

County Danville Index No. 1811 B7



Mine originally operated by: (1) Roberts Coal Co.

Date 1936 L-103

Original name or number:
Illinois Coal Report 1936 p.

LATER OPERATORS

Date	Operator	Name or No.
2		
3		
4		
5		
6		
7		
8		
9		
10		
11		
12		
13		
14		

* Also owners

#See ownership sheet

Railroad, Wagon, Idle, Abandoned Strip Mine

38

IDENTIFICATION

County No.

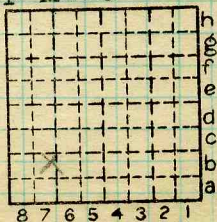
Coal No. 7



Part

Quad. Danville

County Vermilion



Sec. 11

19

N.

T.

R. 12

W.

Index No.

181187

COAL MINE OPERATOR

LOCAL MINE

COUNTY NO. 644



(Sheets) COAL PRODUCTION (Sheet)

Period						Tons
Mo.	Day	Year	Mo.	Day	Year	
					1935	54
					1936	170
					1937	50

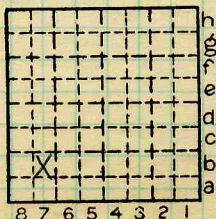
SUMMARIES			Tons
No.	to	No.	
			274

Railroad, Wagon, Idle, Abandoned

IDENTIFICATION

County No. Coal No. 7

Quad Danville Part
County Vermilion



Sec. 11
T. 19 N.
R. 12 W.
Index No. 1811 B7