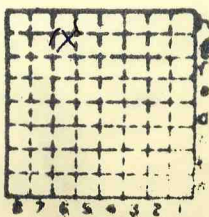


ISGS Intax No. 4058

Blackburn. CC.

494



| | |
|-----------|---|
| Sec. | 7 |
| T. | 9 |
| R. | 3 |
| Index No. | |

✓



Mine originally operated by: (1)

Blackburne Coal Co.

Date 1917

Original name or number:
Illinois Coal Report p.

LATER OPERATORS

| Date | Operator | Name or No. |
|------|----------|-------------|
| 2 | | |
| 3 | | |
| 4 | | |
| 5 | | |
| 6 | | |
| 7 | | |
| 8 | | |
| 9 | | |
| 10 | | |
| 11 | | |
| 12 | | |
| 13 | | |
| 14 | | |



* Also owners #See ownership sheet

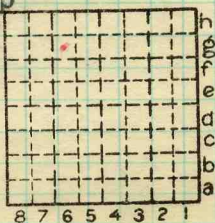
Railroad, Wagon, Idle, Abandoned **Strip**
Chi. & E.I. SHIPPING MINE

IDENTIFICATION

County No. #494 Coal No.

Quad. West Frankfort Part

County Williamson



Sec. 7
 T. 9 N.
 S.
 R. 3 E.
 W.
 Index No. 0707 g6

COAL MINE OPERATOR



LOCATION AND ELEVATION

Location: side R. R.
side R. R.
side Highway No.

on top. map Location sheet

Elevation: Method, 1. Est. () ft.
2. Inst. (kind) ft.

Table with columns: By, DEPTH, Data sheet. Rows include Authority To coal, Authority Rail to rail, Top of coal above rail, ALTITUDE OF TOP OF COAL, By estimated data, By instrumental data.

Thickness in. Min. in. Aver. in.

GEOLOGICAL DATA

Mine notes, date
Coop No. Pyr. inv. Coal Ash inv.

CHEMICAL DATA

Table with columns: Analyses Face, U. I., B. M., Others. Rows include Car, Org. Sulf, Ash fusion, Ash anal.

Classification

Misc. tests: Coking. Cleaning Boiler

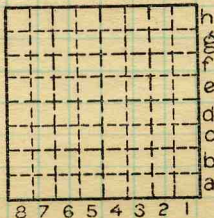
Published descriptions:—

Railroad, Wagon, Idle, Abandoned

IDENTIFICATION

County No. 494
Quad. W. Frankfort
County Williamson

Coal No.
Part



Sec. 7
T. 9 N. S.
R. 3 E. W.
Index No.

0707 g6

COAL MINE LOCATION AND DATA