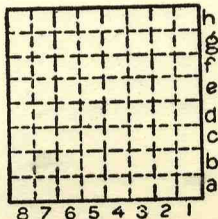


ILLINOIS GEOLOGICAL SURVEY, URBANA

From: Coal Report, 1882, p. 91

"Rundle & Goud's mine is one mile northeast of Pekin, on Tremont road, and has shaft divided for hoisting and furnace. The mine is supplied with iron track, in good condition, and miners get four cents a bushel for their coal at the bottom of the shaft."

By..... Date.....
Quad..... Part.....
County..... Tazewell.....



Sec.

T.	N.
	S.
R.	E.
	W.