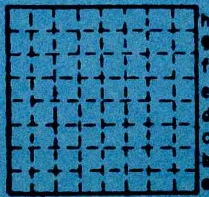




Form 180 Blue

Georgetown C.C., #2

L-234



Sec.

T.

R.

Index No.

N.

G.

E.

W.

0 7 6 5 4 3 2 1





Mine originally operated by: (1)

Date 1953 GEORGETOWN COAL Co. #2

GEORGETOWN

Original name or number:

Illinois Coal Report 1953 p. 56

LATER OPERATORS

Date	Operator	Name or No.
2		
3		
4		
5		
6		
7		
8		
9		
10		
11		
12		
13		
14		

\*Also owners

#See ownership sheet

Railroad, Wagon, Strip, Idle, Abandoned 1955

IDENTIFICATION

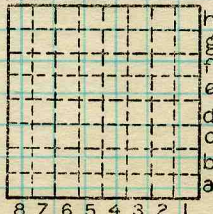
County No. \_\_\_\_\_

Coal No.

Coal Report No. L-234

Quad.

County VERMILLION



Sec.

T.

R.

Index No.

N.  
S.

E.  
W.

COAL MINE OPERATOR



*Georgetown Coal Co.*  
(Sheets)



COAL PRODUCTION

(Sheet )

Period						Tons	
Mo.	Day	Year	Mo.	Day	Year		
					1953	1	516
					1954	2	359
					1955	1	654
<i>idle after April</i>							

SUMMARIES

No. to No.

--	--	--	--	--	--	--	--

Railroad, Wagon, Strip, Idle, Abandoned 1955

Sec.

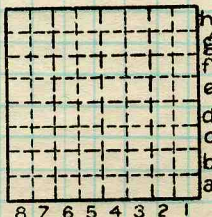
IDENTIFICATION

County No. \_\_\_\_\_ Coal No. \_\_\_\_\_

Coal Report No. L-234

Quad.

County VERMILLION



T. N.  
S. S.  
E. E.  
R. W.  
Index No.

COAL MINE—PRODUCTION

ILLINOIS GEOLOGICAL SURVEY, URBANA