

Mine map on file: 4103.W50
(Rushing Co) i 5. 1-30

580' N. line } SE SE
100' E. line }

- M.A.P. / 57 from mine map.

Pea Ridge Co

IS65 Index No. 4076

(Cox C. C.)

L-63

116

h
g
f
e
d
c
b
a
	8	7	6	5	4	3	2	1		

Sec. 25

T. 9 N.
R. 3 E.
W.

Index No.

0725B1



Mine originally operated by: (1) Rushing Coal Co.

Date

1936

1931

Original name or number:

Illinois Coal Report 1936 p.

LATER OPERATORS

Date

Operator

Name or No.

2

3

4

5

6

7

8

9

10

11

12

13

14

580' N. line, 100' E. line, SE SE
- M.A.P. 157 from mine map.

*Also owners

#See ownership sheet

Railroad, Wagon, Strip, Idle, Abandoned

Slope Mine

IDENTIFICATION

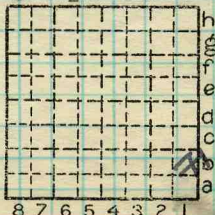
County No. 116

Coal No. 5

Coal Report No. L-63

Quad. Carbondale

County Williams



Sec. 25

T. 9 S.

R. B E.
W.

Index No.

25

07 B1

COAL MINE OPERATOR

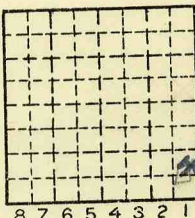
Location and Elevation Data

Location: Exact Approximate
(Approximate only if no trace of record of original exists)
Location by Dept Mines & Minerals
Date Notebook No. Page
Looseleaf ref.
Map files No.

Description of Location

Position in sec., 1/4 sec., 40 acres

580' feet from North line } SE, SE
100' feet from East line }
feet from South line
feet from West line



Sec. 25

T 9 N.
S.
R 3 E.
W.

1938

Other description: ~~SE/4~~
L-63
Farm
No.
Company Rushing Coal Co.

Way 3-1 #5 SE/4 SE/4 25-
95-3E. - inf.
from Roy Mc Cluskey
1957. No.
County No. 116

Elevation ft.

By

Method: Level, transit, alidade, hand level

Elevation of

Height of point above ground

Date Notebook P.

Looseleaf ref.

Map files No.

Description of item: (drill hole, mine, etc.) Slope Mine

60' to 4' 6" of #5 coal
76
County Williamson Quadrangle Carbondale Index No. 0925 B1

1939 55'