

FIELD NOTES

Illinois State Geological Survey

See maps nos. 4107 c3.5-5, d5.1-185, d5.1-186, d5.1-187  
c3.5-6

(1530.5g)

July 26, 1928

Stream cut bank, left side of stream (N.):

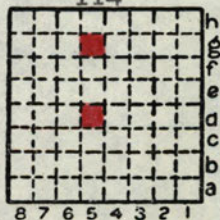
- 2' loess, leached
- 1' till, brown, cellular, leached
- 4' gumbotil or gumboey till, blue-grey, leached  
many siliceous pebbles
- 1'to 2' gumboey till, blue-grey with secondary calcite
- 10' till, brown, cellular, leached but with  
secondary calcite
- 20' till, brown and grey, calcareous, contains  
sand lens 3' x 1½' six feet from bottom.  
Lower 10' contains numerous limestone  
cobbles and boulders. Very bottom, at creek  
level, is silty, dark brown.

(1530.5d)

Section in old shaft, near center section 30.  
Estimated elevation 650'.

	<u>feet</u>	
Drift	15	15
Shales, red and green	58	73
Limestone	11	84
Clod	2	86
Limestone	8	94
Clod	2	96
Coal (No. 6)	4	100
Clay	3	103
Limestone (rock reported)	11	114

(From Collingwood's report)



By A.H. Bell Date 1928

Quadrangle Winchester

County Morgan Sec. 30 T 13N R 10W