



Mine originally operated by: (1)

Date 1883.

J. ROBERTSON
S. STREATOR

Original name or number:

Illinois Coal Report p.

LATER OPERATORS

Date	Operator	Name or No.
2		
3		
4		
5		
6		
7		
8		
9		
10		
11		
12		
13		
14		

* Also owners # See ownership sheet

Railroad, Wagon, Idle, Abandoned

IDENTIFICATION

County No.

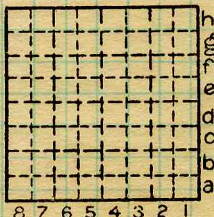
Coal No.

Quad.

Part

County

LASALLE



Sec.

T.

R.

Index No.

N.
S.
E.
W.

COAL MINE OPERATOR