

3948

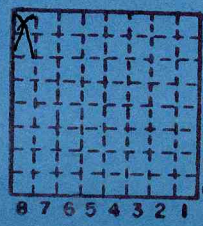
Abandoned:
January, 1971

Houston Coal Co.

Mine #2

S-55

Saline County



Sec. 34

R	9 S.
R	5 E.
Index No.	

Mine Index 898

Opened 2/68

Period				Tons	
Mo.	Day	Year	Mo.	Day	Year
		Opened			
			1968	17	391
			1969	18	093
			1970	17	119

SUMMARIES			Tons	
No.	to	No.		
			52	603

Railroad, Wagon, Strip, Idle, Abandoned

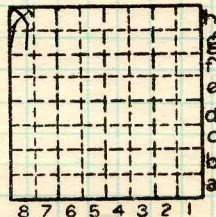
IDENTIFICATION

County No. _____ Coal No. 6

Coal Report No. S-55

Quad. _____

County Saline



Sec. 34

T. 9 S.

R. 5 E.

Index No. 888