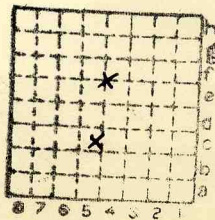


2407



Form 180

STAR C C H 5



Sec. 17

T. 31 N. 3

R. 7 E. W.

Index No.



Mine index 2591



Mine originally operated by: (1)

Date 1905

STAR COAL CO. #5
STREATOR.

Original name or number:

Aver #17

Illinois Coal Report p.

LATER OPERATORS

Date	Operator	Name or No.
2		
3		
4		
5		
6		
7		
8		
9		
10		
11		
12		
13		
14		

* Also owners # See ownership sheet

Railroad, Wagon, Idle, Abandoned

IDENTIFICATION

County No.

Coal No.

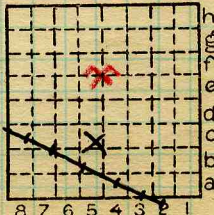
Quad.

80

Part 5

County

LASALLE.



Sec. 17

T. 31 N.

R. 3 E.

Index No.

2817

COAL MINE OPERATOR