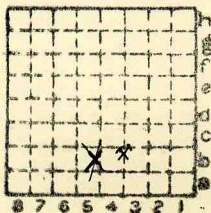




Form 180

R. V. SWART OUT

Location is B34



Sec. 35

T. 31 ~~2~~

R. 3 ~~W.~~

Index No. ✓

✓ mine index 2622



Mine originally operated by: (1)

Date 1897

R.V. SWARTOUT
STREATOR

Original name or number:

Illinois Coal Report p.

LATER OPERATORS

Date	Operator	Name or No.
2		
3		
4		
5		
6		
7		
8		
9		
10		
11		
12		
13		
14		

But see Renz
compilation which
was mine in SE of SW
AD 88

* Also owners

See ownership sheet

Railroad, Wagon, Idle, Abandoned

IDENTIFICATION

County No.

Coal No.

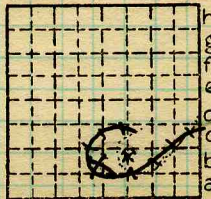
Quad.

80

Part 5

County

LASALLE



Sec. 35

T. 31 N. S.

R. 3 E. W.

Index No.

2835

COAL MINE OPERATOR

Location is (B34) by
picking above point
relative to the real location
of the R.R. spur P.D. 69