



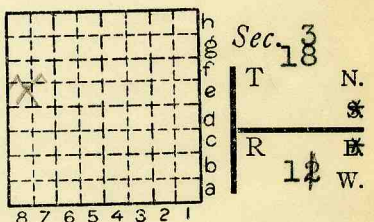
Location and Elevation Data

Location: Exact Approximate
(Approximate only if no trace of record of original exists)
Location by Dept Mines & Minerals
Date Notebook No. Page
Looseleaf ref.
Map files No.

Description of Location

Position in sec., 1/4 sec., 40 acres

feet from North line
feet from East line
feet from South line
feet from West line



Other description: L-59

Twp. 11

Farm
No.
Company Scarce Bros Coal Co.
No.
County No.

Elevation ft.

By

Method: Level, transit, alidade, hand level

Elevation of

Height of point above ground

Date Notebook P.

Looseleaf ref.

Map files No.

Description of item: (drill hole, mine, etc.)

County Vermilion Quadrangle Danville Index No. 2303 E 8



Mine originally operated by: (1) ~~Scarce Bros Coal Co.~~

Date 1939

Talbert & Scarce

Original name or number:
Illinois Coal Report 1937 p.

LATER OPERATORS

Date	Operator	Name or No.
2 <u>1934</u>	<u>C.C.</u> <u>Talbot & Scarce C.C.</u>	
3 <u>1936</u>	<u>Scarce Bros.</u>	# 1
3 <u>1937</u>		
4		
5		
6		
7		
8		
9		
10		
11		
12		
13		
14		

*Also owners

#See ownership sheet

Railroad, Wagon, Strip, Idle, Abandoned

38

IDENTIFICATION

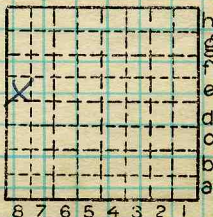
County No. _____

Coal No.

Coal Report No. L-59

Quad. Danville

County vermilion



Sec. 3

T. 18 N. *

R. 12 W. ?

Index No. 2303 E8

COAL MINE OPERATOR

COUNTY NO. 44



(Sheets) COAL PRODUCTION (Sheet)

Period				Tons	
Mo.	Day	Year	Mo.	Day	Year
		1933			
		1934			
		1935			
		1936			
		1937			
					2 375
					1 400
					1 302
					1 022
					715

SUMMARIES

No. to No.

--	--	--	--	--	--

Railroad, Wagon, Strip, Idle, Abandoned

38

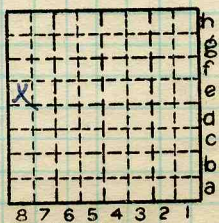
IDENTIFICATION

County No. _____ Coal No. _____

Coal Report No. L-59

Quad. Danville

County Vermilion



Sec. 3

T. 18 N.

R. 12 W.

Index No.

2303 E8

COAL MINE—PRODUCTION

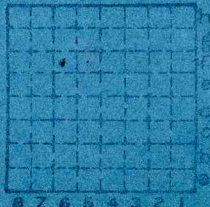
ILLINOIS GEOLOGICAL SURVEY, URBANA





Form 180 Blue

unidentified
Probably SCARCE BROS
See mine map
mine index 3667



Sec. 3 F6
T. 18 N
R. 11 W
Index No.



COAL MINING INVESTIGATIONS
COOPERATIVE AGREEMENT

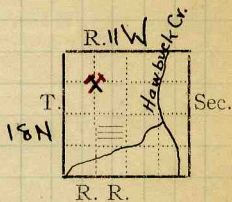
Mine Name or No.,
mile from

Operator, 191

Operator, 191

Entrance, Elev., ft. { above,
Depth to bottom coal, ft. Alt. below,

SURFACE DATA.



See (Folio 67,
Ge. Geol. Sheet

- A. Topography
- B. Surficial materials, (1) Character

- (2) Thickness,
- (3) Effect on mining and shaft-sinking, of former drainage lines, underground water strata, etc.

- C. Outcrops, (1) Character, See
- (2) Structure, See
- (3) Fossil horizons See
- Collection No., See
- (4) Evidences of subsidence, See
- D. Note collection of mine maps, drill records and shaft logs.

See drill record sheet.

- E. Notes on surrounding area,

See

Coal bed name: Local,

Collector,

Mine,

L.—SURFACE SHEET (Geol.)

COUNTY NO.

550

Co.

Vermilion

Survey

State No.

Co-op. No.

2403