

ILLINOIS GEOLOGICAL SURVEY, URBANA

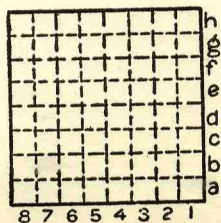
From: Coal Report, 1882, p. 91

"John Ledterman's mine is one mile southeast of Pekin, to which place the coal is, principally, sent to market. Furnace is used for ventilation. Miners are paid four and a half cents per bushel for mining, and for this, push out their coal to the cage, in eight-bushel cars, over a wooden track, for a distance of about four hundred yards. Track in poor condition. Shaft is so divided as to use one side for hoisting and one side for furnace."

By..... Date.....

Quad..... Part.....

County..... Tazewell.....



Sec.

T.	N.
R.	S.
	E.
	W.