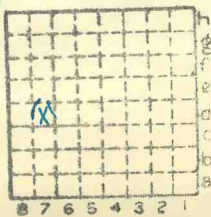


The history of this mine should be checked when review is made of all Carterville mines. Fix McBee cards when check is completed. J. D.

Slogo Coal Corp.
Slogo Mm

Carterville District CC
Slogo CC

414



Sec. 32

T. 8 S.

R. 3 E.

Index No.



Mine originally operated by: (1) Cartersville District Coal Co. Goddard Co.

Original name or number:
~~Illinois Coal Report~~ **Cody's N. B. 88, p. 6**

LATER OPERATORS

Date	Operator	Name or No.
2 1918	Slogo Coal Co.	Slogo
3 1921 <i>(NOT REPORTED IN C. RPTS)</i>	Lumaghi Coal Co.	
4 1922	Slogo Coal Corp.	
6 <i>1932</i>	<i>Lumaghi Coal Co. (field notes by Benson) W^{as} not have been operating at that time.</i>	<i>Slogo</i>
7		
8		
9		
10		
11		
12		
13		
14		

* Also owners #See ownership sheet

Railroad, Wagon, Idle, Abandoned *Page 1930*

SHIPPING MINE

IDENTIFICATION

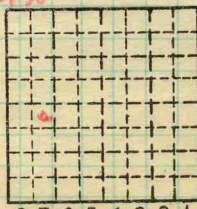
County No. **414**

Coal No.

Quad. **W. Frankfort**

Part

County **Williamson**



Sec. 32

T. 8 S. N.

R. 3 E. W.

Index No.

0232 7d

COAL MINE OPERATOR



LOCATION AND ELEVATION

Location: side R. R. side R. R. side Highway No. on top. map Location sheet

Elevation: Method, 1. Est. () ft. 2. Inst. (kind Plane Table) 495.9 ft.

By G.H.C. NB88 p.6 Data sheet

DEPTH

Authority To coal ft. Authority Rail to rail ft. Top of coal above rail. (Est. Rule) ft. To coal 142 ft.

ALTITUDE OF TOP OF COAL

By estimated data ft. By instrumental data 354 ft.

Thickness

Max. in. Min. in. Aver. 84 in.

GEOLOGICAL DATA

Mine notes, date Pyr. inv. Coal Ash inv. Coop No. 151

CHEMICAL DATA

Analyses Face U. I. B. M. Others Car U. I. B. M. Others Org. Sulf U. I. B. M. Others Ash fusion U. I. B. M. Others Ash anal. U. I. B. M. Others U. I. B. M. Others

Classification

Misc. tests: Coking. Cleaning Boiler

Published descriptions: MI 151 Bb2 a Sup.

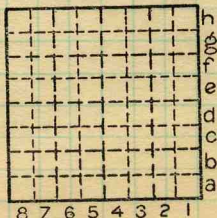
Railroad, Wagon, Idle, Abandoned

IDENTIFICATION

County No. 414 Coal No. 6

Quad. W. Frankfort County Williamson

Part



Sec. 32

T. 8 S. R. 3 E. W.

Index No. 0232 d7

COAL MINE LOCATION AND DATA

Town, ~~White Ash~~ *Marion*
 Local Authority, *Co -*

495.9

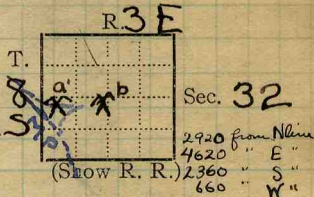
Surface alt., 472 ft.
 Depth to coal, 142 ft.
 Alt. top coal, 330-354 ft.
 Thickness: Av. 108.78 in.
 Max. in., Min. in.

Level: Auth., *Cady's N.B. 88 p. 6.*

Method,

R. R., *Mo P.*

Location: authority *correct location*
Cady's W. Frankfort map. S. 10
& From Co. 6/3/18
Co - 6/25/26



Operator *GEN'L COAL REPT* Mine Name or No.

414

19 *Slogo Coal Co.*

Slogo or Black Brier
Goddard.

Successor to *Cartersville District Coal Co. (White Ash)*

Date

Succeeded by *Lumaghi Coal Co - Slogo.*

Date

Succeeded by *Slogo Coal Corporation, Liberty Central Trust Bldg. Slogo*

Date

PRODUCTION.

U. S. No.

1924 *Av. Daily 1200 T.*
 1926 *Daily Cap 1200 Tons.*

11/17/26 - Marion Republican will start hoisting coal elec. 1.

1927 46 435
 1928 - Idle -

1930 #4

Geol. Notes? *no* Coop. No.

Coal secs? *no*

Analyses No.

4

Examined by

Ref.

Coal bed name: Local

Survey No.

County *Williamson*

Index No. *0232.24*

K.—ACTIVE SHIPPING OR LOCAL COAL MINE.

0232.44

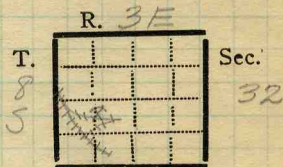
Town, *Marion*
 Local Authority, *P.H. Kelly M.Mgr.*

Surface alt., *480* ft.
 Depth to coal, *150* ft.
 Alt. top coal, *330* ft.
 Thickness: Av. *72* in.
 Max. *96* in., Min. in.

Level: Auth.,

Method, *Topog map.*

R. R., *Mo, Pac.*



Location: authority, *Mine map.*

(Show R. R.)

Operator

Mine Name or No.

19 *21 Slogo Coal Corp*

Slogo

Successor to

Date

Succeeded by

Date

Succeeded by

Date

Lumaghi Coal Co Slogo

PRODUCTION.

							U. S. No.
19			<i>1400 tons daily</i>				

Geol. Notes? *Yes*

Coop. No.

Coal secs? *3*

Analyses No.

Examined by *Netzaband*

Ref. *Loose leaf*

Coal bed name: Local

Survey No. *6*

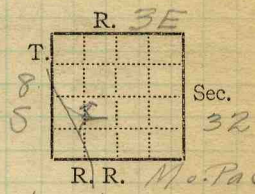
County *Williamson*

Index No. *0232.23*

K.-ACTIVE SHIPPING OR LOCAL COAL MINE.

Duplicate

Mine Name or No., *Slogo*
 3 1/2 mile N from Marion
 Operator, 1911 *Slogo Coal Corp.*
 Operator, 191



Entrance, *shaft* Elev., *480* ft. } above, *sea level*
 } below, *330*
 Depth to ~~surface~~ coal, *150* ft. Alt.

SURFACE DATA.

- A. Topography, *Rolling* See
 B. Surficial materials. (1) Character, *Till*
 (2) Thickness, *No information* (3) Effect on mining and shaft-sinking, of former drainage lines, underground water strata, etc. *No information.*

- C. Outcrops, (1) Character, See
 (2) Structure, See
 (3) Fossil horizons, See
 Collection No.,
 (4) Evidences of subsidence, See

D. Note collection of mine maps, drill records and shaft logs.
W.E. Willis Engr. Collinsville

See drill record sheet,

E. Notes on surrounding area,

See

Coal bed name: Local, Survey No. *6*

Collector, *Netzeband*
 Mine, *Slogo*

Co. *Williamson* Index No. *0232.23*

F. Thickness of rock above bed worked, *No information*

(1) Important variations,

See

G. Note presence of strata having important effect on mining,

Black slate - treacherous roof.

See

(1) Position, *Above coal*

(2) Character, *Hard, black, brittle shale*

(3) Persistence, *All over mine in patches.*

(4) Other workable coal beds, *No information*

See

H. Cap rock, *Limestone*

(1) Thickness, *14' at shaft.*

(2) Height above coal, *Feather edge to 10'*

See

The 15. was not found at 10'

I. Immediate roof, *Shale*

(1) Thickness, *+0 to 10'* (2) Contact with coal,

(3) Horizontal variation, *Varies from black*

& grey shale to a thin bed

See XI

J. Draw slate. (1) Thickness, (2) Contacts

Feather edge to 3' Black slate.

(3) Persistence, *Over most of mine.*

K. Coal bed: Max. *96* Min. *68* Av. *72* inches

(1) Benches, *Two*

(a) Position, *Above & below B.B.*

(b) Persistence, *Thruout mine.*

See

(2) Bedded impurities, kind, position in benches, persistence, ease of separation.

B.B. grey shale

14' (at shaft)

Limestone

10' Shale

See

6 Coal

(3) Irregularities in continuity of bed (due to deposition, erosion, or movement,

Slips

3 Floor clay

See

(a) Effect on mining,

1 Dir = 4'

K4 Structure See XI

See

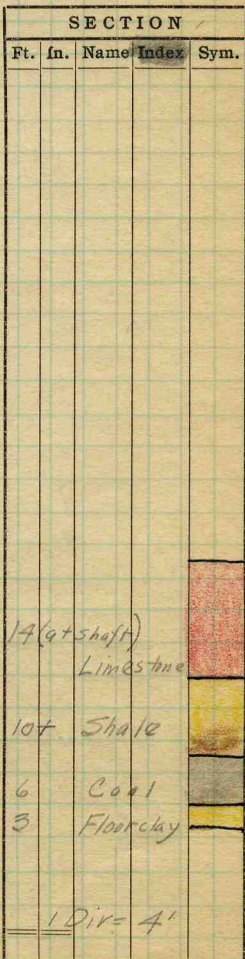
Coal: Survey No.

Collector, *Netzeband*

Mine, *Slogo*

Co. *Williamson*

Index No. *0232-23*



K. (5) Physical character of coal in benches,

(a) Relative hardness, *Same as rest Williamson County*(b) Lustre, *Bright with very little glance*(c) Fracture, *Cleat S-34E*(d) Texture, *Laminated* See(6) Impurities in coal, other than bedded, *fracture fillings*(a) Kind, *Pyrite lenses & stringers; calcite or gypsum*(b) Position and persistence, *Thruout entire bed laterally & vertically*(c) Rejected, *Lenses over 1/2"* Ease of separation, SeeL. Floor? (1) Material, *Floor clay*(2) Thickness, *2" to 3'*

(3) Variation,

(4) Note character, condition, tendency to heave, relation to undercutting commercial value. *Light grey shale with many slickensided surfaces**Heaves a little when heavy shots break surface
Used to undercut upon; value unknown.*

See

(5) Clay sample No.

Location,

M. Stratigraphy,

(1) Fossiliferous horizons underground,

Collection No.

Location,

N. Notes on effect of deep drilling in coal mine areas.

See

Collector, *Netzaband*Coal: Survey No. *6* Mine, *51090*Co. *Williamson*

Index No.

0232.23

I₃

Black slate over most of mine in the N.
In the S.W. the light grey shale predominates.
The limestone roof comes in irregular
patches.

K₄

The coal, where the shale & ls alternate,
appears to dip at an even angle so that
the irregularity permitting the ls. to show
in patches, must be in the ls. itself.

K₃

There is a minor slip in the 3rd E
entry.

Operator, *Slogo Coal Corp.* Date *July 22, 1921*
 Mine, *Slogo Mine* Sec. *32* T. *8S* R. *3E*
 Located, *3 1/2 N.* miles from *Marion*
 Location in mine, *5th E. entry off the Main N*

GRAPHIC SECTION		DESCRIPTION OF SECTION (AT POINT SAMPLED)	
In.	No.	No. (Note character and thickness of roof)	Inches
		<i>Dark Gray Shale Roof</i>	
		<i>1. Coal</i>	<i>15 1/2</i>
		<i>2. Charcoal & Pyrite</i>	<i>5/8</i>
		<i>3. Coal</i>	<i>9 1/2</i>
		<i>4. Charcoal</i>	<i>7/8</i>
		<i>5. Coal</i>	<i>3 1/2</i>
		<i>6. Shale</i>	<i>1/4</i>
		<i>7. Coal</i>	<i>5 3/4</i>
		<i>8. Charcoal</i>	<i>3/8</i>
		<i>9. Coal</i>	<i>9</i>
		<i>10. B.B. Shale</i>	<i>2 1/8</i>
		<i>11. Coal</i>	<i>11 1/2</i>
		<i>Tape 85 1/4"</i>	<i>86</i>
		<i>Gray floor clay</i>	
		(Note character and thickness of floor)	
		Total thickness of coal. <i>110</i>	<i>86</i>
		Condition, <i>Dry</i> Time, <i>9:50</i> hr. <i>20</i> min.	
		Wt. Gross, <i>38</i> lbs. Net, <i>7</i> lbs.	
		What Nos. shipped by Co.?	<i>10</i>
		Excluded from sample: No. <i>2, 10,</i>	
		Sample represents <i>83 1/4</i> in. tons.	
		Impurities? How do they occur?	

Sample No. *W-21-66* Can No. *17,730* Lab. No. *80615*
 Collector, *Monroe* Coal: Survey No.
 Mine, *Slogo* Co. *Williamson* Index No. *0232.23*
 R.—COAL SAMPLE SHEET.



Operator, *Slogo Coal Corp*
 Mine, *Slogo Mine*
 Located, *3 1/2 N* miles from *Marion*
 Location in mine, *Cross-out 50' from face of lot & 2nd Wolf Main N*

Date *July 23, 1921*
 Sec. *32* T. *85 R. 3 E*

GRAPHIC SECTION		DESCRIPTION OF SECTION (AT POINT SAMPLED)	
In.	No.	No. (Note character and thickness of roof)	Inches
		<i>Limestone Roof - 1" Clod</i>	
		<i>1. Coal</i>	<i>6 3/4</i>
		<i>2. Charcoal</i>	<i>1/8</i>
		<i>3. Coal</i>	<i>9 1/2</i>
		<i>4. Charcoal</i>	<i>2 1/8</i>
		<i>5. Coal</i>	<i>6</i>
		<i>6. Charcoal</i>	<i>1/8</i>
		<i>7. Coal</i>	<i>13</i>
		<i>8. Charcoal</i>	<i>1/8</i>
		<i>9. Coal</i>	<i>6</i>
		<i>10. Charcoal & Pyrite</i>	<i>1/2</i>
		<i>11. Coal</i>	<i>15 1/4</i>
		<i>12. Pyrite</i>	<i>1/8</i>
		<i>13. Coal</i>	<i>17 3/4</i>
		<i>14. B.B. Shale</i>	<i>1</i>
		<i>15. Coal</i>	<i>14 1/4</i>
		<i>Tape 90</i>	<i>90 3/4</i>
		(Note character and thickness of floor)	
		Total thickness of coal.	<i>1133 90 3/4</i>
		Condition, <i>Average</i>	Time, <i>10:46</i> hr. <i>47</i> min.
		Wt. Gross, <i>35</i> lbs.	Net, <i>4</i> lbs.
		What Nos. shipped by Co.?	<i>114</i>
		Excluded from sample: No. <i>14, 10</i>	
		Sample represents <i>89 1/4</i> in.	tons.
		Impurities? How do they occur?	

Sample No. *W-21-67* Can No. *9903* Lab. No. *80614*

Collector, *Monroe* Coal: Survey No. *6*
 Mine, *Slogo* Co. *Williamson* Index No. *0232.23*

Operator, *Slogo Coal Corp.*
 Mine, *Slogo Mine*
 Located, *3 1/2 N* miles from *Marion*
 Location in mine, *Main S back entry*

Date *July 22, 1921*
 Sec. *32* T. *8 S* R. *3 E*

GRAPHIC SECTION		DESCRIPTION OF SECTION (AT POINT SAMPLED)		
In.	No.	No.	(Note character and thickness of roof)	Inches
			<i>Gray Shale</i>	
		<i>1</i>	<i>Coal Roof 18-24"</i>	
		<i>2</i>	<i>Coal</i>	<i>4 7/8</i>
		<i>3</i>	<i>Charcoal</i>	<i>18 7/8</i>
		<i>4</i>	<i>Coal</i>	<i>11 7/8</i>
		<i>5</i>	<i>Charcoal</i>	<i>4 1/4</i>
		<i>6</i>	<i>Coal</i>	<i>26</i>
		<i>7</i>	<i>Charcoal</i>	<i>3 3/8</i>
		<i>8</i>	<i>Coal</i>	<i>4 3/4</i>
		<i>9</i>	<i>Charcoal</i>	<i>1 1/4</i>
		<i>10</i>	<i>Coal</i>	<i>10 1/4</i>
		<i>11</i>	<i>Bi. S. Shale</i>	<i>1 1/2</i>
		<i>12</i>	<i>Coal</i>	<i>19 1/4</i>
			<i>Tape 78 1/2</i>	<i>78 1/8</i>
			(Note character and thickness of floor)	
			Total thickness of coal.	<i>102 7/8</i>
		Condition, <i>Average</i>	Time, <i>11:30</i> hr. <i>30</i> min.	
		Wt. Gross, <i>33</i> lbs.	Net, <i>4</i> lbs.	
		What Nos. shipped by Co.?		
		Excluded from sample: No. <i>1, 11</i>		
		Sample represents <i>77 3/8</i> in. tons.		
		Impurities? How do they occur?		

Sample No. *W-21-68* Can No. *17,734* Lab. No. *80616*
 Collector, *Monroe* Coal: Survey No. *6*
 Mine, *Slogo* Co. *Williamson* Index No. *0232.23*