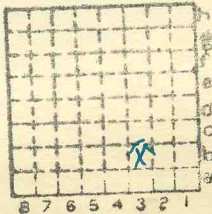


hoc: shut filed

Madwa CC. #12.

447



Sec. 20 ^{B3} ~~23~~

T. 8 ^{H.} S.

R. 1 ^{E.} W.

Index No.

MI 163



Mine originally operated by: (1) **Madison Coal Corp.**

Date _____

Original name or number: **#12**
Illinois Coal Report _____ p.

LATER OPERATORS

Date	Operator	Name or No.
2		
3		
4		
5		
6		
7		
8		
9		
10		
11		
12		
13		
14		

• Also owners

#See ownership sheet

Railroad, Wagon, Idle, Abandoned **1931**

I.C. SHIPPING MINE
IDENTIFICATION

County No. **447**

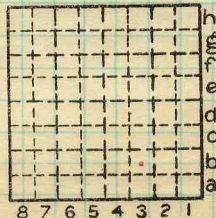
Coal No. **6**



Part

Quad. **Herrin**

County **Williamson**



Sec. **20**

T. **8** S.

R. **1** E. W.

Index No.

0420 b3

COAL MINE OPERATOR



(Sheets)

COAL PRODUCTION

(Sheet)

Period						Tons		
Mo.	Day	Year	Mo.	Day	Year			
					1931	221	951	

SUMMARIES

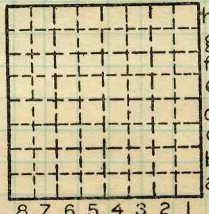
No.	to	No.	1921-1930	5 483	202
			Total production	5 705	153

Railroad, Wagon, Idle, Abandoned 1931
IDENTIFICATION

County No. 447 Coal No.

Quad. Herrin Part

County Williamson



Sec. 20

T. 8 S. 4

R. 1 E. 7

Index No.

0420 b3

COAL MINE—PRODUCTION



LOCATION AND ELEVATION

Location: side R. R. side R. R. side Highway No.

on top. map Location sheet

Elevation: Method, 1. Est. () ft. 2. Inst. (kind Plane Table) 408.7 ft. By W.B.R. (1932) Data sheet

DEPTH

Authority To coal ft. Authority Rail to rail ft. Top of coal above rail. (Est. Rule) ft. To coal 305 ft.

ALTITUDE OF TOP OF COAL

By estimated data By instrumental data 104 ft. SRH

Thickness

Max. in. Min. in. Aver. 96 in.

GEOLOGICAL DATA

Mine notes, date Coop No. Pyr. inv. Coal Ash inv.

CHEMICAL DATA

Analyses Face U. I. 13539-44 B. M. Others Car U. I. B. M. Others Org. Sulf U. I. B. M. Others Ash fusion U. I. B. M. Others Ash anal. U. I. B. M. Others U. I. B. M. Others

Classification

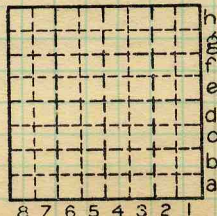
Misc. tests: Coking. Cleaning Boiler

Published descriptions: MI 163 B62

Railroad, Wagon, Idle, Abandoned 1931

IDENTIFICATION

County No. 447 Coal No. 6 Part Quad. Herrin County Williamson



Sec. 20 T. 8 S. R. 1 E. W. Index No.

0420 b3

COAL MINE LOCATION AND DATA

Location and Elevation Data

Location: Exact Approximate

(Approximate only if no trace or record of original exists)

Location by W. B. Roe

Date 8-12-1932 Notebook No. 614 Page 59(2376)

Looseleaf ref. _____

Map files No. 14-100-45

Description of location

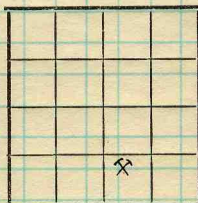
Position in sec., $\frac{1}{4}$ sec., 40 acres

_____ feet from North line

2100 feet from East line

975 feet from South line

_____ feet from West line



Sec. 20
T. 8 S.
R. 1 E.

Farm _____

No. _____

Company _____

Madison Coal Corporation

No. 12 mine

County No. 60

Elevation 409.4 ft.

By W. B. Roe

Method: Level, transit, alidade, hand level

Plane table & alidade

Elevation of Top of curve curb

Height of point above ground 14"

Date 8-12-1932 Notebook 614 P. 59(2376)

Looseleaf ref. _____

Map files No. 14-100-45

Description of item: (drill hole, mine, etc.) Air shaft - temp. abd. shipping mine
SHIPPING MINE

County Williamson
(45576-1M-10-30)

Quadrangle Herrin

Index No. 0420.4b



Town, Hurst Dewman Surface alt., 408.7 ft.
 Local Authority, _____ Depth to coal, 305 ft.
 Level: Auth., Roe. Pl. table 1932 Alt. top coal, 104 ft.
 Thickness: Av. 96 in.
 Max. in., Min. in.

Method,

R. R., I.C.



Location: authority,

GEN'L COAL REPT.

Operator #447 ✓ Mine Name or No. _____

19 Madison ~~Energy~~ Coal Corp #12
Standard Oil Bldg
Chicago

- ✓ Successor to _____
- Date _____
- Succeeded by _____
- Date _____
- Succeeded by _____
- Date _____

PRODUCTION.

							U. S. No.
19	<u>26</u>	<u>4500 T cap.</u>					
	<u>1927</u>	<u>1928</u>	<u>479 691</u>				
						<u>1930</u>	<u>#23</u>

Geol. Notes? _____
 Analyses No. 13539-40-41-42-43-44

Examined by [Signature] Ref. _____
 Coal bed name: Local #6 Survey No. _____
 County Williamson Index No. 0420.62

✓ K.-ACTIVE SHIPPING OR LOCAL COAL MINE.

Operator, *Madison Coal Corp*
 Mine, *No. 12*
 Location in mine, *Face of 6th W. N.*

Date *Mar. 7, 1922*
 Sec. T. R.

GRAPHIC SECTION		DESCRIPTION OF SECTION (AT POINT SAMPLED)	
In.	No.	No.	(Note character and thickness of roof) Inches
			<i>Coal roof</i> <i>8±</i>
		<i>1</i>	<i>Coal</i> <i>11 1/8</i>
		<i>2</i>	<i>Charcoal</i> <i>2/8</i>
		<i>3</i>	<i>Coal</i> <i>1</i>
		<i>4</i>	<i>Charcoal</i> <i>2/8</i>
		<i>5</i>	<i>Coal</i> <i>9</i>
		<i>6</i>	<i>Charcoal</i> <i>1/8</i>
		<i>7</i>	<i>Coal</i> <i>8 6/8</i>
		<i>8</i>	<i>Charcoal</i> <i>3/8</i>
		<i>9</i>	<i>Coal</i> <i>8</i>
		<i>10</i>	<i>Charcoal</i> <i>1/8</i>
		<i>11</i>	<i>Coal</i> <i>8</i>
		<i>12</i>	<i>Pyrite</i> <i>1/8</i>
		<i>13</i>	<i>Coal</i> <i>9 6/8</i>
		<i>14</i>	<i>Shale & pyrite B.B.</i> <i>2 3/8</i>
		<i>15</i>	<i>Coal</i> <i>19 1/8</i>
			<i>Light grey floor clay</i>
			<i>Tape 79"</i>
			(Note character and thickness of floor)
			Total thickness of coal. <i>87 3/8</i>

Condition, *Damp* Time, *1 hr. 30 min.*
 Wt. Gross, *35 lbs.* Net, *4 lbs.*
 What Nos. shipped by Co.? *All but 14*

Excluded from sample: No. *14*
 Sample represents *77* in. tons.
 Impurities? How do they occur? *Pyrite facings*

(1 division=3 in.) *2 lenses, disseminated pyrite; charcoal*

Sample No. *N-22-27* Can No. *890* Lab. No. *13542*

Collector, *Netzeband* Coal: Survey No. *6*

Mine, *Madison #12* Co. *Williamson* Index No. *0420*

Operator, *Madison Coal Corp* Date *Mar. 7, 1922*
 Mine, *No. 12* Sec. T. R.
 Location in mine, *45° Cross Cut between 3rd & 4th E*
N.

GRAPHIC SECTION		DESCRIPTION OF SECTION (AT POINT SAMPLED)	
In.	No.	No. (Note character and thickness of roof)	Inches
		<i>Black slate</i>	
		<i>Coal roof</i>	<i>8 ±</i>
	<i>1</i>	<i>Coal</i>	<i>16 7/8</i>
	<i>2</i>	<i>Charcoal</i>	<i>4/8</i>
	<i>3</i>	<i>Coal</i>	<i>12 6/8</i>
	<i>4</i>	<i>Charcoal</i>	<i>1/8</i>
	<i>5</i>	<i>Coal</i>	<i>10 3/8</i>
	<i>6</i>	<i>Charcoal</i>	<i>4/8</i>
	<i>7</i>	<i>Coal</i>	<i>23</i>
	<i>8</i>	<i>Shale B.B.</i>	<i>1 6/8</i>
	<i>9</i>	<i>Coal</i>	<i>7 4/8</i>
	<i>10</i>	<i>Pyrite</i>	<i>2/8</i>
	<i>11</i>	<i>Coal</i>	<i>8 2/8</i>
	<i>12</i>	<i>Pyrite</i>	<i>4/8</i>
	<i>13</i>	<i>Coal</i>	<i>3 2/8</i>
	<i>14</i>	<i>Pyrite</i>	<i>2/8</i>
	<i>15</i>	<i>Coal</i>	<i>1</i>
		<i>Light grey floor clay</i>	
		<i>Top 85 1/2</i>	
		(Note character and thickness of floor)	
		Total thickness of coal.	<i>94 1/8</i>

Condition, *Damp* Time, *1 hr. 20 min.*

Wt. Gross, *31 lbs.* Net, *4 lbs.*

What Nos. shipped by Co.? *All but 8*

Excluded from sample: No. *8 2 12*

Sample represents *83 7/8* in. tons.

Impurities? How do they occur? *Pyrite facings 2*

(1 division = 3 in.) *Vansas, charcoal*

Sample No. *N-22-28* Can No. *58* Lab. No. *13541*

Collector, *Netzband* Coal: Survey No. *6*

Mine, *Madison #12* Co. *Williamson* Index No.

R.—COAL SAMPLE SHEET. # *163* *0420*

Operator, *Madison Coal Corp.* Date *Mar. 7, 1922*
 Mine, *No. 12* Sec. T. R.
 Location in mine, *Face of 2nd W. N.*

GRAPHIC SECTION		DESCRIPTION OF SECTION (AT POINT SAMPLED)	
In.	No.	No. (Note character and thickness of roof)	Inches
		<i>Grey shale</i>	
		<i>1 Coal</i>	<i>20 3/8</i>
		<i>2 Charcoal</i>	<i>3/8</i>
		<i>3 Coal</i>	<i>18</i>
		<i>4 Pyrite</i>	<i>1/8</i>
		<i>5 Coal</i>	<i>30 2/8</i>
		<i>6 Shale B.B.</i>	<i>6/8</i>
		<i>7 Coal</i>	<i>22</i>
		<i>Light gray floor clay</i>	
		<i>Tape 9 1/2</i>	
		(Note character and thickness of floor)	
		Total thickness of coal.	<i>91 4/8</i>
		Condition, <i>Damp</i> Time, <i>1 hr. 30 min.</i>	
		Wt. Gross, <i>37 lbs.</i> Net, <i>4 lbs.</i>	
		What Nos. shipped by Co.? <i>All but 6</i>	
		Excluded from sample: No. <i>6</i>	
		Sample represents <i>91 1/2</i> in. tons.	
		Impurities? How do they occur? <i>Pyrite facings</i>	

(1 division = 3 in.)

2 lenses charcoal. 13539

Sample No. *N-22-29* Can No. *05730* Lab. No. *14539*
 Collector, *Netzeband* Coal: Survey No.
 Mine, *Madison #12* Co. *Williamson* Index No. *0420*

Operator, *Madison Coal Corp.* Date *Mar. 7, 1922*
 Mine, *No. 12* Sec. T. R.
 Location in mine, *Face of Main Back J.*

GRAPHIC SECTION		DESCRIPTION OF SECTION (AT POINT SAMPLED)	
In.	No.	No. (Note character and thickness of roof)	Inches
		<i>Light grey shale</i>	
		<i>Coal roof</i>	<i>82</i>
		<i>1 Coal</i>	<i>7 1/8</i>
		<i>2 Charcoal</i>	<i>1/8</i>
		<i>3 Coal</i>	<i>25 7/8</i>
		<i>4 Charcoal</i>	<i>1/8</i>
		<i>5 Coal</i>	<i>22</i>
		<i>6 Shale B.B</i>	<i>24 1/8</i>
		<i>7 Coal</i>	<i>27</i>
		<i>Light grey floor clay</i>	
		<i>Tap 84 1/4</i>	
		(Note character and thickness of floor)	
		Total thickness of coal.	<i>92 1/8</i>
		Condition, <i>Damp</i> Time, <i>1 hr. 10 min.</i>	
		Wt. Gross, <i>31 lbs.</i> Net, <i>4 lbs.</i>	
		What Nos. shipped by Co.? <i>All but 6</i>	
		Excluded from sample: No. <i>6</i>	
		Sample represents <i>82 3/8 in.</i> tons.	
		Impurities? How do they occur? <i>Brite facings</i>	
		<i>& lanes, charcoal</i>	

(1 division = 3 in.)

Sample No. *N-22-30* Can No. *17587* Lab. No. *13544*
 Collector, *Netzeband* Coal: Survey No.
 Mine, *Madison #12* Co. *Williamson* Index No.

Operator, *Madison Coal Corp.* Date *Mar. 8, 1922*
 Mine, *No. 12* Sec. *20* T. *85* R. *1E*
 Location in mine, *Face of 4th W.S.*

GRAPHIC SECTION		DESCRIPTION OF SECTION (AT POINT SAMPLED)	
In.	No.	No. (Note character and thickness of roof)	Inches
		Coal roof	10 ±
		1 Coal	6
		2 Charcoal	1/8
		3 Coal	15
		4 Charcoal	1/8
		5 Coal	2 1/8
		6 Charcoal	1/8
		7 Coal	14 2/8
		8 Black jack	1 1/8
		9 Coal	2
		10 Pyrite	2/8
		11 Coal	5 1/8
		12 Charcoal	2/8
		13 Coal	6 1/8
		14 Charcoal	1/8
		15 Coal	5 1/8
		16 Shale B.B.	3
		17 Coal	22
		Light grey floor clay	
		(Note character and thickness of floor)	
		Tape 85" Total thickness of coal.	95

Condition, *Dry* Time, *1 hr. 15 min.*

Wt. Gross, *33* lbs. Net, *9* lbs.

What Nos. shipped by Co.? *All but 16*

Excluded from sample: No. *8, 16*

Sample represents *80 1/2* in. tons.

Impurities? How do they occur? *Pyrite facings*

(1 division=3 in.) *2 small lenses, charcoal partings & lenses*

Sample No. *N-22-31* Can No. *20337* Lab. No. *13540*

Collector, *Netzeband* Coal: Survey No. *6*

Mine, *Madison #12* Co. *Williamson* Index No.

R.—COAL SAMPLE SHEET. #163 *0420*

Operator, *Madison Coal Corp* Date *Mar. 8, 1922*
 Mine, *No. 12* Sec. *20* T. *85* R. *1E*
 Location in mine, *Face of 1st E.S.*

GRAPHIC SECTION		DESCRIPTION OF SECTION (AT POINT SAMPLED)	
In.	No.	No.	(Note character and thickness of roof) Inches
			<i>Coal roof</i> <i>8±</i>
		<i>1</i>	<i>Coal</i> <i>21 4/8</i>
		<i>2</i>	<i>Charcoal</i> <i>4/8</i>
		<i>3</i>	<i>Coal</i> <i>33</i>
		<i>4</i>	<i>Shale B.B.</i> <i>3</i>
		<i>5</i>	<i>Coal</i> <i>20 6/8</i>
			<i>Light grey floor clay</i>
			<i>Tape 77 3/4</i>
			(Note character and thickness of floor)
			Total thickness of coal. <i>86 6/8</i>

Condition, *Dry* Time, *1* hr. — min.
 Wt. Gross, *30* lbs. Net, *7* lbs.
 What Nos. shipped by Co.? *All but 4*

Excluded from sample: No. *4*
 Sample represents *75 1/8* in. tons.
 Impurities? How do they occur? *Pyrite facings &*

(1 division = 3 in.) *small lenses, charcoal partings & lenses*

Sample No. *N-22-32* Can No. *49* Lab. No. *13543*

Collector, *Netzeband* Coal: Survey No. *6*

Mine, *Madison #12* Co. *Williamson* Index No.