



Form 180 Blue

abandoned:
April, 1970

Location sheet filed

AYRSHIRE COAL CO., INC.
Dio. AMAX
~~AYRESHIRE COLL.~~

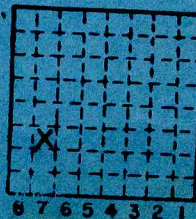
SEE T.20N. R.12W. for
other parts of this mine

~~FAIRVIEW COAL CORP.~~

"HARMATTAN"

MINE INDEX
#673

COUNTY NO. ~~4000~~
S-61



Sec. 2
T. 19 N.
R. 12 W.
Index No. 130207

✓ VERMILION County



Mine originally operated by: (1)

Date

FAIRVIEW COLLIERIES CORP.

Original name or number: **"HARMATTAN"**
 Illinois Coal Report p.

LATER OPERATORS

Date	Operator	Name or No.
2 1965	Fairview Collieries Corp.	"Harmattan"
3	Ayrshire Coal Co., Inc. Div. A MAX	Harmattan
4		
5		
6		
7		
8		
9		
10		
11		
12		
13		
14		

*Also owners

#See ownership sheet

Railroad, Wagon, Strip, Idle, Abandoned

Tipple

IDENTIFICATION

County No. ~~170~~

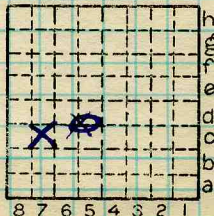
Coal No.

Coal Report No. **5-61**

7

Quad.

County **VERMILION**



Sec. **2**
 T. **19** N.
 R. **12** E.
 Index No.

COAL MINE OPERATOR

1702 C7



(Sheets) COAL PRODUCTION (Sheet)

Period				Tons			
Mo.	Day	Year	Mo.	Day	Year		
JAN.		1949	DEC		1949	406	942
		1950				491	344
		1951				843	699
		1952				825	381
		53				746	832
		1954				720	372
		1955				597	086
		1956				637	964
		1957				612	777
		1958				720	184
		1959				799	577
		1960				778	897
		1961				809	372
		1962				812	071
		1963				809	240
		1964				836	881
		1965				759	316
		1966				419	849
		1967				568	058
		1968				785	682
		1969				630	097
		1970				184	873

SUMMARIES

No.	to	No.

Railroad, Wagon, Strip Idle, Abandoned

Triple

Sec. 2

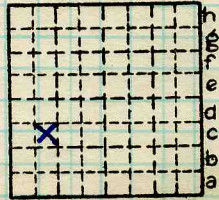
IDENTIFICATION

County No. Coal No.

Coal Report No. 5-61 7

Quad.

County



T. 19 N.
R. 12 W.
Index No.

1802 C7

COAL MINE—PRODUCTION

ILLINOIS GEOLOGICAL SURVEY, URBANA



ILLINOIS STATE GEOLOGICAL SURVEY

Location and Elevation Data

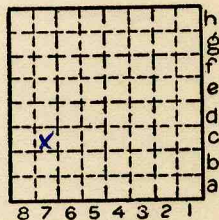
Location _____ Exact _____ Approx. _____
Location by _____
Date _____ Notebook No. _____ Page _____ No. _____
Looseleaf ref. _____ Map files No. _____

Position in sec.

_____ ft. from _____ line _____

_____ ft. from _____ line _____

Other description Tipple NW, SW



Sec. 2
T. 19 N.
S.
R. E.
12 W.

Bed Coal Depth (952 ft.) Elev. _____ Thickness 5'6"

Farm HARMATTAN STRIP No. _____

Company FAIRVIEW COLLIERIES CORP.

Card by MEH Date 3-4-52

Used in 5-61 Elevation _____ ft.

County No. 1076

Method: Level, transit, alidade, hand level, top. map.

Elev. of _____ Height of point above ground _____

Date _____ Notebook No. _____ Page _____ No. _____

Looseleaf ref. _____ Map files No. _____

Year drilled 1949 Total depth _____ I. P. _____

Sample set No. _____ Electric log _____ S _____ H _____ L _____

Description (drill hole, mine, etc.) STRIP MINE - NO. 7 COAL

Time log _____

County VERMILION Quad. DANVILLE Index No. 1802 C7

10/18/62

Fairview Collieries
Hargratten Mine (Danville)
South Pit (within few hundred feet of S. end)

78" coal

DAVIS + GLUSKOTER
Feet and tenths

coal m. b. b.; pyrite & calcite
on vertical fractures; 0-6

clarain and med to wide
vitrain bands; some vitrain
bands up to $\frac{3}{4}$ " - abundant
pyrite on vertical cleavage .6-1.1

coal m. b. b.; few vitrain
bands up to $\frac{3}{8}$ " calcite abundant
in lower 12" 1.1-3.2

zone of bone coal + nodular
pyrite; one nodule 2" x 6", (omitted
from sample); 3.2-3.5

coal m. b. b. with few fusain
bands up to $\frac{1}{4}$ "; pyrite & calcite
on vert. fractures + few pyrite
bands. At 4'5" is zone of nodular
pyrite - not encountered in section. 3.5-4.9

coal wide banded, small pockets
of vitrain up to $\frac{3}{4}$ " thick 4.9-5.4

shale gray, extremely carbonaceous
omitted from sample 5.4-5.5

coal normally b. b.; calcite abundant
on vert. fractures 5.5-6.15

shale, gray, soft, fissile,
carbonaceous - omitted from sample 6.15-6.2

coal m. b. b. 6.2-6.5

ILLINOIS GEOLOGICAL SURVEY, URBANA

Fairview Collieries October 18, 1962
Harmattan Mine (Danville)
South Pit (within few hundred feet of South end)
Davis and Gluskoter

78" Coal

Coal Description
Feet and tenths

- 0 - .6 Coal normally bright banded, pyrite and calcite on vertical fractures;
.6 - 1.1 Clarain and medium to wide vitrain bands; some vitrain bands up to 3/8"; abundant pyrite on vertical cleavage.
1.1 - 3.2 Coal normally bright banded; few vitrain bands up to 3/8", calcite abundant in lower 12"
3.2 - 3.5 Zone of bone coal and nodular pyrite; one nodule 2" x 6", (omitted from sample)
3.5 - 4.9 Coal normally bright banded with few fusain bands up to 1/4"; pyrite and calcite on vertical fractures and few pyrite bands. At 4'5" is zone of nodular pyrite - not encountered in section.
4.9 - 5.4 Coal wide banded; small pockets of vitrain up to 3/4" thick
5.4 - 5.5 Shale - gray, extremely carbonaceous omitted from sample.
5.5 - 6.15 Coal - normally bright banded; calcite abundant on vertical fractures.
6.15 - 6.2 Shale - gray, soft, fissile, carbonaceous omitted from sample
6.2 - 6.5 Coal - normally bright banded.

By HG & RD Date 10/18/62
Quad Part
County Vermillion

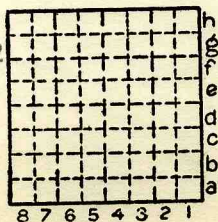


Table with columns 'Sec.' and 'N.', 'S.', 'E.', 'W.' and rows 'T.', 'R.'.

ILLINOIS GEOLOGICAL SURVEY, URBANA

Fairview Collieries Corporation

Harmattan Mine

Face Channel Sample #1

April 22, 1965

Sampler - H. J. Gluskoter, Comerio, Szafran

Recorder - Comerio

location - Est. SW NE SW, Sec. 3, T. 19N, R. 12W.

Total Thickness 6'4"

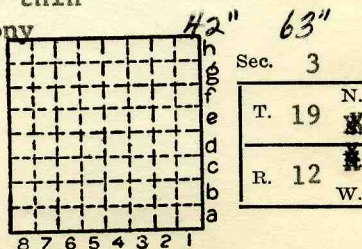
Gray Shale top, underclay bottom

<u>Description</u>	<u>From</u>	<u>To</u>
Coal - normally bright banded, calcareous and pyritic on vertical fracture 1½" fusain band at 7"	0	9½"
Coal - bright wide banded, thin, less than 1/16", soft fusain at 12", calcareous and pyritic on vertical fracture.	9½"	12"
Coal - normally bright banded, calcareous and pyritic on vertical fracture, thin, discontinuous, hard fusain band at 15½", pyrite nodule 1/4" thick times 1" long in section at 20".	12"	24"
Coal - normally bright banded, bony, pyritic in part in upper 2", calcareous and pyritic on vertical fractures.	24"	35"
Coal - bony, total of 1/4"	35"	35½"
Coal - normally bright banded, calcareous and pyritic on vertical fracture with 1" thin bony coal zone at bottom. Bony bed becomes very pyritic laterally.	35½"	42"
Coal - normally bright banded, calcareous on vertical fractures, 1/8" thin soft fusain at 49½" and 50", bony coal 1/8" thin at 55½" & at 61"		

By.....Date.....

Quad.....Part.....

County.....Vermillion.....



Sec. 3

T. 19	N.
R. 12	W.

Shale gray, inter lens with brown coal predominant, shale 1" omitted from sample.	63"	64"
Coal - normally bright banded, calcareous and pyrite on vertical fractures down to 6 feet.	64"	72"
Shale - gray, soft, sticky, stigmarian, 2½"	72"	74½"
Coal - normally bright banded, bottom of seam.	74½"	76½"
Bottom 3" of coal not sampled, not mined.		

In addition to sampling as face channel, same face sample in benches.

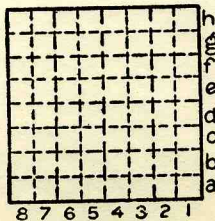
Bench 1	0	9½"
Bench 2	9½"	12"
3	12"	24"
4	24"	35"
5	35"	42"
6	42"	63"
7	63"	64"
8	64"	72"
9	72"	74½"
10	74½"	76½"

underclay sample top 3".

Shale immediately over coal 1" above.

Shale immediately over coal 1' above.

By.....Date.....
 Quad.....Part.....
 County Vermillion.....



Sec. 3
 T. 19 N.
 R. 12 W.

ILLINOIS GEOLOGICAL SURVEY, URBANA

Fairview Collieries Corporation

Harmattan Mine

Channel Sample #2

April 22, 1965

Sampler - H. J. Gluskoter

Assistants - Comerio & Szafran

Total thickness - 69"

Location Approximately - SE NE NW, Sec. 4-19N-12W

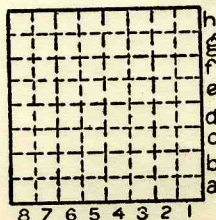
Immediately above coal - black shale, highly sheared, contains numerous sulphur balls and coal lenses.

<u>Description</u>	<u>From</u>	<u>To</u>
Coal - normally bright banded, calcareous and pyritic in vertical fracture, thin, less than 1/8", soft fusain at 2", 3", 11", 12 1/2"; 1/4" thick fusain bands at 6" & 7".	0"	13"
Bony Coal - 1/2"	13"	13 1/2"
Coal - normally bright banded, calcareous and abundant pyrite on vertical fracture; several very thin (5 or 6) fusain lens throughout.	13 1/2"	2'10"
Coal - very bony coal shale in part, calcareous and pyrite on vertical fractures.	2'10"	3'6"
Coal - normally bright banded, calcareous and pyritic on vertical fractures. bony coal, pyritic stringers up to 3/8" thick at 4'2", 1/8" fusain at 4'8 1/2".	3'6"	5'
Shale - gray 1/2", omitted from sample	5'	5' 1/2"
Coal - normally bright banded, minimum amount of calcite ^{calcite} on vertical fractures; hard, firm, more vitrain than above.	5' 1/2"	5'9"

By.....Date.....

Quad.....Part.....

County.....Vermilion.....



Sec.	N.
T.	S.
R.	E.
	W.



Fairview Collieries (Ayrshire) - Harmattan Mine Pit 2 -
SW NE NW, Sec. 4, 19N., 12W., Vermilion County - HHD and
MEH 2/27/68. Sample #1

Roof 20'± gray shale
total thickness 6'0"

No. 7 Coal

Coal - normally bright banded,
pyrite and calcite on cleat,
occasional thin soft fusain
bands

11" 0-11"

Fusain band, soft, non-
mineralized

.5" 11-11½"

Coal - normally bright banded,
calcite and some pyrite on
cleat

7.0" 11½-18½"

Fusain - mineralized with
pyrite (excluded)

¾" 18½-18 7/8"

Coal and pyrite - thinly
interbedded below

¾" 18 7/8-19½"

Coal - normally bright banded,
calcite and pyrite on cleats,
some kaolinite on weakly
vertical fractures, some
showing slickensides

5¾" 19½-25"

Fusain - soft

½" 25-25½"

Coal - normally bright banded,
calcite and kaolinite on
cleat

1½" 25½-27"

Fusain - soft

½" 27-27½"

Coal - normally bright banded,
calcite and kaolinite on
cleat and some pyrite,
occasional fusain lenses &
bony bands

10½" 27½-38"

Pyrite nodule - discontinuous
(excluded)

2" 38-40"



Coal - normally bright banded, calcite and kaolinite and some pyrite, a prominent 45 -60 slickensided surface in upper part (probably connected with compaction around pyrite nodule	11"	40-51"
Shale & bony coal band	1/4"	51-51 1/4"
Coal - normally bright banded, calcite and some pyrite on vertical fractures	9 3/4"	51 1/2-61"
Shale - medium light gray, slight greenish cast, carbonaceous (excluded)	3/4"	61-61 3/4"
Coal - normally bright banded, calcite, kaolinite on vertical faces, several thin pyrite bands	10 1/4"	61 3/4-72"
Floor is seatrock (claystone) - medium gray, carbonaceous rootlets, 4" seen		
Excluded: 3/8" pyritic fusain at 18 1/2"		
2" pyrite nodule at 38"		
3/4" shale at 61"		
<hr/> 3 1/8" total		

Total thickness of coal: 72" = 6' = 1.83m



Ayrshire Collieries - Harmattan Mine Pit 2 - SW NE NW,
 Sec. 4, T. 19 N., R. 12 W., Vermilion County - HHD and
 MEH 2/27/68 - Sample #2 (250' E. of sample #1)

Roof is 20'[±] gray shale
 total thickness 5'9"
 No. 7 Coal

Coal - normally bright banded, calcite and some pyrite on cleats	0-5½"
Fusain - soft, slightly pyritized	5½-6"
Coal - normally bright banded	6-7½"
Bony coal with some fusain	7½-7½"
Coal - normally bright banded, calcite and some pyrite and kaolinite on cleat at 24" and laterally 2' away is prominent 2" pyrite nodule	7½-29"
Fusain - soft	29-29½"
Coal - normally bright banded, calcite and some pyrite and kaolinite on cleat	29½-37½"
Fusain - mineralized mainly with pyrite and contains thin interbeds of shale (excluded)	37½-38"
Coal - normally bright banded, cleats with calcite and some pyrite and kaolinite, few slightly mineralized (pyrite) thin fusain lenses	38-54"
Pyrite band - lenticular (excluded)	54-55½"
Coal - normally bright banded, cleats with calcite and some pyrite	55½-59"
Claystone - medium gray with greenish hue, with thin coaly partings (excluded)	59-59 3/4"



Coal - normally bright banded,
brown shale, with much coal
thinly interbedded 59 3/4-60 1/2"

Coal - normally bright banded,
calcite and some pyrite and
kaolinite on cleats, several
thin bands or partings of
pyrite 60 1/2-69"

Floor is claystone (Seatrock),
medium dark gray, carbonaceous
rootlets, 3" seen

Excluded: 1/2" Pyritized Fusain and shale at 37 1/2"
1 1/2" Pyrite band at 54"
3/4" Claystone band at 59"

2 3/4" total

Total thickness of coal: $69'' = 5'9'' = 5.75' = 1.82\text{ m}$



Ayrshire Collieries - Harmattan Mine Pit 2 - NE NW, Sec. 4, T. 19 N., R. 12 W., Vermilion County - HHD and MEH
2/27/68 - Sample #3 (located 400' E. of sample #2)

total thickness 5'5"

No. 7 Coal

Coal - normally bright banded, pyrite and calcite on cleat	0-9½"
Bony coal	9½-11½"
Coal - normally bright banded, calcite and pyrite on cleat	11½-14½"
Coal - normally bright banded, but with several thin fusain lenses, and thin pyrite partings	14½-17"
Coal - normally bright banded, calcite dominant on cleat	17-27½"
Coal - normally bright banded, but with several thin bony bands	27½-32"
Fusain - mostly pyritized with thin pyrite bands, just 1' to left is 2" pyrite nodule	32-34"
Coal - normally bright banded, with many thin fusain lenses and several pyrite partings	34-37"
Coal - normally bright banded, with several thin fusain lenses, calcite on cleat	37-47"
Coal - normally bright banded, calcite dominant but with some pyrite on cleats	47-56"
Shale - gray (excluded)	56-56½"
Coal - normally bright banded	56½-57"
Shale - gray	57-57¼"



Coal - normally bright banded, calcite and pyrite on cleat	57 $\frac{1}{4}$ "-62 $\frac{1}{2}$ "
Bony coal	62 $\frac{1}{4}$ "-63"
Coal - normally bright banded, calcite on cleat	63-65"
Floor is claystone (Seatrock), medium gray with carbonaceous rootlets, 2" seen	

Excluded: $\frac{1}{2}$ " Shale band at 56"

Total thickness of coal: $65'' = 5' 5'' = 5.42' = 1.65m$

1/1

Fairview Collieries (Ayrshire)

Harmotton Mine ^{Pit 2} ~~(~~loc~~)~~ Loc ^{SW NE NW}

Sec. 4, 19N, 12W
Vermilion County

HHD-MFH - 2/21/68
Sample #1

Root 20'± gray shale

total ~~coal~~ thickness 60"

No. 7 coal,

- 0 - 11" ~~Coal~~ n.b.b., pyr. & calcite on cleat, occas. ^{thin} soft fusain bands
- 11" - 11 1/2" Fusain band, soft, non mic.
- 11 1/2" - 18 1/2" coal n.b.b., calcite & some pyr. on cleat
- 18 1/2" - 18 3/8" Fusain, mic. with ~~FeS₂~~ pyrite
- 18 3/8" - 19 1/4" coal & ^{pyrite} ~~FeS₂~~ (excluded!) thinly interbedded.
- 19 1/4" - 25" coal n.b.b. Calc. & ^{pyrite} ~~FeS₂~~ on cleats, some kaol. on nearly ~~±~~ vertical fractures, some showing slicken sides
- 25" - 25 1/2" fusain, soft
- 25 1/2" - 27" coal n.b.b., calcite & kaolin on cleat,

- 27 - 27 1/2" fusain, w/ff
- 27 1/2 - 38" coal, n.b.h., calc. & kool.
on chert & some pyrite,
occ. fusain lenses & bony
bands
- 38 - 40" ~~Pyrite~~
~~FeS₂~~ - nodule disc.
(excluded)
- 40 - 51" coal, n.b.h., calc. & kool. &
some FeS₂, a prominent
45°-60° slickensided surface in
upper part (probably conn. with
compact around ~~FeS₂~~-nood.)
pyrite
- 51 - 51 1/4" shale & bony coal band
- 51 1/4 - 61" coal, n.b.h., calc. & some
FeS₂ on vestic. faces.
- 61 - 61 3/4" shale, med. light grey,
slight greenish carb.
carbonaceous (excluded)

~~101~~ 3/4
11

72"

coal n.b.b., calc. be. nod.
on vertical faces, several
thin ~~FeS₂~~ bands
pyrite

~~74~~⁴

Floor is

seat rock, (claystone),
med. grey, carb. rootlets,
4" seen

Excluded:

3/8" ~~sh~~ pyritic fusain
at 18 1/2"

2" pyr. nod at 38"

3/4" sh at 61"

3 1/8" total



Ayrshire Collieries

Harmattan Mine, ~~252~~ 2, HHD, MCH 2/27/68
 Sample # 2 (250' E. of Sample # 1)

SW NE NW Sec. 4,
 T. 19 N., R. 12 W
 Vermilion County

Roof is 20' gray shale

No. 7 col, Total thickness. 5' 9"

- 0 - 5 1/2" - C, nbb, calc. & some pyr. on cleats
- 5 1/2 - 6 - Fusain, soft, slightly pyritized
- 6 - 7 1/4 - C, nbb
- 7 1/4 - 7 1/2 - ~~Fusain~~ Bony coal w/ some fusain
- 7 1/2 - 29 Coal, nbb, calc. some pyr. & kool. on cleat, at 24" and laterally 2' away
 is prom. 2" pyrite nodule
- 29 - 29 1/2 Fusain, soft
- 29 1/2 - 37 1/2 C, nbb, calcite & some pyr. & kool. on cleat
- 37 1/2 - 38 Fusain, min. mainly w/ pyrite and contain thin interbeds of shale
 (excluded)
- 38 - 54 C, nbb, cleats w/ calc. & some pyritized and kool. a few slightly min. (pyrite) thin fusain lenses
- 54 - 55 1/2 pyrite band, lenticular
 (excluded)
- 55 1/2 - 59 C, nbb, cleats w/ calcite & some pyrite
- 59 - 59 3/4 Claystone, med gy w/ gray hue, thin coaly partings
 (excluded)



Sample # 2

p. - 2

59³/₄ - 60¹/₂

Coal, n. bb

~~Claystone~~ brown
Shale, ~~not~~ ~~very~~ ~~no~~ much
~~thin~~ ~~coals~~ ~~thinly~~
interbedded

60¹/₂ - 69

Coal, p. bb, calcite & some
pyrite and kaol. ²/₁ coats, sev.
thin bands ~~of~~ or
partings of pyrite

floor is Claystone (searock), med. d. d.
94., carb. rootlets,
3" seen

Excluded:

1/2" Pyritized Fusain and sh. at 37¹/₂

1/2" pyrite band at 54"

3/4" Claystone band at 59"

2³/₄" total



Ayrshire Collieries Harmattan Run - Pit 2

Sample # 3 - HHD - MELT 2/27/68
Located 400' E of
Sample # 2

NE NW
Sec. 4, T. 19 N.
R. 12 W
Vermilion Co

No. 7 coal Total thk 5' 5"

- 0 - 9 1/2 C, nbb, pyrite & calc. on cleat
- 9 1/2 - 11 1/2 Bony coal
- 11 1/2 - 14 1/4 C, nbb, calc. & pyrite on cleat
- 14 1/2 - 17 C, nbb, but w/ sev. thin fusain lenses & thin pyrite ptngs
- 17 - 27 1/2 C, nbb, calcite dominant on cleat
- 27 1/2 - 32" - C, nbb, but w/ sev. thin bony bands
- 32" - 34" Fusain, mostly pyritized, just 1" to left is 2" pyrite nodules
- 34 - 37 C, nbb, w/ many thin fusain lenses & many sev. pyrite ptngs
- 37 - 47 C, nbb w/ sev. thin fusain lenses, calcite on cleat
- 47 - 56 C, nbb, calcite dominant but w/ some pyrite on cleats
- 56 - 56 1/2 - Shale, gray (excluded)



#3 cont'd.

56 $\frac{1}{2}$ -57 - Coal, nbb

57-57 $\frac{1}{4}$ Shale, gray

57 $\frac{1}{4}$ -62 $\frac{1}{4}$ C., nbb, calc. & pyrite on cleat

62 $\frac{1}{4}$ -63 Gray coal

63-65 C., nbb, calc. on cleat

Floor is clayston (sand rock),
 med. gy. & carb.
 rootlets, w/ 2" seen

Excluded

$\frac{1}{2}$ " shale band at
 56"



Form 180 Blue

See active shipping book.

(FRONTENAC CC, SALES NAME)

1-1948-~~68~~ FAIRVIEW COLLIERIES CORP.

2-1966-MEADOW LARK FARMS CO.

3-AUG, 1966 - AYRSHIRE COLLIERIES

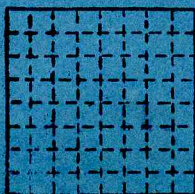
4-NOV, 1969-AYRSHIRE CC, DIVISION AMAX

ABANDONED APRIL, 1970

Jarvis Coll. Corp.

"Harmattan"

5-61



h Sec. 2 C 7
g
f T. 19 N.
e S.
d R. 12 E.
c W.
b Index No.
a

8 7 6 5 4 3 2 1

MI #673

ILLINOIS STATE GEOLOGICAL SURVEY

Location and Elevation Data

Location _____ Exact _____ Approx. _____

Location by _____

Date _____ Notebook No. _____ Page _____ No. _____

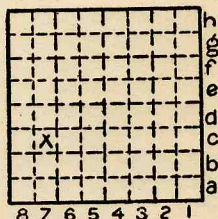
Looseleaf ref. _____ Map files No. _____

Position in sec.

_____ ft. from _____ line _____

_____ ft. from _____ line _____

Other description Tipple NW, SW



Sec. 2
 T. 19 N.
 S.
 R. 12 E.
 W.

Bed _____ Depth _____ Elev. _____ Thickness _____

Farm "Harmattan" Mine

No. _____

Company Fairview Collieries Corp.

No. _____

Card by MEH Date 3-4-52

Used in _____

County No. 1096 (?)

5-61 Elevation _____ ft.

Method: Level, transit, alidade, hand level, top. map.

Elev. of _____ Height of point above ground _____

Date _____ Notebook No. _____ Page _____ No. _____

Looseleaf ref. _____ Map files No. _____

Year drilled 1949 Total depth _____ I. P. _____

Sample set No. _____ Electric log _____ S _____ H _____ L _____

Description (drill hole, mine, etc.) Strip mine - No. 7 Coal

Time log _____

County Vermilion Quad. Danville Index No. 1802 C7

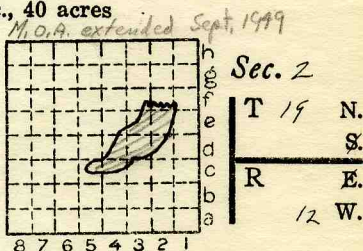
Location and Elevation Data

Location: Exact Approximate
 (Approximate only if no trace of record of original exists)
 Location by *Co. operations map in Co. office*
 Date..... Notebook No..... Page.....
 Looseleaf ref.....
 Map files No.....

Description of Location

Position in sec., 1/4 sec., 40 acres

.....feet from North line
feet from East line
feet from South line
feet from West line



Other description:.....
Tipple NW SW Sec 2.

Farm.....
 No.....
 Company *AYRSHIRE*
CARRIERS COAL (Retail
Sales - Frontenac Coal Co.)
 No. *Harmattan*
 County No.....

Elevation.....ft.

By.....

Method: Level, transit, alidade, hand level

Elevation of.....

Height of point above ground.....

Date..... Notebook..... P.....

Looseleaf ref.....

Map files No.....

Description of item: (drill hole, mine, etc.) *Strip pit.*

County *Yermilion* Quadrangle *Danville* Index No. *1802 C7*





Mine originally owned by: (1) **FAIRVIEW COLLIERIES CORP.**

Date **1948**

"HARMATTAN"

Authority

(Frontenac Coal Co. - Sales Name)

LATER OWNERS

Date	Owner
2	
3	Authority
4	Authority
5	Authority
6	Authority
7	Authority
8	Authority
9	Authority

Railroad, Wagon, Idle, Abandoned

STRIP MINE

IDENTIFICATION

County No.

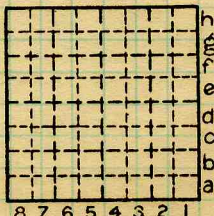
S-61

Coal No. **7**



Part

Quad. **PANVILLE**
County **VERMILION**



Sec. **2**

T. **19** N.

R. **12** W.

Index No.

1802 C7

COAL MINE OWNER NOT OPERATOR



(Sheets) COAL PRODUCTION (Sheet)

Period						Tons	
Mo.	Day	Year	Mo.	Day	Year		
					1949	406	942
					1950		
					1951		
					1952		
					1953		
					1954		
					1955		
					1956		
					1957		
					1958		
					1959		
					1960		
					1961		
					1962		
					1963		
					1964		
					1965		
					1966		
					1967		
					1968		
					1969		
					1970		

Fairview Collieries Co.

Meadowlark Farms Inc. / Wyrshire C.C.
Wyrshire C.C.

SUMMARIES

No. to No.

Railroad, Wagon, Strip, Idle, Abandoned

STRIP MINE
IDENTIFICATION

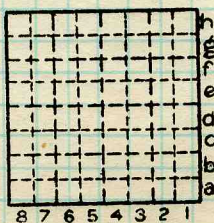
County No. _____

Coal No. **7**

Coal Report No. _____

Quad. **DANVILLE**

County **VERMILION**



Sec. **2**

T. **19** N.

R. _____ E.

R. **12** W.

Index No.

1802 C7

COAL MINE—PRODUCTION

ILLINOIS GEOLOGICAL SURVEY, URBANA



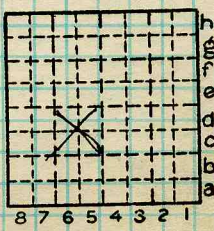


Harmuttan Mine - Fairview Collieries Corp.
 Channel Sample - west part of mine
 No. 7 coal
 total thk = 5' 10"

Top
 15' ± DRIFT
 20' ± Gy. Sh.
 0' 7" Dk. Gy. Sh.
 5' 10" Coal
 2' ± Ucl., gy

Inches		Detail on Coal	
From	To	thk	
0' -	5' ±	51"	Coal, NBB, ^{with} no. 7 vit. bands up to 3/4", pyrite & calcite on num. vert. fract., a 1/4" bony coal band 3' from top (not continuous), 1/4" bony coal band at 43" there is a 1" discontinuous fusain band
51"	60"	9"	Coal, NBB, harder & thinner banded than above, rather bright
60"	61"	1"	Sh., gy., excluded from sample
61"	61 1/2"	1/2"	Very bony coal, with bright banded streaks

By VAS & MEH Date 9-18-53
 Quad Danville NW Part _____
 County Vermilion



Sec. 3
 T. 19 N.
 R. 12 W.
 Index No.



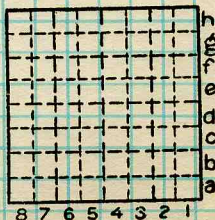


6 1/2" - 70" 8 1/2" Coal, NBB, with leases of
to a in up to 1/2" thick,
Coal is hard.

By Date

Quad. Part

County



Sec. N.
T. S.
R. E.
W.
Index No.



Abandoned:
April, 1970

Ayresshire Collieries Corporation

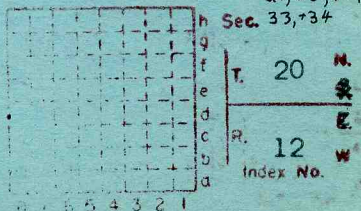
"Harmattan" mine

SEE T19N R12W for other
workings of this mine

S-61

Vermilion County

Mine index 673

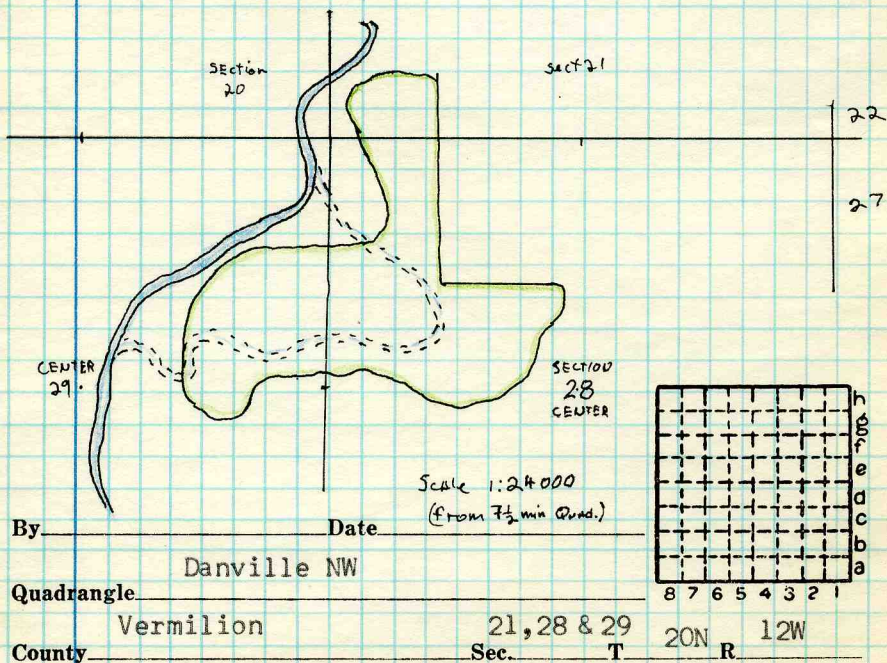


Illinois State Geological Survey

Notes on Ayreshire Coll. Corp. "Harmattan" strip mine visited by PJD and SCR on Aug. 15, 1969:

Vermilion Co. T20N, R12W, Sections 21, 28 & 29.

The Harmattan mine has worked in this area for several years and operations are to be completed by the end of the year. The course of the Vermilion River was changed in order to work this area. The old river course is marked below by dashed lines. The area to be mined by Harmattan mine is outlined in green. Most of the area in sections 28 and 29 has already been mined. In section 21 there is some question whether the area has been previously slope mined (see M.O. area #16), but this conflict is probably due to inaccuracy in the older data.

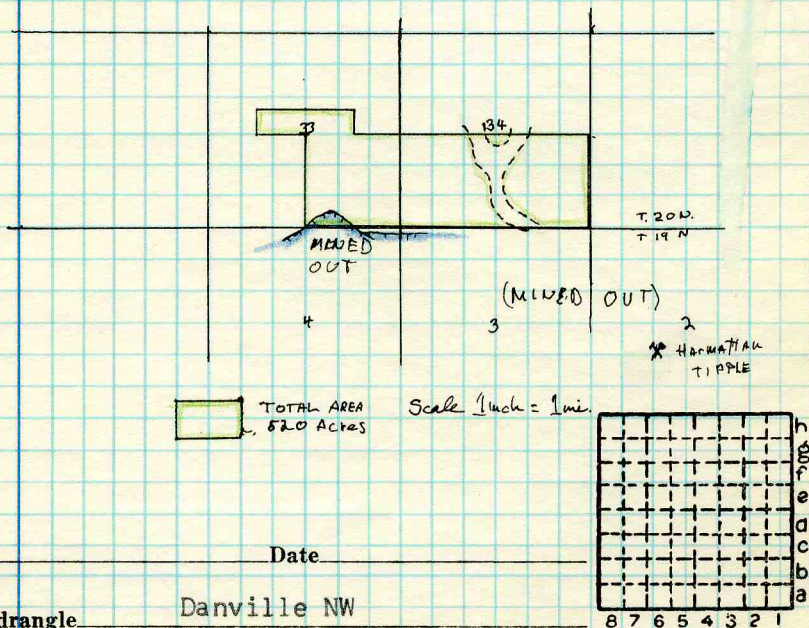


Illinois State Geological Survey

Notes on Ayreshire Coll. Corp. "Harmattan" mine visited by PJD and SCR on Aug. 15, 1969.

Vermilion Co. T. 20 N. R. 12 W, Sections 33 & 34

The Harmattan mine started strip mining operations in these two sections in late 1968. The area mined as of July 1969 is indicated below and is identical with the outline used on the 1969 revision of the Mined-out Area map #16. Present land holdings where mining is planned are outlines in green. The approximate location of an area with no coal (probably cut out) is indicated by a dashed line.



By _____ Date _____

Quadrangle Danville NW

County Vermilion Sec. 33 & 34 20N R. 12W



Ayrshire Collieries, Harmattan Mine, Pit 1150, East End,
6-21-68, MEH and SCR, 1900' from WL, 1400' from NL,
Sec. 28, T. 20 N., R. 12 W., Vermilion County, total thick-
ness 6'0", Sample #1

Coal - normally bright banded, calcite and some pyrite on vertical fractures	0-7½"
Fusain - soft	7½-8"
Coal - normally bright banded, prominent calcite-filled vertical fractures. Some pyrite and Kaolinite on vertical fractures. Few thin fusain bands in upper part	8-33½"
Pyrite lens (excluded)	33½-34"
Coal - normally bright banded, calcite and Kaolinite (some pyrite) on vertical fractures. Vitrain bands up to 3/8" thick	34-54"
Pyrite lens (excluded)	54-55"
Coal - normally bright banded, Kaolinite and calcite on vertical fractures	55-58"
Fusain - soft	58-58 3/8"
Coal - normally bright banded, calcite and Kaolinite on vertical fractures	58 3/8-61"
Shale - medium gray (excluded)	61-61 5/8"
Coal - with thin fusain and shale bands	61 5/8-62 3/8"
Coal - normally bright banded, calcite and some pyrite on vertical fractures. Slightly bony in upper part	62 3/8-72"
Floor - Underclay, not examined	
Roof - 40'± gray shale	

✓
AYRSHIRE COLL. HARWATTAN MINE 6/21/68
East end Pit 1150

MEH
SCR

SAMPLE #1
TOTAL THK 6'0"

- 1900' from W. line } Sec. 28
1400' " N. line } 20N-12W
Vermillion Co.

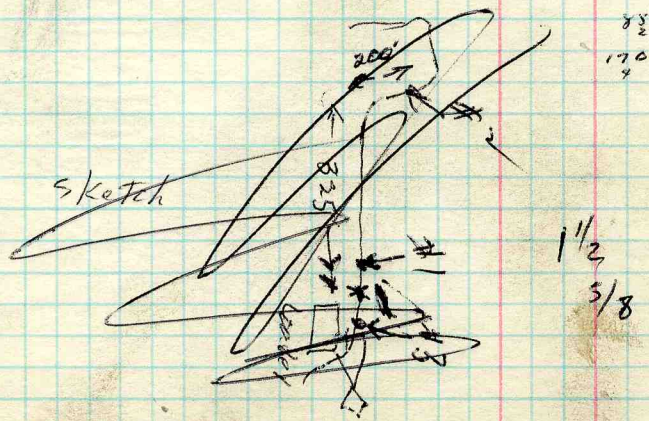
- 0" - 7½" Coal NBB, caliche & some pyrite,
on vert. fractures.
- 7½" - 8" Fusain soft
- 8" - 23½" Coal NBB, prom. caliche-filled,
vert. fracts. Some pyrite & Kaolinite
on vert. fracts. Few thin fusain
bands in upper part.
- 33½" - 34" pyrite lens (excluded)
- 34" - 54" Coal NBB, caliche & Kaolinite
(some pyrite) on vert. fracts. Vitrain band up to 3/8"
thick.
- 54" - 55" Pyrite lens (excluded)
- 55" - 58" Coal NBB, Kaolinite & caliche
on vert. fracts.
- 58" - 58⅞" Fusain, soft
- 58⅞" - 61" Coal NBB Caliche & Kaolinite
on vert. fracts.
- 61" - 61⅝" shale med gray (excluded)

61⁵/₈" - 62³/₈" Coal w/ ^{thin} fusain & shale
bands

62³/₈" - 72" Coal NBB Calcite &
some pyrite on vert. fract. sl.
bony in upper part.

Floor - Underclay, not examined

Roof - 40' ± gray shale





Ayrshire Collieries, Harmattan Mine, 6-21-68, MEH and SCR, 1600' from WL, 1200' from NL, Sec. 28, T. 20 N., R. 12 W., Vermilion County, total thickness 6'0", Sample #2

Coal - mostly thin vitrain with about 20% dark gray shale inter laminations, shale contains small pyritized fossil fragments. Maximum shale thickness = $\frac{1}{2}$ " (this thickness excluded)	0-2"
Fusain	2-2 $\frac{1}{4}$ "
Coal - normally bright banded, calcite and some pyrite on vertical fractures	2 $\frac{1}{4}$ -5"
Fusain band - soft, thickens to 3 $\frac{1}{2}$ " laterally	5-5 $\frac{1}{2}$ "
Coal - normally bright banded, calcite and some pyrite on vertical fractures. Occasional thin fusain lens	5 $\frac{1}{2}$ -15"
Fusain - soft	15-15 $\frac{1}{4}$ "
Coal - normally bright banded, prominent vitrain bands up to $\frac{3}{8}$ " in thickness. Calcite with some pyrite and Kaolinite	15 $\frac{1}{4}$ -29 $\frac{1}{2}$ "
Fusain	29 $\frac{1}{2}$ -29 $\frac{3}{4}$ "
Coal - normally bright banded, calcite and some pyrite on vertical fractures, vitrain prominent	29 $\frac{3}{4}$ -35"
Coal - thin-bedded, bony	35-36"
Coal - normally bright banded, calcite and some pyrite on vertical fractures	36-39"
Shale - dark gray (excluded)	39-39 $\frac{1}{2}$ "
Coal - normally bright banded, calcite and some pyrite and Kaolinite on vertical fractures. Occasional thin pyrite band and calcite fusain band	39 $\frac{1}{2}$ -52"



Pyrite band (excluded)	52-53"
Coal - normally bright banded, calcite and some pyrite and Kaolinite on vertical fractures	53-62"
Shale - light gray (excluded)	62-62½"
Fusain - vitrain and shale interbedded (excluded)	62½-63½"
Pyrite lens (excluded)	63½-64"
Coal - normally bright banded, hard, calcite and some pyrite on vertical fractures	64-72"
Floor - 3" section, Underclay (Claystone), dark gray, pyritic	
Roof - 40' _± shale, medium gray, well laminated, several sideritic nodules, and bands up to 2" _± thick, not closely examined; 0'3" _± "Clod", pyritic shell fragments (mostly broken) in a medium dark gray shale matrix, shells make up as much as 25% of bed and appear to be mostly gastropods and pelecypods, calcareous in part	

ARRSHIRE COLL.
MEH - SCR
SAMPLE #2

HARRATT AND MINE
1500' from W. line }
1200' from N. line } SEC. 28
6/21/68
20 N - 12 W
Vermilion Co.

TOTAL THK = 6'0"

0"-2" Coal mostly thin vitreous w/
abt 20% dk. gray sh interlam,
sh contains small pyritized fossil
fragments. Max. shale thickness = 1/2"
(This thickness excluded.)

2"-2 1/4" Fusain

2 1/4"-5" Coal NBB, calcite & some
pyrite on vert. fract.

5"-5 1/4" Fusain band, soft thickens
to 3 1/2" laterally.

5 1/4"-15" Coal NBB Calcite & some
pyrite on vert. fract. Occas.
thin fusain lens

15"-15 1/4" fusain soft

sample # 2

p. 2

- 15 $\frac{1}{4}$ " - 29 $\frac{1}{2}$ " Coal NBB, prom. vitrain
bands up to $\frac{3}{8}$ " in thickness. Caliche
w/ some pyrite & kaolinite.
- 29 $\frac{1}{2}$ " - 29 $\frac{3}{4}$ " fusain
- 29 $\frac{3}{4}$ " - 35" Coal NBB. Caliche & some
pyrite on vert. fract. Vitrain prom.
- 35" - 36" Coal, thin-bedded, bossy
- 36" - 39" - Coal NBB. Caliche & some
pyrite on vert. fract.
- 39" - 39 $\frac{1}{2}$ " sh dk gry. (excluded)
- 39 $\frac{1}{2}$ " - 52" Coal NBB Caliche & some pyrite
& kaolinite on vert. fract. Ocean.
- ~~52" - 53"~~ thin pyrite band & calc. fusain
band.
- 52" - 53" pyrite band (excluded)
- 53" - 62" Coal NBB Caliche & some
pyrite & kaolinite on vert. fract.

sample # 2

D-3

62-62½ sh lt gy (excluded)

62½"-63½" Fusain, vitrain & sh
interbedded. (excluded)

63½-64" pyrite lens (excluded)

64"-72" Coal NBB hard. Colinite
& some pyrite on vert. fractures

Floor is

3" seen - Underclay (claystone) dk. gy;
pyrite.

Roof is

40'± Shale, ^{med.} gy, well lam. several silt
nods. & bands up to 2"± thick,
not closely examined for

0'3" "clod", pyritic shell frags. (mostly broken)
in a med dk gy. sh. matrix
shells make up as much as 25% of
bed & appear to be mostly
gastropods & pelecypods, calc.
in part.



Ayrshire Collieries, Harmattan Mine, 6-21-68, MEH and SCR,
 2100' from WL, 1400' from NL, Sec. 28, T. 20 N., R. 12 W.,
 Vermilion County, total thickness 6'1", Sample #3, coal
 face wet

Coal - normally bright banded, calcite and some pyrite on vertical fractures	0-8 $\frac{1}{2}$ "
Fusain - soft	8 $\frac{1}{2}$ -9"
Coal - normally bright banded, calcite and some pyrite on vertical fractures, vitrain prominent up to $\frac{1}{2}$ " thick	9-27"
Fusain - partly pyritized	27-27 $\frac{1}{2}$ "
Coal - normally bright banded, calcite and pyrite on vertical fractures	27 $\frac{1}{2}$ -38"
Pyrite lens (excluded)	38-38 $\frac{3}{4}$ "
Coal - normally bright banded	38 $\frac{3}{4}$ -42"
Vitrain band	42-43 $\frac{1}{2}$ "
Coal - normally bright banded, calcite and pyrite on vertical fractures	43 $\frac{1}{2}$ -54"
Coal - thin bedded, slightly bony	54-56"
Coal - normally bright banded, calcite and pyrite on vertical fractures	56-62"
Shale - light gray (excluded)	62-62 $\frac{1}{2}$ "
Coal - normally bright banded, calcite and pyrite on vertical fractures, very soft underclay, not examined	62 $\frac{1}{2}$ -72"
Roof - 40' \pm gray shale	

✓
AYRSHIRE COLL. HARMATTAN MINE 6/21/68

MEH-5CR

~ 2100' FROM W. LINE, 1400' N. LINE
SECTION 28 - 20N - 12W

SAMPLE #3

vermillion Co.

TOTAL THK = 6'1"

Coal face wet.

0" - 8 1/2" Coal NBB Caliche & some
pyrite on vert. fractures

8 1/2" - 9" Fusain soft

9" - 27" Coal NBB, caliche & some
pyrite on vert. fract. Vitreous
mass up to 1/2" thick.

27" - 27 1/2" Fusain partly pyritized

27 1/2" - 38" Coal NBB caliche &
pyrite on vert. fract.

38" - 38 3/4" pyrite lens (excluded)

Sample #3

P-2

- 38³/₄ - 42" Coal NBB
- 42" - 43¹/₂" Vitriam band
- 43¹/₂" - 54" Coal NBB calcite & pyrite on vert. fractures.
- 54" - 56" Coal thin bedded, shaly
- 56" - 62" Coal NBB calcite & pyrite on vert. fract.
- 62 - 62¹/₂" sh. lt gy. (excluded)
- 62¹/₂ - 72" Coal NBB calcite & pyrite on vert. fract., very soft under clay, not examined
- ~~Below 72" of rock very soft.~~
- Roof - 40' ± gy. shale