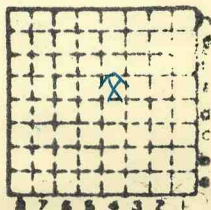


This is probably the "Old Henderson. Wallace" slope mine reported by Rol in Aug '32 as being Abd. It was reopened by Harrison in Nov. '32. ml. 10/57

Hudusa Wallace CC # 2

ISGS Index  
No. 4061.

586



Sec.	8
T.	9 <sup>H.</sup> <sub>S.</sub>
R.	3 <sup>E.</sup> <sub>W.</sub>
Index No.	

mine originally operated by: (1)

Date

1926

Henderson + Wallace

Original name or number:

Illinois Coal Report

p.

LATER OPERATORS

Date

Operator

Name or No.

2 1932 W.E. Guinan CC

3 1933 Mxwhiter CC

4 1934 Old Bruce CC (local)

5

6

7

8

9

10

11

12

13

14

\*Also owners

#See ownership sheet

Railroad, Wagon, Strip, Idle, Abandoned

1935

IDENTIFICATION

Slope

County No. 586

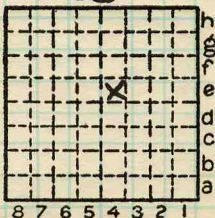
Coal No.

Coal Report No. \_\_\_\_\_

6

Quad.

County Williamson



Sec. 8

T. 9 N. S.

R. 3 E. W.

Index No.

0708

COAL MINE OPERATOR





( Sheets )

COAL PRODUCTION

( Sheet )

Period						Tons			
Mo.	Day	Year	Mo.	Day	Year				
					1931				
					1932			5713	
					1933			2200	
					1934			2415	Local
					35			750	Local
								11078	

1372

1368931  
7913  
-----  
1361018

1372086  
1361018  
-----  
17068

SUMMARIES

No.	to	No.			
1916		1933			1368931
		Local 61136			1372096

Railroad, Wagon, Idle, Abandoned

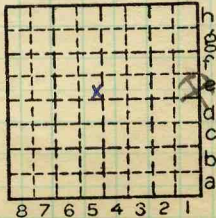
IDENTIFICATION

County No. 495 Coal No. 6

W. Frankfort

Quad. Part

County Williamson



Sec. 8

T. 9 S. 5.  
R. 3 W. 5.

Index No.

0708 e f





Mine originally operated by: (1)

Date

Henderson Wallace Coal Co.

Original name or number: #2  
Illinois Coal Report p.

LATER OPERATORS

Date	Operator	Name or No.
2		<p>NOT called #2 in coal reports. see preceding page.</p>
3		
4		
5		
6		
7		
8		
9		
10		
11		
12		
13		
14		

\* Also owners

#See ownership sheet

Railroad, Wagon, Idle, Abandoned

Mo.P. SHIPPING MINE

IDENTIFICATION

County No. 586

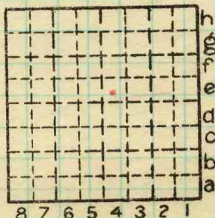
Coal No.

6

Quad. W. Frankfort

Part

County Williamson



Sec. 8

T. 9	N. S.
R. 3	E. W.

Index No. 0708 e4

COAL MINE OPERATOR



LOCATION AND ELEVATION

Location: side R. R. side R. R. side Highway No. on top. map Location sheet

Elevation: Method, 1. Est. ( ) ft. 2. Inst. (kind Plane Table) 484.9 ft.

By W.B.R. (1932) Data sheet

DEPTH

Authority To coal ft. Authority Rail to rail ft. Top of coal above rail. (Est. Rule) ft. To coal 65 ft.

ALTITUDE OF TOP OF COAL

By estimated data ft. By instrumental data 420 ft.

Thickness

Max. 84 in. Min. 60 in. Aver. 78 in.

GEOLOGICAL DATA

Mine notes, date Pyr. inv. Coal Ash inv.

Coop No. 173

X

CHEMICAL DATA

Table with 4 columns: Analyses Face, U. I., B. M., Others. Rows include Car, Org. Sulf, Ash fusion, Ash anal.

Classification

Misc. tests: Coking. Cleaning Boiler

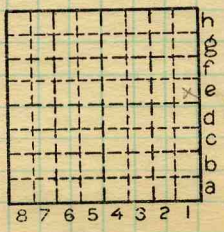
Published descriptions:—

Railroad, Wagon, Idle, Abandoned

IDENTIFICATION

County No. 495 Quad. W. Frankfort County Williamson

Coal No. 6 Part



Sec. 8 T. 9 N. S. R. 3 E. W. Index No. 0708 el

COAL MINE LOCATION AND DATA





LOCATION AND ELEVATION

Location: side R. R.
side R. R.
side Highway No.
on top. map Location sheet

Elevation: Method, 1. Est. ( ) ft.
2. Inst. (kind Plane Table) 471.3 ft.

By W.B.R. (1932) Data sheet

DEPTH

Authority To coal ft.
Authority Rail to rail ft.
Top of coal above rail. (Est. Rule) ft.
To coal 49 ft.

ALTITUDE OF TOP OF COAL

By estimated data ft.
By instrumental data 422 ft.

Thickness

Max. in. Min. in. Aver. 84 in.

GEOLOGICAL DATA

Mine notes, date
Coop No. Pyr. inv. Coal Ash inv.

CHEMICAL DATA

Analyses Face U. I. B. M. Others
Car U. I. B. M. Others
Org. Sulf U. I. B. M. Others
Ash fusion U. I. B. M. Others
Ash anal. U. I. B. M. Others
U. I. B. M. Others

Classification

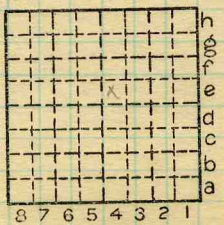
Misc. tests: Coking. Cleaning Boiler

Published descriptions:—

Railroad, Wagon, Idle, Abandoned Slope

IDENTIFICATION

County No. 586 Coal No. 6
Quad. W. Frankfort Part
County Williamson



Sec. 8
T. 9 N. S.
R. 3 E. W.
Index No. 0708 e4

COAL MINE LOCATION AND DATA