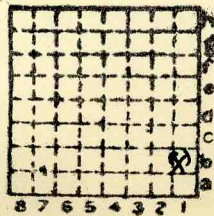




Form 180

BLACK STAR CC - LOGAN  
Co. No. 262.  
M.i. \*140



Sec. 35

T. 6 S. \*  
R. 3 E. \*

Index No.



Company \_\_\_\_\_ No. \_\_\_\_\_

Farm \_\_\_\_\_ No. \_\_\_\_\_

Elev. \_\_\_\_\_ of \_\_\_\_\_ by \_\_\_\_\_ Total depth \_\_\_\_\_ Year drilled \_\_\_\_\_

For \_\_\_\_\_ Method \_\_\_\_\_

Kind of \_\_\_\_\_

Remarks \_\_\_\_\_

St \_\_\_\_\_

Remarks \_\_\_\_\_

### Reclamation work to begin

7-9-88 50 30  
Reclamation work will begin soon at the former Black Star Coal Co. Logan Mine in Franklin County and the Pyramid Coal Co. Mine in Perry County under contracts awarded by the Illinois Abandoned Mined Lands Reclamation Council.

The contracts totaling \$279,272 involve a Du Quoin firm, Donald Weis Clearing and Excavating Inc., which will work at Logan, and a Modesto firm, Gibbs Construction Co., at Pyramid.

Work on the Logan Mine in Franklin County will total \$136,561. Work at the Pyramid Coal Co. Mine will total \$142,711.

July, 1988

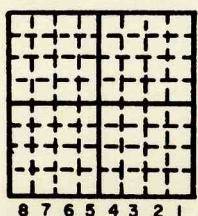
Black Star CC Logan mine

Location M-140

Correlations by \_\_\_\_\_ Date \_\_\_\_\_

Basis \_\_\_\_\_

County \_\_\_\_\_ Co. no. \_\_\_\_\_



Sec. 35

T.	N.
6	S.
3	E.
R.	W.

Data sheet by \_\_\_\_\_

Date \_\_\_\_\_



Mine originally operated by: (1)

Date

1915

Benton District Coal Co.

Original name or number:

Hanaford

Illinois Coal Report

p.

LATER OPERATORS

Date

Operator

Name or No.

2 Black Star Coal Co. Logan

3

4

5

6

7

8

9

10

11

12

13

14

\* Also owners

#See ownership sheet

Railroad, Wagon, Idle, Abandoned

I.C. SHIPPING MINE IDENTIFICATION

CB&Q

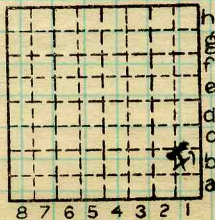
County No. 262

Coal No. 6

Quad. 263

Part

County Franklin



Sec. 35

T. 6 S.

R. 3 E.

Index No.

COAL MINE OPERATOR

0735-16



Mine originally operated by: (1)

Date  
1909

Carroll & Franklin Coal Co.

Original name or number:

Illinois Coal Report 1954 p. 75

Logan

LATER OPERATORS

Date	Operator	Name or No.
2 1914	Benton District Coal Co.	
3 1916	John A. Logan Coal Co.	
4 1918	Black Star Coal Co.	
5		
6		
7		
8		
9		
10		
11		
12		
13		
14		

\*Also owners

#See ownership sheet

SHAFT Railroad, Wagon, Strip, Idle, Abandoned

693'

IDENTIFICATION

8'

County No. \_\_\_\_\_

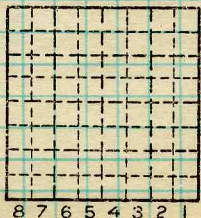
Coal No.  6

Coal Report No. \_\_\_\_\_

Quad.

County

**FRANKLIN**



Sec.

T.

R.

Index No.

N.  
S.

E.  
W.

COAL MINE OPERATOR



( Sheets ) COAL PRODUCTION ( Sheet )

Period						Tons			U.S. No.
Mo.	Day	Year	Mo.	Day	Year				
			Cap -		1926	2	500		624
					1927	113	495		
			Idle		1931				
			"		1932				
			"		1933				

SUMMARIES

No.	to	No.			
1909	-	1930	(Coal Rept Sum)	4	274 567

Railroad, Wagon, Idle, Abandoned

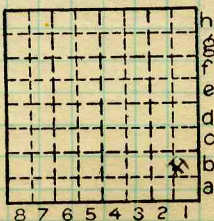
IDENTIFICATION

SHIPPING MINE

County No. 262 Coal No. 6

Quad. 263 Part

County Franklin



Sec. 35

T. 6 N.  
S.  
R. 3 E.  
W.

Index No.

COAL MINE—PRODUCTION

0735.16



LOCATION AND ELEVATION

Location: side R. R.  
 side R. R.  
 side Highway No.

on top. map Location sheet

Elevation: Method, 1. Est. ( ) \_\_\_\_\_ ft.  
 2. Inst. (kind *PT*) \_\_\_\_\_ ) *493.0* ft.

By *W.B.R.* Data sheet

DEPTH

Authority *Mine Notes ; Coal Rept - 1909, p. 370* To coal \_\_\_\_\_ ft.  
 Authority Rail to rail \_\_\_\_\_ ft.  
 Top of coal above rail. (Est. Rule) \_\_\_\_\_ ft.  
 To coal *671* ft.

ALTITUDE OF TOP OF COAL

By estimated data \_\_\_\_\_  
 By instrumental data \_\_\_\_\_ *-178* ft.

Thickness

Max. in. Min. in. Aver. *90* in.

GEOLOGICAL DATA

Mine notes, date \_\_\_\_\_

Coop No. *140* Pyr. inv. Coal Ash inv.

CHEMICAL DATA

Analyses Face	U. I. <i>12738-9-90</i>	B. M.	Others
Car	U. I.	B. M.	Others
Org. Sulf	U. I.	B. M.	Others
Ash fusion	U. I.	B. M.	Others
Ash anal.	U. I.	B. M.	Others
	U. I.	B. M.	Others

Classification

Misc. tests: Coking. Cleaning Boiler

Published descriptions:—

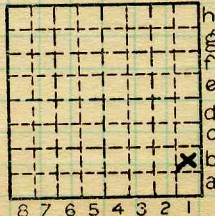
Railroad, Wagon, Idle, Abandoned

SHIPPING MINE IDENTIFICATION

County No. *262*

Coal No. *6*  
 Part

Quad. *W. Frankfort*  
 County *Franklin*



Sec. *35*

T. *6* S.

R. *3* E.

Index No.

*0735-16*

COAL MINE LOCATION AND DATA



Location and Elevation Data

Location: Exact  Approximate

(Approximate only if no trace or record of original exists)

Location by W.B. Roe

Date 7-27-1932 Notebook No. 614 Page 5 (2020)

Looseleaf ref. \_\_\_\_\_

Map files No. \_\_\_\_\_

Description of location

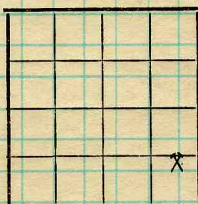
Position in sec.,  $\frac{1}{4}$  sec., 40 acres

\_\_\_\_\_ feet from North line

525 feet from East line

1125 feet from South line

\_\_\_\_\_ feet from West line



Sec.	35	■
T.	6	S.
R.	3	E.
		■

Farm \_\_\_\_\_

No. \_\_\_\_\_

Company \_\_\_\_\_

Black Star Coal Co.

No. hogan mine

County No. 73

Other description: MN 1921

F

Elevation 489.3 ft.

By W.B. Roe

Method: Level, transit, alidade, hand level

Plane table and alidade

Elevation of curb

Height of point above ground \_\_\_\_\_

Date 7-27-1932 Notebook 614 P. 5 (2020)

Looseleaf ref. \_\_\_\_\_

Map files No. 5-28-28

Description of item: (drill hole, mine, etc.) Airshaft - shipping mine

**SHIPPING MINE**

County

Franklin

Quadrangle

W. Franklin

Index No.

0935.1b





Location and Elevation Data

Location: Exact  Approximate

(Approximate only if no trace or record of original exists)

Location by W.B.Roe

Date 7-27-1937 Notebook No. 614 Page 5 (2026)

Looseleaf ref. \_\_\_\_\_

Map files No. 5-28-28

Description of location

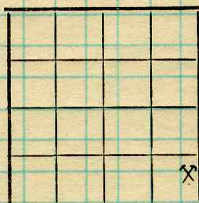
Position in sec., 1/4 sec., 40 acres

\_\_\_\_\_ feet from North line

300 feet from East line

825 feet from South line

\_\_\_\_\_ feet from West line



Sec. 35  
T. 6 S.  
R. 23 E.

† Other description: \_\_\_\_\_

MN 1921

Farm \_\_\_\_\_

No. \_\_\_\_\_

Company \_\_\_\_\_

Black Star Coal Co.

No. Hogan Mine

County No. 262

Elevation 493.0 ft.

By W.B.Roe

Method: Level, transit, alidade, hand level

Plane table and alidade

Elevation of Top of rail

Height of point above ground 3"

Date \_\_\_\_\_ Notebook 614 P. 5 (2026)

Looseleaf ref. \_\_\_\_\_

Map files No. 5-28-28

Description of item: (drill hole, mine, etc.) Hoist shaft - shipping mine - A.B.D.

**SHIPPING MINE**

County Franklin

(45576-1M-10-30)

Quadrangle W. Frankfort

Index No. 0735.1b





COAL MINE NOTES.

0735

COUNTY *Franklin*

TOWN *Hanaford.*

MAP No. ~~0735~~

T. *65*

R. *3E*

S. *35 SE. 1/4*

OPERATOR *Carrol and Franklin County Coal Co.*

OFFICE *Smotherville*

MINE *Smotherville*

TIPPLE

ENGINES

BOILERS

DRUM

SHAFT

CAGE

HAULAGE

CARS

VENTILATION

DRAINAGE

SPRINKLING

WORKING SYSTEM

MINING METHODS

SIZE OF ENTRIES—MAIN

CROSS

ROOM

NECK

SIZE OF PILLARS—MAIN

CROSS

ROOM

SHAFT

CHAIN

BARRIER

AMOUNT OF TIMBERING

SIZE

PROPORTION OF COAL UTILIZED

AMOUNT AND CHARACTER OF WASTE

ACREAGE OF COAL MINED

ACREAGE OF COAL REMAINING

PROPORTION OF MINE RUN AND SCREENED COAL

METHOD OF SIZING

RESCREENED

SIZES

PER CENT

PROPORTION AND SIZE OF WASHED COAL

DAILY OUTPUT

UTILIZATION

MARKETS

FREIGHT RATES

SELLING PRICES AT MINE

~~0735~~

0735

COAL LAND OWNED

LEASED

HELD IN FEE

COST OF LAND OWNED

LEASED

HELD IN FEE

ADDITIONAL NOTES



COAL MINE NOTES.

CONTINUED

OPERATOR *Carroll & Franklin County Coal Co* MINE *Smotherville.*

ENTRANCE NAME OF COAL BED **0735**

ELEVATION *490* THICKNESS OF COAL

DEPTH TO FLOOR *693* MAX. MIN. AV. *7'-6"*

ALTITUDE OF COAL

LOCATION OF SECTION

No.	SECTION.	In.
1		
2		
3		
4		
5		
6		
7		
8		
9		
10		
11		
12		
Tape		Total

SAMPLE No.  
CAN No.  
CONDITION  
GROSS WEIGHT  
TIME EXPOSED  
NOT SHIPPED  
NOT INCLUDED

SECTION	Feet

PHYSICAL PROPERTIES BY NUMBERS

ROOF

FLOOR

DIP

FAULTS, ETC.

GAS

*2825\**  
**0735**

COLLECTOR

REFERENCE

DATE

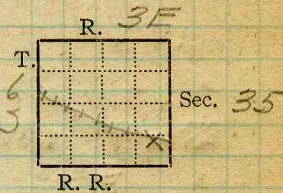


Mine Name or No., *Logan Mine*

*at* mile ~~from~~ *Logan*

Operator, 19*21* *Black Star Coal Co. 3*

Operator, 191



Entrance, *Shaft* Elev., *480* ft. *above, sea level.*

Depth to ~~bottom~~ coal, *671* ft. Alt. *-191'*

SURFACE DATA.

A. Topography, *Rolling, more or less swampy* See

B. Surficial materials. (1) Character,

(2) Thickness, *No information* (3) Effect on mining and shaft-sinking, of former drainage lines, underground water strata, etc. *No information.*

C. Outcrops, (1) Character, See

(2) Structure, See

(3) Fossil horizons, See

Collection No.,

(4) Evidences of subsidence, See

D. Note collection of mine maps, drill records and shaft logs.

See drill record sheet,

E. Notes on surrounding area,

See

Coal bed name: Local,

Survey No. *6*

Collector, *Wilson*

Mine, *Logan*

Co. *Franklin*

Index No. *0735.92*

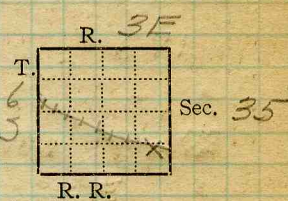


Mine Name or No., *Logan Mine*

*at* ~~mile~~ *from* ~~Logan~~

Operator, 19*21* *Black Star Coal Co. 3*

Operator, 191



Entrance, *Shaft* Elev., *480* ft. *above, sea level.*  
( *below,*

Depth to ~~bottom~~ coal, *671* ft. Alt. *-191'*

SURFACE DATA.

A. Topography, *Rolling, more or less swampy* See

B. Surficial materials. (1) Character,

(2) Thickness, *No information* (3) Effect on mining and shaft-sinking, of former drainage lines, underground water strata, etc. *No information.*

C. Outcrops, (1) Character,

See

(2) Structure,

See

(3) Fossil horizons,

See

Collection No.,

See

(4) Evidences of subsidence,

See

D. Note collection of mine maps, drill records and shaft logs.

See drill record sheet,

E. Notes on surrounding area,

See

Coal bed name: Local,

Survey No. *6*

Collector, *Wilson*

Mine, *Logan*

Co. *Franklin*

Index No. *0735.92*

F. Thickness of rock above bed worked, *No information.*

(1) Important variations, See

G. Note presence of strata having important effect on mining, *"Soapstone", a light colored sh.* See **X 1**

- (1) Position, *In lenses between coal & bastard rock?*  
 (2) Character, *Treacherous*  
 (3) Persistence, *throughout mine in patches.*  
 (4) Other workable coal beds, *None*

See

H. Cap rock, *L.S. reptd. but never*

- (1) Thickness, *Not known* See  
 (2) Height above coal, *Seen.*

See

I. Immediate roof, *Black slate, Coal*

- (1) Thickness,
- 6"-18"*
- (2) Contact with coal,

(3) Horizontal variation, **X 3**See **X 2**J. Draw slate. (1) Thickness, *6-7"* (2) Contacts(3) Persistence, *In patches thruout mine.*K. Coal bed: Max. *100* Min. *72* Av. *86* inches(1) Benches, *Two*(a) Position, *Above & below B.B.*(b) Persistence, *Thruout mine.*

See

- (2) Bedded impurities, kind, position in benches, persistence, ease of separation.

*Black sh. 6' exposed**Brownsh. fastained, well bedded.**Sand, 1 sh.**Black sh.**Coal*

See

- (3) Irregularities in continuity of bed (due to deposition, erosion, or movement,

*Flourclay**Limestone*See **X 1***4' = 1 Dir.**Soapstone lenses*(a) Effect on mining, *timbering*

See

Collector, *Wilson*Coal: Survey No. *6*Mine, *Logan*Co. *Franklin*Index No. *0735-92*

M.—UNDERGROUND SHEET (Geol.)

SECTION				
Ft.	in.	Name	<del>Color</del>	Sym.
		<i>Section exposed in 9' fall in T.M.W. off 1st N.E.</i>		
		<i>Black sh.</i>		
	<i>6'</i>	<i>Brownsh.</i>		
		<i>fastained, well bedded.</i>		
	<i>8'</i>	<i>Sand, 1 sh.</i>		
	<i>1'</i>	<i>Black sh.</i>		
	<i>8'</i>	<i>Coal</i>		
		<i>Flourclay</i>		
	<i>2'</i>	<i>Limestone</i>		
	<i>?</i>			



## K. (5) Physical character of coal in benches,

- (a) Relative hardness, *Harder at bottom than at top - top very soft.*
- (b) Lustre, *Bottom bright; top dull & glaucous*
- (c) Fracture, *conc. at bottom; blocky at top.*
- (d) Texture, *Laminated,* See
- (6) Impurities in coal, other than bedded,
- (a) Kind, *FeS<sub>2</sub>, CaCO<sub>3</sub>, veins, fracture fillings*
- (b) Position and persistence, *In top of seam*
- (c) Rejected, Ease of separation, See

L. Floor: (1) Material, *Floor Clay, l.s. beneath.*(2) Thickness, *24"*(3) Variation, *No information*

(4) Note character, condition, tendency to heave, relation to undercutting commercial value.

*Reptd. that it does not heave*

See

(5) Clay sample No.

Location,

## M. Stratigraphy,

(1) Fossiliferous horizons underground, *the light colored shale occurring over the coal in parts of the mine contains plant fragments*

Collection No. Location,

## N. Notes on effect of deep drilling in coal mine areas.

See

Collector, *Wilson*Coal: Survey No. 6 Mine, *Logan*Co. *Franklin*Index No. *0735.92*



(36713-500-1-20)

259693

INDEX

G The "soapstone" occurs in lenses from 5-10' thick and from 10-20-30' long. It is found just above the coal and the "bastard rock," a thin lime (Ave. "1"), is reptd. to be above it. This soapstone is full of slips and is very heavy and soft, so it is very dangerous and causes much timbering and other trouble in mining. It is found in patches thru-out the mine, but mostly in the E.

Collector *Wilson*

X- /

EXTRA NO. /

Index No.

*0735.92*

County

*Franklin*



INDEX

(36713-500-7-20)

259693

I Roof: Generally speaking the mine roof is a black slate from 6-18" thick. However, in parts of the mine the roof varies as follows.

Soapstone: This (See x1) occurs in lenses 5-10' thick and 10-20' long. It is soft, heavy, and full of slips, so it is hard to hold up. It is found mostly in the eastern part of the mine.

Bustard Rock: A very hard lime rock from 2" - thick. This is wavy or bumpy in appearance and, although it frequently breaks, exposing a grayish shale, is considered a substantial roof. Although found in patches thruout the mine it occurs mostly in the N.W.

Top Coal: In the rooms where the coal is thick enough about 12-14" of this top coal are left as roof. In the entries, however, it is taken down.

Collector Wilson

X- 12

EXTRA NO. 2

Index No.

0735-92

County

Franklin

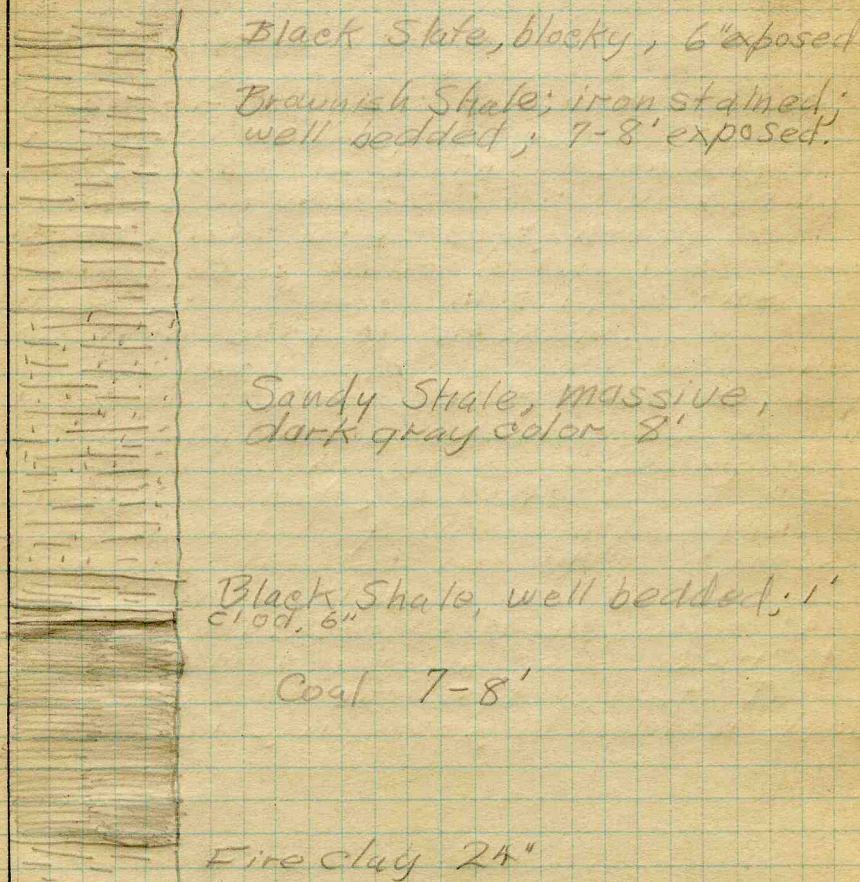




259693

INDEX

(36713-500-7-20)



Location 7th W. off Mt. N.E.  
See Yellow Cross on Blue Print.

Large fall exposes this section.

Collector Wilson  
X- 3

EXTRA NO. 3

Index No. 0735.92  
County Franklin



Operator, *Black Star Coal Co* Date *June 15, 1921*  
 Mine, *Logan* Sec. *35* T. *65* R. *3E*  
 Located, *In* miles from *Logan*  
 Location in mine, *Face Main East*

GRAPHIC SECTION		DESCRIPTION OF SECTION (AT POINT SAMPLED)		
In.	No.	No.	(Note character and thickness of roof)	Inches
			<i>Shale roof</i>	
<i>12</i>	<i>1</i>	<i>1</i>	<i>Coal (left as roof) App 12"</i>	
		<i>2</i>	<i>Coal (Pyrite lenses)</i>	<i>33</i>
		<i>3</i>	<i>Coal</i>	<i>13</i>
<i>33</i>	<i>2</i>	<i>4</i>	<i>Charcoal</i>	<i>3/8</i>
		<i>5</i>	<i>Coal</i>	<i>7 1/2</i>
		<i>6</i>	<i>Clay</i>	<i>1/4</i>
		<i>7</i>	<i>Coal</i>	<i>8</i>
		<i>8</i>	<i>B.B. (Clay &amp; Pyrite lenses)</i>	<i>1 1/4</i>
		<i>9</i>	<i>Coal</i>	<i>18</i>
<i>13</i>	<i>3</i>			
<i>3/8</i>	<i>7</i>			
<i>7 1/2</i>	<i>5</i>			
<i>4</i>	<i>6</i>		<i>Tape 82"</i>	
<i>8</i>	<i>7</i>			
<i>1 1/4</i>	<i>8</i>		(Note character and thickness of floor)	
<i>18</i>	<i>9</i>		Total thickness of coal.	
		Condition, <i>As mined</i>	Time, hr. min.	
		Wt. Gross, <i>25</i> lbs.	Net, lbs.	
		What Nos. shipped by Co.?		
		Excluded from sample: No. <i>1, 8</i>		
		Sample represents	in.	tons.
		Impurities? How do they occur?		

*scale 1 div = 4"*

Sample No. \_\_\_\_\_ Can No. *N-21-51* Lab. No. *12738*  
 Collector, *Netzaband* Coal: Survey No. *6*  
 Mine, *Logan* Co. *Franklin* Index No. *0735.92*  
 R.—COAL SAMPLE SHEET.



Operator, *Black Star Coal Co* Date *June 15, 1921*  
 Mine, *Logan* Sec. *35* T. *65* R. *3E*  
 Located, *In* miles from *Logan*  
 Location in mine, *Crosscut between 9<sup>th</sup> & 10<sup>th</sup> 5 off 1<sup>st</sup> W off 4<sup>th</sup> N.W*

GRAPHIC SECTION

DESCRIPTION OF SECTION (AT POINT SAMPLED)

In.	No.	No.	(Note character and thickness of roof)	Inches
			<i>Shale roof</i>	
<i>14</i>	<i>1</i>	<i>1</i>	<i>Coal (left as roof) App 14"</i>	<i>14 1/2</i>
		<i>2</i>	<i>Coal (FeS<sub>2</sub> stringers)</i>	<i>1/4</i>
		<i>3</i>	<i>Ch'coal</i>	<i>12</i>
		<i>4</i>	<i>Coal</i>	<i>3/8 - 1</i>
	<i>2</i>	<i>5</i>	<i>Ch'coal</i>	<i>20 1/2</i>
		<i>6</i>	<i>Coal FeS<sub>2</sub> stringers</i>	<i>1/4</i>
<i>4</i>	<i>3</i>	<i>7</i>	<i>Clay mixture</i>	<i>7</i>
<i>12</i>	<i>3</i>	<i>8</i>	<i>Coal</i>	<i>1/4</i>
	<i>4</i>	<i>9</i>	<i>Pyrite</i>	<i>6</i>
<i>3/8 - 1</i>		<i>10</i>	<i>Coal</i>	<i>3 1/4 - 1</i>
	<i>5</i>	<i>11</i>	<i>Ch'coal</i>	<i>5 1/2</i>
		<i>12</i>	<i>Coal</i>	<i>1 1/2 - 3</i>
<i>20 1/2</i>	<i>6</i>	<i>13</i>	<i>B.B. Sh. &amp; FeS<sub>2</sub> lenses</i>	<i>20</i>
		<i>14</i>	<i>Coal</i>	
	<i>7</i>			
<i>1/4</i>	<i>8</i>			
<i>7 1/4</i>	<i>9</i>		<i>Tape 86"</i>	
<i>3/4</i>	<i>10</i>			
<i>6</i>	<i>11</i>			
<i>3/4</i>	<i>12</i>			
<i>5 1/2</i>	<i>12</i>		(Note character and thickness of floor)	
<i>1 1/2 - 3</i>	<i>13</i>		Total thickness of coal.	
<i>20</i>	<i>14</i>		Condition, <i>As mined</i> Time, hr. min.	
			Wt. Gross, <i>25</i> lbs. Net, lbs.	
			What Nos. shipped by Co.?	
			Excluded from sample: No. <i>1, 13</i>	
			Sample represents in. tons.	
			Impurities? How do they occur?	

Sample No. \_\_\_\_\_ Can No. *N-21-52* Lab. No. *12739*

Collector, *Netzeband* Coal: Survey No. *6*

Mine, *Logan* Co. *Franklin* Index No. *0735-92*



Operator, *Black Star Coal Co* Date *June 15, 1921*  
 Mine, *Logan* Sec. *35 T. 6 S R. 13 E*  
 Located, *In* miles from *Logan*  
 Location in mine, *Room 10, panel 2, 8<sup>th</sup> Woff 1st NE*

GRAPHIC SECTION		DESCRIPTION OF SECTION (AT POINT SAMPLED)		
In.	No.	No.	(Note character and thickness of roof)	Inches
			<i>Shale roof</i>	
<i>12</i>	<i>1</i>	<i>1</i>	<i>Coal (left as roof) App 12"</i>	<i>11 1/2</i>
		<i>2</i>	<i>Coal</i>	<i>7 1/4</i>
		<i>3</i>	<i>Ch'coal</i>	<i>12</i>
<i>11 1/2</i>	<i>2</i>	<i>4</i>	<i>Coal (FeS<sub>2</sub> stringers)</i>	<i>12</i>
<i>7/4</i>	<i>3</i>	<i>5</i>	<i>Ch'coal</i>	<i>21</i>
		<i>6</i>	<i>Coal</i>	<i>1 1/4</i>
<i>12</i>	<i>4</i>	<i>7</i>	<i>Shale</i>	<i>17 1/2</i>
<i>1/2</i>	<i>5</i>	<i>8</i>	<i>Coal</i>	<i>3 1/4</i>
		<i>9</i>	<i>B.B. Shale</i>	<i>18</i>
<i>21</i>	<i>6</i>	<i>10</i>	<i>Coal</i>	
<i>1/4</i>	<i>7</i>		<i>Tape 80"</i>	
<i>17 1/2</i>	<i>8</i>			
<i>3/4</i>	<i>9</i>		(Note character and thickness of floor)	
			Total thickness of coal.	
<i>18</i>	<i>10</i>			
			Condition, <i>Ho mined</i>	Time, hr. min.
			Wt. Gross, <i>20 lbs.</i>	Net, lbs.
			What Nos. shipped by Co.?	
			Excluded from sample: No. <i>1, 9</i>	
			Sample represents	in. tons.
			Impurities? How do they occur?	

Sample No. \_\_\_\_\_ Can No. *N-21-53* Lab. No. *12740*  
 Collector, *Netzband* Coal: Survey No. *6*   
 Mine, *Logan* Co. *Franklin* Index No. *0735.92*  
 R.—COAL SAMPLE SHEET.