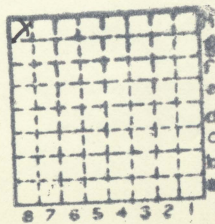




Form 180

STREATOR C C #1  
L-105



Sec# 10  
T. 31 N.  
R. 3 E.  
Index No.

✓  
Misc index 2576



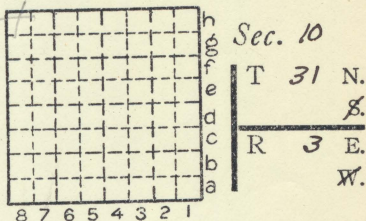
Location and Elevation Data

Location: Exact Approximate
(Approximate only if no trace of record of original exists)
Location by Dept. Mines & Minerals
Date 1940 Notebook No. Page
Looseleaf ref.
Map files No.

Description of Location

Position in sec., 1/4 sec., 40 acres

feet from North line
feet from East line
feet from South line
feet from West line



Other description: L-105
NW 1/4

Farm
No.
Company Streater Coal Co. #

1941, 1942

No. 1
County No.

Elevation ft.
By

Method: Level, transit, alidade, hand level

Elevation of
Height of point above ground
Date Notebook P.
Looseleaf ref.

Map files No.

Description of item: (drill hole, mine, etc.) Shaft Mine
63' to 76" of #6 coal

County LaSalle Quadrangle Index No.