

FIELD NOTES

Illinois State Geological Survey

See maps

(2822.2b)

July 21, 1932.

Shallow strip mining works 200 yards NE of mine dump 3/4 mile SE of New York Central crossing at Kangley.

Slope in #5 coal from strip pit.

Drift--with blocks of fissile shale on lower 1'. 7'

Coal--largely dull, thin yellow clay partings. 6"

Breaks in fine fragments. 1"

Clay--yellow brown to gray, soft. 1"

Coal--bright and dull about even, hard, irregular fracture, few thin clay partings near top. exposed #4? 1' 7"

(Deep shaft supposedly in 3rd vein (#2) coal.)

4b NW corner.

Sandstone--gray, thick-bedded, micaceous at break of terrace near bottom of ravine.

Single ledge, small, limonite specks numerous. 6"

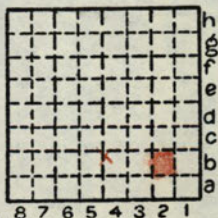
Section along north side of road ditch.

Till. 3'±

Shale--dark gray, stained brown, weathers white, micaceous, some purplish splotches.

exposed 6'

Covered. 10'



By B. R. Millington Date 1932

Quadrangle Streator

County LaSalle Sec. 22 T. 31N R. 3E

FIELD NOTES
Illinois State Geological Survey

pg. 4
(2822.5a)

Cut banks along creek in SE/4, SW/4 of the section.

Sandstone--thin to medium-bedded, gray,
fine-grained, micaceous, weathers gray. 12'

Sandstone or sandy shale--thin-bedded, gray
to brown, weathers brownish. exposed 2''

1b August 30, 1932.

Petrotti Coal Mine adjacent to Spring Hill Mine,
East of Kangley, by Streator Brick Company.

Coal #7 ? #6 *Heaven #6 Rd 2/11/82*

Slate--black. *ASK* 2'

Shale--dark, slaty. *BILL* 7'

Sandstone. 2''

Clay. 2''

Coal. *Spring Lake Coal Rd Jacobson* 1' 8''

Fine clay. 5'

Fine clay--sandy. 4'

4c August 19, 1933.

Coal mine SE of Kangley.

Sand--silty, calcareous, fine-grained, light
yellow. 15'

Shale--bluish, sandy, perhaps equivalent
to siltstone found at Streator. 35'

Coal. 5' 8 1/2''

Soapstone (underclay)

Section obtained from miner orally. No gravel.

By L. C. Robinson Date 1933-32

Quadrangle Streator

County LaSalle Sec. 22 T. 31N R. 3E

