



Form 180

*Location checked in field 7-23-59 by K.E. Clegg
R.L. Berger*

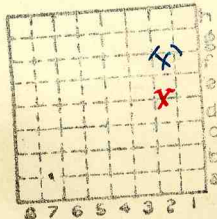
see map symbol for correct location

Tebauger. Bios

G. No. 6

index 2951

L 10



Sec. 14

T. 18 N.

R. 8 W.

Index No.

4-4



Mine ~~operated~~ operated by: (1) Tebrugge Bros.

Date 1936 L-10

Original name or number:
Illinois Coal Report 1936 p.

LATER OPERATORS

Date Operator Name or No.

- 2
- 3
- 4
- 5
- 6
- 7
- 8
- 9
- 10
- 11
- 12
- 13
- 14

* Also owners #See ownership sheet

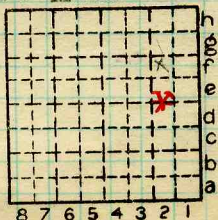
Railroad, Wagon, Idle, Abandoned Shaft Mine

IDENTIFICATION L-10

County No. 6 Coal No. 5

Quad. Petersburg Part

County Menard



Sec. 14
18 N.
T. ■
R. 8 W.
Index No.
05N14

COAL MINE OPERATOR LOCAL MINE

