

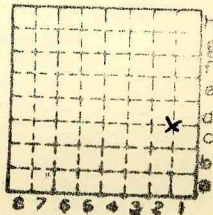
2407



Form 180

L-25?

CHAS. J. BROOKER CC



Sec. 8

| | | | |
|----|----|----|----|
| T. | 32 | N. | 8 |
| R. | 2 | E. | W. |

Index No. ?

✓ mine index 2654



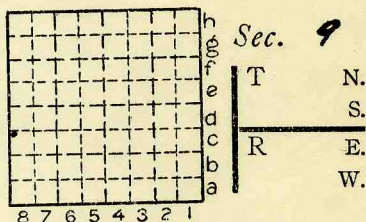
Location and Elevation Data

Location: Exact Approximate
 (Approximate only if no trace of record of original exists)
 Location by Dept. Mines & Minerals
 Date 1940 Notebook No. Page
 Looseleaf ref.
 Map files No.

Description of Location

Position in sec., 1/4 sec., 40 acres

..... feet from North line
 feet from East line
 feet from South line
 feet from West line



Other description: L-25
Reopened 1940
Sunk 1931
Prod 30 T

Farm.....
 No.....
 Company T.K. Brooker
 No.....
 County No.....

Elevation.....ft.

By.....

Method: Level, transit, alidade, hand level

Elevation of.....

Height of point above ground.....

Date..... Notebook..... P.....

Looseleaf ref.....

Map files No.....

Description of item: (drill hole, mine, etc.) Drift Mine

County La Salle Quadrangle Index No.



272

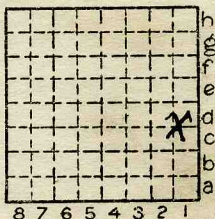
Location and Elevation Data

Location: Exact Approximate ✓
 (Approximate only if no trace of record of original exists)
 Location by... **Dept Mines & Minerals**
 Date..... Notebook No..... Page.....
 Looseleaf ref.....
 Map files No.....

Description of Location

Position in sec., 1/4 sec., 40 acres

.....feet from North line
feet from East line
feet from South line
feet from West line



Sec. 8

| | |
|----|----|
| T | N. |
| S. | |
| R | E. |
| | W. |

Other description:.....
 Farm.....
 No.....
 Company... **Chas J. Brooker**
 Coal Company
 No.....
 County No.....

Active 37
L-

Elevation.....ft.

By.....

Method: Level, transit, alidade, hand level

Elevation of.....

Height of point above ground.....

Date..... Notebook..... P.....

Looseleaf ref.....

Map files No.....

Description of item: (drill hole, mine, etc.).....

LOCAL MINE

County Quadrangle Index No.

28294-5M-5-5-37

La Salle