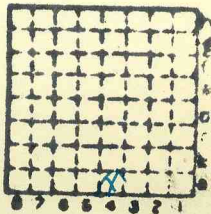


ISGS mine # 2763

Spiller & Lewis CC.

489



Sec. 6
 T. 9 N.
 S.
 R. 3 E.
 Index No.

✓



Mine originally operated by: (1) **Spiller & Lewis Coal Co.**
 Date _____

Original name or number:
 Illinois Coal Report _____ p. _____

LATER OPERATORS

Date	Operator	Name or No.
2		
3		
4		
5		
6		
7		
8		
9		
10		
11		
12		
13		
14		

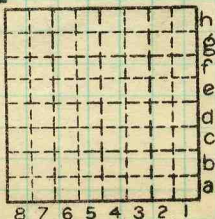
* Also owners #See ownership sheet

Railroad, Wagon, Idle, Abandoned **Strip**

LOCAL MINE

IDENTIFICATION

County No. **489** Coal No. **6**
 Quad. **W. Frankfort** Part
 County **Williamson**



Sec. **6**

T. **9** S.
 R. **3** E.
 W.

Index No.
0706 a4

COAL MINE OPERATOR



LOCATION AND ELEVATION

Location: side R. R. side R. R. side Highway No.

on top. map Location sheet

Elevation: Method, 1. Est. () ft. 2. Inst. (kind) ft.

By Data sheet

DEPTH

Authority To coal ft. Authority Rail to rail ft. Top of coal above rail. (Est. Rule) ft. To coal ft.

ALTITUDE OF TOP OF COAL

By estimated data By instrumental data 490 ft.

Thickness

Max. in. Min. in. Aver. 78 in.

GEOLOGICAL DATA

Mine notes, date Coop No. Pyr. inv. Coal Ash inv.

CHEMICAL DATA

Analyses Face U. I. B. M. Others Car U. I. B. M. Others Org. Sulf U. I. B. M. Others Ash fusion U. I. B. M. Others Ash anal. U. I. B. M. Others U. I. B. M. Others

Classification

Misc. tests: Coking. Cleaning Boiler

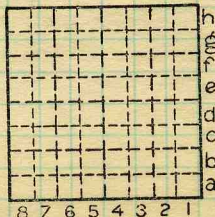
Published descriptions:—

Railroad, Wagon, Idle, Abandoned

IDENTIFICATION

County No. 489 Quad. W. Frankfort County Williamson

Coal No. 6 Part



Sec. 6

T. 9 S. R. 3 E. W.

Index No. 0706 a4

COAL MINE LOCATION AND DATA

Operator, *Spiller & Lewis*
 Mine, *Local Pit*
 Located, *2 N* miles from *Marion*
 Location in mine, *at only working*

Date *July 26, 1921*
 Sec. *6* T. *9 S* R. *3 E*

GRAPHIC SECTION DESCRIPTION OF SECTION (AT POINT SAMPLED)

In.	No.	No. (Note character and thickness of roof)	Inches
		<i>Yellow Clay 15'</i>	
	<i>1.</i>	<i>Coal</i>	<i>10 1/2"</i>
	<i>2.</i>	<i>Pyrite</i>	<i>1/8"</i>
	<i>3.</i>	<i>Coal</i>	<i>4 1/2"</i>
	<i>4.</i>	<i>Shale</i>	<i>1/8"</i>
	<i>5.</i>	<i>Coal</i>	<i>17 1/2"</i>
	<i>6.</i>	<i>Pyrite</i>	<i>1/4"</i>
	<i>7.</i>	<i>Coal</i>	<i>2 3/4"</i>
	<i>8.</i>	<i>Shale (Fl)</i>	<i>1/8"</i>
	<i>9.</i>	<i>Coal</i>	<i>1 1/2"</i>
	<i>10.</i>	<i>Blue band</i>	<i>1 1/2"</i>
	<i>11.</i>	<i>Coal</i>	<i>4 1/2"</i>
	<i>12.</i>	<i>Charcoal parting</i>	<i>1/8"</i>
	<i>13.</i>	<i>Coal</i>	<i>1 1/2"</i>
		<i>Floor Clay</i>	<i>78 3/4"</i>
		(Note character and thickness of floor)	
		Total thickness of coal.	

Condition, *Wet at bottom* Time, hr. *45* min.
Dry at top
 Wt. Gross, *38* lbs. Net, *7* lbs.
 What Nos. shipped by Co.?

Excluded from sample: No. *8 1/2 shale 1 1/2 Blue band*
 Sample represents *76 3/4* in. tons.
 Impurities? How do they occur?

Sample No. *W-21-71* Can No. *18045* Lab. No. *?*

Collector, *Wilson* Coal: Survey No. *6*
 Mine, *Spiller & Lewis* Co. *Williamson* Index No. *0706*
 R.—COAL SAMPLE SHEET.

Wmson

0707-69

Spiller pit here (different from other Spiller pit) shows an overburden of max 20 feet - mostly clay but locally with slate and weathered ls.
Coal ended to the SW and probably gone on the east by Pleistocene erosion.

Other pits to the N - sec. 6, show similar condition - max cover 26 feet.

Wmson 0707-69