



258

FORM 180

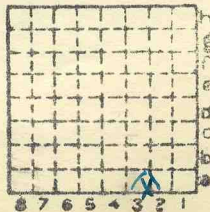
R - F

SPRINGFIELD

O'Gawa #11

Mi. #126

557



Sec. 20

T.	8	N.
R.	7	S.
		E.
		W.

Index No.

✓ Mine Index



Town, ~~Harrisburg~~ Eldorado

Local Authority,
Eugene Miller, Mine Mgr.

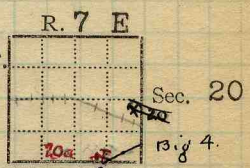
Level: Auth., DeW; field map

Method, H.L.?

Surface alt., 387 ft.
Depth to coal, 398 ft.
Alt. top coal, -11 ft.
Thickness: Av. in.
Max. in., Min. in.

R. R., ~~Big 4~~ CCC + St. L.
9C

1370' 6" E
90' - S of T.



Location: authority, DeW; O' Gara map

(Show R.R.) #
Minell
Mine Name or No.

Operator

1907 O' Gara Coal Co No. 11
332 So. Michigan Ave, Chicago.

Successor to

Date

Succeeded by

Date

Succeeded by

Date

557

Q ✓

PRODUCTION.

					Fiscal	U. S. No.
1915					Idle	
1927	-	0	-			
				1200 T. ball		

7 1/2

Geol. Notes? no

Coop. No.

Coal secs.? no.

Analyses No. 12937-8-9; ~~358~~ 358

COUNTY

Examined by Nelzeband

Rehouse 12 f

Coal bed name: Local SHIPPING MINE

Survey No. 5

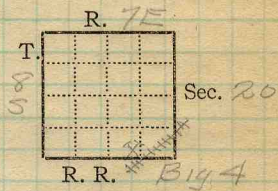
County Saline on

Index No. 0620a70

K.—ACTIVE SHIPPING OR LOCAL COAL MINE.

val 5 y (1924)

Mine Name or No., *No. 11*
7 1/2 mile from *Eldorado*
Operator, 19*21* *O'Gara Coal Co*
Operator, 191



Entrance, *Shaft* Elev., *387.06* ft. above, *sea level*
Depth to ~~bottom~~ coal, *391.45* ft. Alt. *- 4.39*

SURFACE DATA.

A. Topography, *Flat, slightly rolling* See
B. Surficial materials. (1) Character, *Till*

(2) Thickness, *No information* (3) Effect on mining and shaft-sinking, of former drainage lines, underground water strata, etc. *No information.*

#557

C. Outcrops, (1) Character, See
(2) Structure, See
(3) Fossil horizons, See
Collection No.,
(4) Evidences of subsidence, See
D. Note collection of mine maps, drill records and shaft logs.

See drill record sheet,

E. Notes on surrounding area,

ABANDONED

See

Coal bed name: Local, Survey No. *5*
Collector, *Netzaband*
Mine, *O'Gara # 11* Co. *Saline* Index No. *0620.70*
L.—SURFACE SHEET (Geol.)



K. (5) Physical character of coal in benches,

(a) Relative hardness, *Same as rest of Saline Co*

(b) Lustre, *Bright & glance in layers (1/16 to 1/2") bright predom.*

(c) Fracture, *Blocky Cleat not well developed*

(d) Texture, *Laminated* See

(6) Impurities in coal, other than bedded,

(a) Kind, *Pyrites lenses (1/16 to 1") calcite or gypsum fracture*

(b) Position and persistence, *Middle and upper coal* } fillings

throughout mine

(c) Rejected, *Large pyrite lenses* Ease of separation, See

L. Floor: (1) Material, *Floor clay ls. beneath.*

(2) Thickness, *No information*

(3) Variation,

(4) Note character, condition, tendency to heave, relation to undercutting commercial value.

Upper 1" a black shale, hard & brittle, rest a hard, grey shale containing many black fragments of plant remains; no great tendency to heave; undercut upon; value unknown.

See

(5) Clay sample No. Location,

M. Stratigraphy,

(1) Fossiliferous horizons underground, *Roof shale & floor clay contains fragments of plant remains.*

Collection No. Location,

N. Notes on effect of deep drilling in coal mine areas.

See

Collector, *Natzband*
Mine, *O'Gara #11* Co. *Saline*
N.—UNDERGROUND SHEET (Geol.)

Coal: Survey No. *5*
Index No. *0620.70*



INDEX

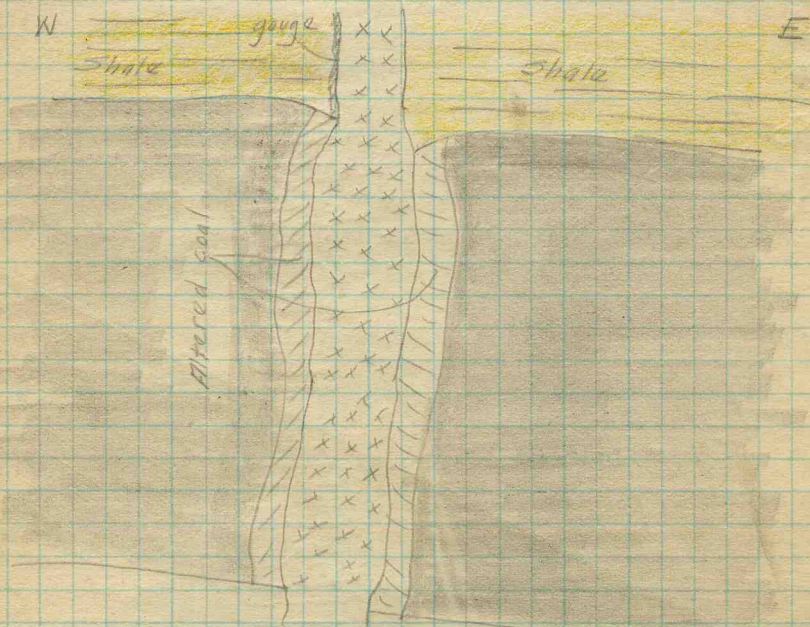
(36713-500-7-20)

K₃

Fault 4000' from bottom in straight south.
Trend 3.50W Dip 55°S. South down thrown
side. Displacement 21' from bottom of top coal
to top of bottom coal. Gauge filled with
hard pebbles. Top coal dragged into gauge
Coal not affected within 1" of fault.

K₃

Dike 7000' from bottom in 15°W off Main S.
8" wide in shale 14-15" wide in coal
Coal altered within several inches of dike.



Collector

Netzeband

Index No.

0620.70

X-1

EXTRA NO. 1

County

Saline



INDEX

(36713-500-7-20)

K₃

The coal is very hilly, grades of ground 40% being very common. The steep grades make haulage difficult and dangerous. Five drivers have been killed in this mine on account of the steep grades. The hills slope in all directions and are found in all parts of mine.

A large fault is encountered in the east

Collector Natzeband

Index No. 0620.70

X- 2

EXTRA NO. 2 County

Saline

Operator, *O'Gara Coal Co.*

Date *July 14, 1921*

Mine, *No. 11*

Sec. 20 T. 8S R. 7E

Located, at miles from *Eldorado*

Location in mine, *Face of 3rd E off the Straight South*

GRAPHIC SECTION		DESCRIPTION OF SECTION (AT POINT SAMPLED)		
In.	No.	No.	(Note character and thickness of roof)	Inches
<i>12 1/2</i>	<i>1</i>	<i>1</i>	<i>Shale Roof</i> <i>Coal</i>	<i>12 1/2</i>
<i>1</i>	<i>2</i>	<i>2</i>	<i>Pyrite lens</i>	<i>1</i>
		<i>3</i>	<i>Coal</i>	<i>2 1/2</i>
		<i>4</i>	<i>Charcoal</i>	<i>1/2</i>
<i>2 1/2</i>	<i>3</i>	<i>5</i>	<i>Coal</i>	<i>2 1/2</i>
		<i>6</i>		<i>Total 66</i>
<i>3/8</i>	<i>4</i>		<i>Tape 65</i>	
<i>2 1/2</i>	<i>5</i>			
			(Note character and thickness of floor)	
			Total thickness of coal.	
		Condition, <i>As Mined</i>	Time, hr. min.	
		Wt. Gross, <i>25</i> lbs.	Net, lbs.	
		What Nos. shipped by Co.?		
		Excluded from sample: No. <i>2</i>		
		Sample represents <i>64</i> in. tons.		
		Impurities? How do they occur?		

Sample No. *C* Can No. *N-2157* Lab. No. *12937*

Collector, *Wilson* Coal: Survey No. *5*

Mine, *O'Gara #11* Co. *Saline* Index No. *062070*

Operator, *O'Gara Coal Co*
 Mine, *No 11*
 Located, *at* miles from *Eldorado*
 Location in mine, *Face of 7th S off the 2nd W off the Main S*

Date *July 14, 1921*
 Sec. *20* T. *85* R. *7E*

GRAPHIC SECTION		DESCRIPTION OF SECTION (AT POINT SAMPLED)		
In.	No.	No.	(Note character and thickness of roof)	Inches
<i>8 1/2</i>	<i>1</i>		<i>Shale Roof</i>	
<i>1</i>	<i>2</i>	<i>1</i>	<i>Coal</i>	<i>3 1/2</i>
		<i>2</i>	<i>Pyrite</i>	<i>1</i>
		<i>3</i>	<i>Coal</i>	<i>24 1/8</i>
<i>24</i>	<i>3</i>	<i>4</i>	<i>Charcoal</i>	<i>38</i>
			<i>Coal</i>	
<i>1/2</i>	<i>4</i>		<i>Tape 71"</i>	<i>72</i>
<i>38</i>	<i>5</i>			
(Note character and thickness of floor)				
Total thickness of coal.				
Condition, <i>As Mined</i>		Time,	hr.	min.
Wt. Gross, <i>25</i> lbs.		Net,	lbs.	
What Nos. shipped by Co.?				
Excluded from sample: No. <i>2</i>				
Sample represents <i>70</i> in. tons.				
Impurities? How do they occur?				

Sample No. _____ Can No. *W-21-58* Lab. No. *12938*
 Collector, *Wilson* Coal: Survey No. *5*
 Mine, *O'Gara #11* Co. *Saline* Index No. *062070*
 R.—COAL SAMPLE SHEET.



Operator, *O'Gara Coal Co.* Date *July 17, 1921*
 Mine, *No 11* Sec. *20* T. *8S* R. *7E*
 Located, *at* miles from *Eldorado*
 Location in mine, *Face of the 7th N. off the Main U.*

GRAPHIC SECTION		DESCRIPTION OF SECTION (AT POINT SAMPLED)		
In.	No.	No.	(Note character and thickness of roof)	Inches
32	1		<i>Shale Roof</i>	
			<i>1' Gog yrite</i>	<i>32 1/2</i>
			<i>3' Coal</i>	<i>33</i>
			<i>4</i>	<i>65 1/2</i>
<i>1/2</i>	<i>2</i>		<i>Tap 65</i>	
33	3			
(Note character and thickness of floor)				
Total thickness of coal.				
Condition, <i>As Mined</i>		Time,	hr.	min.
Wt. Gross, <i>25</i> lbs.		Net,	lbs.	
What Nos. shipped by Co.?				
Excluded from sample: No. <i>2</i>				
Sample represents <i>64 1/2</i> in. tons.				
Impurities? How do they occur?				

Sample No. _____ Can No. *W-21-59* Lab. No. *12939*
 Collector, *Wilson* Coal: Survey No. *5*
 Mine, *O'Gara #11* Co. *Saline* Index No. *0620.70*
 R.—COAL SAMPLE SHEET.