



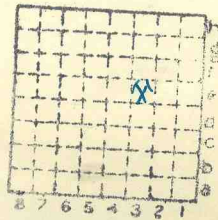
Form 180

R F

HERRIN

United Elec. # 13

S-18 288



Sec. 35

T. 2 N. S.

R. 7 E. W.

Index No.

Mine Index



Mine originally operated by: (1)

Date

SOLAR COAL CO.

1925

Original name or number:

Illinois Coal Report

p.

MORGAN

LATER OPERATORS

Date

Operator

Name or No.

2 1927. UNITED ELECTRIC COAL CO. "RED RAY" No. 13

3

4

5

6

7

8

9

10

11

12

13

14

1,000' S 600' W of NE corner NE SW (1948)

1946

PK

* Also owners

See ownership sheet

Railroad, Wagon, Idle, Abandoned, Strip

TYPE

I.C.R.R.

1935

IDENTIFICATION

County No. 288

Coal No.

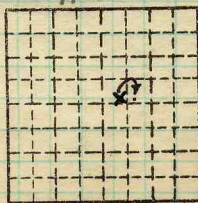
6

Part 5

Quad. New Athens

(1948) 7' 1"

County ST CLAIR



Sec. 5

T. 2 N. S.

R. 7 W.

Index No.

COAL MINE OPERATOR



(Sheets) COAL PRODUCTION (Sheet)

No.	Period						Tons	
	Mo.	Day	Year	Mo.	Day	Year		
	1	1	34	12	31	34	318	
	1	1	35	12	31	35		
18	1	1	1936	12	31	1936	237	150
18	1	1	1937	12	31	1937	235	715
S-18	1	1	1938	12	31	1938	231	155
						1939	230	508
						1940	174	606
S-18	1	1	1941	12	31	1940	253	380
S-18	1	1	1942	12	31	1942	327	240
						1943	225	248
						1944	273	564
						1945	185	442
						1946	190	227
						1947	235	842
						1948	112	620
						1949	11	170

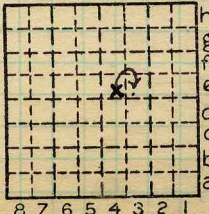
Idle #23

SUMMARIES

No.	to	No.	Tons
1925	-	1933	2,067,213

Railroad, Wagon, Idle, Abandoned . Strip.

I. C. IDENTIFICATION
 S-18
 County No. 288 Coal No. 6
 Quad. New Athens Part 5
 County ST CLAIR



Sec. 5
 T. 2 S.
 R. 7 W.
 Index No.

COAL MINE—PRODUCTION



(Sheets) COAL PRODUCTION (Sheet 1)

Period						Tons	
Mo.	Day	Year	Mo.	Day	Year		
7	1	1925	12	31	1925	>	74 508
1	1	1926	12	31	1926	>	155 937
1	1	1927	12	31	1927	>	50 525
1	1	1928	12	31	1928	>	403 357
1	1	1929	12	31	1929	>	422 821
1	1	1930	12	31	1930	>	275 320
						1	382 468
1	1	1931	12	31	1931	>	368 904
1	1	1932	12	31	1932	>	247 531
1	1	1933	12	31	1933	>	68 310
1	1	1934	12	31	1934	>	318
1	1	1935	12	31	1935	>	(0)
1	1	1936	12	31	1936	>	237 150
1	1	1937	12	31	1937	>	235 715
1	1	1938	12	31	1938	>	231 155
1	1	1939	12	31	1939	>	230 508
1	1	1940	12	31	1940	>	174 606
						1	794 197

United Electric Coal #13
Solar Coal Co

SUMMARIES

No.	to	No.			
1925 (7-1)		1930 (12-31)		1	382 468
1931 (1-1)		1940 (12-31)		1	794 197
7-1-1925	to	12-31-1940		3	176 665

Railroad, Wagon, Strip, Idle, Abandoned

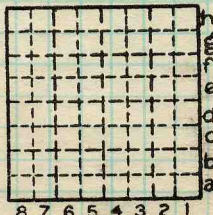
IDENTIFICATION

County No. _____ Coal No. _____

Coal Report No. _____

Quad.

County **St Clair**



Sec.

T. N.
S.
R. E.
W.
Index No.

COAL MINE—PRODUCTION

ILLINOIS GEOLOGICAL SURVEY, URBANA





(Sheets) COAL PRODUCTION (Sheet 2)

Period						Tons	
Mo.	Day	Year	Mo.	Day	Year		
1	1	1941	12	31	1941	253	380
United Electric Solar #13							

SUMMARIES

No.	to	No.		
7-1-1925	to	12 31 1940	3	176 665

Railroad, Wagon, Strip, Idle, Abandoned

Sec.

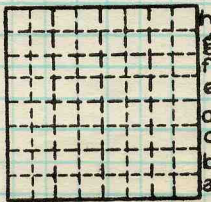
IDENTIFICATION

County No. _____ Coal No. _____

Coal Report No. S-18

Quad.

County St Clair



T. N.
S.
E.
R. W.
Index No.

COAL MINE—PRODUCTION
ILLINOIS GEOLOGICAL SURVEY, URBANA



LOCATION AND ELEVATION

Location: **E** side **I.C. (on spur - 1/2 mi)** R. R.
 side R. R.
 side Highway No.

on top of map Location sheet **13-87-76c**

Elevation: Method, 1. Est. () _____ ft.
 2. Inst. (kind **Plane table**) **428.9** ft.

By **W. B. Roe 9-25-30** Data sheet

DEPTH

Authority **W. B. Roe** To coal **4** ft.
 Authority Rail to rail _____ ft.
 Top of coal above rail. (Est. Rule) _____ ft.
 To coal **35 ±** ft.

ALTITUDE OF TOP OF COAL

By estimated data _____
 By instrumental data **424.9** ft.

Thickness

Max. in. Min. in. Aver. **70** in.

GEOLOGICAL DATA

Mine notes, date _____

Coop No. Pyr. inv. Coal Ash inv.

CHEMICAL DATA

Analyses Face	U. I.	B. M.	Others
Car	U. I.	B. M.	Others
Org. Sulf	U. I.	B. M.	Others
Ash fusion	U. I.	B. M.	Others
Ash anal.	U. I.	B. M.	Others
	U. I.	B. M.	Others

Classification

Misc. tests: Coking. Cleaning Boiler

Published descriptions:— **1000' S } NE cor. NE SW. 1939**
600' W }

Railroad, Wagon, Idle, Abandoned

Strip Mine

IDENTIFICATION

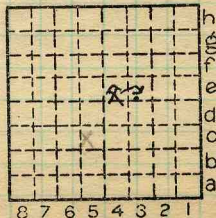
County No. **288**

Coal No. **6**

Quad. **New Athens**

Part **5**

County **St. Clair**



Sec. **5**

T. **2** S.
 R. **7** W.

Index No.

1508-3e

COAL MINE LOCATION AND DATA



UNITED ELEC RED IRAY MINE

SEE Field Notes New ATHENS PART 5

Date..... T..... R.....

Quad. NEW ATHENS Part.....

County..... Index No.

1505. E3

